

## **PRODUCT CHANGE NOTIFICATION**

PCN Number: 661

Date of Issue:	05/23/2023
PCN Effective Date:	05/23/2023
Last Time Buy Date:	-
Last Time Ship Date:	-
Type of Change:	Eng. dwg update for HMC & HMS series
Title of Change:	Retainer ring, sub-component change.
Description and Reason for Change:	Sub-component change. Retainer Ring: from RNG_461(round) to RTN_714 (winged).

Mario Davila

Product Manager:                     **M. Davila**

AFFECTED PART NUMBER(S)				
Manufacturer Part Number (MPN)	Description	Discontinued per PCN	Suggested Alternative Part Number(s)	Description of the Alternative Number
HMC_461_ATP	PLC Lens 10mm 0.562" Round Fresnel Amber	NO	-	-
HMC_461_BTP	PLC Lens 10mm 0.562" Round Fresnel Blue	NO	-	-
HMC_461_CTP	PLC Lens 10mm 0.562" Round Fresnel Clear	NO	-	-
HMC_461_GLO	10MM THREADED LENS ASSEM./GLO	NO	-	-
HMC_461_GTP	PLC Lens 10mm 0.562" Round Fresnel Green	NO	-	-
HMC_461_RTP	PLC Lens 10mm 0.562" Round Fresnel Red	NO	-	-
HMC_461_YTP	PLC Lens 10mm 0.562" RND Fresnel Yellow	NO	-	-

HMS_462_ATP	PLC Lens 10mm .562" RND Fresnel Amber WT	<b>NO</b>	-	-
HMS_462_BTP	PLC Lens 10mm .562" RND Fresnel Blue WT	<b>NO</b>	-	-
HMS_462_CTP	PLC Lens 10mm .562" RND Fresnel Clear WT	<b>NO</b>	-	-
HMS_462_GTP	PLC Lens 10mm .562" RND Fresnel Green WT	<b>NO</b>	-	-
HMS_462_RTP	PLC Lens 10mm .562" RND Fresnel Red WT	<b>NO</b>	-	-
HMS_462_YTP	PLC Lens 10mm .562" Fresnel Yellow WT	<b>NO</b>	-	-

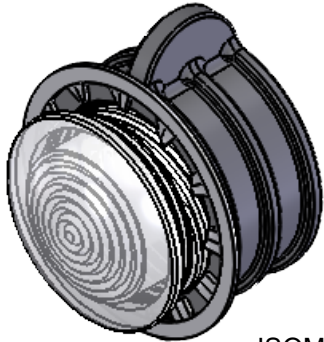


[RNG-461]



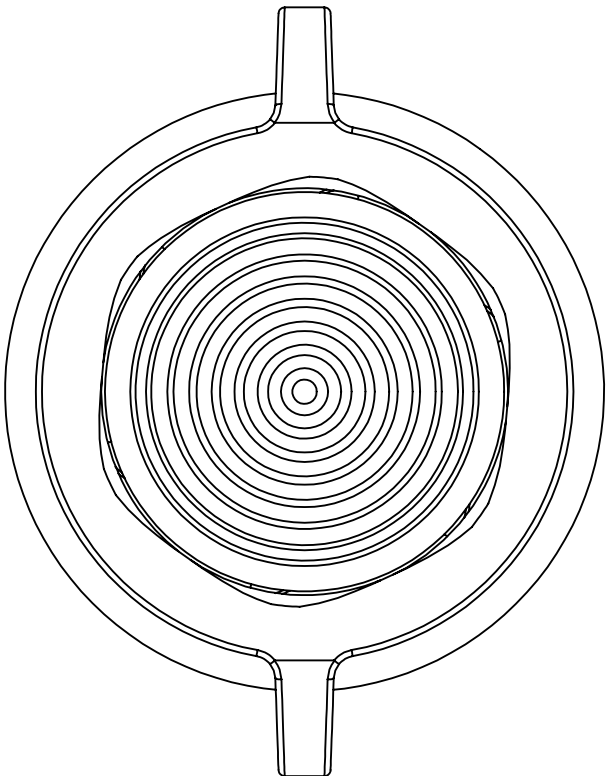
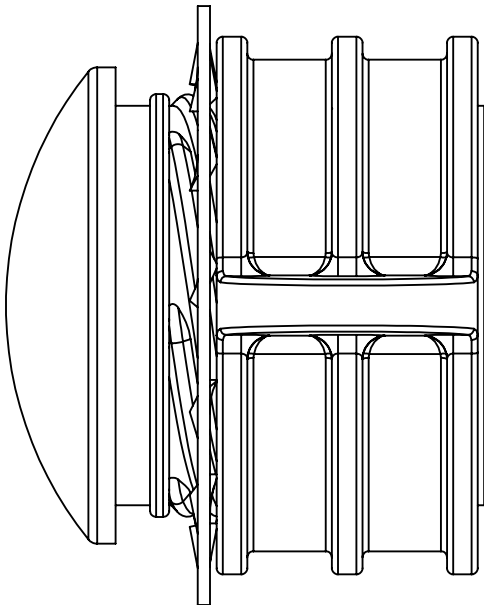
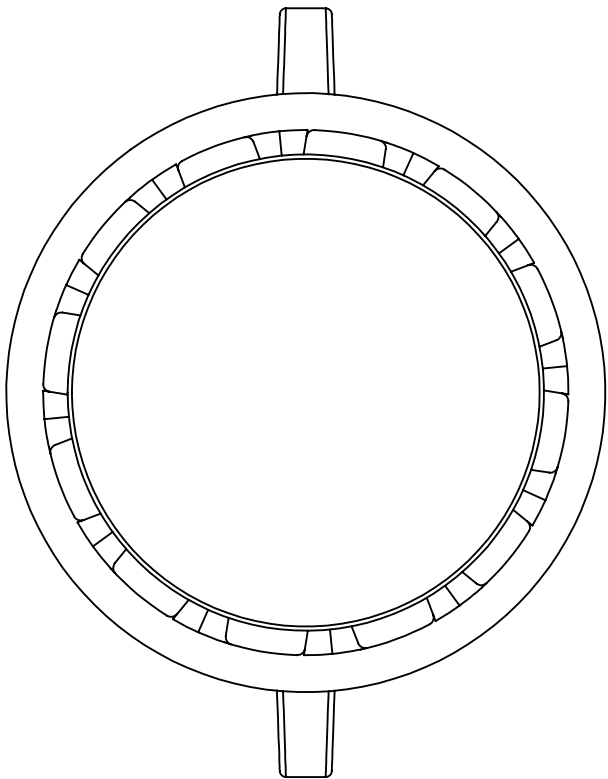
[RTN-714]

- NOTES:
1. MOUNTING: MOUNTS IN A  $\phi .562 \pm .002$  [ $\phi 16.56\text{mm} \pm .05$ ] PANEL HOLE ON  $.750$  [ $19.05\text{mm}$ ] CENTERS. PANEL THICKNESS  $.031$  [ $.8\text{mm}$ ] TO  $.187$  [ $4.75\text{mm}$ ]. PANEL HOLE SHOULD BE DEBURRED, BUT NOT CHAMFERED.
  2. ASSEMBLY: INSERT LENS THROUGH PANEL HOLE, SLIDE LOCK WASHER ONTO LENS BARREL AND TWIST ON RETAINING RING. PCB MOUNTED LED'S SLIDE INTO LENS WHEN THE PANEL COVER IS CLOSED OR THE PCB CARD IS INSERTED INTO THE CASE.
  3. MATERIAL: LENS-POLYCARBONATE, UL 94-V2  
LOCK WASHER- FH STEEL, NICKEL PLATE  
RETAINING RING - THERMOPLASTIC, U.L. 94 V0 RATED
  4. PARTS PACKAGED SEPERATELY
  5. U.S. & FOREIGN PAT. ISSUED & PEND.



ISOMETRIC VIEW  
ONLY FOR REF.

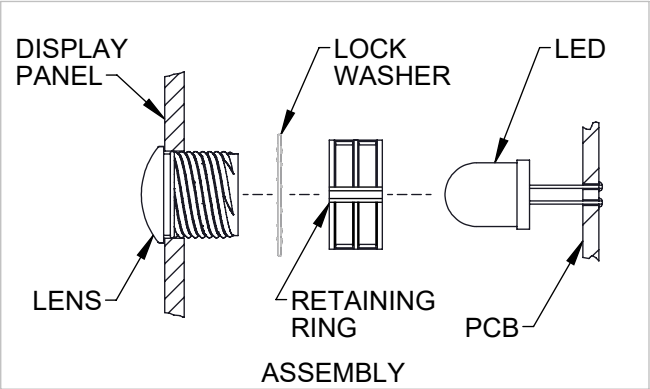
REVISIONS				
ECN#	REV.	DESCRIPTION	DATE	INITIALS
	001	REVISED PER ECR111009AZ01	7/7/10	KH
2148	002	RETAINING RING PART NUMBER UPDATED	TBD	AS



ORDERING CODE : **HMC 461 XXX**

MODEL

LENS COLOR	
RTP	RED TRANSPARENT
ATP	AMBER TRANSPARENT
GTP	GREEN TRANSPARENT
BTP	BLUE TRANSPARENT
YTP	YELLOW TRANSPARENT
CTP	CLEAR TRANSPARENT



UNLESS OTHERWISE SPECIFIED  
DIMENSIONS ARE IN INCHES:

ANGLES DECIMALS  
 $\pm 1^\circ$  .X  $\pm .020$   
.XX  $\pm .010$   
FINISH .XXX  $\pm .005$

BREAK ALL CORNERS AND SHARP  
EDGES .030 MAX



THIRD ANGLE PROJECTION

PROPRIETARY AND CONFIDENTIAL  
THE INFORMATION CONTAINED IN THIS  
DRAWING IS THE SOLE PROPERTY OF  
VISUAL COMMUNICATIONS COMPANY, INC. ANY  
REPRODUCTION IN PART OR AS A WHOLE  
WITHOUT THE WRITTEN PERMISSION OF  
VISUAL COMMUNICATIONS COMPANY, INC. IS  
PROHIBITED.

MATERIAL

SEE NOTES

FINISH

SEE NOTES

APPROVAL

DATE

DRAWN:

K.Howard

7/7/10

CHECKED:

DPZ

7/7/10

DO NOT SCALE DRAWING

**VISUAL COMMUNICATIONS COMPANY, INC.**

190 Bosstick Boulevard, Suite101 San Marcos, CA 92069 USA  
Phone (760) 560-1300 Fax (760) 560-1301 email vccsales@vcclite.com

TITLE:  
CLIPLITE HMC 461  
ASSEMBLY

SIZE

DWG. NO.

**B**

HMC 461 XXX\_E

REV

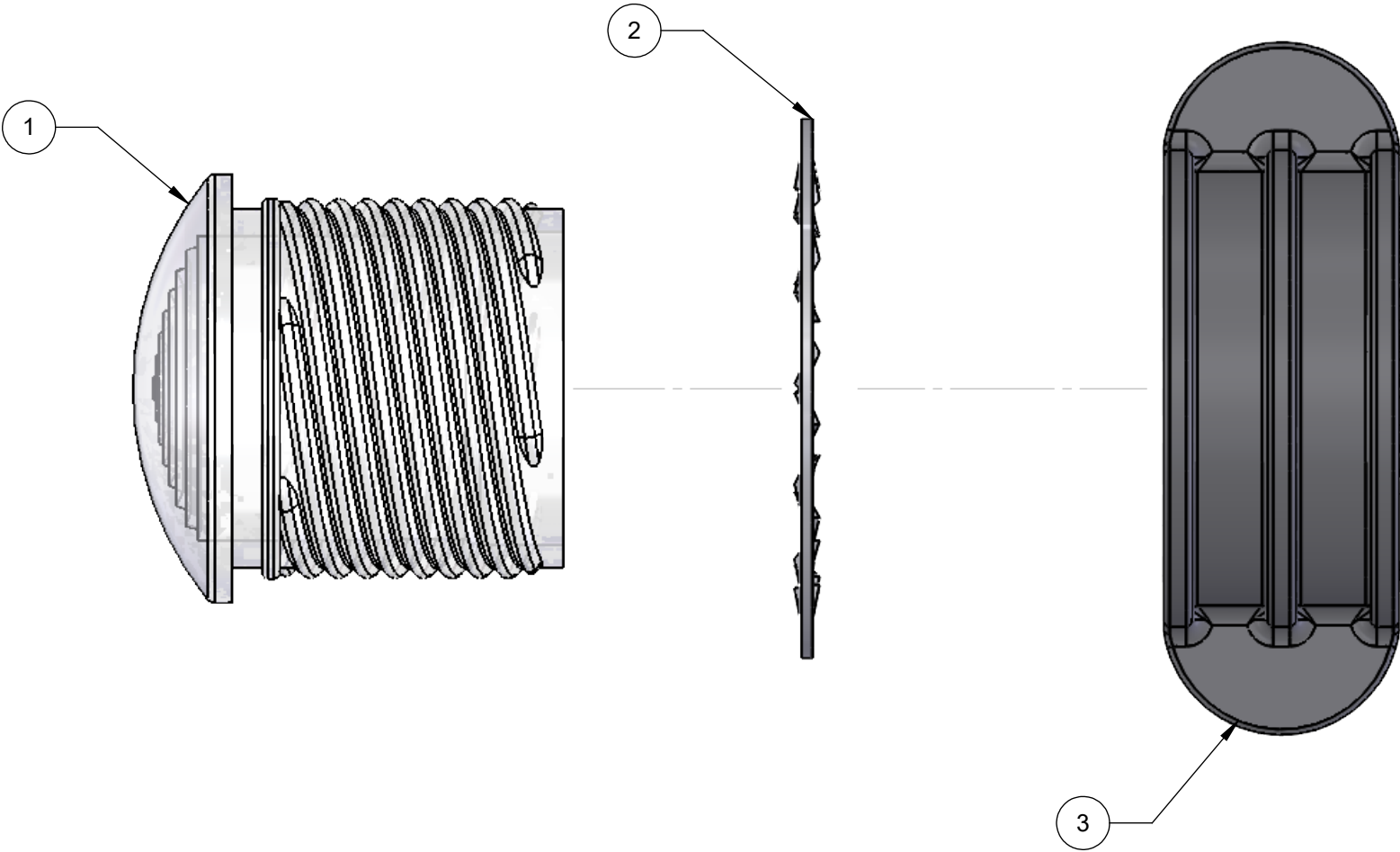
002

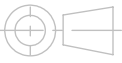
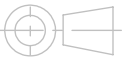
SCALE: 4:1

SHEET 1 OF 4

ITEM NO.	PART NUMBER	DESCRIPTION	QTY.
1	461 XXX	10MM STANDARD THREADED FRESNEL LENS	1
2	HLW 461	10mm LOCKWASHER	1
3	RTN_714	NUT, RETAINING 14MM	1

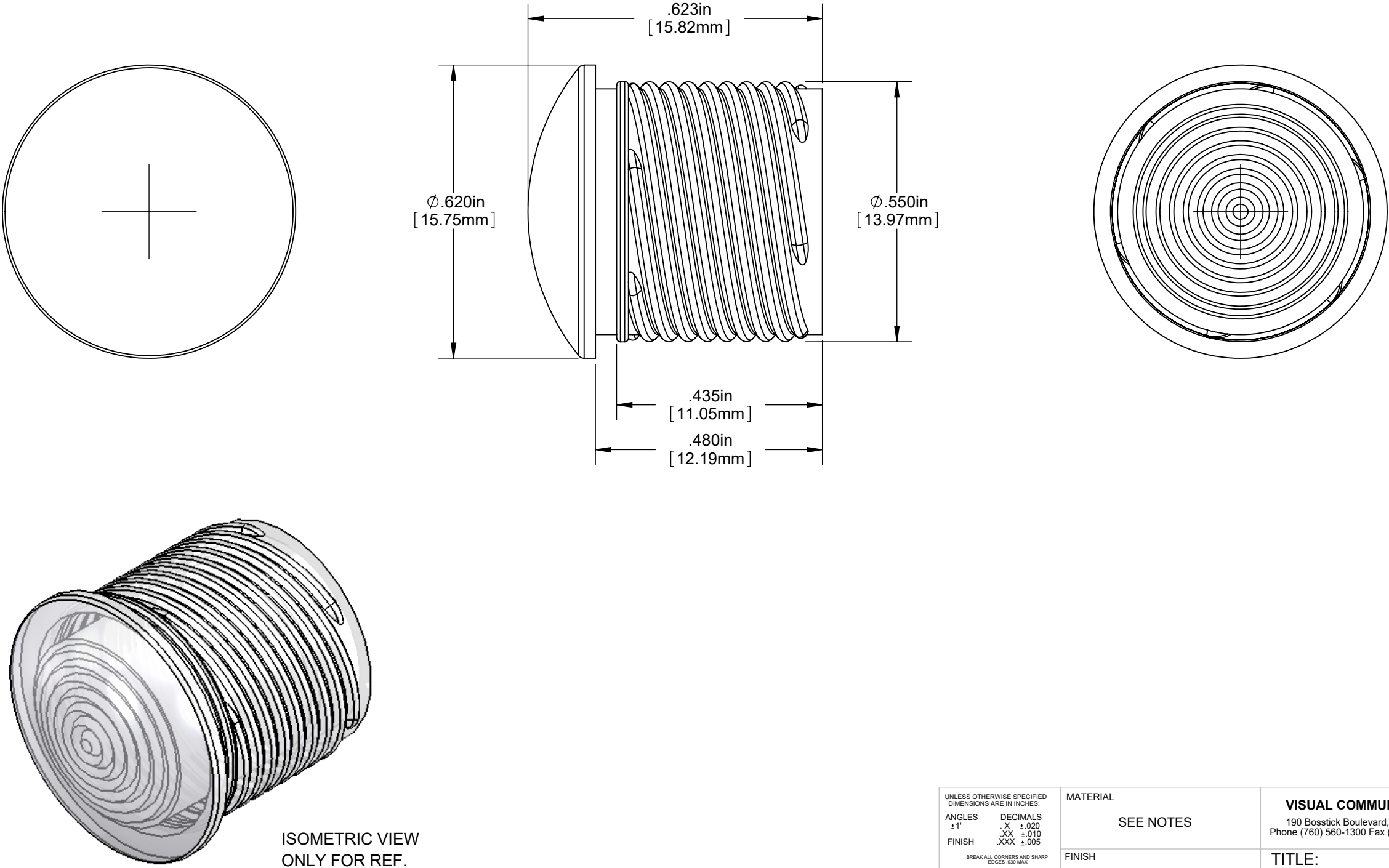
REVISIONS				
ECN #	REV	DESCRIPTION	DATE	INITIALS
		SEE SHEET 1		




UNLESS OTHERWISE SPECIFIED DIMENSIONS ARE IN INCHES:  ANGLES        DECIMALS ±1"            .X    ±.020 .XX   ±.010 FINISH        .XXX ±.005  BREAK ALL CORNERS AND SHARP EDGES .030 MAX   <b>THIRD ANGLE PROJECTION</b>  <small>PROPRIETARY AND CONFIDENTIAL THE INFORMATION CONTAINED IN THIS DRAWING IS THE SOLE PROPERTY OF VISUAL COMMUNICATIONS COMPANY, INC. ANY REPRODUCTION IN PART OR AS A WHOLE WITHOUT THE WRITTEN PERMISSION OF VISUAL COMMUNICATIONS COMPANY, INC. IS PROHIBITED.</small>		MATERIAL  SEE NOTES		VISUAL COMMUNICATIONS COMPANY, INC. 190 Bosstick Boulevard, Suite101 San Marcos, CA 92069 USA Phone (760) 560-1300 Fax (760) 560-1301 email vccsales@vcclite.com		
		FINISH  SEE NOTES		TITLE:  CLIPLITE HMC 461 ASSEMBLY		
		APPROVAL		DATE		SIZE
		DRAWN        K.Howard		7/7/10		
		CHECKED        DPZ		7/7/10		
		DO NOT SCALE DRAWING		SCALE: 4:1		DWG. NO.  HMC 461 XXX_E
SHEET 2 OF 4						

NOTES:  
USE FOR REFERENCE ONLY

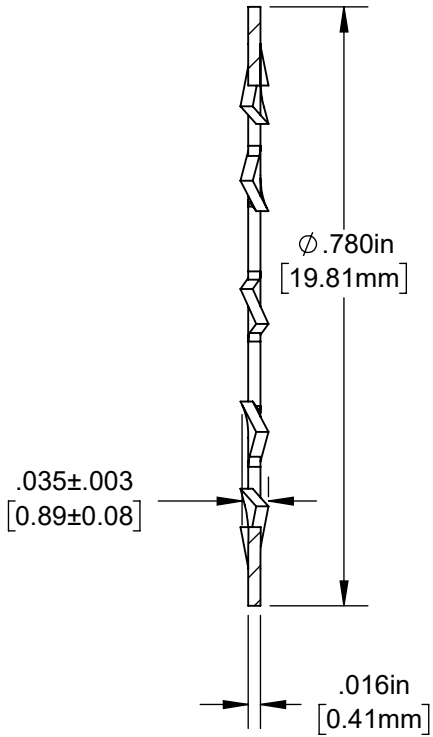
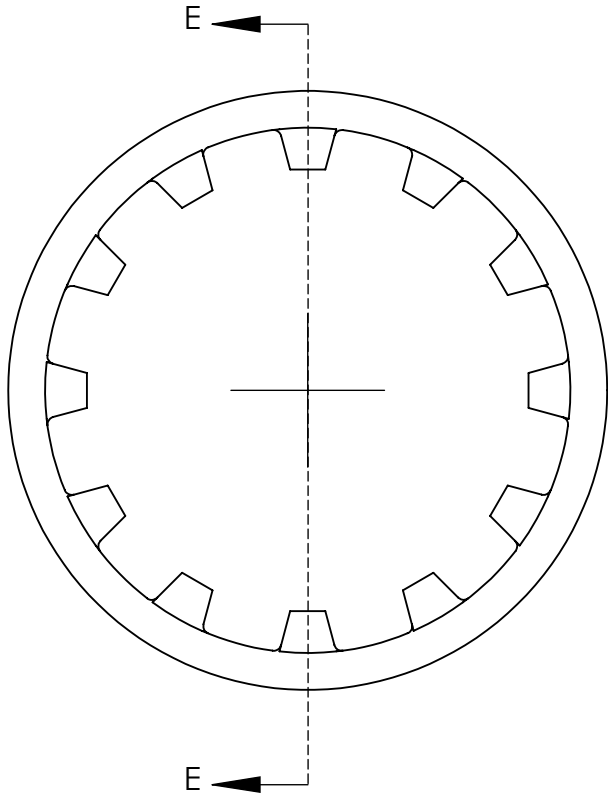
REVISIONS				
ECN #	REV	DESCRIPTION	DATE	INITIALS
		SEE NOTES		



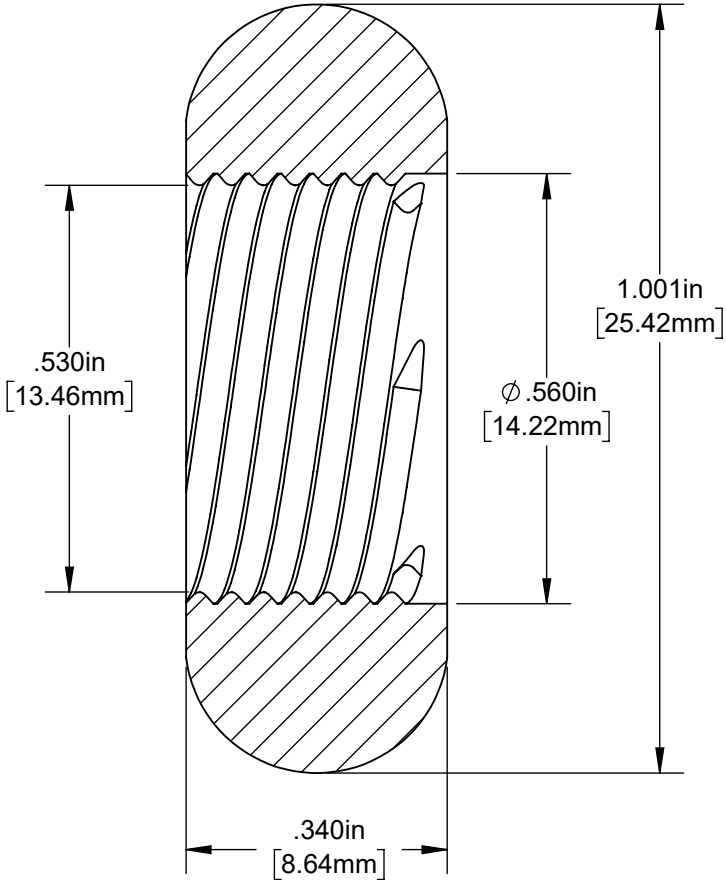
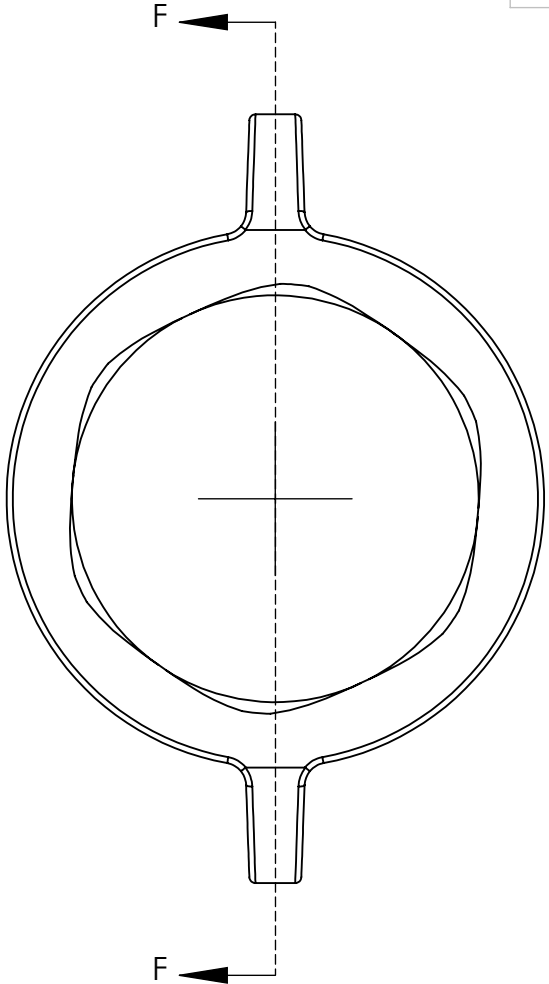
UNLESS OTHERWISE SPECIFIED DIMENSIONS ARE IN INCHES:  ANGLES    DECIMALS ±1'        .X    ±.020 .XX   ±.010 FINISH    .XXX ±.005  BREAK ALL CORNERS AND SHARP EDGES .030 MAX   <b>THIRD ANGLE PROJECTION</b>  <small>PROPRIETARY AND CONFIDENTIAL THE INFORMATION CONTAINED IN THIS DRAWING IS THE SOLE PROPERTY OF VISUAL COMMUNICATIONS COMPANY, INC. ANY REPRODUCTION IN PART OR AS A WHOLE WITHOUT THE WRITTEN PERMISSION OF VISUAL COMMUNICATIONS COMPANY, INC. IS PROHIBITED.</small>		MATERIAL  SEE NOTES		VISUAL COMMUNICATIONS COMPANY, INC. 190 Bosstick Boulevard, Suite101 San Marcos, CA 92069 USA Phone (760) 560-1300 Fax (760) 560-1301 email vccsales@vcclite.com	
		FINISH  SEE NOTES		TITLE: 10MM ROUND STANDARD THREADED FRESNEL LENS	
APPROVAL		DATE		SIZE	DWG. NO.
DRAWN    K.Howard		7/7/10		<b>B</b>	HMC 461 XXX_E
CHECKED    DPZ		7/7/10		REV	002
DO NOT SCALE DRAWING		SCALE: 4:1		SHEET 3 OF 4	

NOTES:  
USE FOR REFERENCE ONLY

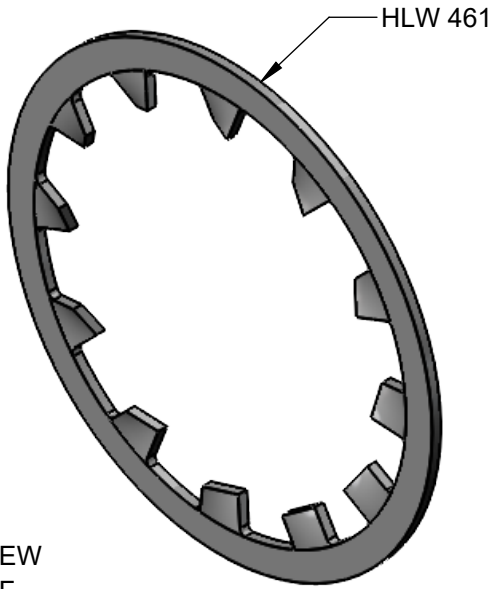
REVISIONS				
ECN #	REV	DESCRIPTION	DATE	INITIALS
		SEE NOTES		



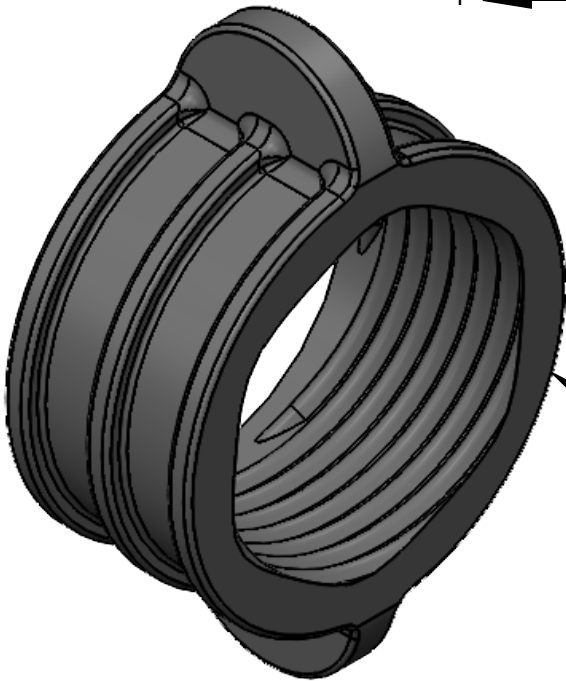
SECTION E-E



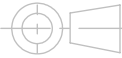
SECTION F-F



ISOMETRIC VIEW  
ONLY FOR REF.



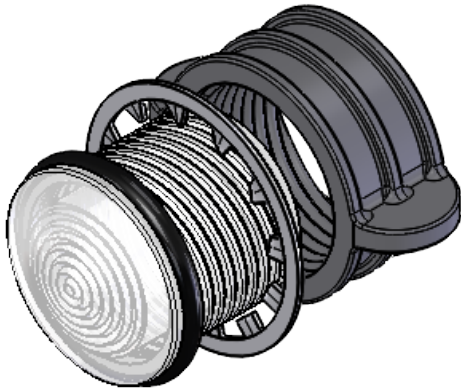
ISOMETRIC VIEW  
ONLY FOR REF.

UNLESS OTHERWISE SPECIFIED DIMENSIONS ARE IN INCHES:	
ANGLES ±1°	DECIMALS .X ±.020 .XX ±.010 .XXX ±.005
FINISH BREAK ALL CORNERS AND SHARP EDGES .030 MAX	
	
THIRD ANGLE PROJECTION	
PROPRIETARY AND CONFIDENTIAL THE INFORMATION CONTAINED IN THIS DRAWING IS THE SOLE PROPERTY OF VISUAL COMMUNICATIONS COMPANY, INC. ANY REPRODUCTION IN PART OR AS A WHOLE WITHOUT THE WRITTEN PERMISSION OF VISUAL COMMUNICATIONS COMPANY, INC. IS PROHIBITED.	

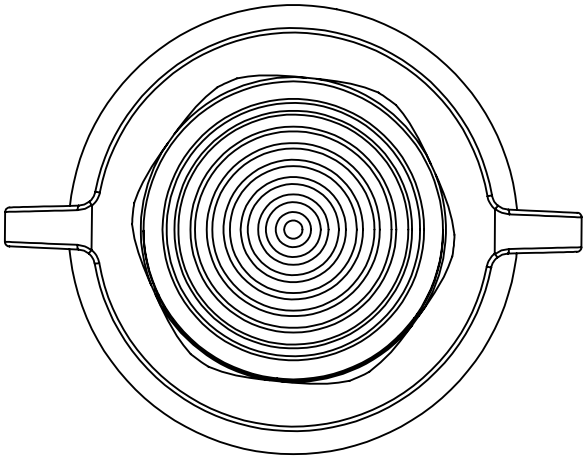
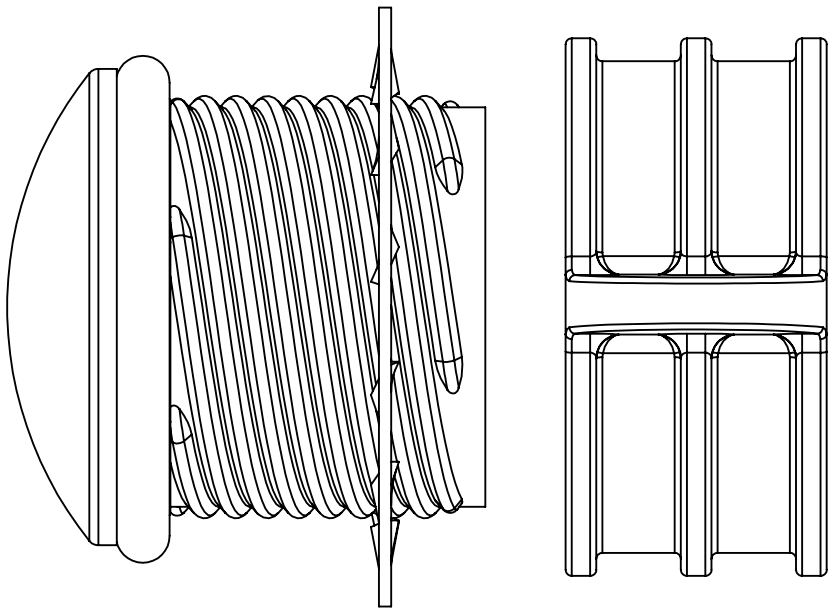
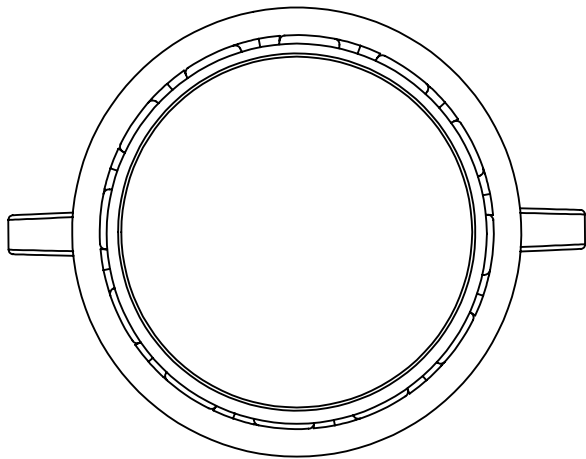
MATERIAL			VISUAL COMMUNICATIONS COMPANY, INC. 190 Bosstick Boulevard, Suite101 San Marcos, CA 92069 USA Phone (760) 560-1300 Fax (760) 560-1301 email vccsales@vcclite.com		
SEE NOTES					
FINISH			TITLE: 10mm LOCKWASHER W/ RETAINING RING NUT		
SEE NOTES					
APPROVAL		DATE	SIZE    DWG. NO.    REV <b>B</b> HMC 461 XXX_E    002		
DRAWN	K.Howard	7/7/10			
CHECKED	DPZ	7/7/10			
DO NOT SCALE DRAWING			SCALE: 4:1		SHEET 4 OF 4



- NOTES:
1. MOUNTING: MOUNTS IN A  $\varnothing .562 \pm .002$  [ $\varnothing 16.56\text{mm} \pm .05$ ] PANEL HOLE ON  $.750$  [ $19.05\text{mm}$ ] CENTERS. PANEL THICKNESS  $.031$  [ $.8\text{mm}$ ] TO  $.187$  [ $4.75\text{mm}$ ]. PANEL HOLE SHOULD BE DEBURRED, BUT NOT CHAMFERED.
  2. ASSEMBLY: INSERT LENS THROUGH PANEL HOLE, SLIDE LOCK WASHER ONTO LENS BARREL AND TWIST ON RETAINING RING. PCB MOUNTED LEDS SLIDE INTO LENS WHEN THE PANEL COVER IS CLOSED OR THE PCB CARD IS INSERTED INTO THE CASE.
  3. MATERIAL: LENS-POLYCARBONATE, UL 94-V2  
LOCK WASHER- FH STEEL, NICKEL PLATE  
RETAINING RING - THERMOPLASTIC, U.L. 94 V0 RATED  
SEAL- EPDM
  4. SOME PARTS PACKAGED SEPERATELY
  5. U.S. & FOREIGN PAT. ISSUED & PEND.



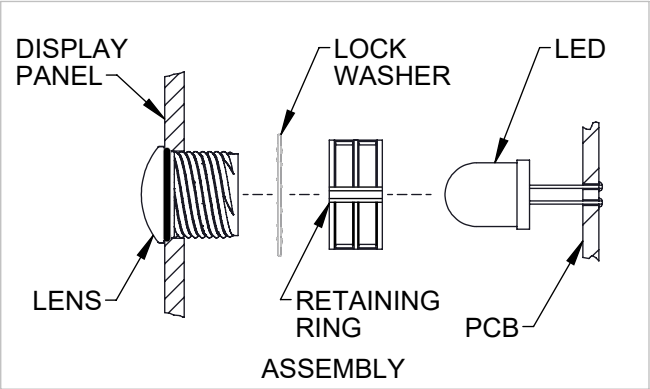
ISOMETRIC VIEW  
ONLY FOR REF.




ORDERING CODE : **HMS 462 XXX**

MODEL

LENS COLOR	
RTP	RED TRANSPARENT
ATP	AMBER TRANSPARENT
GTP	GREEN TRANSPARENT
BTP	BLUE TRANSPARENT
YTP	YELLOW TRANSPARENT
CTP	CLEAR TRANSPARENT



REVISIONS				
ECN#	REV.	DESCRIPTION	DATE	INITIALS
	001	REVISED PER ECR111009AZ01	7/7/10	KH
2148	002	RETAINING RING PART NUMBER UPDATED	TBD	AS

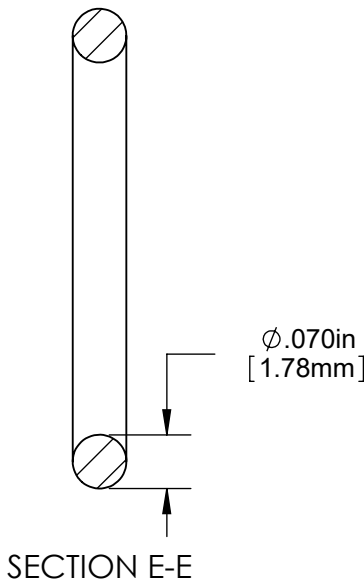
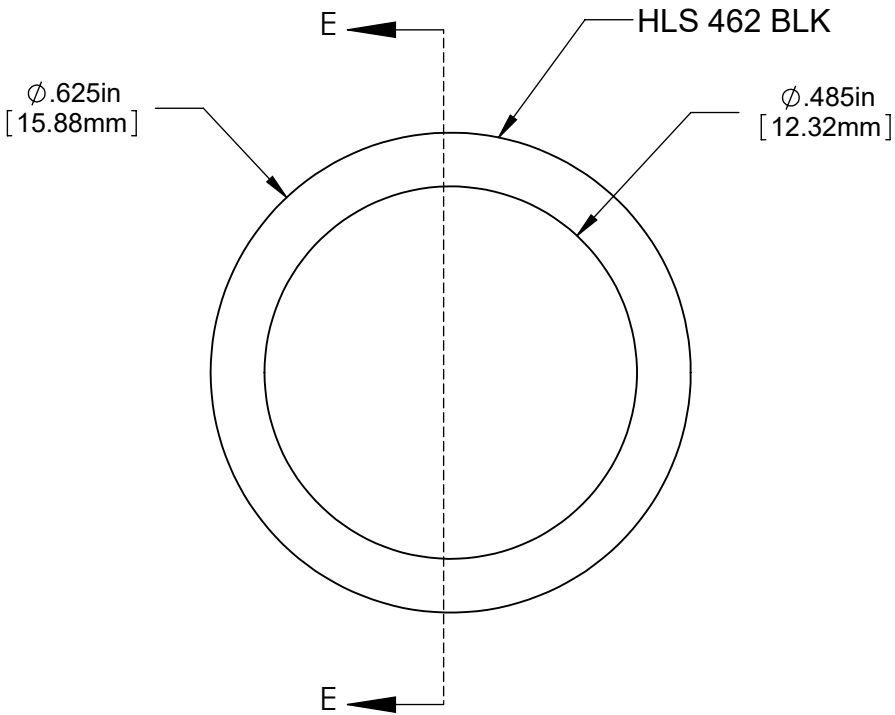
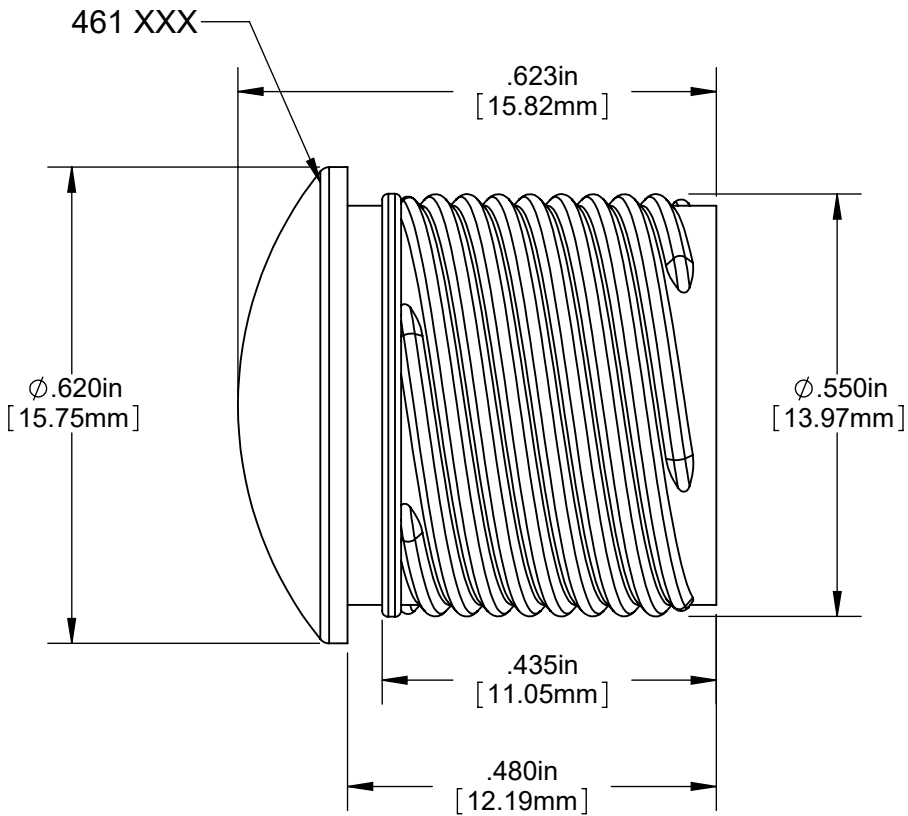
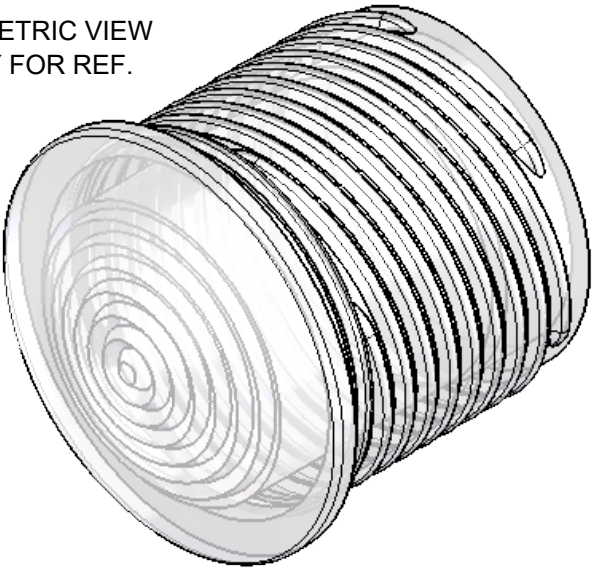
DIMENSION STYLE: INCHES / MM GENERAL TOLERANCES UNLESS OTHERWISE SPECIFIED		MATERIAL		<div>VCCG OPTOELECTRONICS</div> <div>190 BOSSTICK BLVD, SUITE 101 SAN MARCOS, CA 92069 U.S.A PHONE: (760) 560-1300, FAX: (760) 560-1301 EMAIL: vccsales@vcclite.com</div>		
		SEE NOTES				
	INCHES	MM				
X	± .020	± .508				
XX	± .010	± .254				
XXX	± .005	± .127				
ANGLE ± 1° BREAK ALL CORNERS AND SHARP EDGES .030 MAX				FINISH		
				SEE NOTES		
THIRD ANGLE PROJECTION PROPRIETARY AND CONFIDENTIAL THE INFORMATION CONTAINED IN THIS DRAWING IS THE SOLE PROPERTY OF VISUAL COMMUNICATIONS COMPANY, INC. ANY REPRODUCTION IN PART OR AS A WHOLE WITHOUT THE WRITTEN PERMISSION OF VISUAL COMMUNICATIONS COMPANY, INC IS PROHIBITED.				APPROVAL	DATE	
				DRAWN: K.Howard	7/7/10	
				CHECKED: DPZ	7/7/10	
DO NOT SCALE DRAWING				TITLE: CLIPLITE HMS 462 ASSEMBLY		
				SIZE	DWG. NO.	REV
				B	HMS 462 XXX_E	002
				SCALE: 4:1		SHEET 1 OF 4






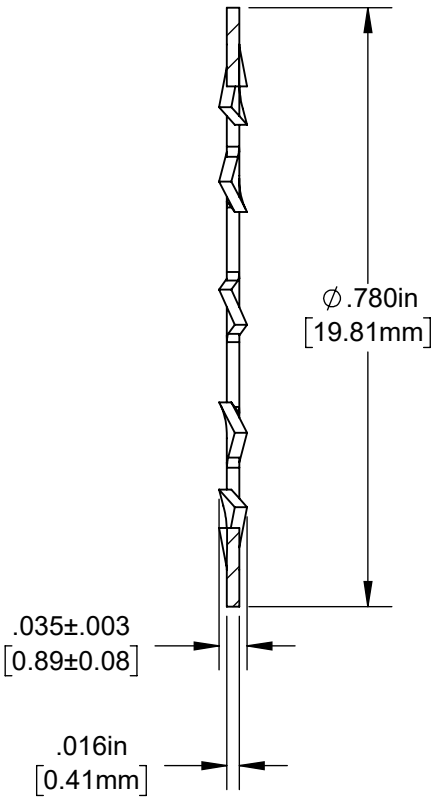
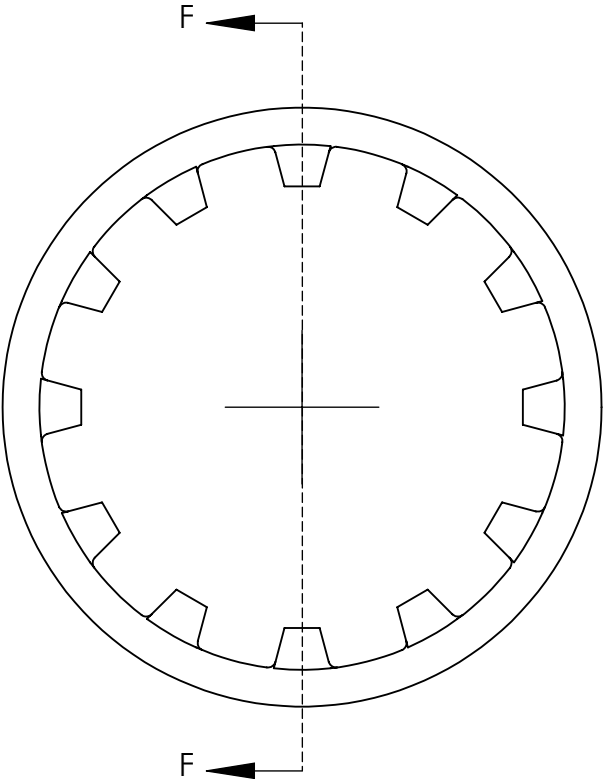
NOTES:  
USE FOR REFERENCE ONLY

ISOMETRIC VIEW  
ONLY FOR REF.

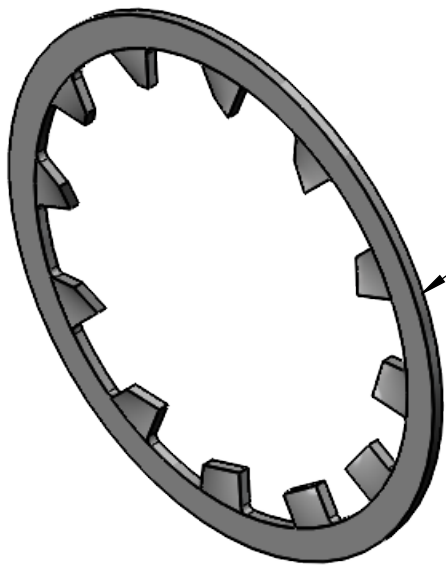


DIMENSION STYLE: INCHES / MM GENERAL TOLERANCES UNLESS OTHERWISE SPECIFIED			MATERIAL		<div>VCC OPTOELECTRONICS</div> <div>190 BOSSTICK BLVD, SUITE 101 SAN MARCOS, CA 92069 U.S.A PHONE: (760) 560-1300, FAX: (760) 560-1301 EMAIL: vccsales@vcclite.com</div>														
			SEE NOTES																
			FINISH																
<table><tr><td></td><td>INCHES</td><td>MM</td></tr><tr><td>.X</td><td>± .020</td><td>± .508</td></tr><tr><td>.XX</td><td>± .010</td><td>± .254</td></tr><tr><td>.XXX</td><td>± .005</td><td>± .127</td></tr></table> <div>ANGLE ± 1° BREAK ALL CORNERS AND SHARP EDGES .030 MAX</div>				INCHES	MM	.X	± .020	± .508	.XX	± .010	± .254	.XXX	± .005	± .127	SEE NOTES		<div>TITLE:</div> <div>10MM STANDARD THREADED FRESNEL LENS W/SEAL</div>		
	INCHES	MM																	
.X	± .020	± .508																	
.XX	± .010	± .254																	
.XXX	± .005	± .127																	
<div></div> <div>THIRD ANGLE PROJECTION</div>																			
PROPRIETARY AND CONFIDENTIAL THE INFORMATION CONTAINED IN THIS DRAWING IS THE SOLE PROPERTY OF VISUAL COMMUNICATIONS COMPANY, INC. ANY REPRODUCTION IN PART OR AS A WHOLE WITHOUT THE WRITTEN PERMISSION OF VISUAL COMMUNICATIONS COMPANY, INC IS PROHIBITED.			APPROVAL		DATE														
			DRAWN K.Howard		7/7/10														
			CHECKED DPZ		7/7/10														
			DO NOT SCALE DRAWING																
					SIZE B		DWG. NO. HMS 462 XXX_E		REV 002										
					SCALE: 4:1				SHEET 3 OF 4										

NOTES:  
USE FOR REFERENCE ONLY

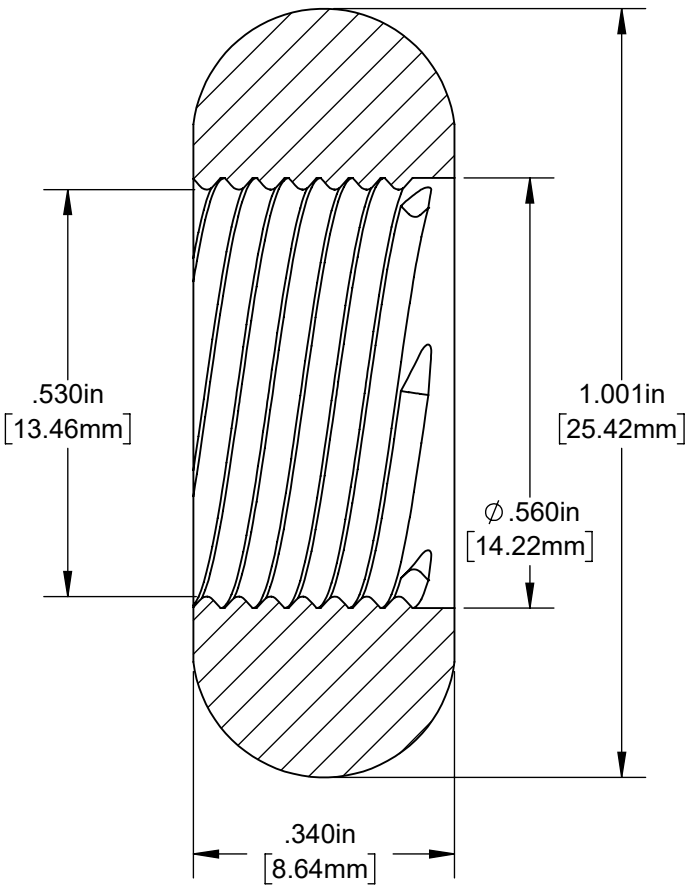
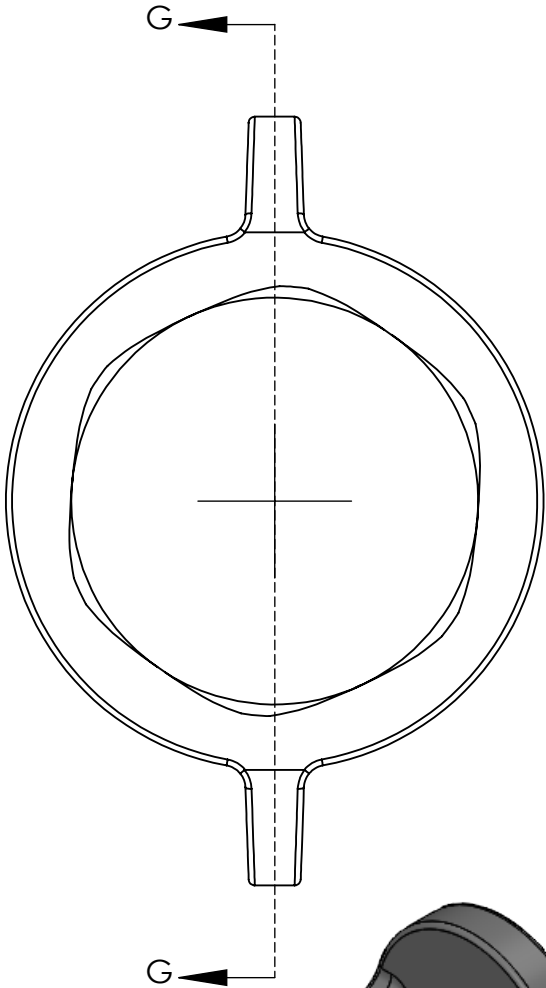


SECTION F-F

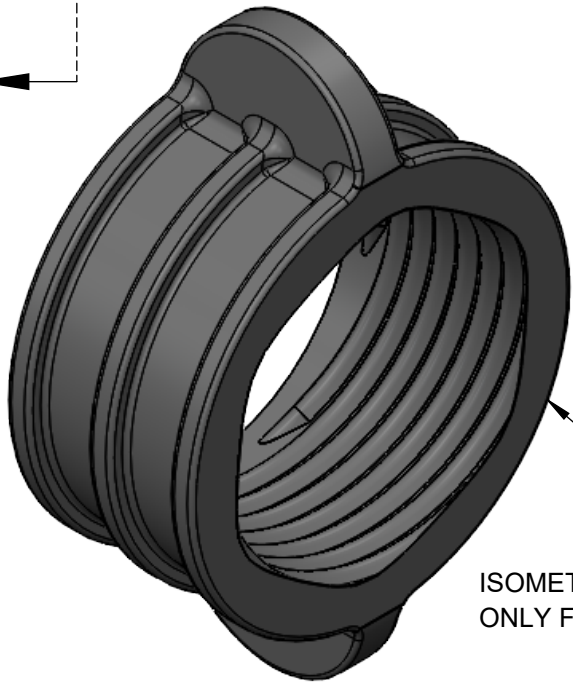


ISOMETRIC VIEW  
ONLY FOR REF.

HLW 461



SECTION G-G



ISOMETRIC VIEW  
ONLY FOR REF.

RTN 714

DIMENSION STYLE: INCHES / MM GENERAL TOLERANCES UNLESS OTHERWISE SPECIFIED		
	INCHES	MM
.X	± .020	± .508
.XX	± .010	± .254
.XXX	± .005	± .127
ANGLE ± 1° BREAK ALL CORNERS AND SHARP EDGES .030 MAX		
THIRD ANGLE PROJECTION		
PROPRIETARY AND CONFIDENTIAL THE INFORMATION CONTAINED IN THIS DRAWING IS THE SOLE PROPERTY OF VISUAL COMMUNICATIONS COMPANY, INC. ANY REPRODUCTION IN PART OR AS A WHOLE WITHOUT THE WRITTEN PERMISSION OF VISUAL COMMUNICATIONS COMPANY, INC. IS PROHIBITED.		

MATERIAL		
SEE NOTES		
FINISH		
SEE NOTES		
APPROVAL		DATE
DRAWN	K.Howard	7/7/10
CHECKED	DPZ	7/7/10
DO NOT SCALE DRAWING		

<b>VCC</b> OPTOELECTRONICS 190 BOSSTICK BLVD, SUITE 101 SAN MARCOS, CA 92069 U.S.A. PHONE: (760) 560-1300, FAX: (760) 560-1301 EMAIL: vccsales@vcclite.com		
TITLE: 10mm LOCKWASHER W/ RETAINING RING NUT		
SIZE <b>B</b>	DWG. NO. HMS 462 XXX_E	REV 002
SCALE: 4:1		SHEET 4 OF 4