

Han DD Push-In module, fem. 0,14-1,5mm²

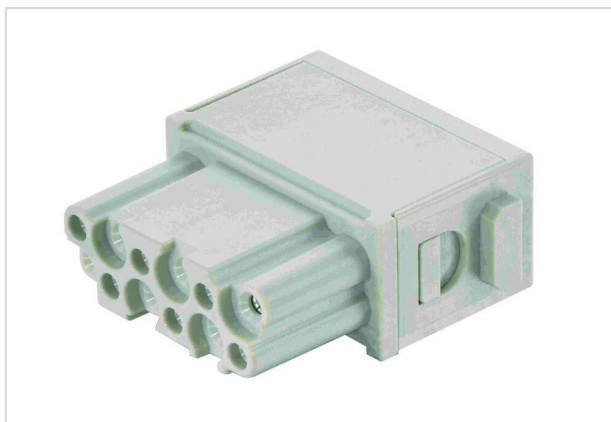


Image is for illustration purposes only. Please refer to product description.

| | |
|--------------------|---------------------------------------------------------------------------------------|
| Part number | 09 14 012 5101 |
| Specification | Han DD Push-In module, fem. 0,14-1,5mm ² |
| HARTING eCatalogue | https://b2b.harting.com/09140125101 |

Identification

| | |
|--------------------|----------------|
| Category | Modules |
| Series | Han-Modular® |
| Type of module | Han DD® module |
| Size of the module | Single module |

Version

| | |
|--------------------|---------|
| Termination method | Push-In |
| Gender | Female |
| Number of contacts | 12 |

Technical characteristics

| | |
|-------------------------|------------------------------|
| Conductor cross-section | 0.14 ... 1.5 mm ² |
| Rated current | 10 A |
| Rated voltage | 250 V |
| Rated impulse voltage | 4 kV |
| Pollution degree | 3 |
| Insulation resistance | >10 ¹⁰ Ω |
| Limiting temperature | -40 ... +125 °C |
| Mating cycles | ≥500 |

Material properties

| | |
|-------------------|------------------------|
| Material (insert) | Polycarbonate (PC) |
| Colour (insert) | RAL 7032 (pebble grey) |



Pushing Performance
Since 1945

Material properties

| | |
|-------------------------------------------|---------------|
| Material flammability class acc. to UL 94 | V-0 |
| RoHS | compliant |
| ELV status | compliant |
| China RoHS | e |
| REACH Annex XVII substances | Not contained |
| REACH ANNEX XIV substances | Not contained |
| REACH SVHC substances | Not contained |
| California Proposition 65 substances | Not contained |

Specifications and approvals

| | |
|----------------|----------------------|
| Specifications | IEC 60664-1 |
| | IEC 61984 |
| | IEC 61373 Category 2 |
| | IEC 60352-7 |

Commercial data

| | |
|--------------------------------|-----------------------------------------------------------|
| Packaging size | 2 |
| Country of origin | Germany |
| European customs tariff number | 85389099 |
| eCl@ss | 27440217 Module for industrial connectors (power/signals) |