

# CorePro LED PLT 4P



## CorePro LED PLT HF 18.5W 840 4P GX24q-4

The CorePro LED PLT 4P integrates a LED light source into a traditional fluorescent form factor. This product is the ideal solution for uplamping in general lighting applications: it meets basic lighting requirements, offers significant energy savings, and is environmentally friendly

### Product data

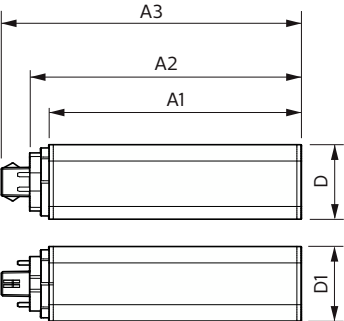
General Information		Warm-up time to 60% light	
Lighting Technology	LED	Power Factor (Fraction)	0.9
Flux measurement reference	Sphere	Voltage (Nom)	20-60 V
Switching Cycle	200,000	Temperature	
Nominal lifetime	30,000 hour(s)	Ambient temperature range	-20 °C to 35 °C
Cap-Base	GX24Q-4 [GX24q-4]	T-Case Maximum (Nom)	75 °C
Light Technical		Controls and Dimming	
Color Code	840 [CCT of 4000K]	Dimmable	No
Beam Angle (Nom)	120 degree(s)	Mechanical and Housing	
Luminous Flux	2,250 lumen	Bulb Finish	Frosted
Color Designation	Cool White (CW)	Bulb Material	Plastic
Correlated Color Temperature (Nom)	4000 K	Product Length	200 mm
Luminous Efficacy (rated) (Nom)	121 lm/W	Bulb Shape	Tube, single-ended
Color Consistency	<6	Approval and Application	
Color rendering index (CRI)	82	Energy Efficiency Class	E
LLMF At End Of Nominal Lifetime (Nom)	70 %	Energy Saving Product	Yes
Operating and Electrical		Approval Marks	RoHS compliance TUV CE marking KEMA Keur certificate
Line Frequency	20K-80K Hz	Energy Consumption kWh/1000 h	19 kWh
Input Frequency	20K-80K Hz		
Power Consumption	18.5 W		
Starting Time (Nom)	0.5 s		

CorePro LED PLT 4P

EPREL Registration Number	1361427
CE mark	Yes
EU RoHS compliant	Yes
Product Data	
Full product code	871951448790100
Order product name	CorePro LED PLT HF 18.5W 840 4P GX24q-4
Order code	929003577002

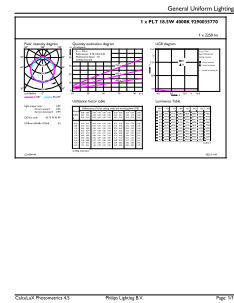
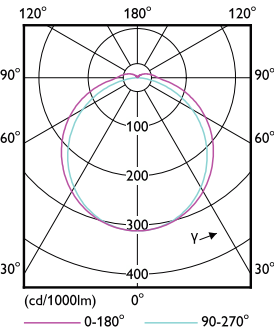
Numerator - Quantity Per Pack	1
Numerator - Packs per outer box	20
Material number (12NC)	929003577002
Full product name	CorePro LED PLT HF 18.5W 840 4P GX24q-4
EAN/UPC - Case	8719514487918

Dimensional drawing



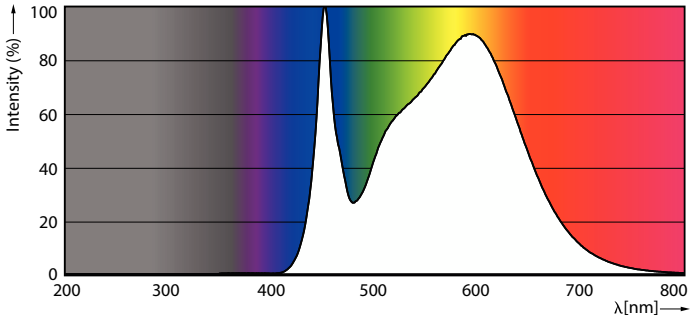
Product	D1	D2	A1	A2	A3
CorePro LED PLT HF 18.5W 840 4P GX24q-4	42 mm		139 mm	151 mm	166 mm

Photometric data



Light Distribution Diagram

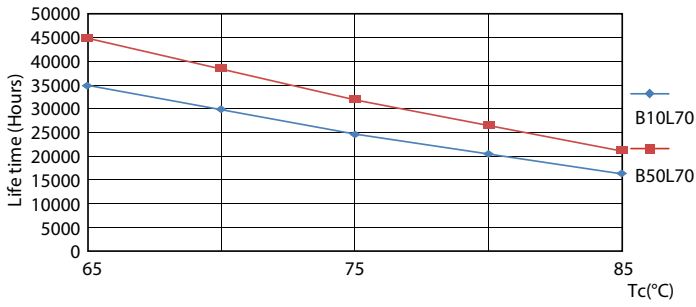
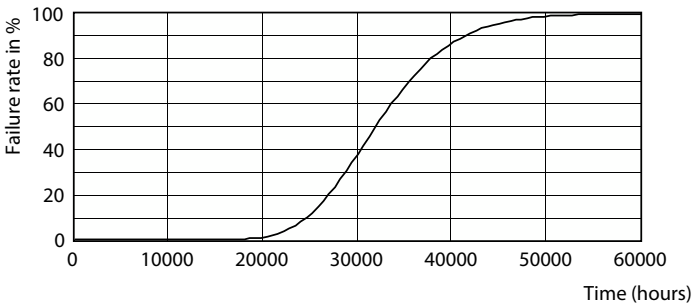
General uniform lighting - CorePro LED PLT HF 18.5W 840 4P GX24q-4



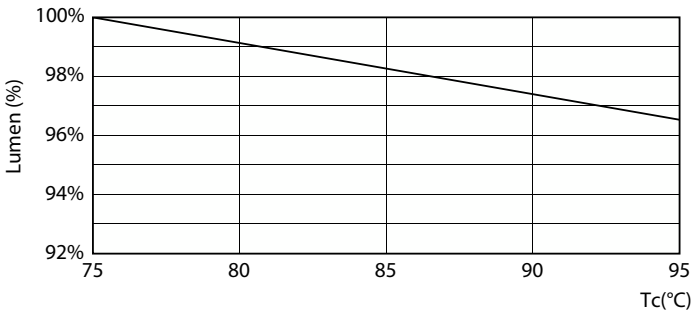
Spectral Power Distribution Colour

CorePro LED PLT 4P

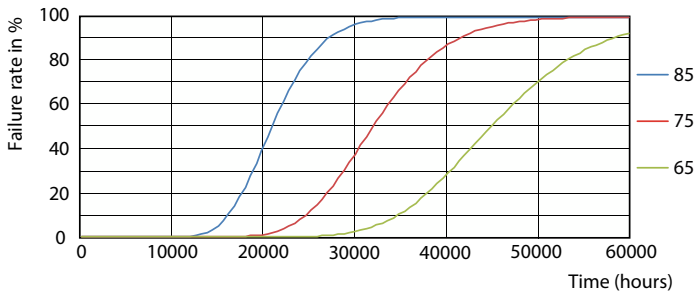
Lifetime



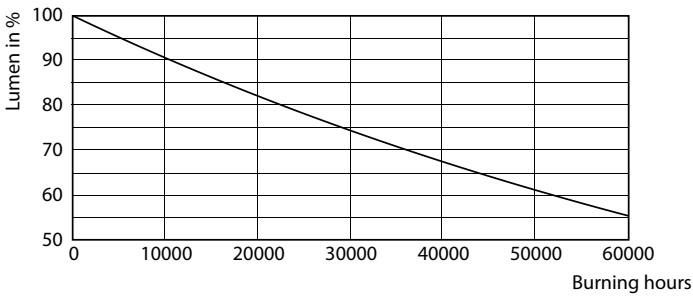
Life Expectancy Diagram - CorePro LED PLT HF 18.5W 840 4P GX24q-4



Life Expectancy Diagram



Lumen Maintenance Diagram



Life Expectancy Diagram

Lumen Maintenance Diagram - CorePro LED PLT HF 18.5W 840 4P GX24q-4

## CorePro LED PLT 4P

