



# CorePro LED PLL



## CorePro LED PLL HF 12W 840 4P 2G11

Philips CorePro LED PLL is the ideal uplamping solution for downlights & luminaires in a wide range of general lighting applications. It integrates a LED light source into a traditional fluorescent form factor to offer superb energy savings over a lifetime that's twice as long as fluorescent alternatives.

### Product data

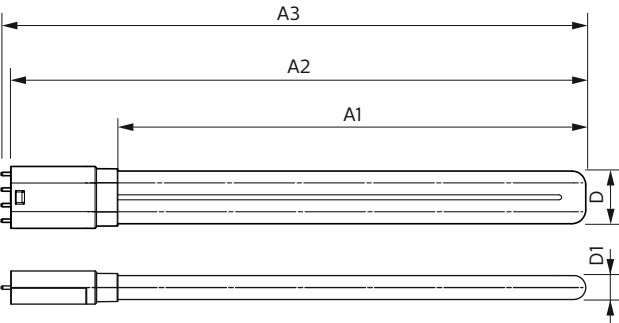
General Information		Warm-up time to 60% light	
Lighting Technology	LED	Power Factor (Fraction)	0.9
Flux measurement reference	Sphere	Voltage (Nom)	20-60 V
Switching Cycle	50,000	Temperature	
Nominal lifetime	30,000 hour(s)	Ambient temperature range	-20 °C to 45 °C
Cap-Base	2G11 [2G11]	T-Case Maximum (Nom)	70 °C
Light Technical		Controls and Dimming	
Color Code	840 [CCT of 4000K]	Dimmable	No
Beam Angle (Nom)	160 degree(s)	Mechanical and Housing	
Luminous Flux	1,500 lumen	Bulb Finish	Frosted
Color Designation	Cool White (CW)	Bulb Material	Glass
Correlated Color Temperature (Nom)	4000 K	Product Length	300 mm
Luminous Efficacy (rated) (Nom)	125 lm/W	Bulb Shape	Tube, single-ended
Color Consistency	<6	Approval and Application	
Color rendering index (CRI)	80	Energy Efficiency Class	E
LLMF At End Of Nominal Lifetime (Nom)	70 %	Energy Saving Product	Yes
Operating and Electrical		Approval Marks	RoHS compliance TUV CE marking KEMA Keur certificate
Line Frequency	20K-80K Hz	Energy Consumption kWh/1000 h	12 kWh
Input Frequency	20K-80K Hz		
Power Consumption	12 W		
Starting Time (Nom)	0.5 s		

CorePro LED PLL

EPREL Registration Number	1370822
EU RoHS compliant	Yes
Product Data	
Full product code	871951448682900
Order product name	CorePro LED PLL HF 12W 840 4P 2G11
Order code	929003579102

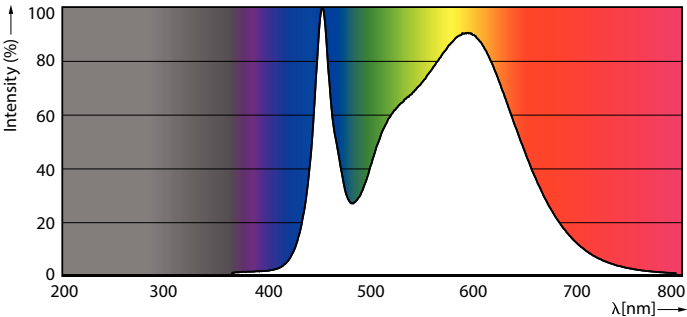
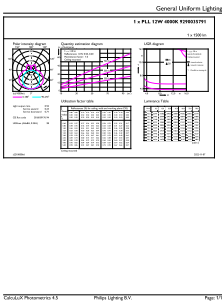
Numerator - Quantity Per Pack	1
Numerator - Packs per outer box	10
Material number (12NC)	929003579102
Full product name	CorePro LED PLL HF 12W 840 4P 2G11
EAN/UPC - Case	8719514486836

Dimensional drawing



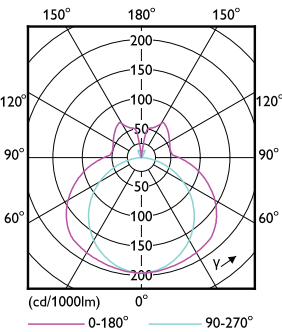
Product	D1	D2	A1	A2	A3
CorePro LED PLL HF 12W 840 4P 2G11	17 mm		250 mm	312 mm	319 mm

Photometric data



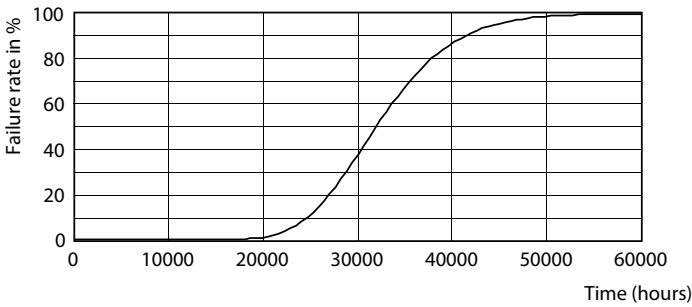
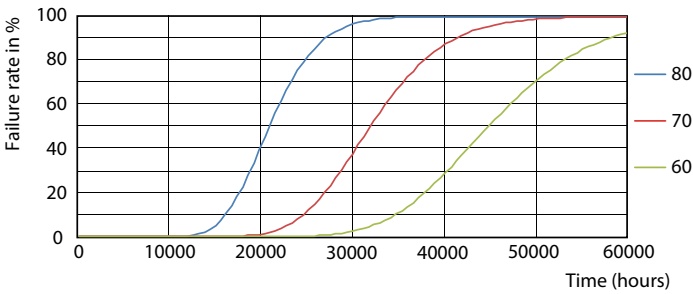
General uniform lighting - CorePro LED PLL HF 12W 840 4P 2G11

Spectral Power Distribution Colour

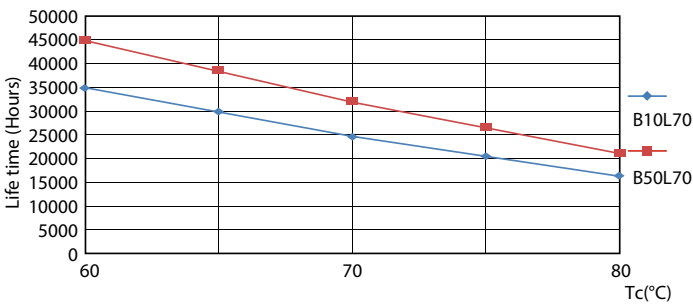


Light Distribution Diagram

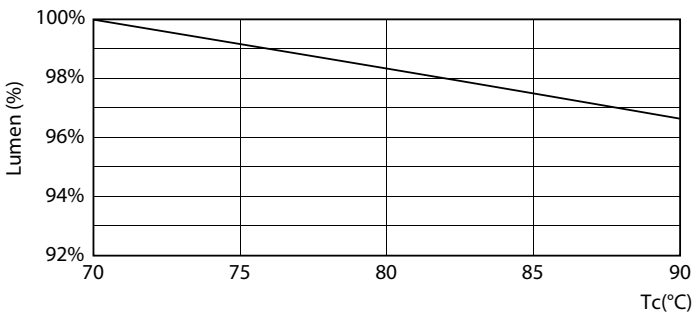
Lifetime



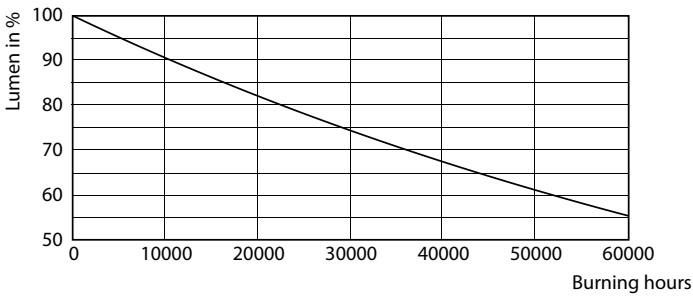
Life Expectancy Diagram



Life Expectancy Diagram - CorePro LED PLL HF 12W 840 4P 2G11



Life Expectancy Diagram



Lumen Maintenance Diagram

Lumen Maintenance Diagram - CorePro LED PLL HF 12W 840 4P 2G11

## CorePro LED PLL

