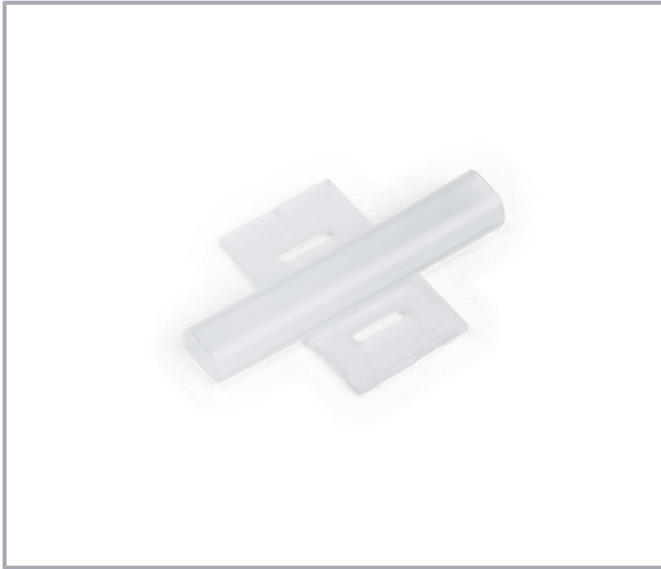


## Data sheet | Item number: 211-829

Nozzles; Length: 23 mm; For the use of 211-821; halogen-free; transparent

[www.wago.com/211-829](http://www.wago.com/211-829)



### Data

#### Technical data

Delivery form	Component
Properties	for one 211-821 marker
Printing device	Smart Printer (Thermal Transfer Printer)

#### Physical data

Length	23 mm
Sheathed cable diameter	4 ...

#### Mechanical Data

Mounting type	Mounting with cable ties
---------------	--------------------------

#### Material Data

Color	transparent
Material	Polyurethane
Adhesive information	without adhesive

Subject to changes. Please also observe the further product documentation!

WAGO GmbH & Co. KG  
Hansastr. 27  
32423 Minden  
Phone: +49571 887-0 | Fax: +49571 887-169  
Email: [info.de@wago.com](mailto:info.de@wago.com) | Web: [www.wago.com](http://www.wago.com)

Do you have any questions about our products?  
We are always happy to take your call at +49 (571) 887-44222.



Halogen-free	Yes
Weight	0.3 g

## Environmental requirements

Ambient temperature (storage)	+5 ... +40 °C
Ambient temperature (operation)	-40 ... +80 °C
Relative humidity	40 ... 80 %

## Commercial data

Product Group	2 (Terminal Block Accessories)
eCl@ss 10.0	27-40-04-01
eCl@ss 9.0	27-40-04-01
ETIM 8.0	EC001530
ETIM 7.0	EC001530
PU (SPU)	200 pcs
Packaging type	box
Country of origin	IT
GTIN	4050821675037
Customs tariff number	39269097900

## Environmental Product Compliance

RoHS Compliance Status	Compliant, No Exemption
------------------------	-------------------------

## Required accessories

### Marking accessories

Marker
--------



Item no.: 211-821

Marker; for Smart Printer; for use in nozzles; Length: 23 mm; white

[www.wago.com/211-821](http://www.wago.com/211-821)

## Downloads

### Environmental Product Compliance

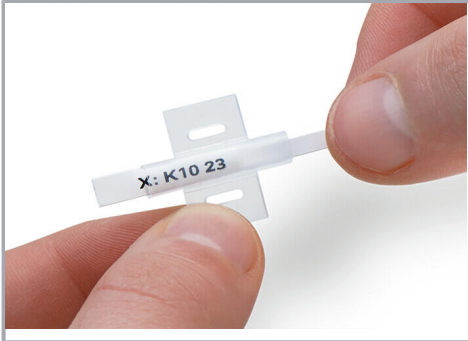
#### Compliance Search

Environmental Product Compliance 211-829	URL	Download
Nozzles; Length: 23 mm; For the use of 211-821; halogen-free; transparent		

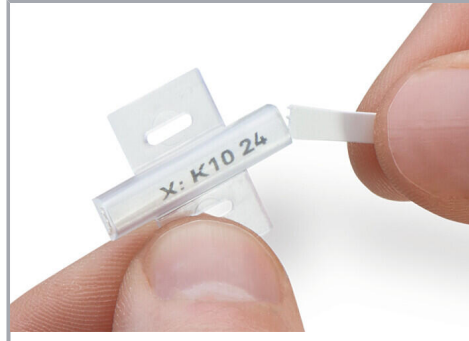
Subject to changes. Please also observe the further product documentation!

## Installation Notes

### Application



Slide the marker through the marker slot up to the end of the sleeve.



Then remove the rest of the card by twisting it off.

### Marking



Attach the marking sleeve (211-829) to individual cables or conductors via cable ties.

Subject to changes. Please also observe the further product documentation!