

Data sheet Actuator.

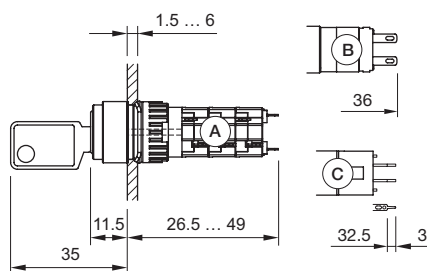
Part No.: 51-235.022D

Technical data



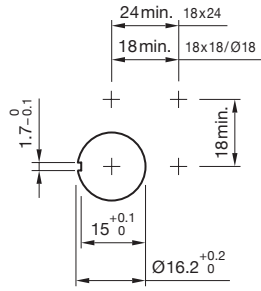
Design	raised
Front dimension	Ø 18 mm
Terminal	Plug-in terminal, 2.8 x 0.5 mm
Housing colour	Black
Weight	0.026 kg
IP front protection	IP65, according to DIN EN 60529
Contact material	Gold
Switching action	Rest (a) - Maintained
Rotary positions	2
Switching system	Snap-action switching element
Switching angle	90° right
Switching rating	250 V @ 5 A
Contacts	1 NC / 1 NO
Operating temperature	- 25 °C ... + 55 °C
Approbations	CB (IEC 61058-1), CQC, CSA, DNV, ENEC (EN 61058-1), UL
Climate resistance	Standard condition, as per DIN EN 60068-2-30, Changing condition, as per DIN EN 60068-2-14
Mechanical lifetime	50 000 cycles of operation
Tightening torque	Fixing nut max. 0.5 Nm
Hints	
	<ul style="list-style-type: none"> ▪ Standard lock: DOM 311

Dimension drawings

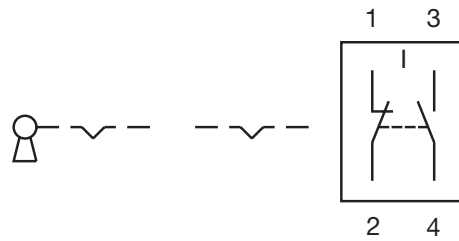


A = Solder terminal
 B = Plug-in terminal 2.8 mm x 0.5 mm
 C = Universal terminal 2.0 mm x 0.5 mm

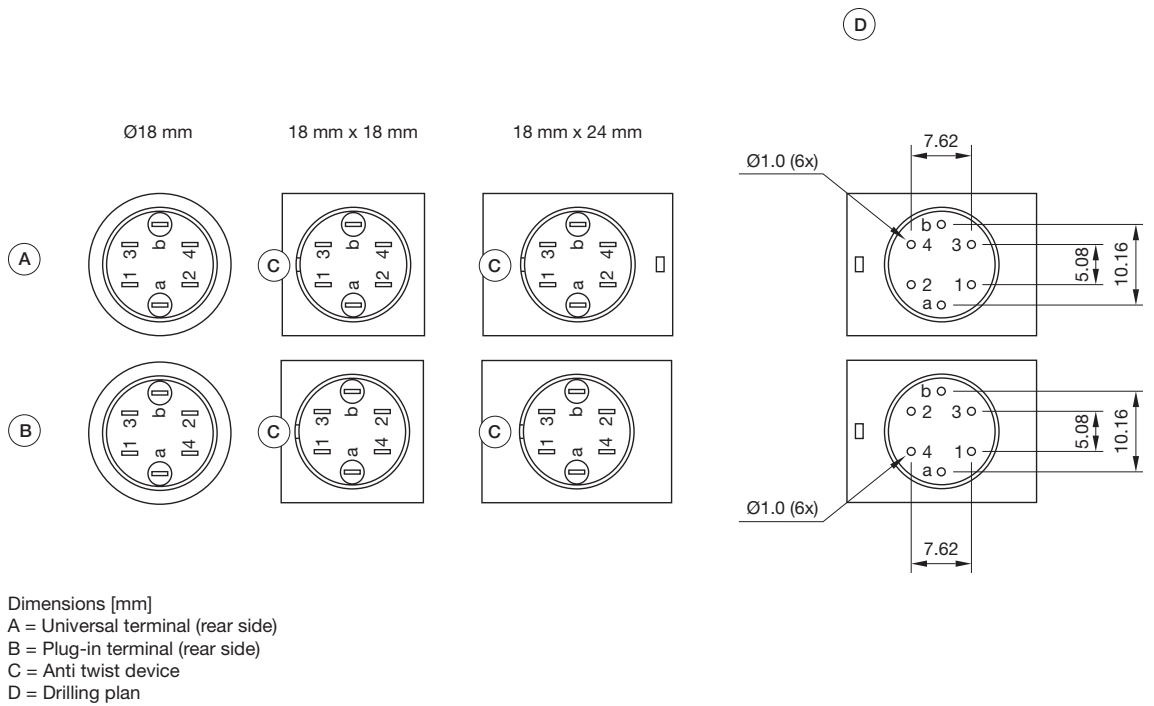
Mounting cut-outs



Wiring diagrams



Component layouts



Switching positions

