

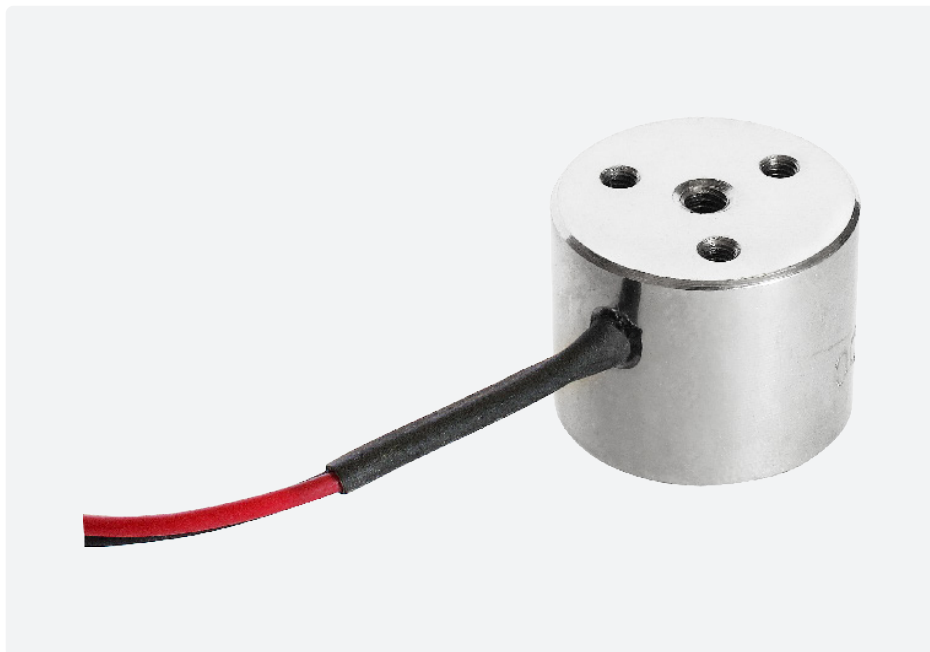
Electro-Holding Magnet: 20mm



Energise To Hold ElectroMagnet

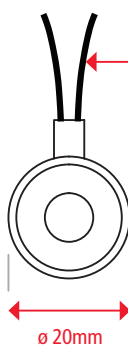
Technical Data

Mountings	Threaded holes in rear face
Finish	Bright nickel-plated with machined face
Weight	36g
Typical Holding Force	5.2kg
ED Rating	100%
IP Rating	54
Standard Operating Voltage	12VDC M52180/12VDC 24VDC M52180/24VDC
Current	12V - 210mA 24V - 100mA
Typical Power	2.4 - 2.5W
Connection Type	12VDC & 24VDC Free Leads (500mm Long)

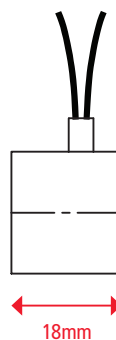


Recommended Armature Plate

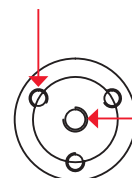
Finish	Bright nickel-plated
Diameter	25mm
Height	3mm
Screw	M3
Part Number	M52171/25ARM
Weight	15g



Leads:
1 Red & 1 Black
0.3mm Square
500mm Long



3 Holes Tapped M3
Coarse x 5mm Deep
on 14mm P.C.D.



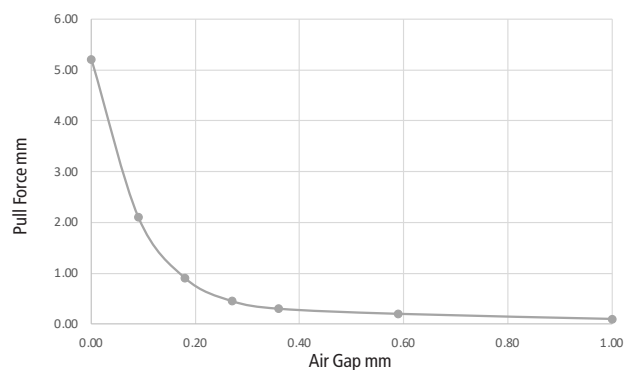
Tapped M4 Coarse
x 10mm Deep

Air Gap (mm)

Pull Force* (kg)

0.00	5.20
0.09	2.10
0.18	0.90
0.27	0.45
0.36	0.30
0.59	0.20
1.00	0.10

Electro-Holding Magnet: 20mm



* +/- 10% at room temperature

To achieve the optimum pull force 100% contact area must be achieved using the recommended armature plate. The force will be affected if other material specifications, thicknesses and surfaces are used, or if the armature fails to make positive contact over the full diameter of the face of the magnet.

Where misalignment is likely to be an issue we recommend that an oversized armature plate is used to ensure 100% full contact, this however will reduce the stated pull force by approximately 10%.