



### Features:

- 40W Small Compact Size 69.5 x 39.0x 24.0mm
- Wide AC & DC Input 85V to 305VAC
- Temperature Range -40°C to +85°C
- Over-voltage Category OVC III
- Output Range: 5V - 48VDC
- Low Standby Power
- Fully Isolated Pri - Sec >4200Vrms
- OVCIII (meet EN62477)
- Materials: UL94-V0
- UL/IEC/EN62368-1, EN61558-1, EN60335-1
- 3 Year Warranty



### Description

VTX-214-040-2### AC-DC converters is a compact size power converter. It features a wide AC input 85V to 305VAC and a DC input voltage 100 to 430VDC. The converters have been designed with low power consumption, high efficiency, high reliability, reinforced isolation. It offers good EMC performance compliant to IEC/EN61000-4 and CISPR32/EN55032 and meets IEC/EN/UL62368, EN60335, EN61558 standards. The converters are widely used in industrial, power, home appliances, instrumentation, communication and civil applications. For extremely harsh EMC environment, we recommend using the application circuit show in this Datasheet. or contact our Technical team for further support.

### Selection Guide

Part Number	Power Rating Watts	Output Voltage (VDC)	Output Current (mA)	Ambient Temp. (°C)	Efficiency Typical	Input Range
<b>VTX-214-040-205</b>	35	5	7000	50°C (85°C @ 25%)	>86%	85 - 305VAC (100 - 430VDC)
<b>VTX-214-040-212</b>	40	12	3330			
<b>VTX-214-040-215</b>	40	15	2666			
<b>VTX-214-040-224</b>	40	24	1670			
<b>VTX-214-040-248</b>	40	48	833			

**Note: Other output voltages are available upon request.**

Please contact Vigortronix for any enquiries. Products can be altered to suit custom requirements.  
The information contained in this document is subject to change without notice.

Input Specification					
Item	Conditions	Min	Typical	Max	Unit
Input Voltage	AC Input	85	-	305	VAC
	DC Input	100	-	430	VDC
Input Frequency		47	-	63	Hz
Input Current	115VAC	-	-	1.0	A
	230VAC	-	-	0.6	
Inrush Current	115VAC	-	30	-	
	230VAC	-	60	-	
Leakage Current	277VAC / 50Hz	0.1mA RMS Max			
External Input Fuse		3.15Amp/300V Slow Blow Fuse			

Output Specification					
Item	Conditions	Min	Typical	Max	Unit
Output Voltage	Output	-	+/-2	-	%
Line Regulation	Full Load	-	+/-0.5	-	
Load Regulation	0% - 100% Load	-	+/-1	-	
Ripple / Noise	20MHz Bandwidth (Peak to Peak Value)	-	100	150	mV
Stand by Power	230VAC	-	0.3	0.55	W
Temp. Coefficient		-	+/-0.02	-	%/°C
Short Circuit Protection		Hiccup, Continuous, Self-recovery			
Over Current Protection		>130% Load Self-recovery			
Over Voltage Protection		Hiccup, Continuous, Self-recovery			
Minimum Load		0	-	-	%
Hold-up Time	115VAC Input	-	8	-	mS
	230VAC Input	-	50	-	

Please contact Vigortronix for any enquiries. Products can be altered to suit custom requirements.  
The information contained in this document is subject to change without notice.

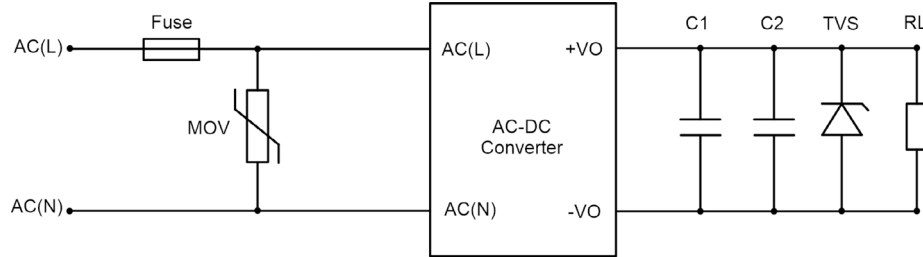
General Specification					
Item	Conditions	Min	Typical	Max	Unit
<b>Dielectric Strength</b>	Input to Output (1Min, 5mA)	4200	-	-	VAC
<b>Insulation Resistance</b>	Input to Output (500VDC)	100			M.Ohm
<b>Operating Temperature</b>		-40	-	+85	°C
<b>Storage Temperature</b>		-40	-	+85	
<b>Storage Humidity</b>		-	-	+95	%RH
<b>Soldering Temperature</b>	Wave Soldering	260 +/-5°C			
	Manual Soldering	360 +/-5°C			
<b>Switching Frequency</b>		-	65	-	KHz
<b>Altitude</b>		-	-	5000	m
<b>Safety Class</b>		CLASS II			
<b>MTBF</b>		>500KHrs @ 25°C (MIL-HDBK-217F)			
<b>Safety Approvals</b>		IEC/EN/UL62368-1, EN61558-1, IEC/EN60335-1, IEC/EN62477-1			
<b>Weight</b>		100g			

EMC Specification		
<b>Emissions</b>	CE /RE	CISPR32 / EN55032 CLASS B EN55014-1
<b>Immunity</b>	ESD	IEC/EN 61000-4-2 CONTACT +/-6KV EN55014-2
	RS	IEC/EN 61000-4-3 10V/m EN55014-2
	EFT	IEC/EN 61000-4-4 ±2KV
	SURGE	IEC/EN 61000-4-5, EN55014-2
	CS	IEC/EN 61000-4-6 10V/r.m.s. EN55014-2
	Voltage Variation	IEC/EN 61000-4-11, EN55014-2

Please contact Vigortronix for any enquiries. Products can be altered to suit custom requirements.  
The information contained in this document is subject to change without notice.

## Application Schematic for EMC

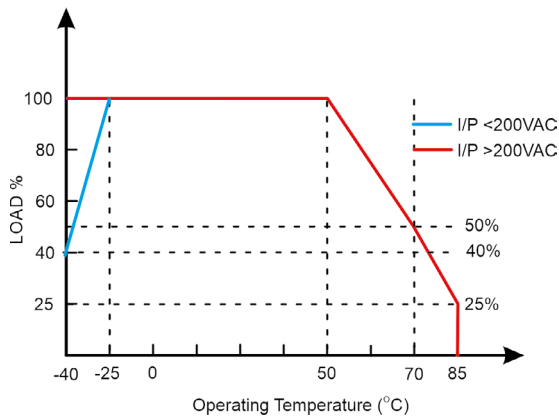
### Typical Application



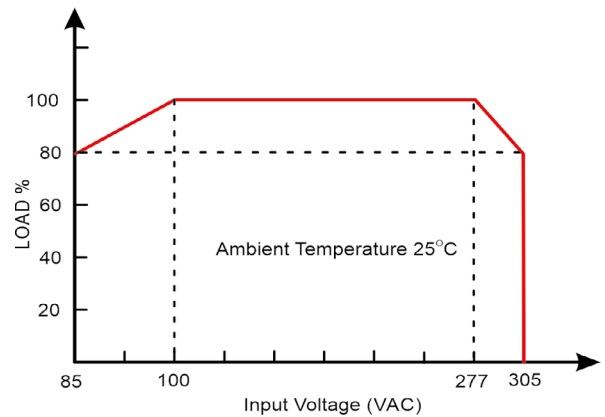
Part Number	C1	C2	TVS	Fuse	MOV	Capacitance Load Max
VTX-214-040-205	1uF /50V	330uF/16V	SMBJ7.0A	3.15A/300V Slow Blow	S14K350	6600 uF
VTX-214-040-212		330uF/16V	SMBJ20A			4400 uF
VTX-214-040-215		220uF/25V	SMBJ20A			3000 uF
VTX-214-040-224		100uF/35V	SMBJ30A			1500 uF
VTX-214-040-248		47uF/63V	SMBJ64A			470 uF
Note: For additional filtering requirements, contact technical support						

## Derating Graphs

### Temperature Derating Graph



### Input Voltage Derating Graph



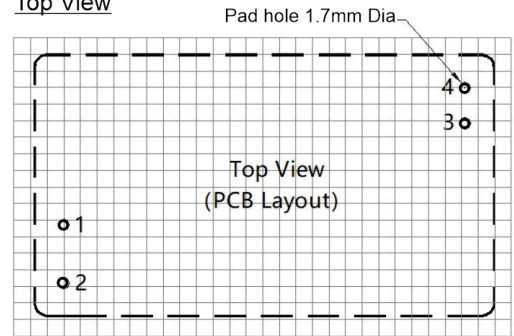
Please contact Vigortronix for any enquiries. Products can be altered to suit custom requirements. The information contained in this document is subject to change without notice.

**Dimensions**

Side View



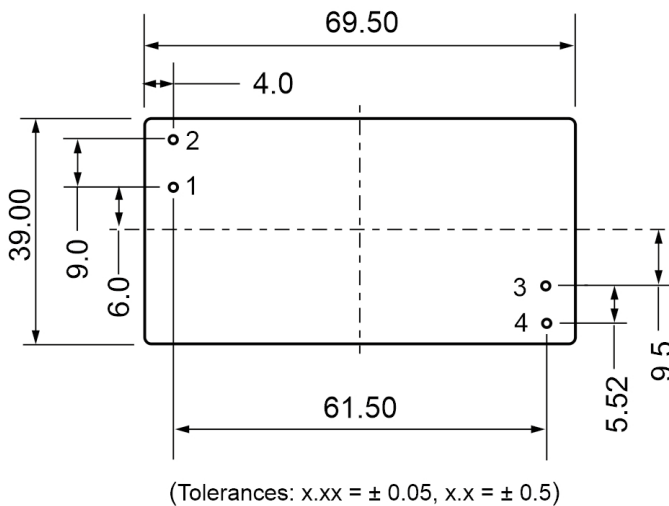
Top View



Grid Pitch 2.54 x 2.54mm (0.1 x 0.1 Inch)

Recommended PCB Pad hole 1.7mm Dia.

Pin View



PIN Number	Function
1	AC(L)
2	AC(N)
3	-Vo
4	+Vo

Please contact Vigortronix for any enquiries. Products can be altered to suit custom requirements.  
The information contained in this document is subject to change without notice.