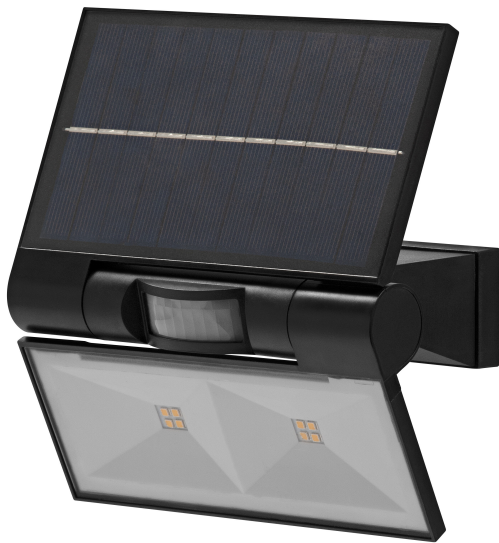


PRODUCT DATASHEET

ENDURA Flood Solar Double Sensor 2 W 3000 K

ENDURA STYLE SOLAR DOUBLE | Solar-powered flood luminaire with motion and light sensor



Areas of application

- Outdoor use (IP44)
- Replacement for floodlights with halogen lamps
- Garages
- Building facades

Product benefits

- Demand based lighting and energy saving thanks to motion and daylight sensor
- Easy adjustment of daylight and motion detection via push switch
- Energy-efficient thanks to LED technology
- Easy and quick installation
- Energy-saving alternative to luminaires that use halogen lamps

Product features

- Solar powered outdoor LED luminaire
- PIR motion detector and daylight sensor
- Battery charging via solar panel
- Battery technology: lithium-ion



TECHNICAL DATA

Electrical data

Nominal wattage	2,9 W
Nominal voltage	3,7 V
Nominal current	925.000 mA
Power factor λ	≤ 0.5
Protection class	III
Operating mode	Battery

Photometrical data

Luminous flux	380 lm
Luminous efficacy	131 lm/W
Color temperature	3000 K
Light color (designation)	Warm White
Color rendering index Ra	≥ 80
Standard deviation of color matching	≤ 6 sdc _m
Flickering metric (Pst LM)	≤ 1 %
Stroboscope effect metric (SVM)	≤ 0.4
Photobiological safety group acc. to EN62778	RG0
Photobiological safety group acc. to EN62471	RG0
Beam angle	110 °

Dimensions & Weight

Length	160.00 mm
Width	110.00 mm
Height	172.00 mm
Product weight	354.00 g

Materials & Colors

Product color	Dark gray
Housing color	Dark gray

Body material	Plastic
Cover material	Polycarbonate (PC)
Mercury content	0.0 mg

Application & Mounting

Ambient temperature range	0...+40 °C
Temperature range at storage	-20...+40 °C
Type of protection	IP44
Protection class IK (shock resistance)	IK03
Dimmable	Yes
Mounting type	Surface
Mounting location	Wall
Application environment	Outdoor
LED module replaceable	Not replaceable
With light source	Yes

Lifespan

Lifespan L70/B50 at 25 °C	25000 h ¹⁾
Number of switching cycles	12500

¹⁾ t[h]: L70 / B50 @ 25 °C (Ta), t[h]: L80 / B10 @ 25 °C (Ta), t[h]: L90 / B10 @ 25 °C (Ta)

Sensor

Type of sensor	Motion
Sensor detection angle	100 °
Sensor controlled switching time	30 s
Detection range of motion sensor	5...8 m
Detection threshold of daylight sensor	10...100 lx

Emergency lighting

Nominal voltage of battery	3.7 V
----------------------------	-------

Certificates & Standards

Standards	EMC / CE / UKCA
Luminaire with limited surface temperature, "D sign"	No

EQUIPMENT / ACCESSORIES

– Complete mounting and connecting accessories included

DOWNLOAD DATA

Documents and certificates



User instruction



Declarations Of Conformity CE



Declarations Of Conformity UKCA

LOGISTICAL DATA

Product code	Packaging unit (Pieces/Unit)	Dimensions (length x width x height)	Gross weight	Volume
4058075576636	Folding box 1	118 mm x 98 mm x 168 mm	403.00 g	1.94 dm ³
4058075576643	Shipping box 8	360 mm x 260 mm x 220 mm	3790.00 g	20.59 dm ³

The mentioned product code describes the smallest quantity unit which can be ordered. One shipping unit can contain one or more single products. When placing an order, for the quantity please enter single or multiples of a shipping unit.

DISCLAIMER

Subject to change without notice. Errors and omission excepted. Always make sure to use the most recent release.