

# Specifications and dimensions

## *Round table top single coil charger.*

**Mechanical characteristics**

- Soft-touch rubber coated single coil charger
- Micro USB-B power input and output socket

**Electrical characteristics**

- Power consumption 5W-10W, input voltage 12V +0.5/ -3.0V
- Maximum output current (via Micro USB-B ) 2.0A
- Maximum inductive charging current 2.0A

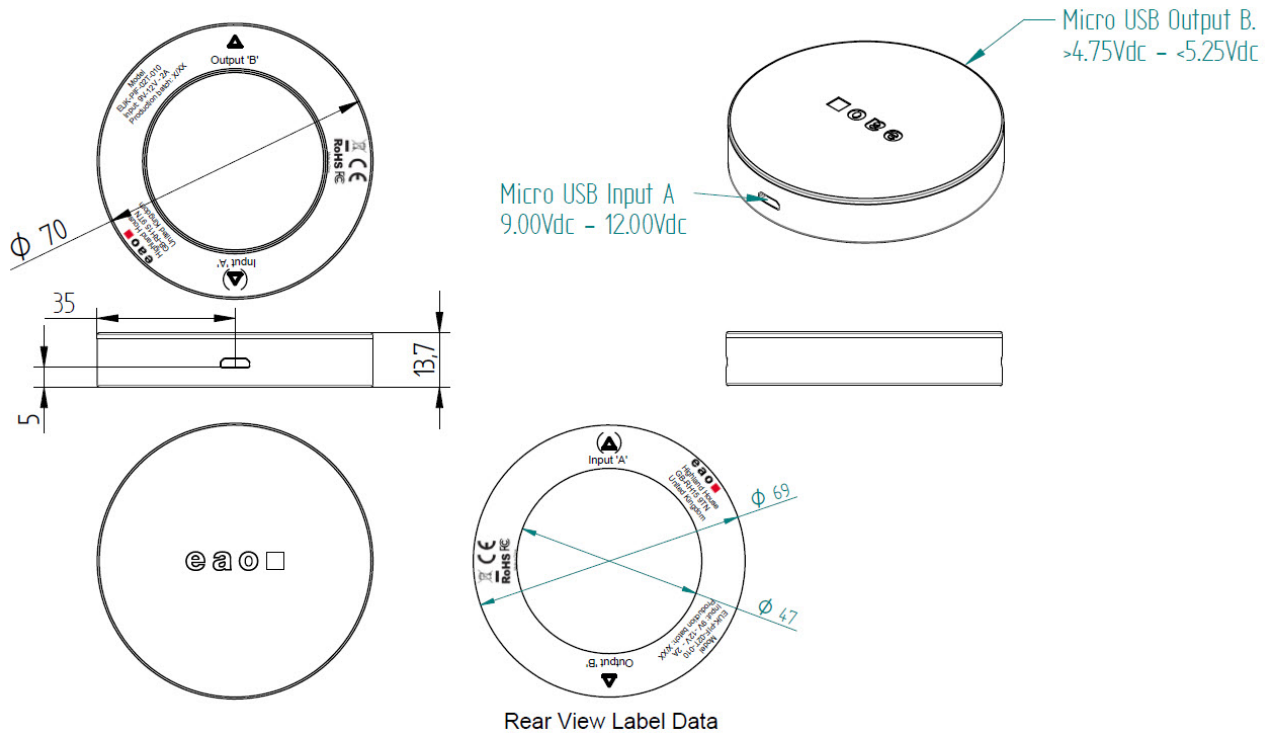
**Standards and certifications**

- Qi Certified, CE Marked
- EN 50121-3-2 Railway Apparatus and EN 62311 Human exposure EMC compliant,
- EN 61373 Rail vehicle vibration tested
- EN 45545-2 Fire protection of railway vehicle - Part 2



Name	Part No.
▪ Round table top single coil charger	PIF-02T-010

**Dimensions (mm)**



**Mechanical characteristics**

- Makrolon 6485/6555 Polycarbonate.
- 2 Micro USB-B sockets polarity fixed.  
Socket 'A' Input >9.00Vdc - <12.00Vdc.  
Socket 'B' Output >4.75Vdc - <5.25Vdc

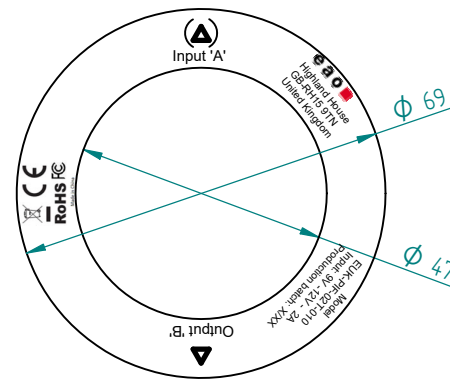
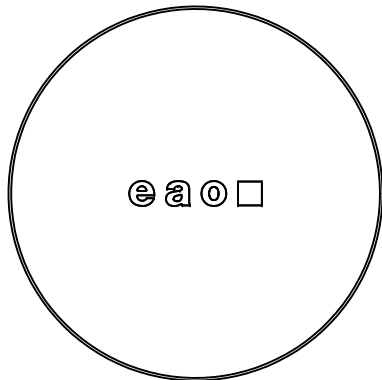
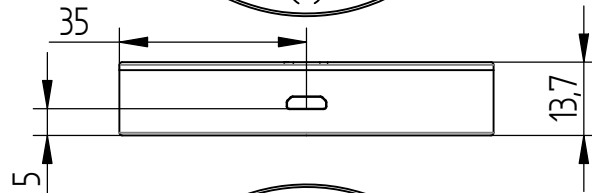
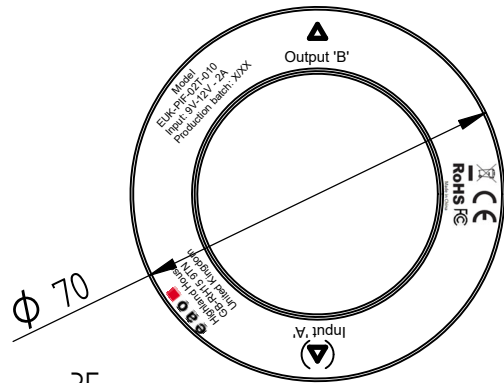
**Electrical characteristics**

- Input voltage 12.00Volts Max +0.5/-3 V
- Overvoltage trigger protection: 13Vdc
- Power consumption 10 W.
- Maximum output current (via USB-A) 2.0 A
- Maximum Inductive charging current 2.0 A
- Transference: 3mm non-conductive material.  
(Testing advised on materials between 3 and 4mm)

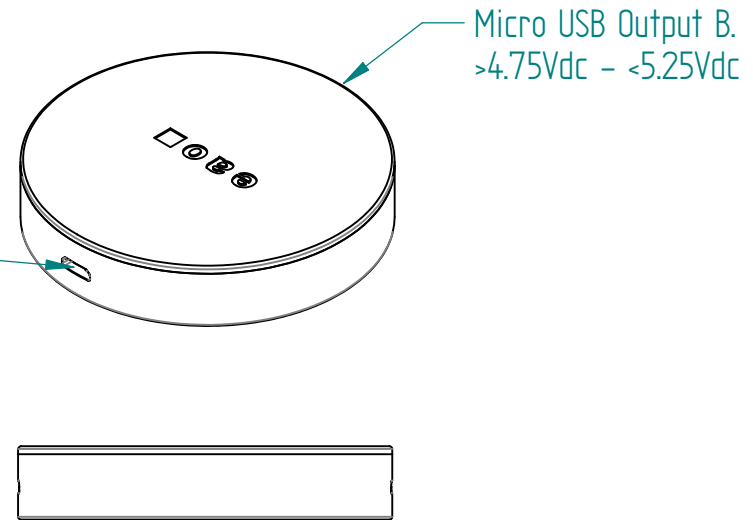
**Standards and certifications**


- Qi Certified
- EN50155 (2017), EN 50121-3-2 (2016) Railway Apparatus and EN 45545-2: Fire protection of railway vehicles – Part 2. (See reference EN45545-2 data sheet 2)
- EN62479: (2010) EN62311: (2008) EMF Human exposure compliant.
- EN 61373 Rail vehicle vibration.

REVISION HISTORY			
REV	DESCRIPTION	DATE	APPROVED



Rear View Label Data



	NAME	DATE			
DRAWN	P Fairchild	10/05/21			
CHECKED	R Richardson	TBA			
ENG APPR	P Fairchild	TBA			
MGR APPR	R Humphreys	TBA			
UNLESS OTHERWISE SPECIFIED DIMENSIONS ARE IN MILLIMETERS ANGLES ±X.X° 2 PL ±X.XX 3 PL ±X.XXX			SIZE A3	DWG NO EUK-PIF-02T-010	REV A
			FILE NAME: ROUND TABLE TOP 10Watt SINGLE COIL-Adf		
			SCALE: 1 : 1	WEIGHT: 52g	SHEET 1 OF 2