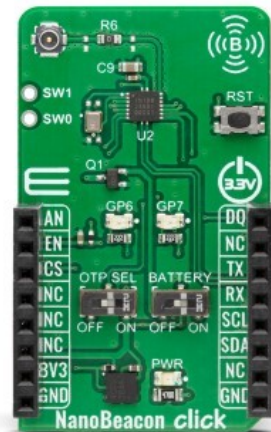


NanoBeacon Click



PID: MIKROE-5794

NanoBeacon Click is a compact add-on board that provides a powerful and efficient Bluetooth beacon solution. This board features the IN100, an ultra-low power Bluetooth 5.3 Beacon SoC from InPlay, that sets a new standard in beacon technology. Its ultra-low power consumption, enhanced privacy mode, and three beacon modes offer seamless compatibility with no Bluetooth programming required - plug and play. Its compact design houses two types of built-in memory (4Kb OTP and 4KB SRAM), UART and I2C interfaces, and a hardware security engine. With its versatile features, this Click board™ opens up a world of possibilities for various applications such as standalone retail beacon setups, asset tracking, real-time location systems (RTLS), active RFID, wireless industrial applications, and many more.

NanoBeacon Click is supported by a [mikroSDK](#) compliant library, which includes functions that simplify software development. This [Click board™](#) comes as a fully tested product, ready to be used on a system equipped with the [mikroBUS™](#) socket.

Mikroe produces entire development toolchains for all major microcontroller architectures.

Committed to excellency, we are dedicated to helping engineers bring the project development up to speed and achieve outstanding results.



ISO 27001: 2013 certification of informational security management system.
 ISO 14001: 2015 certification of environmental management system.
 OHSAS 18001: 2008 certification of occupational health and safety management system.



ISO 9001: 2015 certification of quality management system (QMS).

Specifications

Type	BT/BLE
Applications	Can be used as a standalone retail beacon setups, asset tracking, real-time location systems (RTLS), active RFID, wireless industrial applications, and more
On-board modules	IN100 - ultra-low power Bluetooth 5.3 Beacon SoC from InPlay
Key Features	Bluetooth Low Energy 5.3 compliant, three beacon modes, ease of use, two types of memory (OTP and SRAM), low-power mode advertising, RF radio, low power consumption, UART and I2C interface, security and privacy, and more
Interface	Analog,I2C,UART
ClickID	Yes
Compatibility	mikroBUS
Click board size	L (57.15 x 25.4 mm)
Input Voltage	3.3V

Resources

[mikroBUS™](#)

[mikroSDK](#)

[Click board™ Catalog](#)

[Click Boards™](#)

Downloads

[NanoBeacon click example on Libstock](#)

[IN100 datasheet](#)

[NanoBeacon click 2D and 3D files](#)

[NanoBeacon click schematic](#)

Mikroe produces entire development toolchains for all major microcontroller architectures.

Committed to excellency, we are dedicated to helping engineers bring the project development up to speed and achieve outstanding results.



ISO 27001: 2013 certification of informational security management system.
 ISO 14001: 2015 certification of environmental management system.
 OHSAS 18001: 2008 certification of occupational health and safety management system.



ISO 9001: 2015 certification of quality management system (QMS).