

## COMPACT Splicing Connector for All Conductor Types and Mounting Carrier

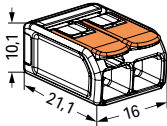
### 6 mm<sup>2</sup>; 221 Series

#### Technical Data

0.5 ... 6 mm <sup>2</sup>	20 ... 10 AWG
450 V / 4 kV / 2 ①	600 V, 30 A <sup>②</sup>
I <sub>N</sub> 41 A	600 V, 20 A <sup>②</sup>
12 ... 14 mm / 0.47 ... 0.55 inch	



Dimensions in mm



COMPACT splicing connector; for all conductor types; 2-conductor; with levers; transparent housing; continuous operating temperature (max.): 105 °C; surrounding air temperature: max 85 °C (T85)

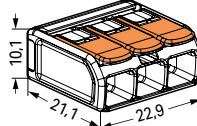
	Item No.	Pack. Unit
	221-612	500 (50)

#### Technical Data

0.5 ... 6 mm <sup>2</sup>	20 ... 10 AWG
450 V / 4 kV / 2 ①	600 V, 30 A <sup>②</sup>
I <sub>N</sub> 41 A	600 V, 20 A <sup>②</sup>
12 ... 14 mm / 0.47 ... 0.55 inch	



Dimensions in mm



COMPACT splicing connector; for all conductor types; 3-conductor; with levers; transparent housing; continuous operating temperature (max.): 105 °C; surrounding air temperature: max 85 °C (T85)

	Item No.	Pack. Unit
	221-613	300 (30)

- ① 450 V = rated voltage  
4 kV = rated impulse voltage  
2 = pollution degree  
(see Section 15)

- ② Carriers with a blue insulated housing are suitable for Ex i applications. Both clearances and creepage distances for the protection type "intrinsic safety Ex i" must be observed.

Approvals and corresponding ratings, visit [www.wago.com](http://www.wago.com)



**Compact, lever-operated splicing connectors:**  
Connect up to five stripped conductors from 0.5 to 6 mm<sup>2</sup> (20 ... 10 AWG) – without tools!

#### How these work:

Pull up one of the orange operating levers to open the clamping unit. Then insert the conductor and push the lever back down, flush with the connector housing.

#### Safety:

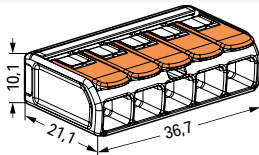
The lever's specially designed rest position reliably prevents accidental unclamping of a connected conductor. Application safety, for any type of conductor (solid, stranded, fine-stranded), is confirmed by approvals like ENEC or UL.

ENEC is the European mark for electrical products that demonstrates compliance with European safety standards. The ENEC mark is subjected to the same EN standards as the VDE mark.

While the VDE mark is only permitted in Germany, the ENEC mark is accepted in more than 20 European countries.



Dimensions in mm



COMPACT splicing connector; for all conductor types; 5-conductor; with levers; transparent housing; continuous operating temperature (max.): 105 °C; surrounding air temperature: max 85 °C (T85)

	Item No.	Pack. Unit
	221-615	150 (15)



94,2 mm / 3.71 inch

Mounting carrier; for 2-, 3- and 5-wire splicing connectors (6 mm<sup>2</sup>); 19.3 mm wide

Color	Item No.	Pack. Unit
orange	221-510	50 (10)
blue	221-510/000-006 ②	50 (10)
dark gray/yellow	221-510/000-053	50 (10)

#### Accessories; item-specific

Marking strips; on reel; 6 mm wide; plain; self-adhesive; white

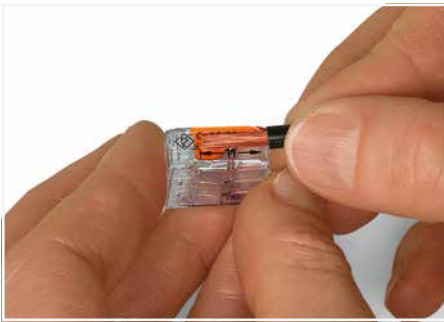
white	210-833	1
-------	---------	---



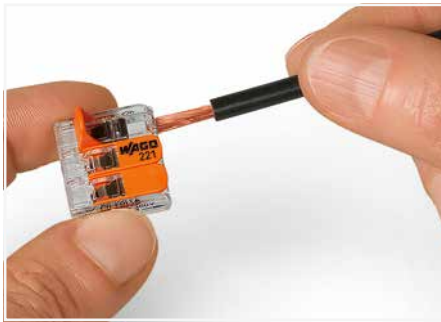
# COMPACT Splicing Connectors for All Conductor Types

## 221 Series

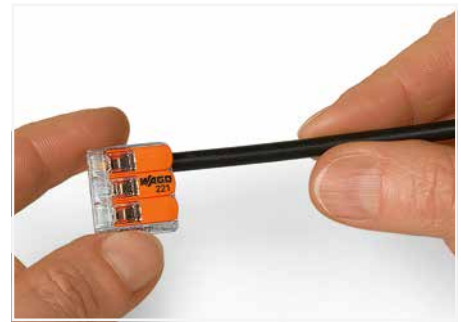
### Description and Installation



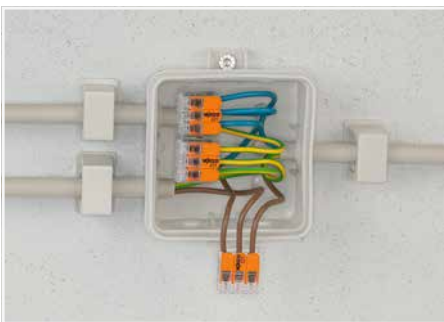
Strip conductor to 12 ... 14 mm (0.47 ... 0.55 inch).



Termination: Lift the lever to open the clamping unit and insert a stripped conductor.



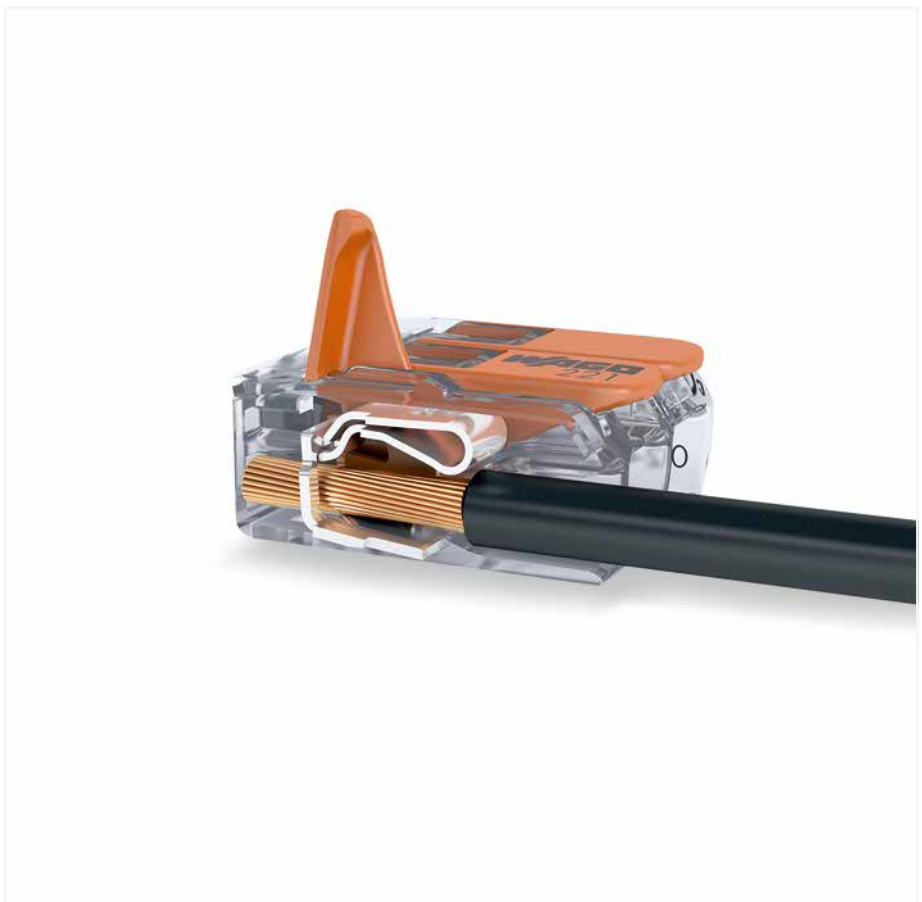
Then, lower the lever to close the clamp.



Wiring fine-stranded conductors in a junction box.



Custom low-voltage lighting system



Wiring fine-stranded conductors in a junction box for in-floor heating.



Lighting distribution in ceiling canopy



Pendant light connection in suspended ceilings

CAGE CLAMP® terminates the following copper conductors:  
solid "s"      stranded "st"

fine-stranded "f-st",  
also with tinned  
single strands

fine-stranded,  
tip-bonded