

# Data sheet E-stop protective shroud.

*Part No.: 84-909*

## Technical data

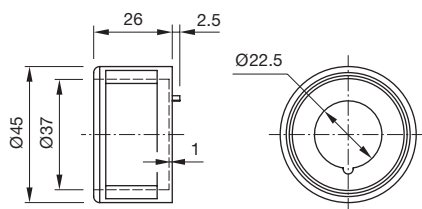


Diameter	45 mm
Dimension	Ø 45 mm
Colour	Yellow
Weight	0.021 kg
IP front protection	IP40
Material	Metal
Colour RAL	1003 RAL

### Hints

- Front panel thickness 1 ... 3 mm
- With anti-twist device
- When using a protective shroud the e-stop or stop-switch has to be turned by 180° to be mounted. See dimensional drawing
- The protection shroud Part No. 84-909 is not suitable for a proper use of emergency-stop. It can obstruct a spontaneous operation of the emergency-stop switch
- This shroud Part No. 84-906 is not compliant to EN ISO 13850. There are no restrictions when combined with stop switches.

## Dimensions



for Part No. 84-909