



Hammond Mfg. Co. Ltd., Electronics Division

www.hammondmfg.com

1750S

TUBE GUITAR AMPLIFIER - OUTPUT TRANSFORMER

- Designed for drop in replacement of original units such as Traynor¹ Base Mate YBA-2B (A1339)
- Constructed to look similar to original factory units (where possible).
- Material used & design specifications were kept as close as possible to the original part to preserve the stock "tone".
- Open style with minimum 12" long primary and secondary leads
- Frequency response 50Hz - 12KHz (0/-4dB reference @ 1KHz)
- Distortion is less than 1% @ 50Hz

ELECTRICAL SPECIFICATIONS

| Characteristics | | Typical | |
|-----------------------|-----------|-------------------|-----------|
| Input Impedance | | 5100 Ohms | |
| Output Impedance | | 8 Ohms | |
| Output Power | | 25 W | |
| | | | |
| DCR | | | |
| Primary Brown-Blue | | 380.0 Ohms | |
| Secondary Black-Green | | 0.751 Ohm | |
| | | | |
| Inductance | Impedance | @ 60Hz, 10.0 V OC | |
| Primary Blue-Brown | | 56.4H | 23.4 KOhm |
| | | | |
| Leakage Inductance | | @ 60Hz, 10.0 V SC | |
| Primary Blue-Brown | | 11.37 mH | |
| | | | |
| Dielectric Strength | | 1500VRMS | |
| Temperature Range | | -40 to 105 degC | |

TEST CONDITIONS

Measurement instruments:

D scope series iii audio analyzer

Wayne Kerr 3255B with a 3265B

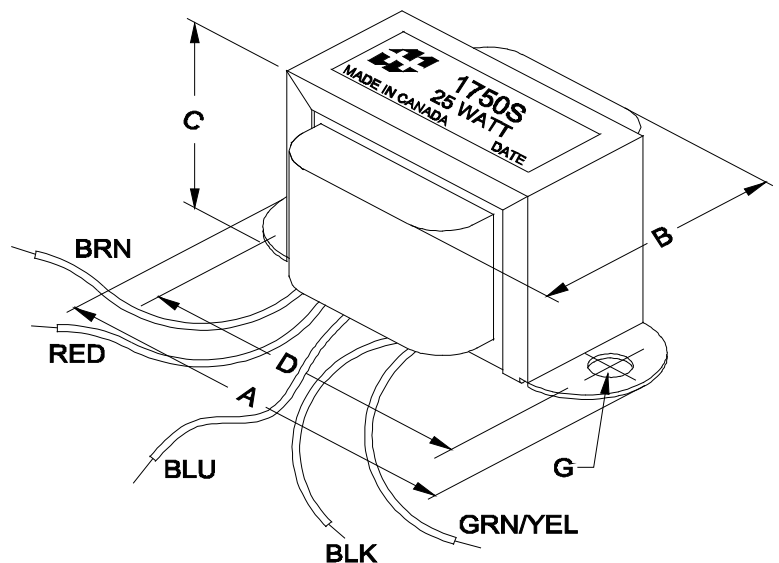
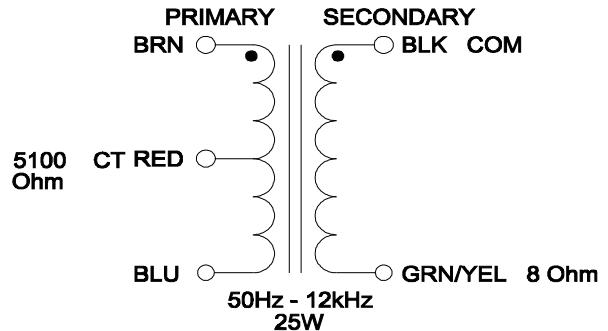
Keithley 2010 DVM

Hp4192a impedance analyzer

* All graphs input level 27dBu @1.0KHz reference.

**The results are typical and are subject to normal manufacturing and electrical tolerances.

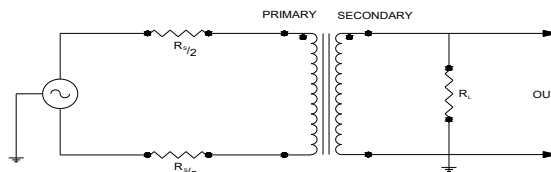
¹DISCLAIMER: Hammond Mfg. is not affiliated with Fender Musical Instruments Corp., Marshall Amplification, Yorkville/Traynor, AMPEG or VOX Amplification companies. Amplifier model names are trademarks of the amplifier companies and are just listed here for reference purpose only.



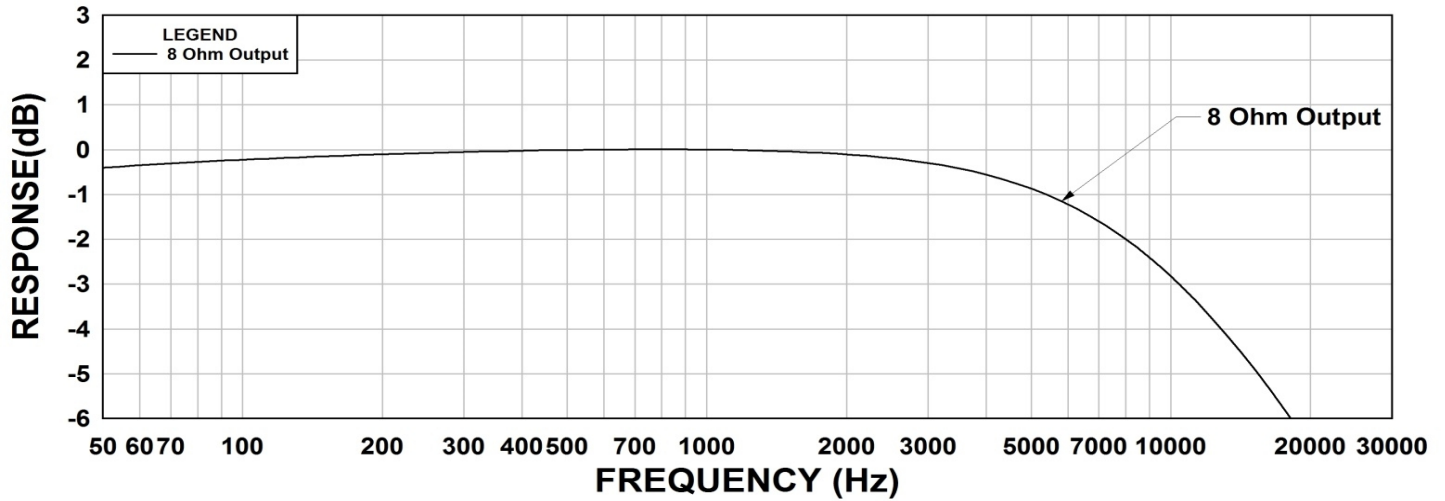
NOTE: ALL LEADS ARE 12" LONG MIN. OUT.

| Dimensions | | | | | |
|------------|---------------|---|---------------|---|---------------|
| A | 3.688" ±0.063 | C | 2.308" ±0.063 | | |
| B | 2.120" MAX | D | 3.125" ±0.063 | G | 0.187" ±0.015 |

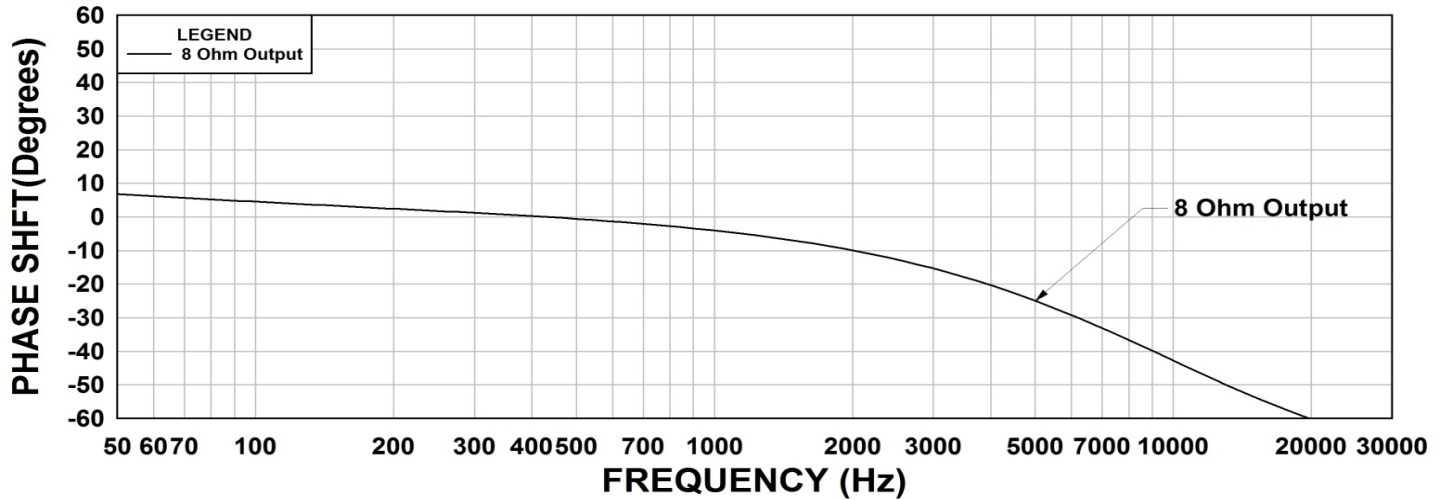
TYPICAL TEST CIRCUIT



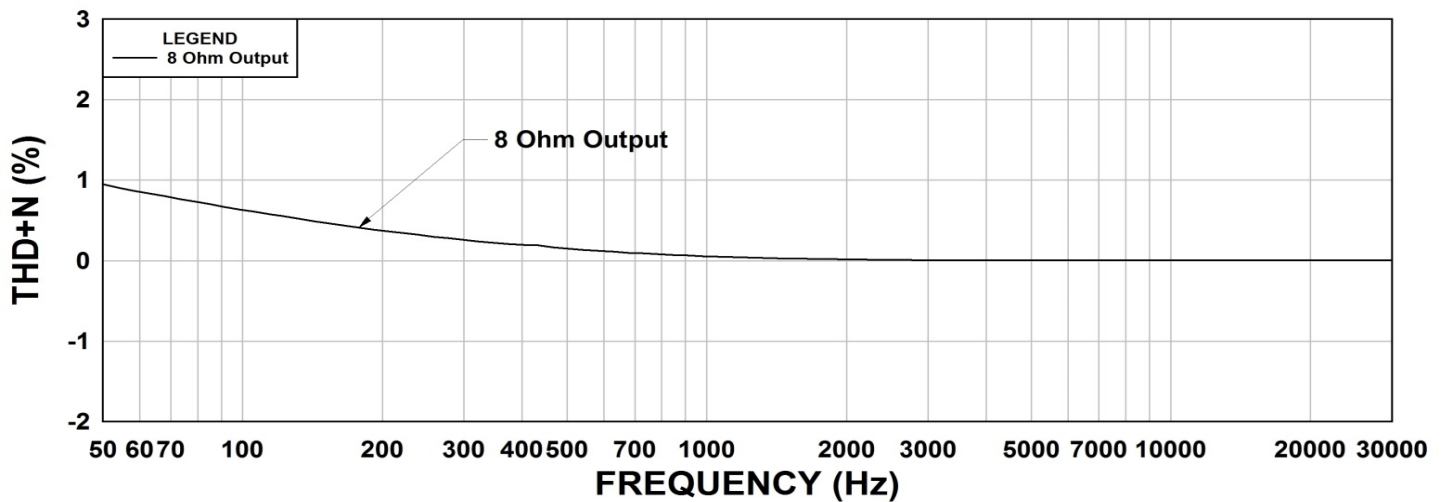
1750S Frequency Response RS = 5100 Ohms



1750S Phase Shift RS = 5100 Ohms



1750S THD+N RS = 5100 Ohms



This drawing and the information in it is the property of Hammond Manufacturing. It may not be reproduced, transmitted or used in any manner whatsoever without the written permission of Hammond Manufacturing. Data subject to change without notice.