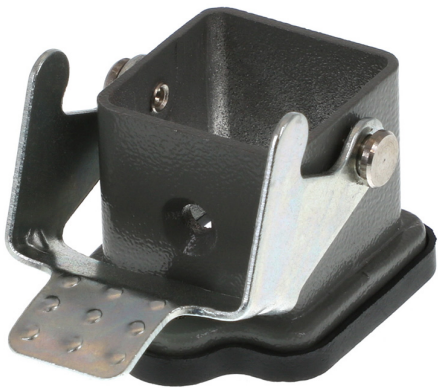




Part Number : [936010616](#)
Product Description : GWconnect STD -
Standard, Single Lever Bulkhead Mount
Housing, Die-cast Aluminum, with 1 Lever,
Vertical, with Gasket, Size 3A «21x21», Grey
Series Number : 93601
Status : Active
Product Category : Heavy-Duty Connectors
Engineering Number : 7803.6202.0




Documents & Resources

Drawings
[Drawing 936010616_sd.pdf](#)

Product Environment Compliance

Compliance

GADSL/IMDS	Not Relevant
China RoHS	
EU ELV	Not Relevant
Low-Halogen Status	Low-Halogen per IEC 61249-2-21
REACH SVHC	Not Contained per D(2023)3788-DC (14 Jun 2023)
EU RoHS	Compliant per EU 2015/863

Multiple Part Product Compliance Statements

- Eu RoHS
- REACH SVHC
- Low-Halogen

Multiple Part Industry Compliance Documents

- IPC 1752A Class C
- IPC 1752A Class D
- Molex Product Compliance Declaration
- IEC-62474

Part Details

General

Status	Active
Category	Heavy-Duty Connectors
Series	93601
Description	GWconnect STD - Standard, Single Lever Bulkhead Mount Housing, Die-cast Aluminum, with 1 Lever, Vertical, with Gasket, Size 3A «21x21», Grey
Comments	IP67 with screw gasket.
Component Type	Single Lever Bulkhead Housing
IP Rating	IP66
Product Family	GWconnect Heavy Duty Connectors (HDC)
Product Name	GWconnect
Standard	ANSI/UL 50, ANSI/UL 50 E, CSA C22.2 No.94-1-2, EN 61984
Type	STD
UPC	887191838137

Agency

CSA	256883
UL	E249674

Electrical

Voltage - Maximum	230V / 400V
-------------------	-------------

Physical

Component Size	3A «21x21»
Housing Coating	Polyester Powder
Housing Color	Grey RAL 7037
Lock to Mating Part	Yes
Material - Gasket	NBR

Material - Housing	Die-cast Aluminum
Material - Lever	Zinc Plated Steel
Mounting Style	Bulkhead
Net Weight	22.000/g
Number of Levers	1
Packaging Type	Bag
Thread Size	N/A
Thread Type	N/A

Use with Part(s)

Description	Part Number
Use With	Size 3A «21x21» S-A, S-D, S-Q, S-IEC, and S-CX Inserts

This document was generated on Oct 18, 2023