



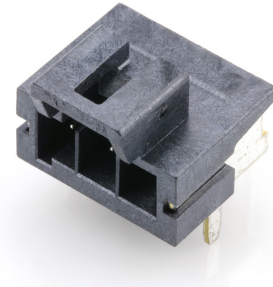
**Part Number :** [1723103103](#)

**Product Description :** Ultra-Fit Right-Angle Header with Solder Nail, 3.50mm Pitch, Single Row, 3 Circuits, Tin (Sn) Plating, Black, Glow-Wire Capable

**Series Number :** 172310

**Status :** Active

**Product Category :** PCB Headers and Receptacles



---

## Documents & Resources

### Drawings

[Drawing 1723103103\\_sd.pdf](#)

[Packaging Design Drawing PK-172310-9001-001.pdf](#)

### 3D Models and Design Files

[3D Model 1723103103\\_stp.zip](#)

[Symbol Footprint Data SYM-172310-3103-001.zip](#)

### Specifications

[Application Specification 1723230003-000.pdf](#)

[Product Specification 1723230001-TS-000.pdf](#)

[Product Specification 1723231000-PS-CH-000.pdf](#)

[Product Specification 1723231000-PS-ES-000.pdf](#)

[Product Specification 1723231000-PS-JP-000.pdf](#)


[Product Specification 1723231000-PS-SK-000.pdf](#)

[Product Specification PS-172323-0001-001.pdf](#)

---

## Product Environment Compliance

### Compliance

GADSL/IMDS	Compliant with Exemption 33; 44
China RoHS	
EU ELV	Not Relevant
Low-Halogen Status	Low-Halogen per IEC 61249-2-21
REACH SVHC	Not Contained per D(2023)3788-DC (14 Jun 2023)
EU RoHS	Compliant per EU 2015/863

## Multiple Part Product Compliance Statements

- Eu RoHS
- REACH SVHC
- Low-Halogen

## Multiple Part Industry Compliance Documents

- IPC 1752A Class C
- IPC 1752A Class D
- Molex Product Compliance Declaration
- IEC-62474
- chemSHERPA (xml)

## EU RoHS Certificate of Compliance

---

### Part Details

#### General

Status	Active
Category	PCB Headers and Receptacles
Series	172310
Description	Ultra-Fit Right-Angle Header with Solder Nail, 3.50mm Pitch, Single Row, 3 Circuits, Tin (Sn) Plating, Black, Glow-Wire Capable
Application	Power, Wire-to-Board
Comments	See Product Specification for maximum current rating by circuit size and wire AWG
Component Type	PCB Header
Product Family	Ultra-Fit Power Connectors
Product Name	Ultra-Fit
UPC	889056866019

#### Electrical

Current - Maximum per Contact	14.0A
Voltage - Maximum	600V AC (RMS)/DC

#### Physical

Breakaway	No
Circuits (Loaded)	3
Circuits (maximum)	3

Color - Resin	Black
Durability (mating cycles max)	25
First Mate / Last Break	No
Glow-Wire Capable	Yes
Guide to Mating Part	No
Keying to Mating Part	Yes
Lock to Mating Part	Yes
Material - Metal	Copper Alloy
Material - Plating Mating	Tin
Material - Plating Termination	Tin
Material - Resin	Liquid Crystal Polymer
Net Weight	1.317/g
Number of Rows	1
Orientation	Right Angle
Packaging Type	Tray
PC Tail Length	3.20mm
PCB Locator	Yes
PCB Retention	Yes
PCB Thickness - Recommended	1.60mm
Pitch - Mating Interface	3.50mm
Pitch - Termination Interface	3.50mm
Plating min - Mating	1.524µm
Plating min - Termination	1.524µm
Polarized to Mating Part	Yes
Polarized to PCB	Yes
Shrouded	Fully
Temperature Range - Operating	-40° to +105°C
Termination Interface Style	Through Hole

---

## Mates With / Use With

### Mates with Part(s)

Description	Part Number
-------------	-------------

Ultra-Fit Tangless Receptacle Housing, 3.50mm Pitch, Single Row, 3 Circuits, Black, Glow-Wire Capable	<u>1722563103</u>
--	-------------------

---

---

This document was generated on Oct 18, 2023