

# **PRO-ELEC**



**Infrared Motion Sensor 360 Degrees**  
**Model: PELL0478**

**Please read these instructions carefully before use and retain for future reference.**

This sensor must be installed by a qualified electrician in accordance with current building and IET wiring regulations (BS7671).

### **IMPORTANT SAFETY INFORMATION**

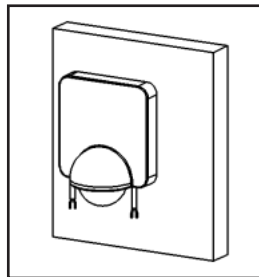
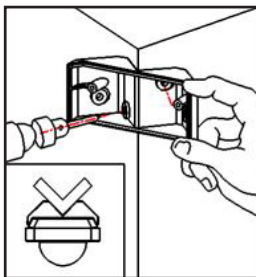
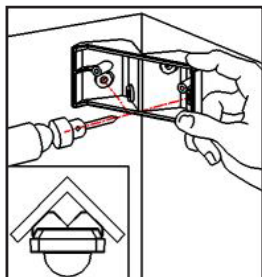
- This sensor is suitable for unearthed lighting fittings (Class II).
- Check that the voltage indicated on the rating plate corresponds with that of the local network before connecting the appliance to the mains power supply.
- The sensor is suitable for connection to a 220-240V, 50Hz supply. It is designed for permanent connection to fixed wiring, which must be a suitable circuit protected by an RCD with an operating current not exceeding 30mA and an MCB or fuse of the correct rating.
- Avoid mounting the sensor close to heat sources such as heating vents.
- Avoid mounting the sensor above objects that may move in wind.
- It is suitable for use in an ambient temperature between -20°C and +40°C and Working Humidity: <93%RH. For sheltered outside use only.

### **WHAT'S INCLUDED**

- IR Sensor.
- Mounting screws and wall plugs.
- User manual.

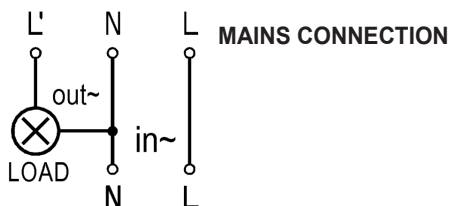
### **POSITIONING**

- Do not install into damp or conductive surfaces such as metal. It should be placed away from any flammable materials.
- Before drilling any fixing holes, check that there are no hidden obstructions behind the mounting surface such as pipes or cables.
- The sensor can be flush wall or corner mounted using the bracket supplied.
- If using the corner bracket, having established the location of the mains supply wiring the bracket must be positioned above the wiring with reference to the position of the wiring grommets on the sensor.
- Use the bracket to mark the walls and then drill and fit wall plugs the using the screws supplied fasten the bracket to the wall corner.
- The bracket can be used for internal or external corners by using the suitable fixing points.



## INSTALLATION

- Remove the screw on the bottom left corner of the sensor and remove the cover.
- Pivot the front part of the sensor upwards to reveal the electrical connections and mounting holes.
- Ensure the supply is isolated then pass the mains supply wire through either grommet in the rear mounting panel.
- Use the sensor to mark the position for fixing holes and drill the surface and fit wall plugs then secure the sensor using two screws.
- If corner mounting is required, attach to the corner bracket previously located using two self tapping screws.
- Connect the wires to the connector block according to the following diagram:-



- Pivot the front part of the sensor down into its working position and then restore the mains power.

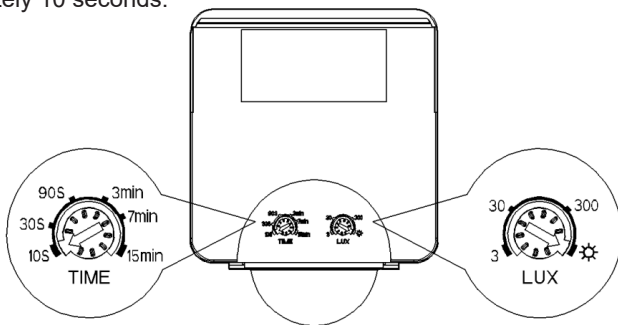
**Note:** Test it's operation and make any adjustment to the settings.

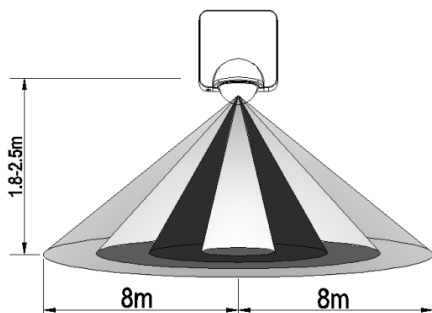
- When complete and operating as required, refit the front cover and locating screw which hides the setting controls and prevents unauthorised adjustment.

## OPERATION

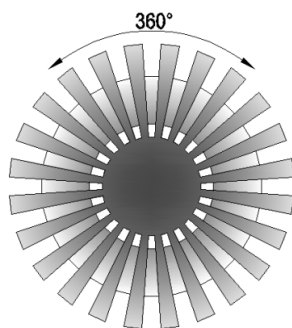
**Allow at least 30 sec for the sensor to initialise before making adjustments.**

- There are two adjustments on the front of the PIR sensor, one adjusts the duration the load device remains powered (TIME), the second one is to set the level of ambient light (LUX) before the sensor switches the load.
- Some trial and error may be required to set these correctly. Turn clockwise to increase the setting.
- To set the time duration in a well lit environment, set the LUX control to maximum then adjust the TIME downwards to the setting required for normal operation.
- The sensor continues to apply power to the load as long as an induction signal is detected. Once no induction is detected the load is switched off after approximately 10 seconds.





Height of installation: 1.8-2.5m



Detection Distance: Max.8m

## CLEANING & MAINTENANCE

- Clean the sensor only with a soft dry cloth. Do not use any chemicals, abrasives or solvents that could damage the casing or lens.

## SPECIFICATION

|                            |   |
|----------------------------|---|
| <b>Input Voltage</b>       | 220 - 240V AC 50Hz                          |
| <b>Power consumption</b>   | 0.5W approx                                 |
| <b>Ambient light</b>       | <3 - 2000 Lux (adjustable)                  |
| <b>Time delay</b>          | Min 10 sec / Max 15 min approx (adjustable) |
| <b>Rated load</b>          | 600W CF/LED ~ 1200W Incandescent            |
| <b>Detection angle</b>     | 360°  |
| <b>Detection range</b>     | 8m (max)                                    |
| <b>Motion Detection</b>    | 0.6-1.5m/s                                  |
| <b>Installation height</b> | 1.8 - 2.5m                                  |
| <b>Ingress rating</b>      | IP54  |



### INFORMATION ON WASTE DISPOSAL FOR CONSUMERS OF ELECTRICAL & ELECTRONIC EQUIPMENT.

When this product has reached the end of its life it must be treated as Waste Electrical & Electronic Equipment (WEEE). Any WEEE marked products must not be mixed with general household waste, but kept separate for the treatment, recovery and recycling of the materials used. Contact your local authority for details of recycling schemes in your area.

Made in China  
PR2 9PP  
PO Box 13362 Dublin 2  
Man Rev 1.0