



Product Change Notification

Date Issued :	October 10, 2023	PCN Number :	514415
Reason for Change :	Equipment Transfer, Production Transfer or Rearrangement		
Description of Change :	This notification is to inform you of molds and Assy line transfer that have been issued to manufacture the affected part(s). This PCN is due to where the demand is located and desire to local to local supply. The molds and Assy line have been moved to another location/site/facility from Chengdu to Guad 2. We are starting these transfers in later Q2 2024. No product changes will be made as part of this change.		
Assessment of Change :	No change to parts - Form/Fit/Function		
Planned Implementation Date :	May 15, 2024		
Sample Availability Date:	March 11, 2024		
Internal Molex Qualification Date :	March 11, 2024		
Last date to request Samples by Customer :	March 04, 2024		
Traceability Code Markings / Date :	Date code		

Before Picture

Overview Description of Change

- All these part numbers are Molex proprietary designs, therefore considered catalog/general market product.
- There is no impact to product fit, form, nor function with these transfers.
- Production validations will be approved by OEM's.
- Guadalajara 2 operations started in June 2022.
- Request for Level 3 PPAP must occur one week prior. Submissions will not occur without request.
 - If PPAP is requested, disposition response required within 5 days of submit date or it will be considered approved.
 - If no PPAP is requested by May 15th 2024, the PPAP will be considered approved.
- Adding capacity in Assy Line A33482H, currently making 2X2 BLD, for 2x3 BLD. Transfer Assy Line A033472E & A33482G. Part number impact: series 33472 (female), 33482 (male).
- In accordance with the requirements established by the certifying bodies, the Guadalajara2 facilities have IATF 16949:2016, ISO14001:2015, ISO45001:2018.
- In addition to the new manufacturing facility, we will be working with a third-party logistics provider in Guadalajara. Please discuss logistics options for receiving product with your sales contacts.

1

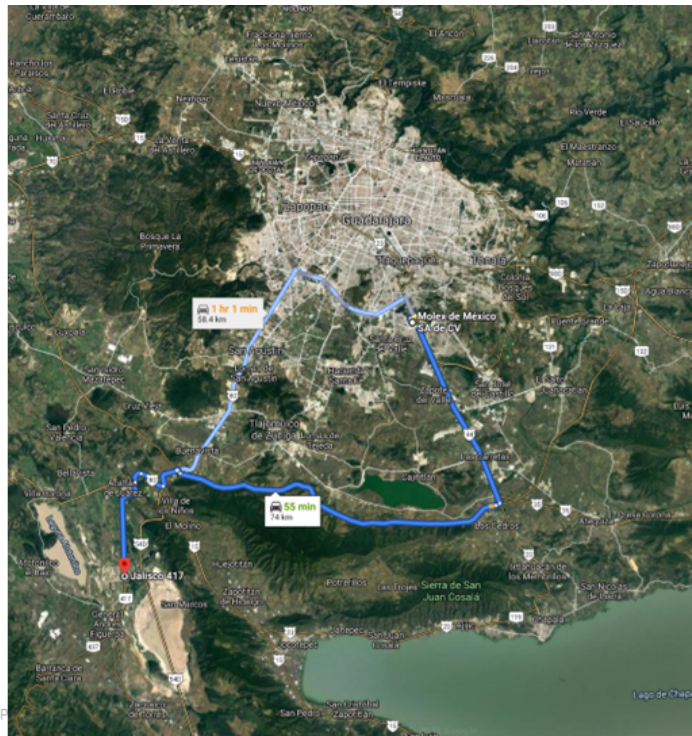
Molex Confidential Information
© Molex, LLC – All Rights Reserved. Unauthorized Reproduction/Distribution is Prohibited.



After Picture

Guadalajara 2

- Located in Centro Logistico Jalisco Industrial Park
- 1 hour from existing Quad1
- Initial build will contain Molding, Assembly, and Reliability Testing capabilities
- A new Distribution Center services Quad2



2

Molex /Ford Confidential
© Molex, LLC – All Rights Reserved. Unauthorized Reproduction/Distribution is Prohibited

RELEASED

You may address inquiries regarding this PCN by clicking on the below link
mailto:pcn_coordinator@molex.com?subject=PCN_Notification:514415
 or contact your Local Sales Engineer.

Note: While responding, please retain " PCN Notification : **PCN Notification: 514415** " in the e-mail Subject line for faster response.

Molex, LLC
 2222 Wellington Court
 Lisle, IL 60532
 TEL (800) 786-6539
www.molex.com