



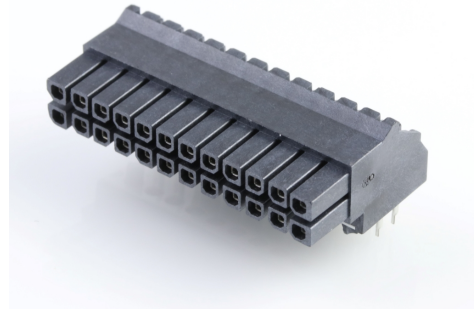
**Part Number :** [447642401](#)

**Product Description :** Micro-Fit BMI Receptacle Header, Dual Row, Right-Angle, with Press-fit Plastic Pegs, 2.54µm Tin (Sn), 24 Circuits

**Series Number :** 44764

**Status :** Active

**Product Category :** PCB Headers and Receptacles



---

## Documents & Resources

### Drawings

[Drawing 447642401\\_sd.pdf](#)

[Packaging Design Drawing PK-44764-001-001.pdf](#)

### 3D Models and Design Files

[3D Model 447642401\\_stp.zip](#)

[Symbol Footprint Data SYM-44764-2401-001.zip](#)

### Specifications

[Product Specification PS-44300-001-001.pdf](#)

[Test Summary 443000002-TS-000.pdf](#)

[Test Summary TS-44764-001-001.pdf](#)

---

## Product Environment Compliance

### Compliance

GADSL/IMDS	Not Relevant
China RoHS	
EU ELV	Not Relevant
Low-Halogen Status	Low-Halogen per IEC 61249-2-21
REACH SVHC	Not Contained per D(2022)9120-DC (17 Jan 2023)
EU RoHS	Compliant per EU 2015/863

### [Multiple Part Product Compliance Statements](#)

- Eu RoHS
- REACH SVHC
- Low-Halogen

## Multiple Part Industry Compliance Documents

- IPC 1752A Class C
- IPC 1752A Class D
- Molex Product Compliance Declaration
- IEC-62474
- chemSHERPA (xml)

## EU RoHS Certificate of Compliance

---

### Part Details

#### General

Status	Active
Category	PCB Headers and Receptacles
Series	44764
Description	Micro-Fit BMI Receptacle Header, Dual Row, Right-Angle, with Press-fit Plastic Pegs, 2.54µm Tin (Sn), 24 Circuits
Application	Board-to-Board, Power, Wire-to-Board
Component Type	PCB Receptacle
Product Family	Micro-Fit Connector System
Product Name	Micro-Fit BMI
UPC	756054398760

#### Agency

CSA	LR19980
UL	E29179

#### Electrical

Current - Maximum per Contact	8.5A
Voltage - Maximum	600V

#### Physical

Circuits (Loaded)	24
Circuits (maximum)	24
Durability (mating cycles max)	30
Flammability	94V-0

Glow-Wire Capable	No
Material - Metal	Phosphor Bronze
Material - Plating Mating	Tin
Material - Plating Termination	Tin
Net Weight	6.666/g
Number of Rows	2
Orientation	Right Angle
Packaging Type	Tray
PCB Locator	Yes
PCB Retention	Yes
PCB Thickness - Recommended	1.60mm
Pitch - Mating Interface	3.00mm
Plating min - Mating	1.016µm
Plating min - Termination	1.016µm
Polarized to PCB	Yes
Temperature Range - Operating	-40° to +105°C
Termination Interface Style	Through Hole

### Solder Process Data

Max-Duration	5
Lead-Free Process Capability	WAVE
Max-Cycle	1
Max-Temp	260

---

### Mates With / Use With

#### Mates with Part(s)

Description	Part Number
Micro-Fit BMI Dual Row Plug Housings	<u>44300</u>
Micro-Fit BMI Right-Angle Dual Row Headers	<u>44428</u>
Micro-Fit BMI Vertical Dual Row Headers	<u>44432</u>

---

