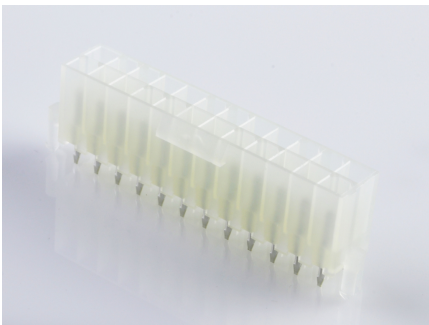




**Part Number :** [442060007](#)  
**Product Description :** Mini-Fit Jr. Header, Dual Row, Vertical, with 11.90mm Locking Ramp, 24 Circuits, with Peg 2 Snap-in Plastic Peg  
**Series Number :** 44206  
**Status :** Active  
**Product Category :** PCB Headers and Receptacles



## Documents & Resources


**Drawings**  
[Drawing 442060007\\_sd.pdf](#)  
[Packaging Design Drawing PK-44206-001-001.pdf](#)

**3D Models and Design Files**  
[3D Model 442060007\\_stp.zip](#)

**Specifications**  
[Test Summary TS-5566-002-001.pdf](#)

## Product Environment Compliance

### Compliance

GADSL/IMDS	Not Relevant
China RoHS	
EU ELV	Not Relevant
Low-Halogen Status	Low-Halogen per IEC 61249-2-21
REACH SVHC	Not Contained per D(2023)3788-DC (14 Jun 2023)
EU RoHS	Compliant per EU 2015/863

Multiple Part Product Compliance Statements  
- Eu RoHS  
- REACH SVHC  
- Low-Halogen

Multiple Part Industry Compliance Documents  
- IPC 1752A Class C  
- IPC 1752A Class D

- Molex Product Compliance Declaration
- IEC-62474
- chemSHERPA (xml)

## EU RoHS Certificate of Compliance

---

### Part Details

#### General

Status	Active
Category	PCB Headers and Receptacles
Series	44206
Description	Mini-Fit Jr. Header, Dual Row, Vertical, with 11.90mm Locking Ramp, 24 Circuits, with Peg 2 Snap-in Plastic Peg
Application	Power, Wire-to-Board
Comments	Current = 13A max. per circuit when header is mated to a receptacle loaded with 45750 Mini-Fit Plus HCS Crimp Terminal Crimped to 16 AWG wire. See Molex product specification PS-45750-001 for additional current de-rating information.
Component Type	PCB Header
Product Family	Mini-Fit Family Power Connectors
Product Name	Mini-Fit Jr.
UPC	822348185627

#### Agency

UL	E29179
----	--------

#### Electrical

Current - Maximum per Contact	13.0A
Voltage - Maximum	600V

#### Physical

Breakaway	No
Circuits (Loaded)	24
Circuits (maximum)	24

Color - Resin	Natural
Durability (mating cycles max)	30
First Mate / Last Break	No
Flammability	94V-2
Glow-Wire Capable	No
Guide to Mating Part	Yes
Keying to Mating Part	Yes
Lock to Mating Part	Yes
Material - Metal	Brass
Material - Plating Mating	Tin
Material - Plating Termination	Tin
Material - Resin	Nylon
Net Weight	4.888/g
Number of Rows	2
Orientation	Vertical
Packaging Type	Tray
PC Tail Length	3.30mm
PCB Locator	Yes
PCB Retention	Yes
PCB Thickness - Recommended	1.80mm
Pitch - Mating Interface	4.20mm
Plating min - Mating	0.889µm
Plating min - Termination	0.889µm
Polarized to PCB	Yes
Shrouded	Fully
Stackable	No
Temperature Range - Operating	-40° to +105°C
Termination Interface Style	Through Hole

---

## Mates With / Use With

### Mates with Part(s)

Description	Part Number
Mini-Fit Jr. Receptacle Housings	<u>5557</u>

---

---

This document was generated on Nov 06, 2023