

## INTRODUCTION

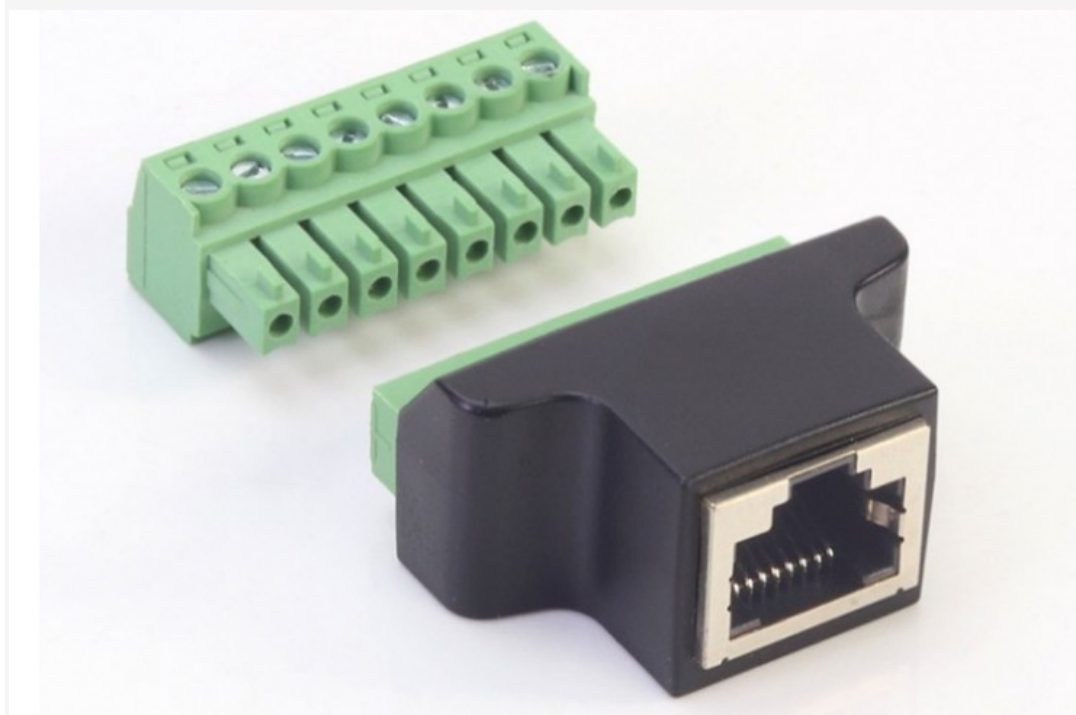
This Ethernet RJ45 Male Plug to 8-Pin Terminal Block consists of a standard RJ45 Ethernet port and a terminal block, which can be used without soldering.



There are metal shielding layers on the RJ45 port for fixing interface and preventing external electromagnetic interference, which assures good network signal.



The terminal block adopts a detachable installation design, and the integrally formed terminal block has a built-in groove mode deck, not easy to loose and fall out when tightly plugged



## FEATURES

- Detachable Installation Design
- With Metal Shielding Layers

## SPECIFICATION

- Color: Black
- Interface: RJ45 eight-core interface
- Material: PVC eco-friendly shell
- Function: Prolong network signal
- Dimension: 52\*36mm/2.05\*1.42"
- Connection Sequence: RJ45 port: 1-2-3-4-5-6-7-8
- Wiring terminal: 3-4-5-2-1-6-7-8

## SHIPPING LIST

- Ethernet RJ45 Male Plug Terminal Block x1