

# MAXVIEW



## COMBO/51 Roam Combo X

### Installation & User Instructions

This manual provides information on how to control the Roam Combo X Router using your devices internet browser. Most of these functions can be completed easier and faster using the Maxview Roam Combo X App. See the Roam Combo App instruction manual for more information.

#### UK contact:

Helpline: +44 (0)1553 811000  
Email: [support@maxview.co.uk](mailto:support@maxview.co.uk)  
Web: [www.maxview.co.uk](http://www.maxview.co.uk)

#### Maxview Address:

Maxview Ltd, Garage Lane, Setchey, King's Lynn, Norfolk. PE33 0AT. UK

Maxview reserve the right to change specifications without prior notice  
9111458 Iss 1

Roam Combo X Powered by



We have partnered up with one of the largest suppliers of Wi-Fi products worldwide.

# Introduction

Thank you for purchasing this product, should you have any difficulty using your Roam Combo X Combo Combo please contact our friendly Customer Helpline on +44 (0)1553 811000 or email [support@maxview.co.uk](mailto:support@maxview.co.uk).

## Contents

- 2. Record your Purchase
- 3. Product Contents
- 3. Tools Required
- 3. Choosing a Service Provider
- 4. Accessories

### Installation Instructions

- 5. Antenna Installation
- 8. Signal Booster Installation
- 12. Inserting Sim Card
- 13. Router Installation

### Router - Getting Connected and Basic Functions

- 16. Get to know your Router
- 17. Getting Online
- 19. Factory Reset

### Router - Advanced Functions and Changing Router Settings

- 21. Connecting to the Web User Interface
- 23. Logging out of the Web User Interface

### Router - Changing the Primary Internet Source from 3G/4G to Wi-Fi

- 25. Changing the Primary Source
- 28. Changing the Routers LAN IP Address

### Router - Other Functions

- 30. Managing and Removing Wi-Fi Connections
- 30. Changing Wi-Fi SSID (name) and Password
- 32. Entering SIM PIN
- 33. Controlling Data Usage & Other Functions
- 34. Router Firmware Update

### Additional Information

- 35. General Safety Warnings
- 35. Terms and Conditions
- 35. Maintenance
- 36. 2 Year Guarantee
- 37. Troubleshooting & FAQ's - For Internet with Router
- 40. Troubleshooting & FAQ's - For TV with Signal Booster
- 42. Specifications
- 43. Certification and Environment

## Record your Purchase

Please fill in the details below once purchased. This information will be required in the unlikely event of a fault occurring with this system.

See page 16 to see where you can find this information.

SERIAL NUMBER

SSID

PASSWORD

# Product Contents

- A. Antenna Mounting Foot

B. Combo Antenna\* with 2 x 0.8m cables with SMA connectors and 1 x 5m coaxial cable

C. Roof Clamp

D. 'F' Connector

E. Fused Power Cable (For Signal Booster)

F. Fixing Screws

G. 1m F to Coaxial Flylead
- H. Signal Booster

I. 1.5m Ethernet Cable

J. 12V Vehicle Power Supply (for Router)

K. Router Bracket

L. 4G/5G Router

M. SIM Adaptor Pack

N. 2 x Internal Wi-Fi Antennas

O. Fixing Template

\*White or Grey Plastics



## Tools required

- Power Drill

- 2.5mm Drill Bit

- Pozidrive (No.2) Screwdriver

- Cross Head Screwdriver
- 25mm Hole Saw

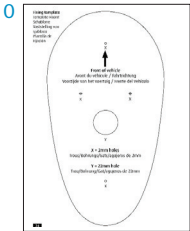
- 4mm Allen Key

- Side Cutters

- Hack Saw
- File/Emery Paper

- Surface Cleaner

- Knife



## Choosing a Service Provider



To use the Maxview Roam Combo X, you will need a suitable data SIM card (sold separately). The Maxview Roam Combo X -pis unlocked, so you can use any service provider. The best package will depend on many factors such as data usage, budget, location of travel and usage habits, however pre-paid data plans are usually more cost effective.

Accessories -  
Sold separately



Roam Combo Extension Cables

Extension cables can be purchased separately to allow a flexible mounting position to the router.

- 1 metre [MXL050/EXT1](#)
- 2 metres [MXL050/EXT2](#)
- 3 metres [MXL050/EXT3](#)



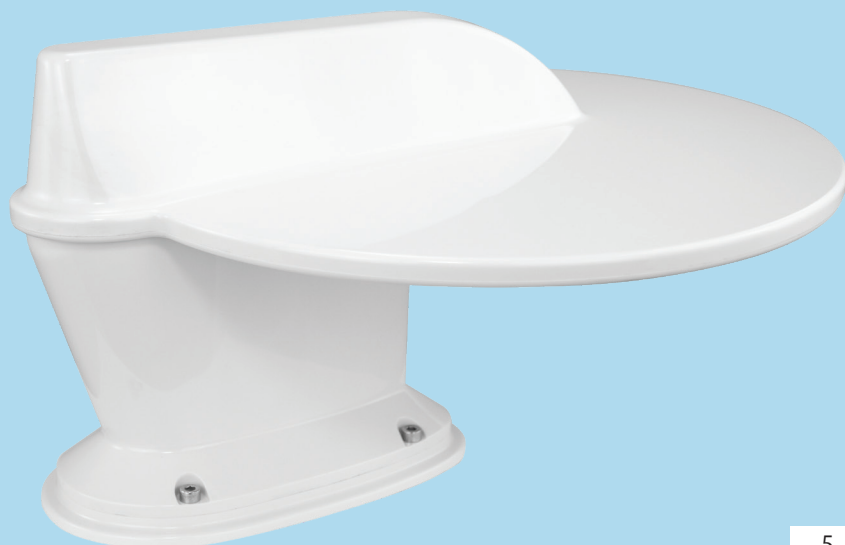
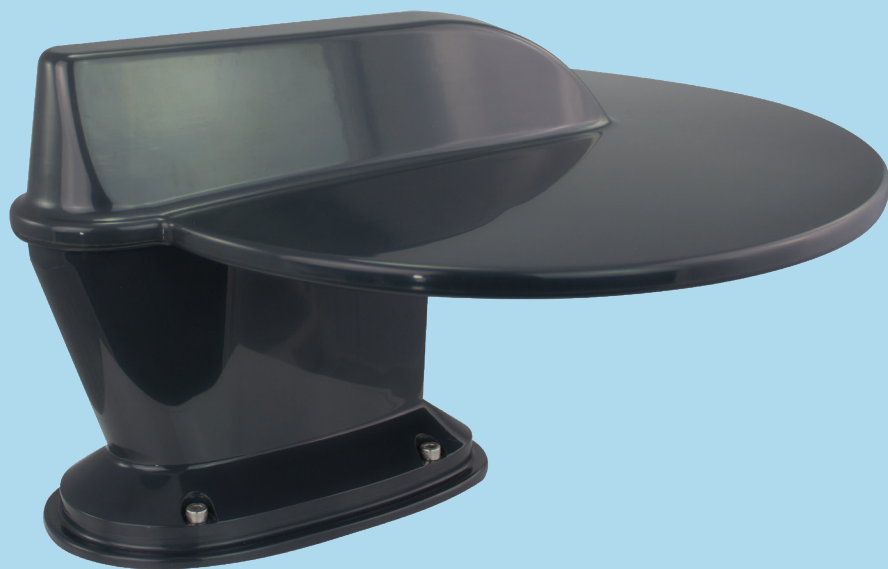
Roam Combo 230V PSU

230V ac to 12V dc Power Supply Unit to power a Roam Combo. For indoor use only.

[MXL051/PSUUK](#)

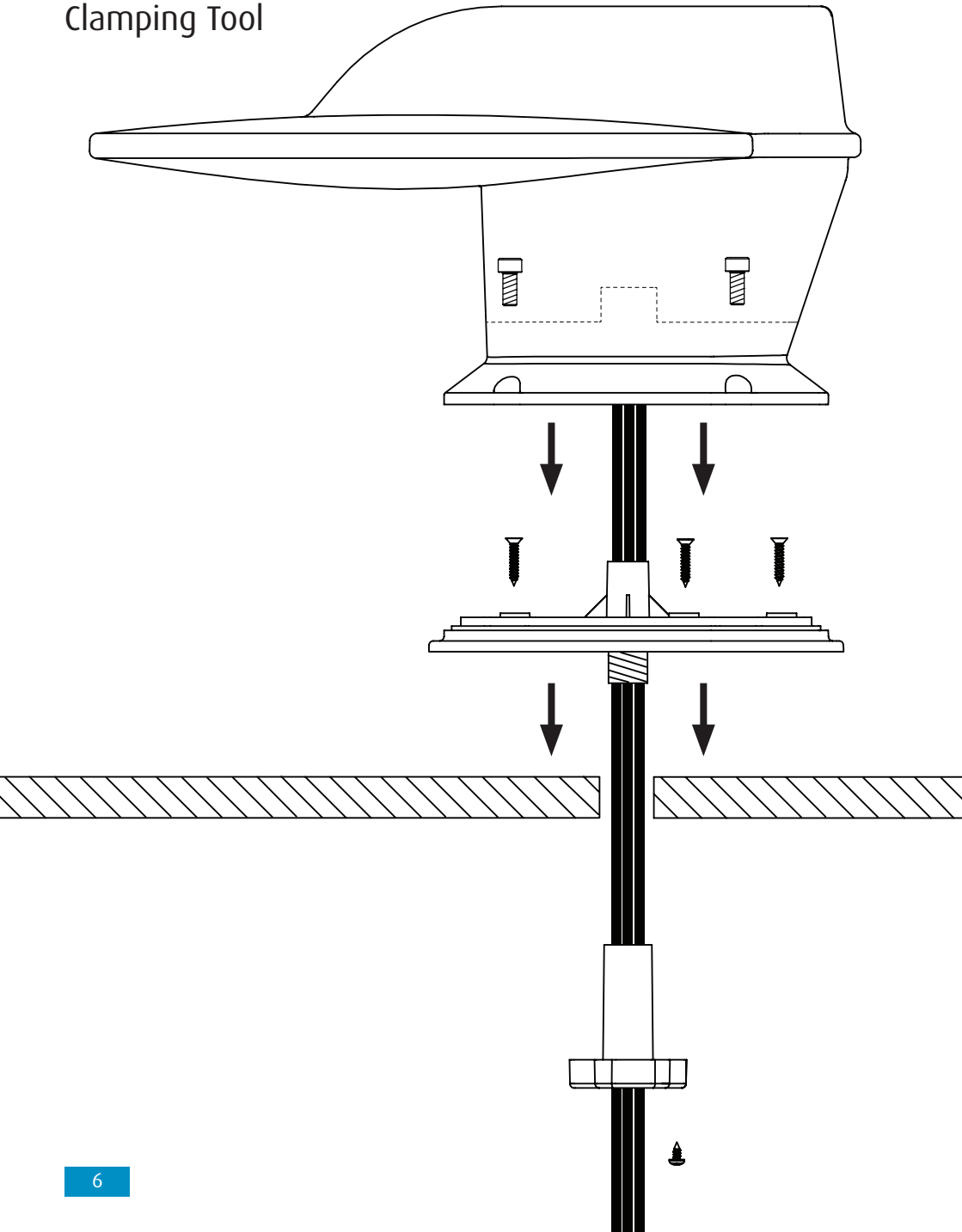


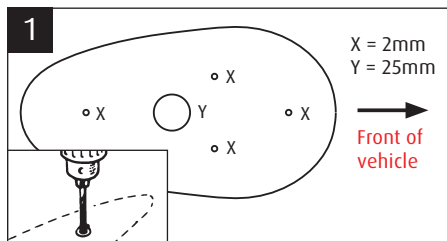
# Antenna Installation Instructions



Mounting Foot  
with wet seal and  
Clamping Tool

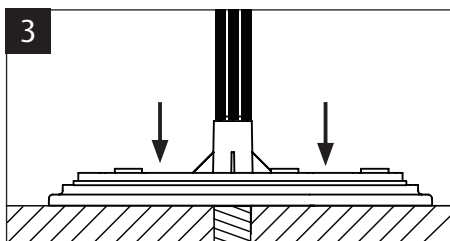
Towards front of vehicle →



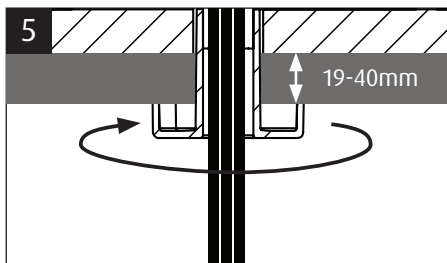


Choose a location, ensure the antenna is positioned on a flat surface and is clear from obstructions. Use the included template and drill 5 x 2mm holes.

Use hole position (Y) as a pilot hole to drill a larger 25mm hole. Clean up hole, ensuring the location of the Mounting Foot is clean and clear from debris and dirt.



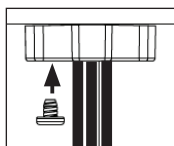
Position the Mounting Foot and press down firmly.



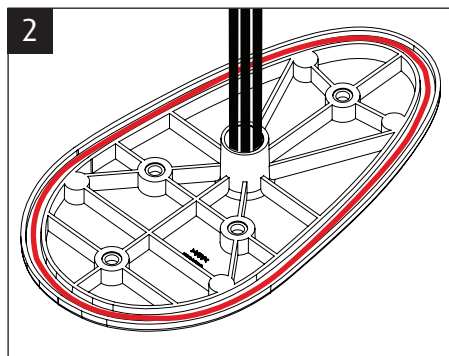
If your roof thickness is between 19-40mm, you can screw the Foot Clamp into the Mounting Foot underside to cover the hole inside the vehicle.

**Note:** The Clamping Tool can be cut down to suit your vehicle roof thickness.

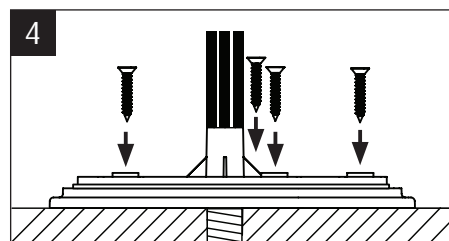
Turn anti-clockwise until tight and secure Foot Clamp with the Foot Clamp Screw.



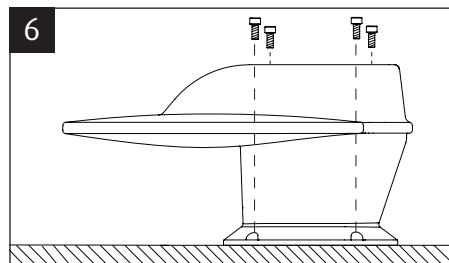
Installation of the Mounting Foot is now complete.



Apply sealant generously to the wet seal channel, ensuring the bead is consistent in size with no gaps.



**OPTIONAL** - For optimum secure mounting, use the 4 supplied Roof Fixing Screws, to secure the Mounting Foot to the vehicle roof.



## Installing the Antenna Head Unit

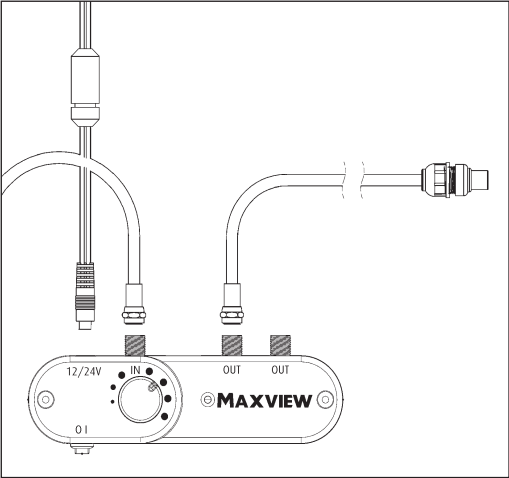
Place the Antenna Head Unit onto the Mounting Foot. Tighten the 4 Foot Mounting Bolts by hand with an Allen Key.

We recommend the use of a Torque Wrench set to 3.5Nm.

# Signal Booster (For TV) Installation Instructions



# Cable routing

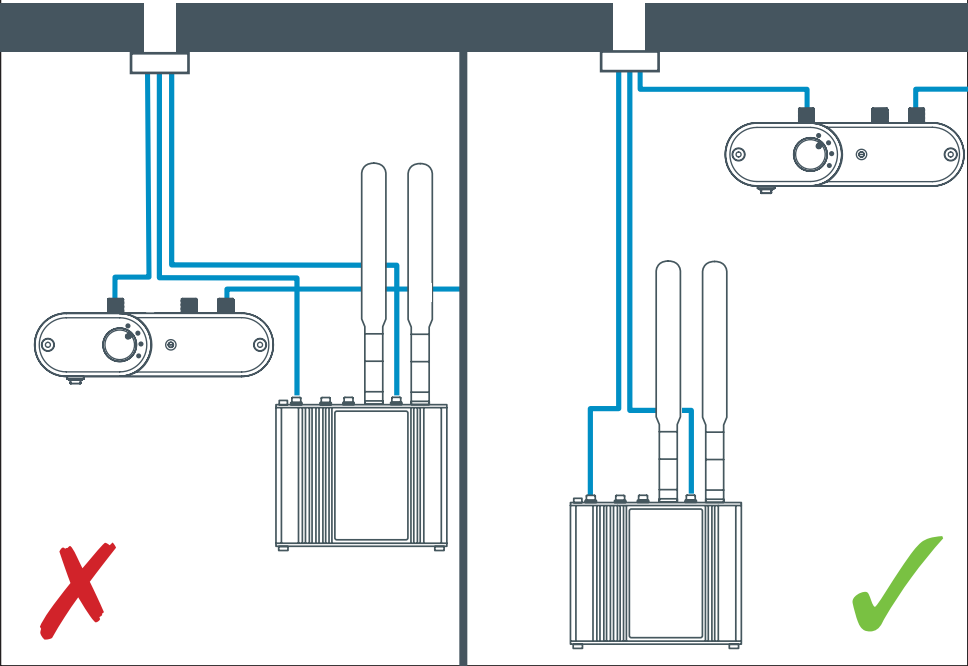


Route Coaxial Cable inside vehicle to Variable Signal Booster which should be located near your TV/ Receiver.

Note cable can be shortened to suit application.

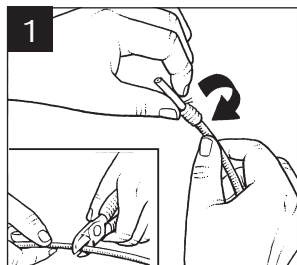


**Please Note:**  
When fitting the Signal Booster and Router, there should be as much distance between the two units as possible. The TV Coax cable and Router SMA cables should also not be routed next to each other wherever possible. This will reduce the potential for interference between the two systems.



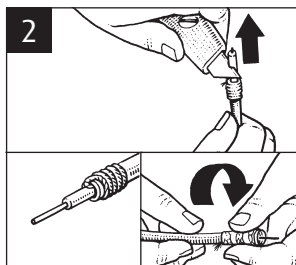
## Fitting F Connector

If you decide to shorten the cable please see below method of preparing cable.

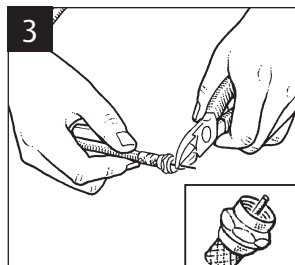


Cut cable to required length. Strip away 12mm of outer insulation.

Gather strands of screening braid, twist together and wind back around outer insulation. Cut foil to be flush with outer insulation.

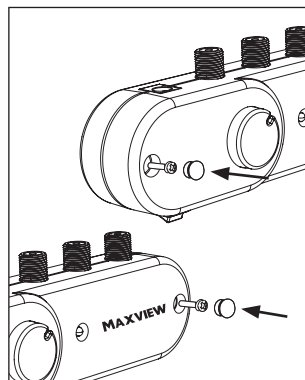
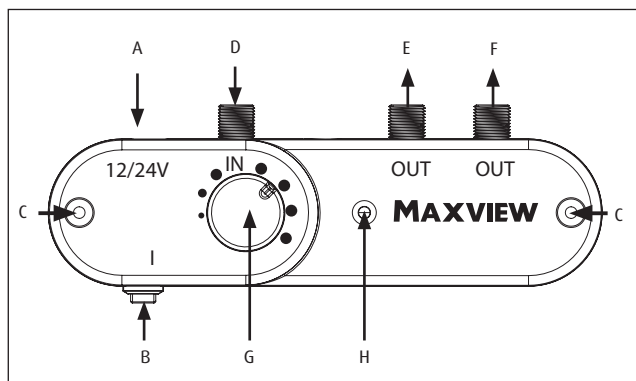


Strip away 10mm of inner insulation around the inner wire. Check none of the screening braid is touching the inner copper wire.



Cut off inner copper wire to extend 3mm beyond plug body.

## Using Signal Booster



### Connections & features

- |                        |                  |                      |
|------------------------|------------------|----------------------|
| A. 12/24V power input  | D. Antenna input | G. Gain control knob |
| B. On/off power switch | E. TV output 1   | H. Power indicator   |
| C. Wall fixing hole    | F. TV output 2   |                      |

### Operation

- Slide power switch to the right. The LED indicator should now be on.
- Turn the gain control knob clockwise to increase signal strength.

### Power source methods

- 12/24V DC (Fused Power Cable included for 12/24V wiring)
- 12/24V DC PSU Output (230V PSU)

### Mounting Option

Can be mounted to vehicle shelving or side panels using the 2 screws provided.

### Note:

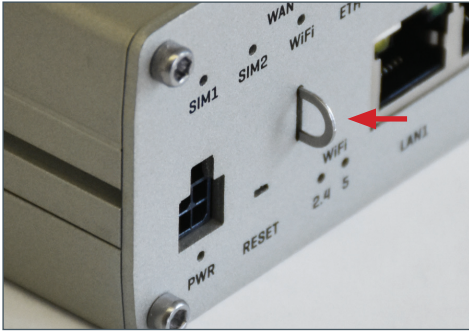
Before drilling always check for hidden electrical wires or plumbing.

# Router (For Internet)

## Installation Instructions

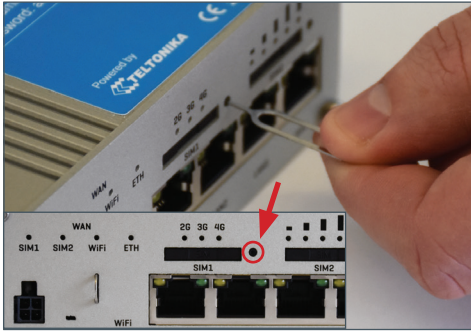


# Inserting Sim Card

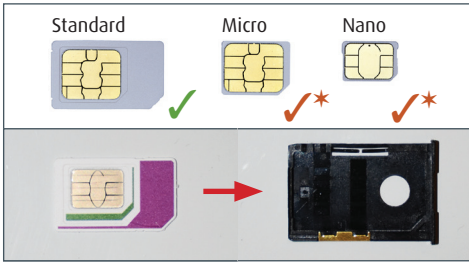


1. Remove the supplied Pin located at the bottom of the router.

**Please note** your Pin maybe located in the included SIM Card Adaptor Pack instead.

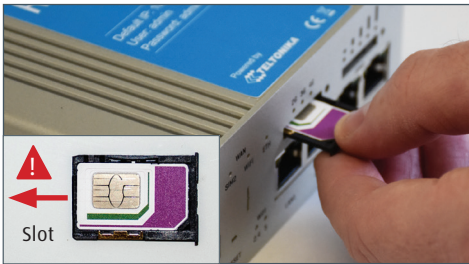


2. Use this pin to firmly press on SIM eject button. This is located next to the SIM slot. It is not necessary to apply force to the SIM tray itself. This may damage the router.



3. Remove the SIM tray and lay the standard size SIM card flat with the metal chip face facing up. Ensure it is in the correct orientation and sitting completely flat in the holder.

★ You can convert a Micro or Nano SIM Card to the standard size using the SIM Card Adaptor Kit included.

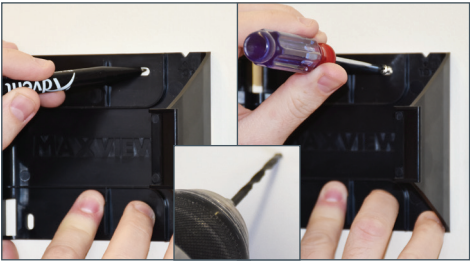


4. Insert the SIM tray back into the router. The metal chip should still be facing upwards and the SIM text on the front of the tray should be the correct way up. The tray should push into the slot without resistance, until it is fully inserted.


The SIM is now inserted.

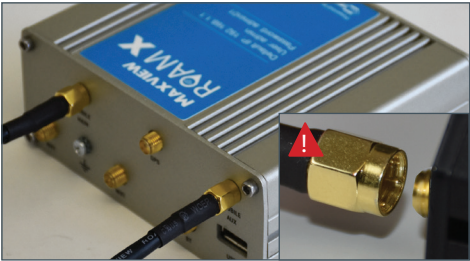


# Router Installation




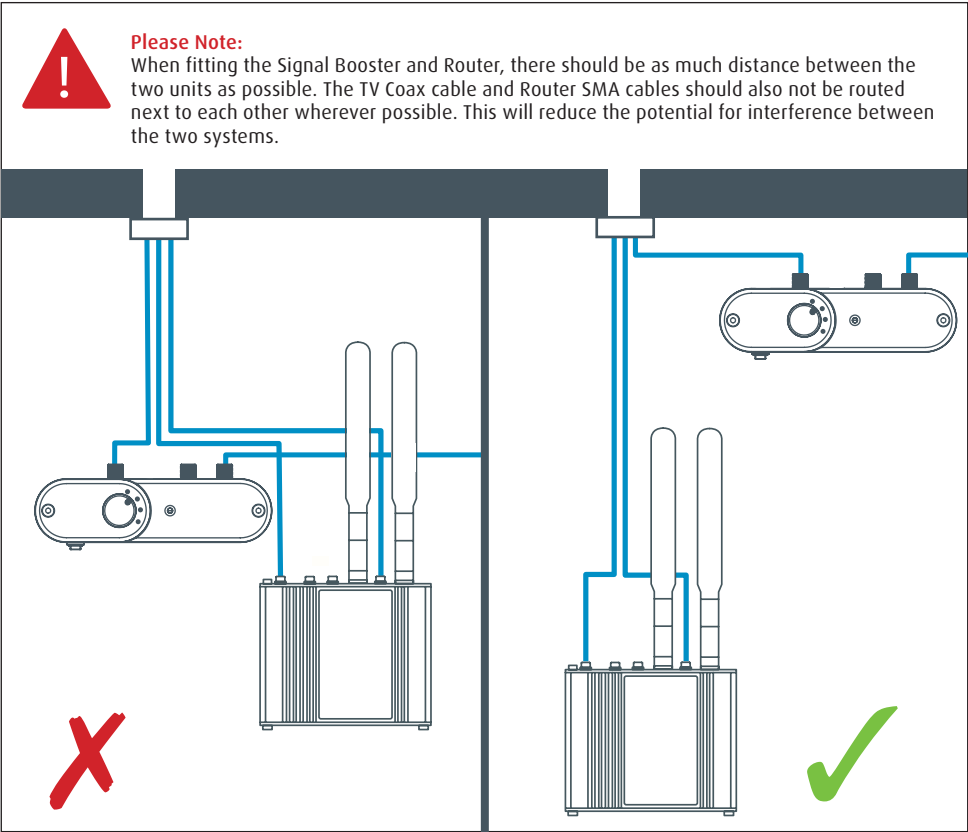
1. Position router bracket and mark hole positions. Depending on material, drill a pilot hole or use a bradawl. Mount the router mounting bracket to the surface using the 2 x No.6 Screws provided.

 **Note: Make sure the 'Maxview Logo' is horizontal and in the correct orientation.**



2. Attach the antenna coaxial cables to the top 2 connectors. These are marked 'mobile'. Note the order of the cables does not matter.

 **IMPORTANT - To prevent damage take care to ensure the centre pins are aligned before attaching the connector.**





3. Attach the Wi-Fi antennas to the bottom connectors. These are marked 'Wi-Fi'. These should be positioned so they are vertical.

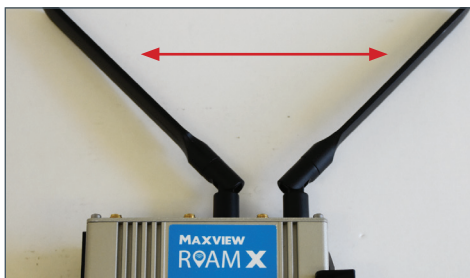


4. Connect the 12V power lead or the 230V PSU (available to order separately) and route the lead to your power source.



5. Place the router into the mounting bracket. The router can be removed from the bracket at any time to change the SIM card as required.

6. The installation is now complete. You may wish to tidy up cable routing to suit your installation.



The optimum positioning for the WiFi antennas on the Roam Combo X Router is pointing directly upwards. However, the unit can be fitted with the antenna at a 45° or 90° angle, or pointing downwards or forwards.

This may have a small detrimental effect on the signal strength, which will become more significant at greater distances from the router. However, for leisure vehicle applications, this will likely only cause a negligible drop in performance.

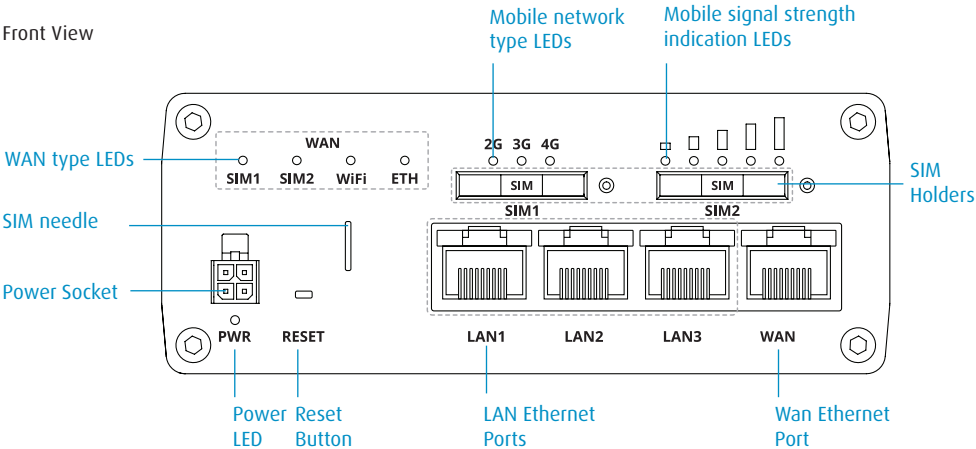
# Router (For Internet)

Getting  
Connected  
and Basic  
Functions

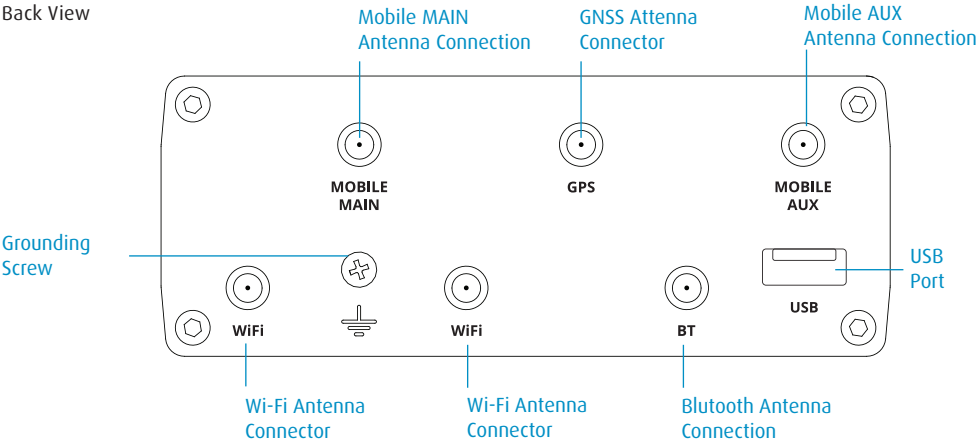


# Get to know your Router

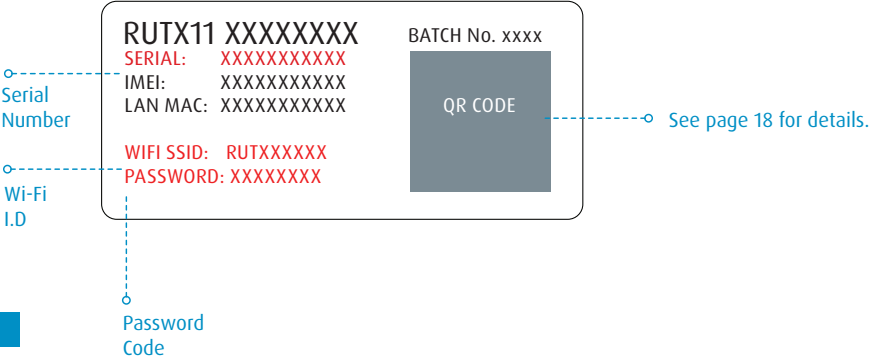
Front View



Back View



Credential Router Sticker (Located on the reverse of the router).



# Getting Online

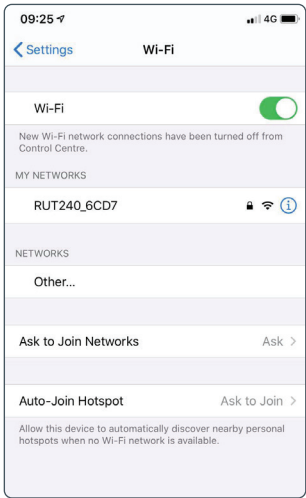
Now your Roam Combo X is installed and you have inserted the SIM card, it's time to get connected. To do this, you will need to be using a device which can connect to a Wi-Fi network such as a smart phone, Smart TV, tablet or laptop.

1. Turn on router and allow 2 to 3 minutes for the router to boot.

When ready, the router name will be visible in your devices Wi-Fi settings. There are 2 methods of connecting your device to the routers Wi-Fi network.

- Option A – Using device settings
- Option B – Using QR Code

## Option A: Device Settings



1. Navigate to your devices Wi-Fi settings and view available Wi-Fi networks.


2. The Roam Combo X Combo Router will be displayed as RUTX11\_XXXX. The last 4 characters will be unique to your Roam Combo X Router.

If more than one Roam Combo X is being used within close proximity, the Wi-Fi network name is displayed on the back of the router.

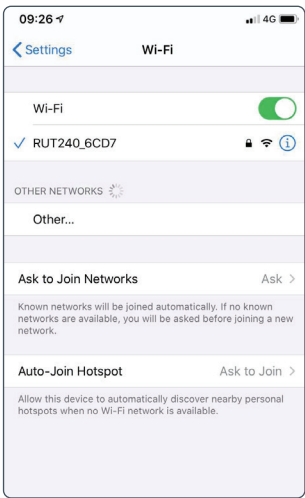
See page 16 for code.




3. Once you select this network, you must enter the password. This is also printed on the back of the router.

 **Note:** Password is case sensitive.

See page 16 for code.

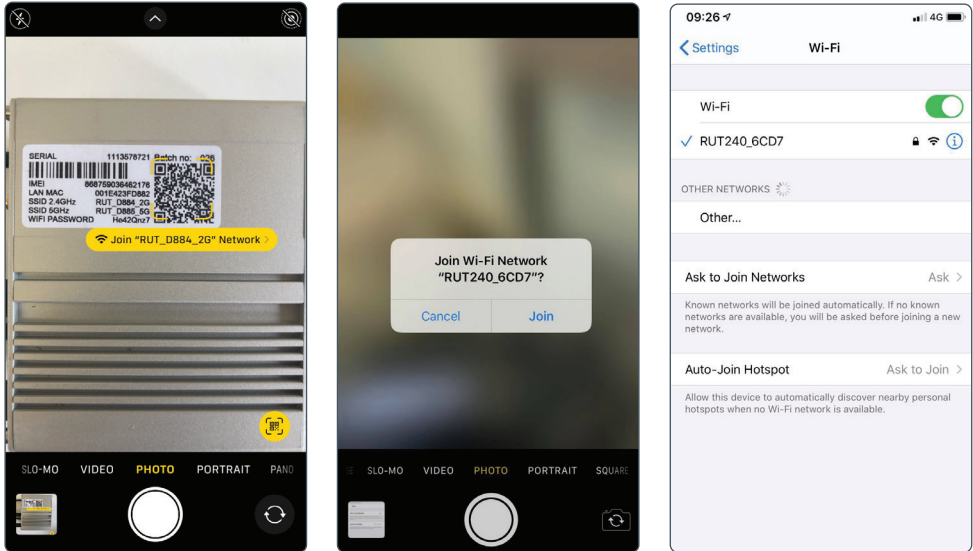


4. You are now connected and can begin using your Roam Combo X.

 **Note:** Two WiFi networks of the router are displayed. The 2.4GHz network is designed for range the 5GHz network is designed for data throughput.

## Option B: QR Code

1. If your device is able to read QR codes (Android 9 or newer and iOS 11 or newer), simply point your device camera at the QR code on the back of the router. When prompted, select 'join'. Your device will automatically connect to the Roam Combo X Router.



That's it! You are now connected to the secure Wi-Fi hotspot of your Roam Combo X Router.



The Wi-Fi network name and password will remain the same as those listed on the back of the router. The above processes can be repeated to connect up to 100 devices to the same network simultaneously.



Please note:

With the QR code on the back of the router, it is only possible to connect to the 2.4GHz network. To connect to the 5GHz network, you must enter the Wi-Fi password on the back of the router using the keypad of your device.

## Connecting to a device using an Ethernet Cable

If your device does not support Wi-Fi or you would like to maximise the reliability of your connection, you can access the Roam Combo X internet connection by connecting the Ethernet Cable between the LAN ports on the router and your device. Possible applications for this include some Smart TV's and desktop computers.

To do this, simply connect the Ethernet cable to the router and your device. If necessary, navigate to your devices LAN settings and follow the prompts.

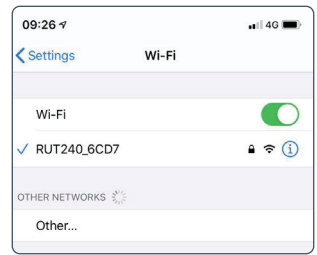
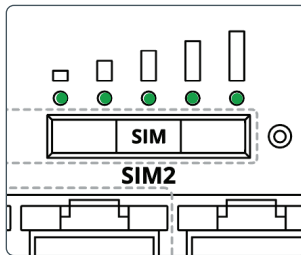


When the ethernet is in use other devices can still connect to the router using Wi-Fi.

## Factory Reset

At any time, the Roam Combo X Router can be reset to its factory settings using the reset button on the side of the router. This will restore all settings on the router, including:

- Router SSID (network name) and password to those listed on the back of the router.
- Web User Interface to the username and password listed on the front of the router.
- All custom settings will be deleted, including any Wi-Fi connections you may have added.



1. To complete the factory reset, press and hold down the reset button with the supplied pin needle.

2. Hold for 6 seconds, until all of the green LEDs on the side of the router are on.

Once released all 5 signal strength LED's will flash together.

This indicates the start of the reset process.

3. Allow 3 minutes for the router to reset. Once reset the Wi-Fi network will be visible and available to connect to.



Note: If you don't hold long enough, the router will restart but not reset.

# Router (For Internet)

## Advanced Functions and Changing Router Settings

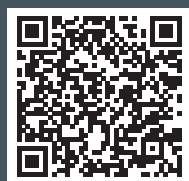
For most users changing these settings is not necessary. We only recommend accessing and changing settings in the Web User Interface if necessary and we do not recommend changing settings which have not been outlined in this booklet.



### Did you know?

The functions in this section can be completed easier and faster using the Roam Combo X App.

See the Roam Combo X App instruction manual for more information.





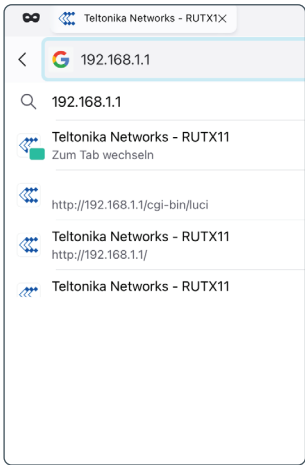
# Advanced Functions and Changing Router Settings

All of the settings and functionality of the Roam Combo X Router are changed using the Web User Interface. This can be accessed using a browser when your device is connected to the Roam Combo Wi-Fi network. The Roam Combo X Router is very powerful and there are many settings in here which can be adjusted to suit your requirements.

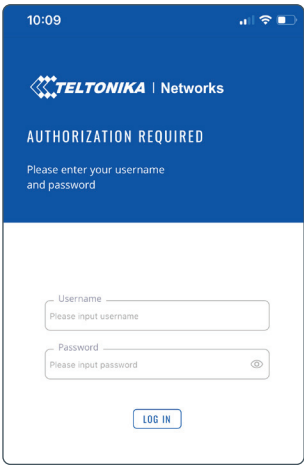
For most users, changing these settings is not necessary. We only recommend accessing and changing settings in the Web User Interface if necessary and we do not recommend changing settings which have not been outlined in this booklet.

## Connecting to the Web User Interface


 When using the Web UI, we recommend using the Google Chrome browser.

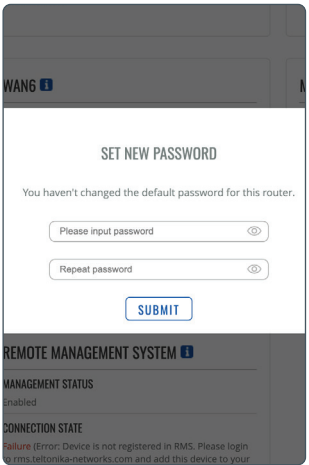


1. Whilst connected to the router, browse to **192.168.1.1** in your web browser. This can be done on any device with an internet browser and a connection to the Roam Combo X Combo Router.




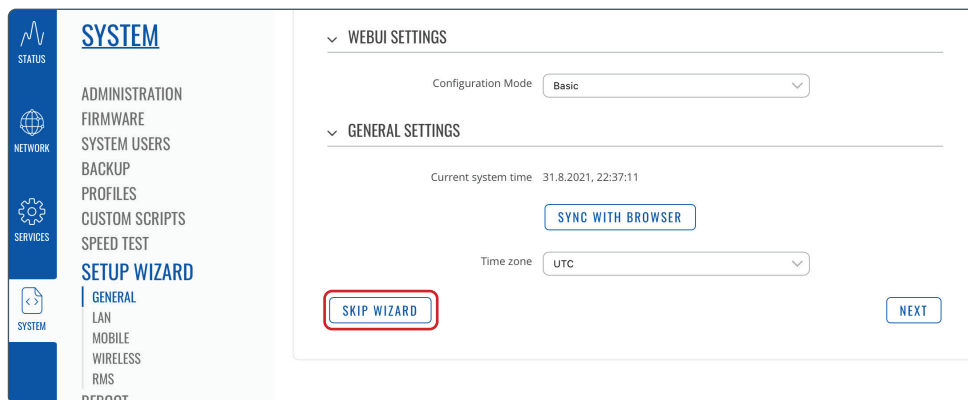
2. You will first be prompted to enter the Web User Interface user name and password. The default details are printed on the rear of the router.

 These are different to the Router Hotspot SSID and Password.



3. On first use, you will be required to update the password. The new password must be a minimum of 8 characters and contain at least one upper case letter, one lower case letter and one number.

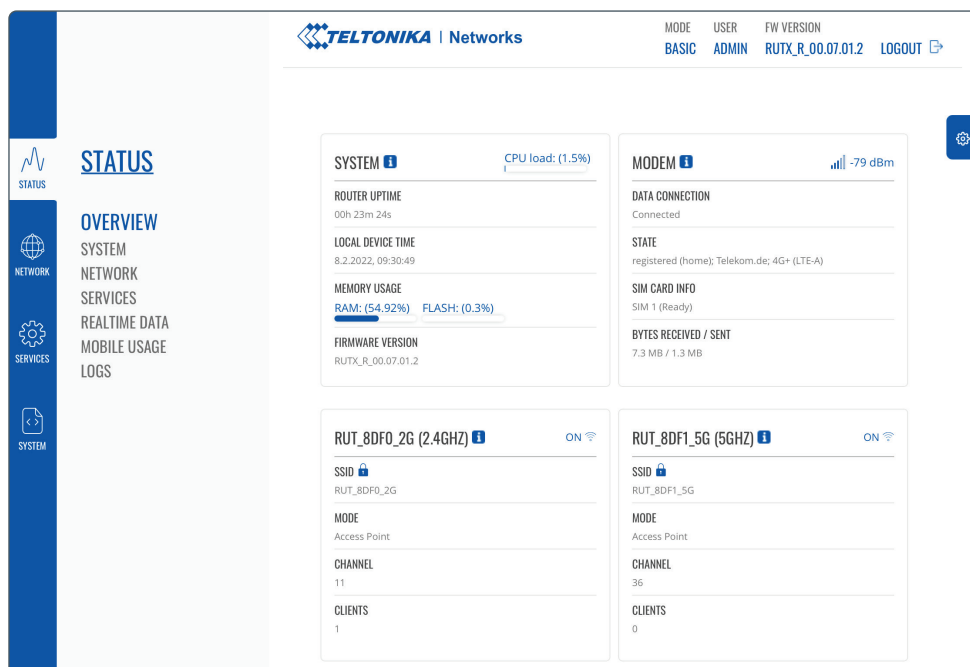
 After completing this change, the original credentials listed on the front of the router will no longer work. If you forget your password, you will need to complete a factory reset to reset to the original credentials.



4. When accessing the Web User Interface for the first time, you will be offered the chance to use the Set Up Wizard. This can be used to set up the router's most relevant parameters, such as changing the hotspot username and password.



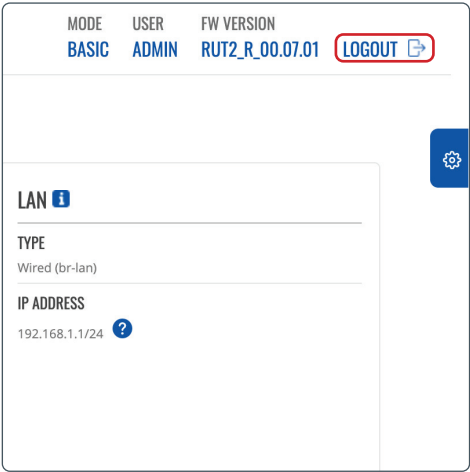
Competent users can navigate through other settings, however we recommend skipping the Set Up Wizard as it is not strictly necessary to change any of these settings. For most users we recommend skipping the installation by selecting '**Skip Wizard**'.



5. You will now have access to the router's dashboard. This page displays useful data such as mobile, system and wireless data. Unless necessary, we do not recommend changing any of the dashboard settings.

# Logging out of the Web User Interface

Once you have finished using the Web User Interface, you should log out. We recommend doing this every time you have finished using the Web User Interface.



1. Select 'Log Out' in the top right hand corner and confirm you wish to log out.



2. Once you have logged out you can now close the web browser tab and continue to use the Roam Combo X.

# Router (For Internet)

Changing the  
Primary Internet  
Source from 3G/4G  
to Wi-Fi



## Did you know?

The functions in this section can be completed easier and faster using the Maxview Roam Combo X App.

See the Roam Combo X App instruction manual for more information.



# Changing the Primary Internet Source from 3G/4G to Wi-Fi


In some instances during your travels, you will be in a location where there will be a usable Wi-Fi connection which can be used as a source, instead of 3G/4G. This means you can access the internet using the same Roam Combo X hotspot, however the source of the connection will be from another Wi-Fi hotspot.

To use an existing Wi-Fi hotspot, you will need to ensure:


- You know the password of the source Wi-Fi.
- The source Wi-Fi does not require access through a Captive Portal. See page 39 for more information on Captive Portals.

Using the web browser to set up this feature requires some set up time, however this only needs completing once as the Wi-Fi source details will remain in the router and the router will automatically switch to using this Wi-Fi source instead of 3G/4G when it is available. Because of the initial set up required, we recommend using this feature if you will be spending considerable time at this location or using significant amounts of data.


If you will only be at the site for a short period, we suggest you continue to use the 3G/4G connection or connect directly to the Wi-Fi connection with your Wi-Fi enabled device.





The speed and reliability of the Wi-Fi connection you receive will only be as good as the source it is connected to. We therefore recommend you confirm the network is suitable for your requirements before carrying out the set up process. This can be done using a separate device with Wi-Fi connectivity, such as a mobile phone, laptop or tablet.




It is easier and faster to switch between 3G/4G and Wi-Fi using the Maxview Roam Combo X App. See the Roam Combo X App instruction manual for more information.

  
STATUS

  
NETWORK

  
SERVICES

  
SYSTEM

MOBILE

LAN

WAN

WIRELESS

FAILOVER

FIREWALL

WIFI 2.4GHZ

RUT240_2FEE	Interface status:
MAXVIEW	Interface status:

1. From the Web User Interface Dashboard, select 'Network' at the top of the page. When the drop down menu appears, select 'Wireless' then click Scan under 'WIFI 2.4GHz' if you wish to have a standard Wi-Fi network. Or under 'WIFI 5GHz' if you wish to connect to a 5GHz WIFI network.



STATUS

NETWORK

SERVICES

MOBILE

LAN

WAN

WIRELESS

FAILOVER

FIREWALL

WIFI 2.4GHZ

RUT240_2FEE	Interface status:
MAXVIEW	Interface status:

5. Your router will now connect to your chosen wifi network. However the connection your router uses for to connect to the internet will depend on your WAN configuration setting,

STATUS

NETWORK

SERVICES

MOBILE

LAN

WAN

WIRELESS

FAILOVER

FIREWALL

NETWORK INTERFACES

1	MOB1S1A1	Status: Running Failover: Enabled Type: Mobile
2	WAN	Status: Stopped Failover: Disabled Type: Wired
3	MAXVIEW1	Status: Running Failover: Disabled Type: Wireless

6. To change connection priority drag and drop each connection in the order desired.

STATUS

NETWORK

SERVICES

MOBILE

LAN

WAN

WIRELESS

FAILOVER

FIREWALL

NETWORK INTERFACES

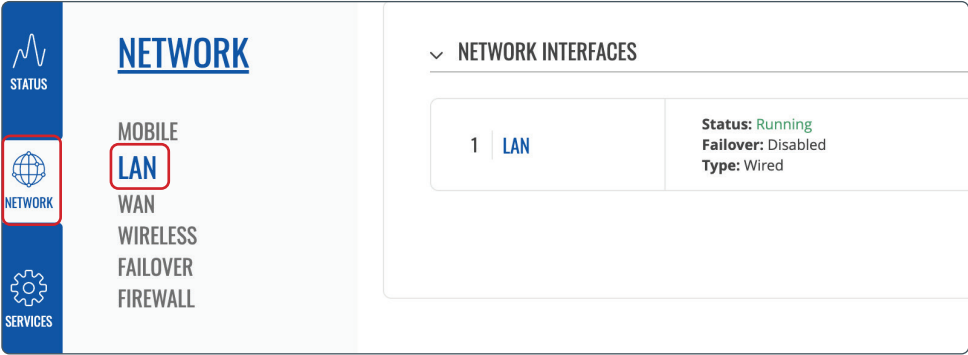
1	MAXVIEW1	Status: Running Failover: Disabled Type: Wireless
2	MOB1S1A1	Status: Running Failover: Enabled Type: Mobile
3	WAN	Status: Stopped Failover: Disabled Type: Wired

7. Then save and apply.

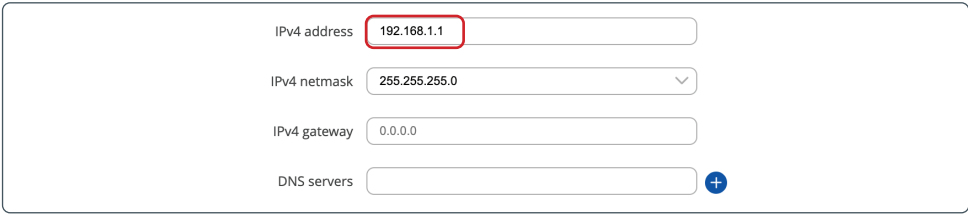
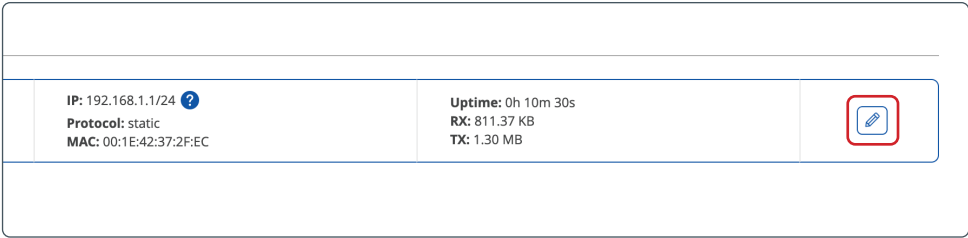
# Changing the Routers LAN IP Address

In some cases, the LAN IP Address of the Roam Combo X Router will be the same as the source Wi-Fi IP address. If this is the case, using Wi-Fi as the internet source will not work.

To fix this, we must change the LAN IP Address of the Roam Combo X Router. To do this, follow the steps below:



1. From the dashboard, select ‘Network’ and then ‘LAN’.



2. In the ‘IP Address’ box, change the IP address from 192.168.1.1 to 192.168.2.1.
3. It is not necessary to change any other settings. Select ‘save’ to add these settings and return to the dashboard.
4. After completing this change, the Roam Combo X Wi-Fi will reboot and you may temporarily loose connection to the Wi-Fi. Once restored, it should not be necessary to reconnect your devices.

Note: The LAN IP Address is used to access the Roam Combo X Router web user interface (WebUI). Therefore, by changing the LAN IP Address, this will also change the address which is typed into the web browser to access the router WebUI. Whatever address is used for the LAN IP address must be used.



# Router (For Internet)

## Other Functions



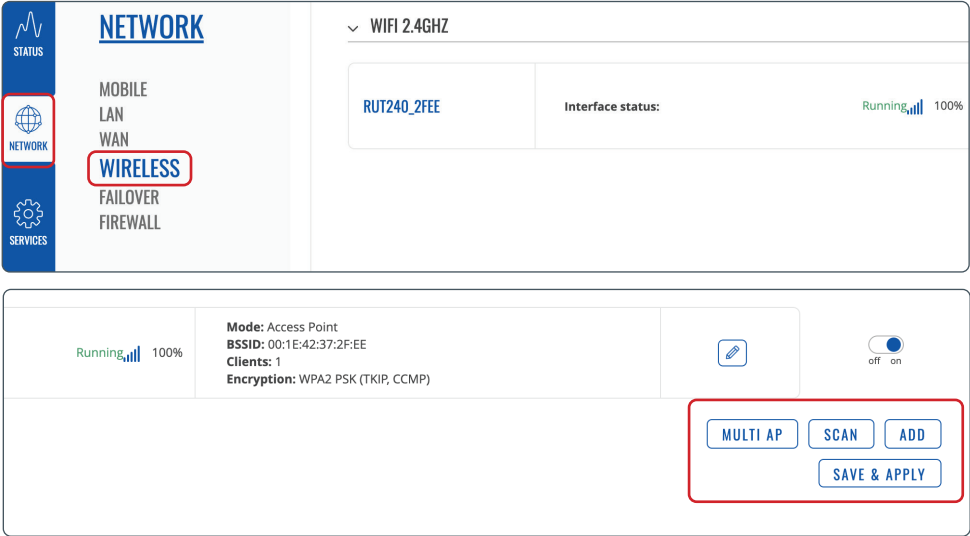
### Did you know?

The functions in this section can be completed easier and faster using the Maxview Roam Combo X App.

See the Roam Combo X App instruction manual for more information.



# Managing and Removing Wi-Fi Connections




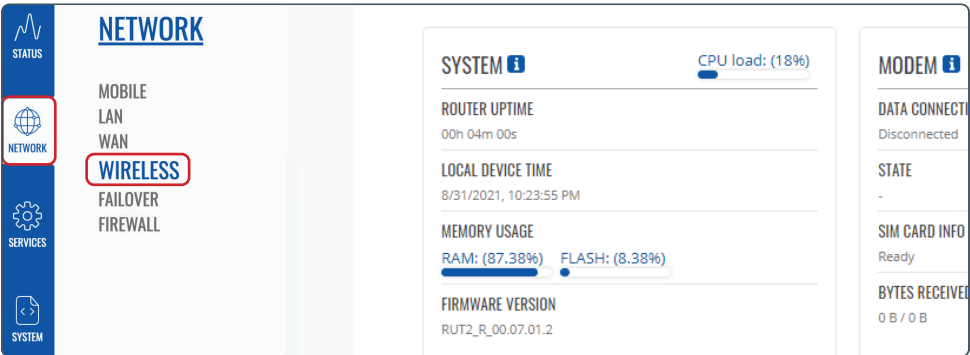
1. Navigate to 'Network' and then 'Wireless'. From here, you can then view and manage the most recent Wi-Fi connection listed under the Wireless Station Mode heading. This includes updating the password or removing it completely if it is no longer used.

 The Router will store the details of the most recently used Wi-Fi connection only. See page 21 to input a new connection to replace it.

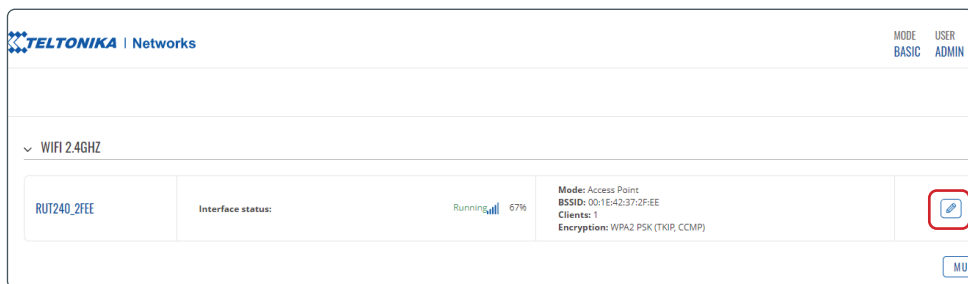
## Changing Wi-Fi SSID (name) and password

After completing this change, the original credentials listed on the back of the router will no longer work. If you forget your password, you will need to complete a factory reset to reset to the original credentials.

 Completing this change will remove all devices which are currently connected to the router hotspot. These will need to be reconnected using the new username and password.



1. From the Web User Interface dashboard, select 'Network' and then 'Wireless' from the top menu.



TELTONIKA | Networks

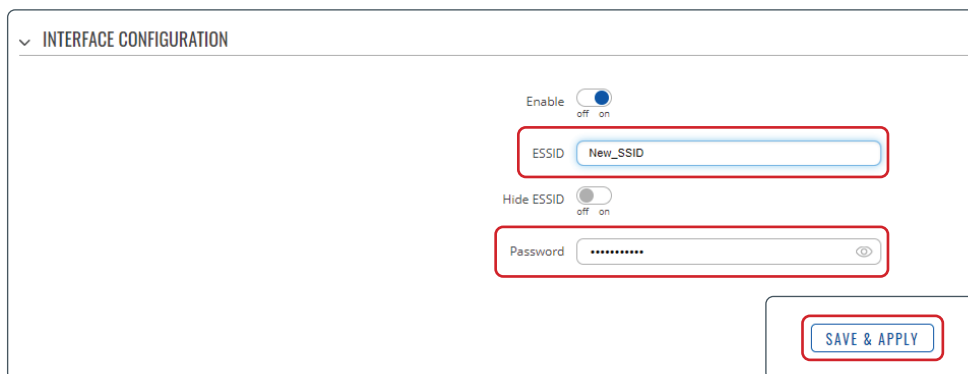
MODE BASIC USER ADMIN

WIFI 2.4GHZ

Interface	Status	Mode
RUT240_2FEE	Running 67%	Mode: Access Point ESSID: 00:1E:42:37:2F:EE Clients: 1 Encryption: WPA2 PSK (TKIP, CCMP)

MULTI

2. You will then see a list of the Wireless Access Points (hotspots) the router is creating. As standard, this will be for 2.4GHz and one for 5GHz. Select **'pencil icon'** on the RUTX11\_XXXX access point.



INTERFACE CONFIGURATION

Enable ☐ off ☒ on

ESSID

Hide ESSID ☐ off ☒ on

Password

SAVE & APPLY

3. You will now be transferred to the **'Interface Configuration'** tab under the **'General Set Up'** tab. In the ESSID box, input a new name (ESSID) for your router.

4. Click **'WIRELESS SECURITY'** and input new password in the **'Password'** box.

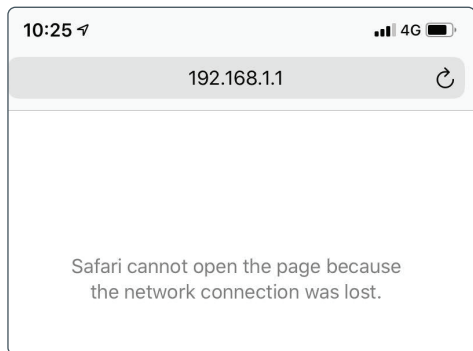
5. Once completed, select **'SAVE & APPLY'**.



It is important this is a strong password to ensure your hotspot remains secure.

We recommend using a combination of uppercase characters, lowercase characters, numbers and symbols. You should also avoid common phrases such as 'password' and '12345'.

Keep your password safe as it will be required to connect devices to the new Wi-Fi network.



6. When the changes are complete, you will see a web browser error page and your device will no longer be connected to the router. Because the Wi-Fi network has changed, the router will automatically remove all devices, including the one you are currently with.

Your new hotspot name and password is now set up.

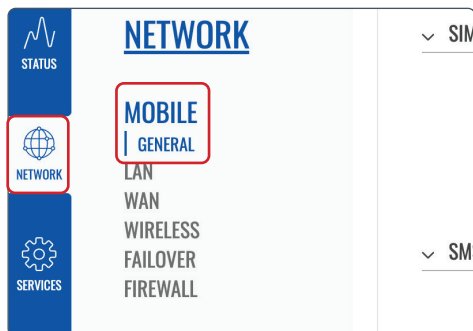
## Entering SIM PIN

For security, some SIM cards have a 4-8 digit PIN activated. If your SIM is PIN protected, you will need to input the PIN number into the Web User Interface before it can be used.

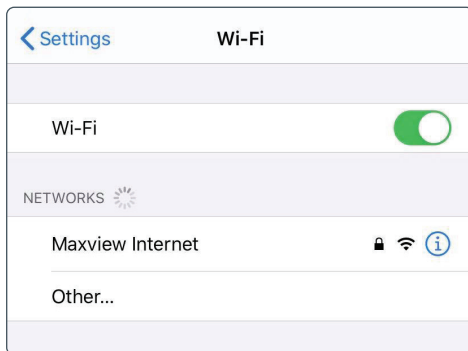
Please note, if you enter the incorrect PIN 3 times, your SIM card may be blocked. If this happens, you will need to contact your SIM card network provider.

If your SIM requires a PIN, the Web User Interface will display SIM (locked). If it does not require a PIN it will display SIM (ready).

To enter the PIN, follow the below steps.

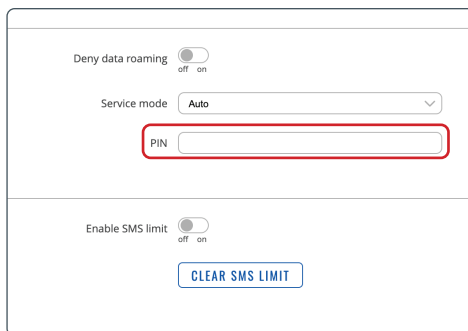
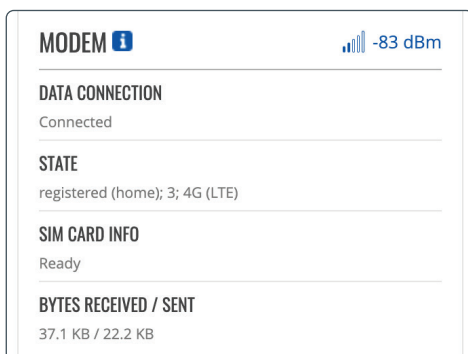


1. From the Web User Interface, select '**Network**' and then '**Mobile General**' from the top menu.



7. You can now navigate to your device's Wi-Fi settings and view available Wi-Fi networks. The Roam Combo router hotspot will be displayed as your chosen name. Select this network and enter the new password.

This step should be repeated for any device you wish



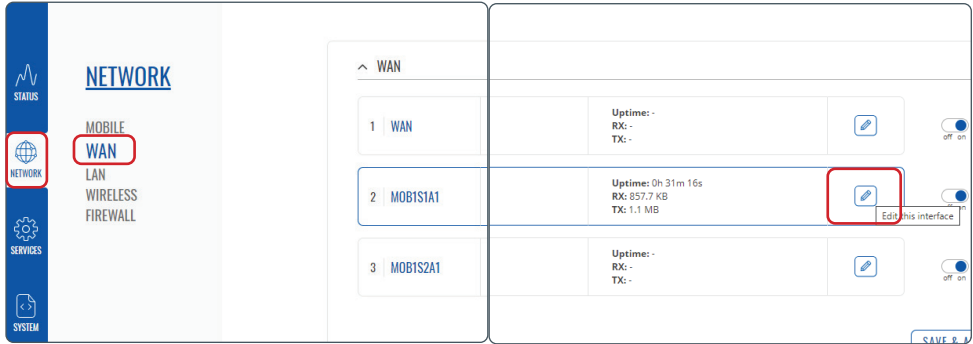
2. In the '**General**' tab, insert the PIN in '**PIN**' box. Once entered, select save.

## Controlling Data Usage

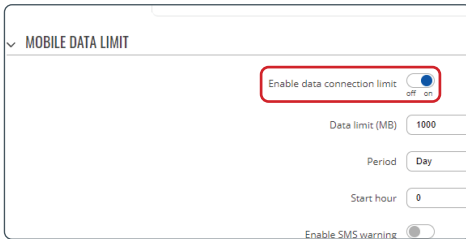
This function can be used to sync your SIM card's data allowance with the router. This configuration will not reset when the router is turned off so can be used to monitor usage and to understand when you are nearing your maximum allowance.

Warning:

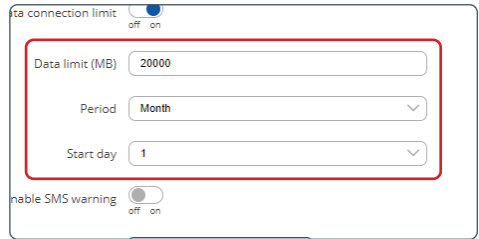
This should be used as a guide only. For exact usage and allowance usage, please contact your service provider.



1. From the Web User Interface, select '**Network**' and then '**WAN**' from the menu. Click the '**Edit**' button on the internet connection (i.e the pencil icon)



2. Under '**Mobile Data limit**' click on the enable data connection limit and turn **ON**.



3. Change the Data limit value to your desired setting (i.e 2000mb) and period and month. Then click '**Save & Apply**'.

4. SMS warning texts can also be set up in the same way, however this will send a warning text when you are nearing your allowance limit.

## Other Functions

The Roam Combo X Router offers a vast number of functions. These include features such as SMS remote control, accessing SMS messages and custom configuration. These features are advanced and should only be used by a competent user.

To bring you the Roam Combo X Router, we have partnered with Teltonika. Teltonika have a vast amount of information available for all function of the router and Web UI on their Wiki Support Site. This can be accessed at: <https://wiki.teltonika.lt/view/RUTX11>

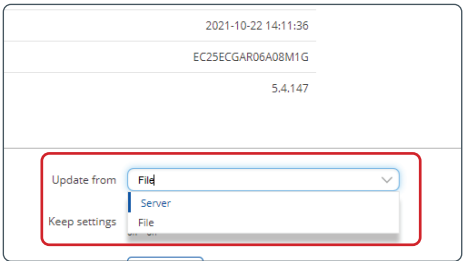
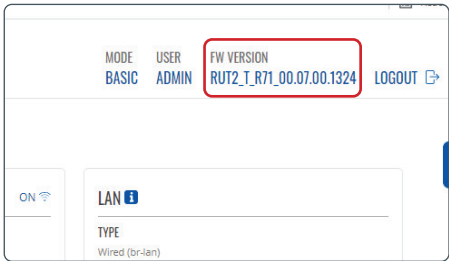
For more information on the function available and instructions on how to use this, please refer to the Teltonika Wiki Support Site.

# Router Firmware Update

From time to time, new firmware will be available to download onto the Router X. It is not essential that the latest firmware is on the router, however we recommend keeping firmware up to date to ensure you have access to new feature releases and the latest security updates.

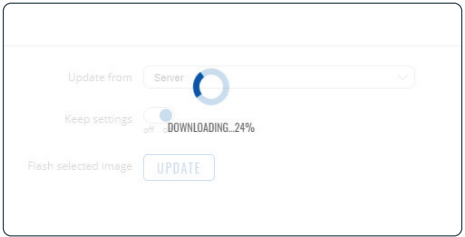
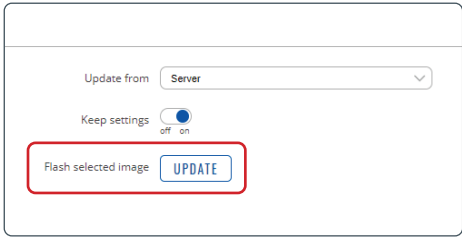
A list of the latest firmware changes and the associated features can be found at [https://wiki.teltonika-networks.com/view/RUTX11\\_Firmware\\_Downloads](https://wiki.teltonika-networks.com/view/RUTX11_Firmware_Downloads)

As long as the router has a reliable internet connection, the firmware update can be done from the Teltonika Web User Interface. The time it takes will depend on your connection speed, so we recommend using a fast connection to minimise the time required.



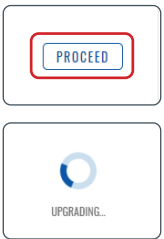
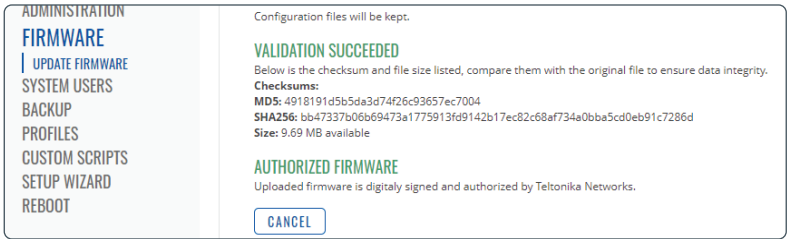
1. To find out if your software is up to date, click the 'FW Version' tab in the top right hand side of the dash board menu.

2. If a new version appears and is available click the update from 'server' from the drop down options.



3. Press 'UPDATE'.

4. The new firmware will now begin to download.



5. You will receive a validation message once the firmware downloads successfully. Next click the 'PROCEED' button and a upgrading message will then appear. Once upgrading is complete you will be taken back to the login window.

Your firmware update is now complete.

# Additional Information

## General Safety Warnings

Read these instructions carefully and become familiar with your Maxview product. Understand the application, limitations and any hazards involved with the installation and operation. Failure to follow all instructions may result in damage to your vehicle and/or serious injury. Maxview declines all responsibility in the event of incident or accident if they are due to a non observation of the installation instructions or the way the product is used. No modifications to the product are permissible.

### Installation

- Always consider the additional height the product you install adds to the vehicle
- Always follow manufacturer's operating instructions before using tools and equipment.
- Take care when working at heights. Keep work area clean and tidy to avoid trip hazards
- Use creeper boards where necessary to ensure roof construction can support your weight
- All electrical work should be carried out by a competent person

### Operation

- The maximum speed of vehicle with product mounted on roof is 81mph (130km/h)

### Servicing & Support

- Any inspection or repair must be carried out by Maxview or an appointed representative of the manufacturer
- No regular maintenance required on the product
- Do not dismantle product
- Do not use solvent or abrasive cleaning agents on the product
- Only use a suitable mild detergent to clean the product
- Do not pressure wash the product
- We recommend you check the mechanical integrity of a roof mounted product at least once a year
- If in the event that you do experience a problem with the product, call Maxview Customer Service +44 (0)1553 811000

---

## Maintenance

The Roam Combo has been designed to be maintenance and trouble free. For optimum signal strength, keep the cover clean from dirt, bugs, and other debris. Periodic washing of the top cover with mild soap and water is recommended.

1. Do not remove the cover of the antenna as it will void the limited guarantee.
2. Never power wash the antenna. Keep the enclosure clean from dirt, bugs, and other debris by hand washing with mild soap and water.

DO NOT USE SOLVENTS TO CLEAN THE Roam Combo. DO NOT DROP OR EXPOSE TO JARRING MOVEMENTS.

---

## Terms and conditions

In no event shall Maxview be liable for any indirect, incidental or consequential damages from the sale or use of the product. This disclaimer applies both during and after terms of the guarantee. This does not affect your statutory rights. The Roam X Combo antenna is designed for permanent installation and is not designed to be removed or serviced. Whether the Roam Combo is in warranty or not and whether the cause for removal is our fault or not, we are not responsible for the safe removal of the Roam Combo X antenna. Will not be held responsible or liable for any damage done to the Roam Combo or other property whilst removing the antenna, regardless of the reason for removal. By selling a Three™ SIM card we are acting completely independent of Three™ and any information you supply or any contract you enter in to is your own choice. We will not be held liable for any costs incurred as a result of using Three™ services. Three™ is a trading name of Hutchinson 3G UK Limited. Data usage can be expensive. Although the Roam X Combo does offer data warning and restriction warnings, this should be used as a guide only, it is not always completely accurate. For accurate data usage information, you should contact your service provider. We will not be liable for any costs incurred as a result of data usage using the Roam X Combo.

## 2 year guarantee

Every Maxview Roam X Combo Mobile 3G/4G Wi-Fi System is thoroughly inspected and tested before leaving the factory, and is covered by the following 2 year parts limited guarantee from the date of original purchase.

### Registering your product

As part of our commitment to our customers, we ask owners of our Roam X Combo 3G/4G Wi-Fi Systems to register ownership. By registering products with the Maxview service database, we will have a record of the product purchase that will allow us to provide our customers with faster and improved technical support, notifications of software updates as well as many other benefits. Additional benefits do not affect your statutory rights as a consumer. Each product you purchase needs to be registered with us individually.

### How do I register my product?

You need to register your product within 28 days of purchase. To register your Roam X Combo go to the Product Registration: [register.maxview.co.uk](https://register.maxview.co.uk)

You will need the model and serial number of your product, which can usually be behind the Router. This can also be found on your guarantee registration card. We recommend that you keep this instruction book and proof of purchase in a safe place. The instruction book is particularly useful to help you get the most from your product.

### Has my product been registered?

Once you have registered your product you will receive an email confirming your registration.

### How do I claim on my guarantee?

In the unlikely event that you have an issue with your product please contact our Customer Services Team on +44 (0) 1553 811000 or email [support@maxview.co.uk](mailto:support@maxview.co.uk). You will need to retain your proof of purchase as we will ask for this along with the model and serial number of your product.

In no event shall Maxview be liable for any indirect, incidental or consequential damages from the sale or use of the product. This disclaimer applies both during and after terms of the guarantee. This does not affect your statutory rights.

Due to expanding and changing telecommunications market, Maxview cannot be held responsible for changes made to communication services. Software updates to address such issues are not covered under guarantee.

### Terms and Conditions of the Guarantee

- a) Your guarantee starts from the date you purchased your item. Your guarantee will be valid from date of manufacture if you are unable to provide a proof of purchase.
- b) A guarantee authorisation must be obtained from Maxview prior to work commencing.
- c) Maxview is responsible for the cost of a replacement part if the original part is determined to be defective under the terms of the guarantee.
- d) Any replacement parts required will be supplied, by return, on receipt of the faulty part.
- e) Any work requiring replacement parts will only be sanctioned on receipt of proof of the broken part.  
The customer is responsible for the cost of replacement parts after the guarantee period has expired.
- f) Our guarantee is "Back To Base." No travelling costs will be paid.
- g) Parts that suffer breakdown and/or failure due to flooding/water ingress or abrasive cleaning caused by solutions and/or Pressure Washers are not covered under our guarantee.
- h) Our guarantee does not cover installation or external wiring

This guarantee also does not apply where:

- The product has been abused, misused, improperly installed or improperly maintained.
- The product has been installed without the use of a Maxview mounting bracket designed for the product.
- Repairs have been made or attempted by others that are not certified by Maxview to do such repairs.
- Repairs are required because of normal wear and tear.
- Alterations have been made to the product.
- The antenna unit has been opened without authorisation.
- Damage has been caused by power washing.
- Circumstances beyond the control of Maxview cause the product to no longer operate correctly.
- Customer is not the original owner.



# Troubleshooting and FAQ's for Router

## 1. How can I test the speed of my connection?

There are various apps available that can be used to measure your upload and download speed. We recommend the Ookla speed test app, available from the App Store and Google Play Store. Before running the test, make sure your device is receiving internet through the Roam X Combo router.

## 2. What Download speed do I need to watch TV through my Roam Combo X?

As a general rule of thumb, you will need 3Mbps to stream standard definition video and 5Mbps to stream high definition video.

## 3. My phone is connected to the Roam Combo X but I don't have any phone signal?

The Roam X Combo creates a Wi-Fi hotspot which can be used to provide a Wi-Fi connection to your device. This means it can be used for all features on your device that use an internet connection. This includes Facetime, WhatsApp and Wi-Fi calls, but will not include traditional voice calls and SMS text messages.

## 4. I am connected to the Roam Combo X with a good Wi-Fi signal but nothing is loading?

If you are near to the Roam X Combo Router, it is likely that you will have a strong Wi-Fi connection to the router. However, this doesn't mean that the Roam X Combo is receiving a strong signal from the 3G/4G network. We suggest trying a different location and ensuring you still have data on your SIM card. If you are using the router to connect to an existing Wi-Fi hotspot, check the Wi-Fi source is reliable and has a good download speed before connecting the Roam Combo X to it.

## 5. Why has my phone got faster internet speed than my Roam Combo X ?

The Roam X Combo has been optimised for remote and rural locations where our customers tend to travel. Using the router's 3G/4G capabilities in urban locations where the 3G/4G signal is strong, you should still be able to receive a fast internet speed (enough to stream HD TV). However, the Roam Combo X performs best when 3G/4G signal is limited, allowing you to use the internet when other devices can't.

## 6. I have forgotten my Wi-Fi password, what should I do?

You will need to carry out a factory reset. See page 15.

## 7. Where can I find more information about the advanced functionality of my router?

If this manual does not cover the function you wish to use, detailed step-by-step information on every function of the router is available at <https://wiki.teltonika-networks.com/view/RUTX11>

## 8. Is there an easier way to change the settings for my router?

Most router functionality can be controlled using the Teltonika App.

## 9. Does the Roam Combo X work on 5G?

The benefits of 5G to our customers are still limited due to the limited number of (mostly urban) areas where the technology is available. That said, as the 5G network continues to expand, 5G may well benefit customers in years to come. To ensure customers are futureproofed for when 5G technology does provide a benefit, Maxview have therefore integrated 5G capabilities into the Roam Combo X antenna as standard. Please note, the Roam Combo X Router is a 3G/4G router and does not receive 5G. Therefore, customers wanting to use 5G will need a 5G router and SIM Card plan.

## 10. Does the Roam Combo X work when my vehicle is moving?

Yes, when the Roam Combo X is using 3G/4G as the connection source (rather than Wi-Fi), the Roam Combo X will work when you are in motion.

### **11. Why do I lose connection to my Roam X Combo when I move in or out of range of the Wi-Fi source my Roam X Combo is using?**

The Roam X Combo will automatically detect and connect to the Wi-Fi source you have set up in the Web User Interface. When the Roam X Combo detects that this network has become available (or unavailable), the router will switch from receiving Wi-Fi to 3G/4G (or vice versa). During this sequence, there will be a brief period where there is no signal available to the router. Because of this, some devices will disconnect from the Roam X Combo hotspot. If this is the case, simply reconnect to the Roam Combo X hotspot and you should be back up and running.

### **12. I am revisiting a location where I have previously been connected to the Wi-Fi using the Roam Combo X. Why doesn't my Roam X Combo automatically reconnect?**

When using an existing Wi-Fi hotspot as the connection source, the Roam X Combo will only store the last Wi-Fi hotspot used. If you are revisiting a location which was not the most recent location used, you will need to visit the Web User Interface to input the new Wi-Fi source details. For more information on how to do this, see page 25. If the location you are revisiting is the last Wi-Fi source the Roam Combo X Router was set up with, whilst located within good range of the Wi-Fi source, try rebooting the router. It should now automatically connect. If this does not work, it is possible that the password for the Wi-Fi source has changed. If so, you will need to log into the Web User Interface and update the password. See page 30 for instructions on how to do this.

### **13. Some buttons on the Web UI are not responding?**

We recommend using the Google Chrome browser when using the Web UI. If you are using a different browser and experience problems, you can also try holding down the button you wish to select.

### **14. I have connected the Roam X Combo Router to an existing Wi-Fi source, however I cannot receive the internet.**

- It is possible that the IP Address of your Wi-Fi source is the same as that of the Roam X Combo Router. This will cause this function to stop working. See page 28 for more information.
- If this change does not work, it may be that the Wi-Fi source you are connected to is slow or even unusable. You can try moving closer to the source. If this does not work, the Wi-Fi source may be too slow to use; the connection received through the Roam Combo X Router is only as good as the source.

### **15. The 192.168.1.1 web address does not open the WebUI.**

- Ensure the device you are connected to is receiving its Wi-Fi from the Roam Combo X Router.
- Ensure that you have not changed the LAN IP address. If this has been changed, the new IP address must be used to access the WebUI.

### **16. Why does my Apple device say the Roam X Combo Wi-Fi has weak security?**

Firstly, rest assured this message is nothing to worry about and your Wi-Fi connection is still perfectly secure. As default, the Roam Combo X Router uses WPA2-PSK as the Wi-Fi security standard. As new standards emerge, Apple have highlighted vulnerabilities in the WPA2-PSK encryption standard and therefore devices on iOS 14 or newer highlight this with the 'weak security' message. In reality, this protocol remains secure and is the standard used by most routers in the marketplace today. The newer gold standard protocol is WPA3. Maxview are working with Teltonika to ensure this protocol is introduced when available.

### **17. What does the Maxview Roam X Combo App do?**

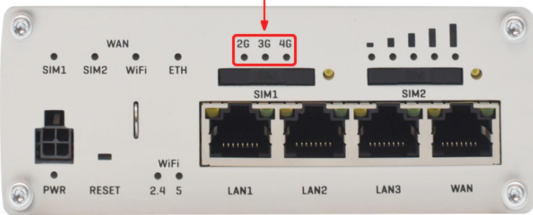
The Maxview Roam X Combo App is available free of charge to all customers who have purchased a Maxview Roam Combo X. It is available to download from the Android Google Play and Apple App Stores. The Roam Combo X App is designed to simplify some of the key functions of the Maxview Roam Combo X including set up, changing the Roam X Combo hotspot Wi-Fi name/password as well as switching between 3G/4G and Wi-Fi source. With the Roam X Combo App, it is no longer necessary to access the router settings through the web browser.

18. What are the lights on the side of the Roam X Combo Router telling me?

Basic use and diagnosis using the LED's has been outlined below.

### Mobile network type LEDs

The mobile network type LEDs are located near the SIM card slot.

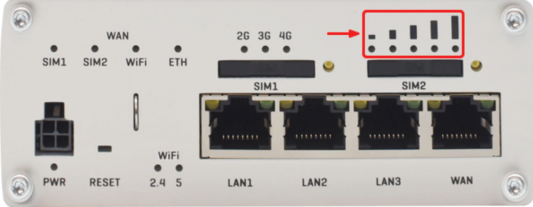


They display which type of Internet connection is currently active.

Action	Description
3G LED turned on	Device is connected to a 3G network.
4G LED turned on	Device is connected to a 4G network.
3G blinking	Device is connected to a 3G network but hasn't received an IP address.
4G blinking	Device is connected to a 4G network but hasn't received an IP address.
3G & 4G LEDs blinking at the same time every 500 ms	No SIM card or incorrect PIN.
3G & 4G LEDs turns on and off in a sequence one after the other	The device is attempting to connect to a mobile network operator.

### Mobile signal strength indication LEDs

The mobile signal strength indication LEDs are located near the SIM card slot.



Visit [wiki.teltonika-networks.com/view/RUTX11\\_LEDs](http://wiki.teltonika-networks.com/view/RUTX11_LEDs) for a full list of the LED configurations and what these mean.

19. What is a Captive Portal?

A Captive Portal is the term used when a public Wi-Fi source redirects the user to a webpage before they can gain access to the internet.

This page usually requires the user to input details such as an email address and accept terms of use.

Wi-Fi sources requiring use of a Captive Portal are not supported by the Maxview Roam Combo X and therefore cannot be used as an Wi-Fi source.

In this instance we suggest you continue to use the 3G/4G connection or connect directly to the Wi-Fi connection with your Wi-Fi enabled device.



Example of a typical captive portal login.

## 20. What is WAN Failover?

Once Wi-Fi has been activated as the internet source, the Roam X Combo uses WAN failover as default. This feature is designed to overcome the need to manually switch the internet source between mobile and Wi-Fi. When a Wi-Fi connection has been set up, the Roam Combo X Router will prioritise this as the source of internet and only use the mobile connection when the Wi-Fi is no longer available.

## Troubleshooting and FAQ's - For TV reception & Signal Booster

### 1. I have no picture on my TV or the picture is breaking up/freezing?

- Ensure all connections are correct
- Ensure the Variable Signal Booster power LED is on
- Try adjusting the gain control on the Variable Signal Booster (turn to right to increase gain. We suggest you start with 100% gain and reduce if in a high strength area)
- To maximise the number and quality of channels found, you will need to retune your TV/Freeview box when changing locations, the aerial is likely to be picking up channels from different transmitters

### 2. Power LED is not lit on my Variable Signal Booster

- Ensure power switch is in the on position
- Ensure the power source is connected correctly
- Check the inline fuse in the power cable

### 3. Should I be using the Variable Signal Booster (VSB) in Line with my Roam Combo X?

We recommend always using the VSB in-line as this will boost the signal quality significantly. However, in some areas where the signal strength is good, it may not be necessary to use the VSB

### 4. Can I change the length of the cable supplied with my Roam Combo X?

- Yes, you can shorten the cable by cutting it to the required length and refitting the F connector.
- Details on how to fit the F connector on page 10
- You can lengthen the cable by using a back to back connector and some additional F cable or a flylead
- Please note, longer cable may introduce signal losses and reduce signal quality

### 5. How should I clean my Roam X Combo. Do I need to carry out any maintenance?

- The Roam Combo X has been designed to be maintenance and trouble free
- If you do wish to clean your 5G Combo Antenna, use a sponge with mild soap and a minimal amount of water
- Never use a powerful flow of water, power washer or solvents to clean

## Certification and Environment



The Roam X Combo 3G/4G/Wi-Fi system has been designed, constructed and marketed in compliance with the safety and product requirements of the relevant EEC Directives.



Products marked with the crossed out wheeled bin must not be disposed of with normal household waste but made available for separate household collection. Separate collection of used products and their packaging allows materials to be recycled and used again. Re use of recycled materials helps prevent environmental pollution and reduces the demand for raw materials.



UK Conformity Assessed (UKCA) marking is a certification mark that indicates conformity with the applicable requirements for products sold within Great Britain.

### SIMPLIFIED EU DECLARATION OF CONFORMITY

Hereby, Maxview Ltd. declares that the radio equipment described with this document is in compliance with Directive 2014/53/EU.

The full text of the EU declaration of conformity is available at the following internet address:  
[www.maxview.co.uk/certifications](http://www.maxview.co.uk/certifications).

# Specifications

## 4G/5G Antenna Function

Frequency	698-6000 MHz/5.9dBi -8.8dBi. Includes all 3G, 4G and 5G frequencies
Gain:	5.9dBi - 8.8dBi
Cable Length:	2 x 0.8m (Cable extensions available separately)
Cable Type:	2 x SMA

## UHF Antenna Function

Frequency	Wideband for UHF TV
Gain:	19dB with Signal Booster
Cable Length:	1 x 5m
Cable Type:	1 x Coaxial (Supplied with 'F' Connector)

## Antenna General

Type:	Omni-directional
Power:	Passive
Dimensions:	L: 356mm H: 194mm D: 311mm
Weight:	995g

## Router

Router Type:	CAT 6 LTE - 3G/4G and Wi-Fi
Compatible Speeds:	Up to 300Mbps
Wi-Fi:	MU-MIMO - 802.11.b/g/n/ac - 2.4GHz - 5GHz
3G/4G Antenna Connector:	2 x SMA
Ethernet Ports:	4 x RJ45 (WAN and LAN)
Connection Devices:	Up to 100
External Antennas:	2 x 3G/4G (for external roof mount antenna) 2 x Wi-Fi (for internal whip antenna)
Power:	9-30 VDC (Reverse Polarity Protection) 12V Automotive Power Supply Included. 1.5m Lead Length 2 Amp Fused Input Protection
Power Consumption:	0.4A Max
Family Browsing:	Yes, blacklists and whitelists
Remote Diagnostics:	Yes
SIM:	2 x Unlocked Ports
Housing:	Aluminium
Dimensions:	H: 270 x W: 115 x D: 45mm
Weight:	550g

## Signal Booster

Compatibility:	Digital TV and DAB radio
Frequency	Wideband for UHF TV and VHF radio
Power Supply:	12/24 DC (Included)
Power Consumption:	Low (50mA)
Inputs:	1
Outputs:	2
Variable Gain:	0 - 19dB
Noise:	3.5dB
Product Dimensions:	H: 51 x W 142 x D 31.5mm

The Maxview Roam X Combo system uses a TELTONIKA NETWORKS UAB RUTX11 LTE router.

Used Frequency Range of Built-In RF Module:

Band		UL f, MHz	DL f, MHz
GNSS	-	-	1559-1610
WCDMA	1	1920-1980	2110-2170
	3	1710-1785	1805-1880
	8	880-915	925-960
LTE	1	1920-1980	2110-2170
	3	1710-1785	1805-1880
	7	2500-2570	2620-2690
	8	880-915	925-960
	20	832-862	791-821
	28	703-733	758-788
	38	2570-2620	2570-2620
	40	2300-2400	2300-2400
Wi-Fi 2.4GHz	1-13	2412-2472	
Bluetooth	0-78	2402-2480	
BLE	0-39	2402-2480	
Wi-Fi 5GHz U-NII-1	36-48	5180-5240	
Wi-Fi 5GHz U-NII-3	149-165	5745-5825	

Transmit Power:

- Wi-Fi 2.4GHz: 19.87 dBm (EIRP)
  - Wi-Fi 5GHz (U-NII-1): 22.44 dBm (EIRP)
  - Wi-Fi 5.8GHz (U-NII-3): 13.91 dBm (EIRP)
  - WCDMA (Band 1/8): 23 dBm
- WCDMA (Band 3): 24 dBm
  - LTE (Band 1/3/7/8/20/28/38/40): 24 dBm
  - Bluetooth: 9.84 dBm (EIRP)
  - Bluetooth LE: 9.62 dBm (EIRP)

**Standards Applied:**

TELTONIKA NETWORKS UAB have declared that the above product is in conformity with the relevant Community harmonisation: European Directive 2014/53/EU (RED). The conformity with the essential requirements has been demonstrated against the following harmonised standards:

Harmonized standard reference	Article of Directive 2014/53/EU	Test Report No.
IEC 62368-1:2014 EN 62368-1:2014 + A11:2017 EN 50385:2017 EN IEC 62232:2020	Health and safety - Article 3.1 (a)	R2111A1019-M1 ES190903014S
EN 55032:2015 + A11:2020 EN 55035:2017 + A11:2020 EN 301 489-1 V2.2.3 Draft EN 301 489-3 V2.1.2 EN 301 489-17 V3.2.4 Draft EN 301 489-19 V2.2.0 EN 301 489-52 V1.2.1	Electromagnetic compatibility - Article 3.1 (b)	R2111A1019-E1V1
EN 301 908-1 V15.1.1 EN 301 908-2 V13.1.1 EN 301 908-13 V13.1.1 EN 300 328 V2.2.2 EN 301 893 V2.1.1 EN 303 413 V1.2.1 EN 300 440 V2.2.1	Efficient use of radio spectrum - Article 3.2	R2111A1019-R1 R2111A1019-R2 R2111A1019-R3 R1907A0436-R4 R2111A1019-R4 R2111A1019-R5

The conformity assessment procedure referred to in Article 17 and detailed in Annex III of Directive 2014/53/EU has been followed with the involvement of the following Notified Body: LGAI Technological Centre (APPLUS). Notified Body No.: 0370.

Therefore  is placed on the product. EU Type Examination Certificate No. 0370-RED-4982

More information can be found at: <https://maxview.co.uk/certifications/>