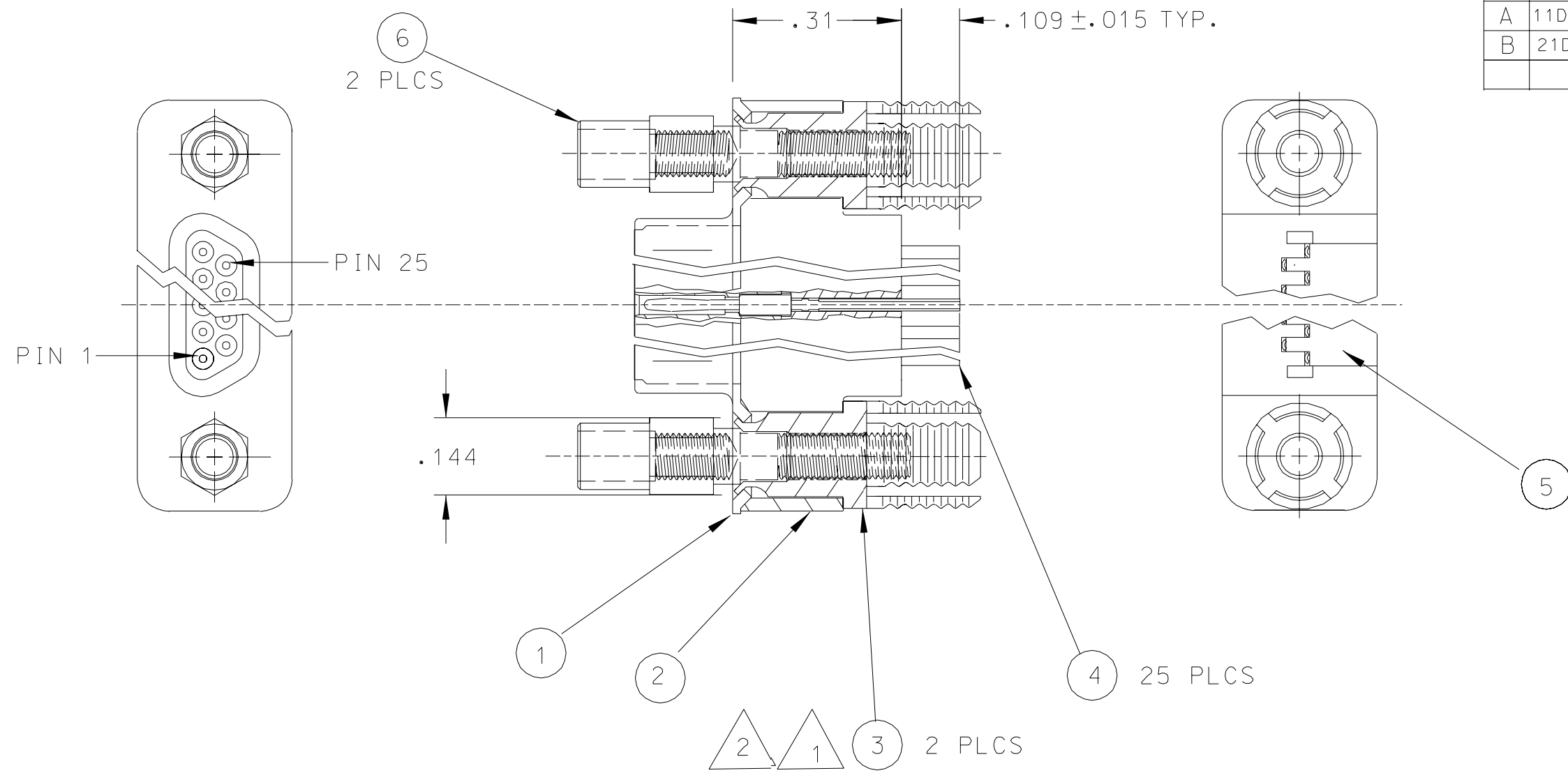

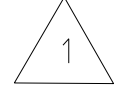



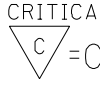
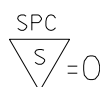
| REV | DATE | ECN NO. | APPVD BY | REL BY |
|-----|---------|-------------|----------|--------|
| A | 11DEC00 | UM2001-0178 | | |
| B | 21DEC00 | UM2001-0188 | | |



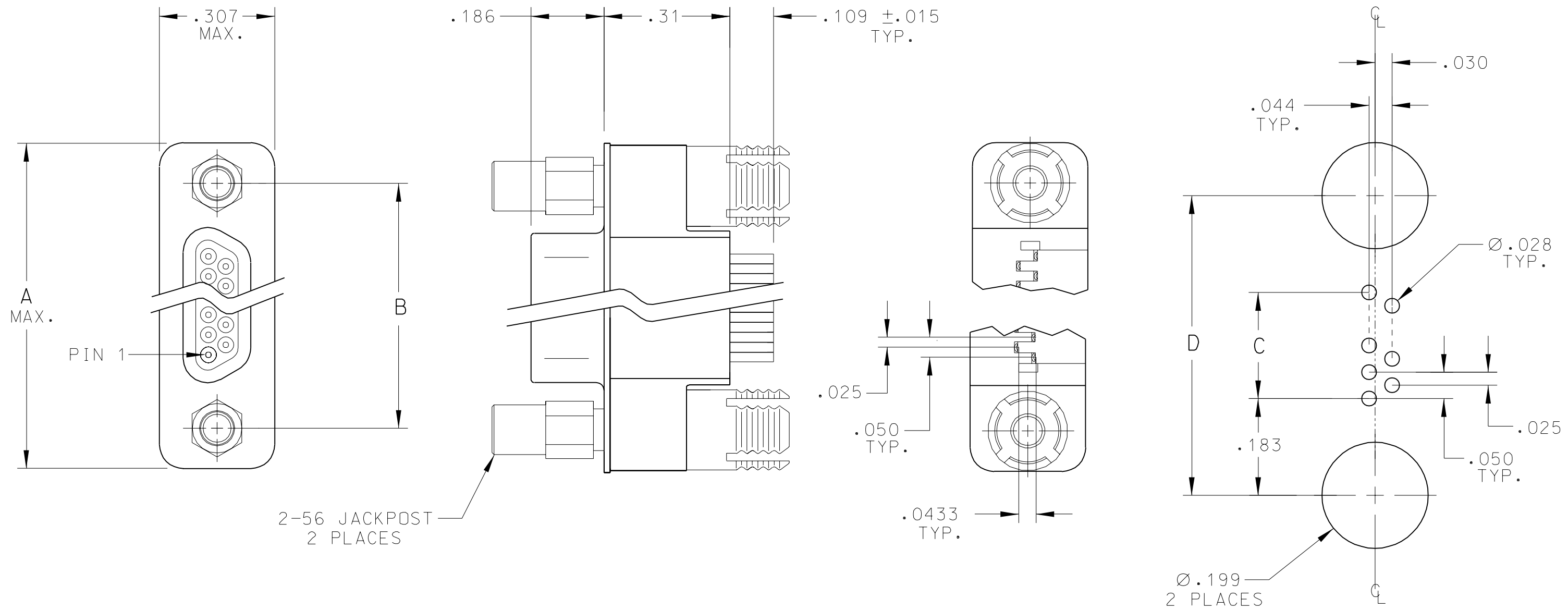
| QTY | MATERIAL NO. | DESCRIPTION | ITEM |
|-----|--------------|--------------------------------|------|
| 2 | 830410005 | JACKPOST, 2-56 THREAD | 6 |
| 1 | 830100094 | CONTACT RETAINER | 5 |
| 25 | 830009006 | CONTACT, PIN, PCB | 4 |
| 2 | 830410078 | JACKPOST RETAINER w/BOARD LOCK | 3 |
| 1 | 830100092 | INSULATOR, STRAIGHT, SIZE 25 | 2 |
| 1 | 830150022 | PLUG SHELL, SIZE 25 STAMPED | 1 |

 AFTER SWAGING, ITEM 3 TO WITHSTAND 40 IN-OZ OF TORQUE WITH NO INDICATION OF MOVEMENT
 SWAGE ITEM 3 INTO ITEM 1 TO WITHSTAND 5 LB AXIAL PULL OFF FORCE ON ITEM 3.

NOTES: UNLESS OTHERWISE SPECIFIED.

| | | | |
|---|---|--|--|
| QUALITY SYMBOLS MAJOR  = 0 CRITICAL  = 0 SPC  = 0 | UNLESS SPECIFIED: ALL DIMENSIONS IN INCHES GENERAL TOLERANCES: 3 PLACES ± .005 2 PLACES ± .010 ANGULAR ± 2° Uti-Mate CAGE CODE 58967 | SCALE NONE DWG SIZE B DRAWN BY & DATE AW 12/11/00 CHECKED BY & DATE AW 12/11/00 APPROVED BY & DATE | THIRD ANGLE PROJECTION REVISE ON CAD ONLY TITLE: CONNECTOR, COMMERCIAL-D, PLUG, VERTICAL, JACKPOST, SIZE 25 MOLEX INCORPORATED Orange, CA 92868 PART NO. 836149016 DRAWING NO. E-83614-9016 SHEET NO. 1 OF 1 THIS DRAWING CONTAINS INFORMATION THAT IS PROPRIETARY TO MOLEX INCORPORATED AND SHOULD NOT BE USED WITHOUT WRITTEN PERMISSION. |
|---|---|--|--|

| REV | DATE | ECN NO. | APPVD BY | REL BY |
|-----|---------|-------------|----------|--------|
| A | 23OCT00 | UM2001-0123 | | |
| B | 21DEC00 | UM2001-0188 | | |



RECOMMENDED
P.C.B. LAY-OUT
.060 PANEL THICKNESS

| PART NUMBER | SIZE | A MAX. | B NOM. | C REF. | D NOM. |
|-------------|------|-----------|-----------|-----------|-----------|
| 836129024 | 15 | .935 | .715 | .350 | .715 |
| 836149016 | 25 | 1.185 | .965 | .600 | .965 |

| | | | | | |
|--|--|-------------------------------------|---------------|--|------------------------------|
| QUALITY SYMBOLS MAJOR $\nabla=0$ CRITICAL $\nabla_C=0$ SPC $\nabla_S=0$ | UNLESS SPECIFIED: ALL DIMENSIONS IN INCHES | SCALE NONE | DWG SIZE B | THIRD ANGLE PROJECTION | REVISE ON CAD ONLY |
| | GENERAL TOLERANCES: 3 PLACES $\pm .005$ 2 PLACES $\pm .010$ ANGULAR $\pm 2^\circ$ | DRAWN BY & DATE D.URBACH 23OCT00 | | TITLE: CONNECTOR, COMMERCIAL-D, PLUG, VERTICAL, JACKPOST, SIZE 15 & 25 | |
| | Ulti-Mate CAGE CODE 58967 | CHECKED BY & DATE | | MOLEX INCORPORATED Orange, CA 92868 | |
| | | APPROVED BY & DATE | | PART NO. SEE "TAB BLOCK" | DRAWING NO. SD-83612-9024 |
| THIS DRAWING CONTAINS INFORMATION THAT IS PROPRIETARY TO MOLEX INCORPORATED AND SHOULD NOT BE USED WITHOUT WRITTEN PERMISSION. | | | | | |
| | | | | | REV B |

2. MARKING: NONE.
1. REFER TO PS-83421-9000 FOR PRODUCT SPECIFICATION.
NOTES: UNLESS OTHERWISE SPECIFIED.