

# FSP200 OPTICAL FUSION SPLICER

TESTING | TROUBLESHOOTING | ACCURACY  
Splice Fiber the Right Way!

## VERSATILE

Designed to meet virtually any FTTx installation both indoors and out. Can also be used for P2P installations including back-haul, cellular and LAN.

## CORE ALIGNMENT

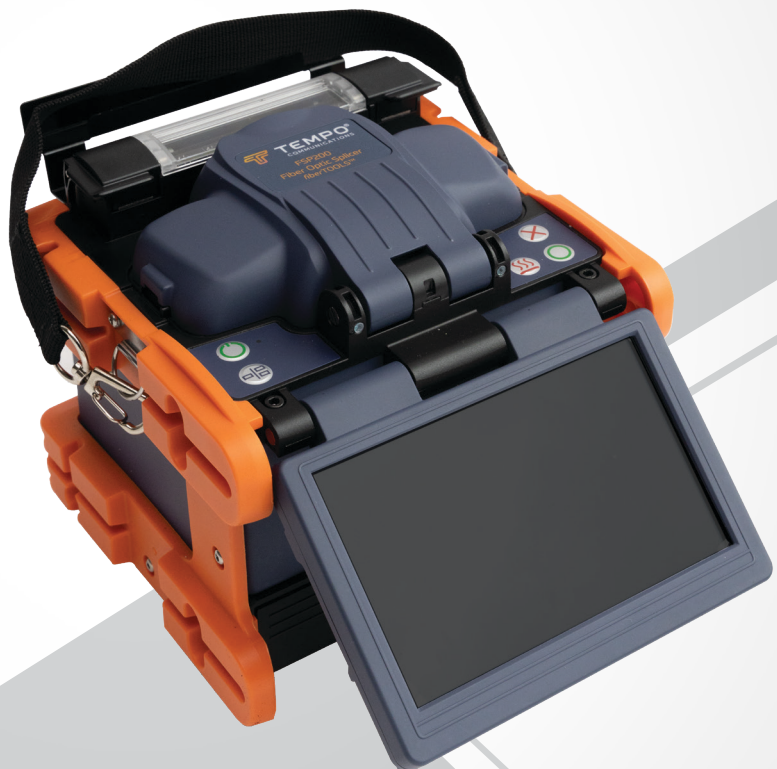
Out performs all other splicing technologies with six motor performance.

## FAST ACCURATE SPLICING

Seven seconds splice time.

## BENEFITS

- **Core Alignment** Low splice loss Technology for the most complex fiber geometries.
- **Compact.** Small and lightweight for the most demanding jobs.
- **IP52 Ingress Protection Rating.** Resistant to dust and water.
- **Compatible.** Uses the Tempo Communications splice on connector
- **Adaptable.** Splices 200 micron "Micro" fibers.



# FSP200

## OPTICAL FUSION SPLICER

SPECIFICATIONS	<b>Applicable Fibers:</b>	SM (G.652); MM (G.651); DS (G.653); NZDS (G.655); BIF (G.657); EDF
	<b>Fiber Cleaved Length:</b>	10mm
	<b>Cladding Diameter:</b>	80 TO 150µm
	<b>Coating Diameter:</b>	100 to 1000µm
	<b>Fiber Count:</b>	Single
	<b>Fiber Aligning Method:</b>	Core Alignment
	<b>Splice Loss (Typical):</b>	0.02 dB (SM); 0.01 dB (MM); 0.04 dB (DS); 0.04 dB (NZDS & BIF)
	<b>Splicing Mode:</b>	60 Preset / User Definable Modes
	<b>Splice Time (Typical):</b>	7 seconds <sup>1</sup>
	<b>Boot Time:</b>	5 seconds
	<b>Number of Splices Per Battery Charge:</b>	200 (including 60mm heat shrink cycle) <sup>2</sup>
	<b>Splice -On-Connector:</b>	SC, LC, FC, ST
	<b>Arc Calibration Mode:</b>	Automatic and Manual
	<b>Protection Sleeve Length:</b>	60mm, 40mm, Micro Sleeves
	<b>Ingress Protection:</b>	IP5X (Dust); IPX2 (Water) <sup>3</sup>
	<b>Storage of Splice Results:</b>	5,000 Results, 100 screenshots
	<b>Drop Test:</b>	76cm on five axis
	<b>On Board Instruction Manual</b>	YES

SPECIFICATIONS	<b>Tension Test:</b>	2N
	<b>Vibration Resistance</b>	10Hz to 500Hz with a spectral density of 0.03g <sup>2</sup> /Hz
	<b>Fiber Display Magnification:</b>	200X
	<b>Tube Heating Mode:</b>	20 Preset / User Definable Modes Adjustable 0-240 seconds
	<b>Tube Heating Time (Typical):</b>	18 seconds <sup>4</sup>
	<b>Attenuator Mode:</b>	0.1 to 15 dB
	<b>Electrode Life:</b>	5,000 Splices
	<b>Display:</b>	5.0" Color Touchscreen LCD
	<b>Connectivity:</b>	USB
	<b>Operating Conditions:</b>	Pressure: 0 to 16,404 feet (0 to 5,000 meters) above Sea Level Humidity: 0 to 95% Temperature: -4 to +131F (-20 to +55C)
	<b>Storage Conditions:</b>	Temperature: -40 to +158F (-40 to +70C)
	<b>Power Supply:</b>	100 to 240V AC Adapter; Li-ion Battery (4400 mAh)
	<b>Weight:</b>	3.74lbs (1.7kg) with battery
	<b>Dimensions (HxWxD):</b>	4.9" x 4.9" x 5.3" (125 x 125 x 135mm)
	<b>Password Protection:</b>	Yes
	<b>On Board Instruction Manual</b>	Yes

(1) Fast mode. (2) 90s/cycle splice time and power save functions activated. Number of cycles may vary depending on battery status and ambient operating conditions. (3) Dust resistance and rain resistance test do not guarantee that the product will not be damaged under these conditions. (4) Dependent on splice protector used, ambient conditions and assuming that the oven is not cold.

## ORDERING INFORMATION:

CAT NO.	DESCRIPTION
FSP200	FSP200 Optical Fusion Splicer
FSP200-KIT1	FSP200 Fusion Splicer & Cleaver Kit
FSP200-KIT2	FSP200 Contractor Fusion Splicer Kit
FCL200	FCL200 Optical Fiber Cleaver
01329	Replacement Electrodes
07096	915FS/FSP200 Replacement Power Supply
01640	Cleaving Wheel
01332	200/250µm Adapter (Pair)
01333	900µm Adapter (Pair)
01335	Adapter, Splice-On Connector, SC & LC
02401	Adapter, Splice-On Connector, ST & FC
03245	3mm Adapter (Pair)
05801	Loose Tube Adapter (Pair)

CAT NO.	DESCRIPTION
07388	Universal Adapter (Pair)
06811	Battery
NA LC	North American Line cord
02571	European Line Cord
02570	UK Line Cord
02568	12 V DC Car Adapter
PA1171	ProGrip 5-in-1 Fiber Optic Stripper
PA1177	ProGrip 3-in-1 Fiber Optic Stripper
PA1162	Economy Fiber Optic Stripper
PA1511	Kevlar Cutter
MSS100	Mid Span Slitter
05245	Splicer Electrode Cleaner

### FSP200-KIT1

Includes: FSP200 Optical Fusion Splicer and FCL200 Optical Fiber Cleaver.

### FSP200-KIT2

Includes: FSP200 Optical Fusion Splicer, FCL200 Optical Fiber Cleaver, Fiber Optic Stripper, PA1171, and an extra battery.

### FCL200 Optical Fiber Cleaver Kit includes:

Cleaver, dust bin, fixed clamp with screw, hard carrying case, instruction sheet and allen key.

### Every FSP200 includes:

- Black carrying case
- Tweezers
- Extra set of electrodes
- USB cable
- 250um adapters (pair)
- 900um adapters (pair)
- SC/LC SOC Adapter
- Splice on Connector oven insert
- Allen key
- Power supply
- Line cord
- Carrying strap
- Cooling tray
- Battery
- Electrode Cleaner
- Quick Reference Card

1390 Aspen Way Vista, CA • 92081 TC-6581 03/23

Latin America Phone : 1 760 510 0558 | EMEA Phone: +44 (0) 1633 927 050

India and SAARC Region Sales: indiaSales@tempocom.com

EMEA: Tempo Europe Limited • Brecon House

William Brown Close • Cwmbran • NP44 3AB • UK

©2022 Tempo Communications Inc. • An ISO 9001 Company



Follow us @TempoComms



*Renewed Vision. Innovation Forward.*

TempoCom.com | tel 800.642.2155