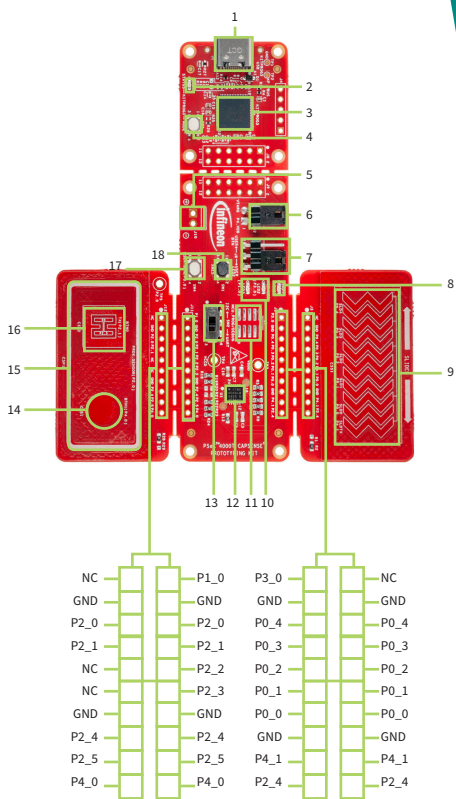


## QUICK START GUIDE

# PSoC™ 4000T CAPSENSE™ Prototyping Kit CY8CPROTO-040T

Easy, out-of-the-box experience with 5th-generation CAPSENSE™ technology demonstrating best-in-class low-power touch performance on PSoC™ 4.



- 1 USB Type-C connector (J1)
- 2 KitProg3 status LED (LED4)
- 3 PSoC™ 5LP MCU with KitProg3 firmware (U2)
- 4 KitProg3 mode switch (SW3)
- 5 External power input (J10)\*
- 6 Target MCU current measurement header (J2)
- 7 USER LED2 and User button selection header (J6)
- 8 Power LED (LED1)
- 9 CAPSENSE™ 5-segment slider (CSS1)
- 10 USER LED's (LED2, LED3)
- 11 MiniProg4 SWD interface header provision (J7)\*
- 12 PSoC™ 4000T MCU (U1)
- 13 Target I2C/UART interface selection switch (SW2)
- 14 CSD CAPSENSE™ button (CSB1)
- 15 CAPSENSE™ proximity sensor (CSP1)
- 16 CSX CAPSENSE™ button (CSB2)
- 17 USER button (SW4)
- 18 RESET switch (SW1)

Note : \* footprint only, not populated on the board

### Step 1: Power up the kit

1. Ensure that the jumper is populated at J2 header.
2. Ensure that the jumper is populated at J6 (between Pin1 and Pin2).
3. Ensure the SW2 position is at I2C.
4. Connect the board to your PC using the USB Type-C cable at J1 connector and observe that the Power and Status LEDs (LED1, LED4) turn ON.

### Step 2: Test the operation

1. Touch one of capacitive button (either CSB1 or CSB2) and the LED2 will turn ON.
2. Swipe capacitive slider and the LED3 brightness will change relative to finger position on slider.

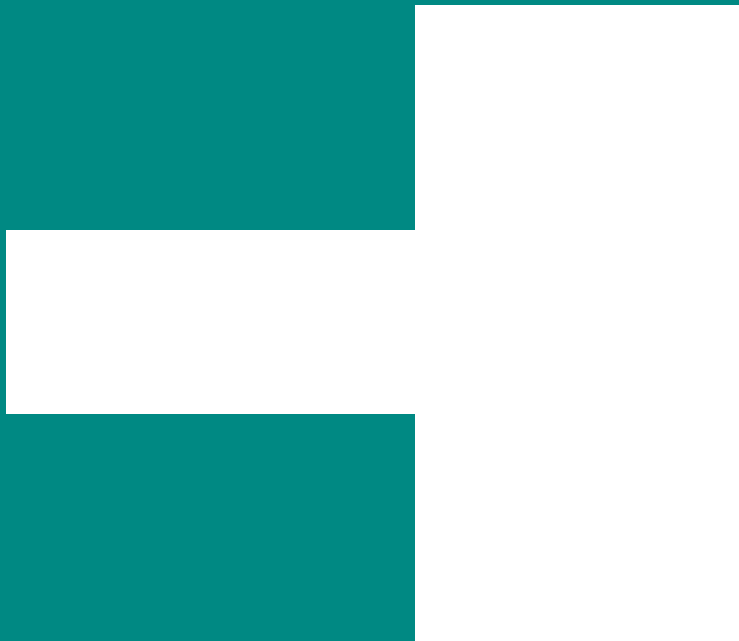


For more information, please visit: [www.infineon.com/CY8CPROTO-040T](http://www.infineon.com/CY8CPROTO-040T)

**PSoC™ Rocks**



PSoC™ 4000T CAPSENSE™ Prototyping Kit  
CY8CPROTO-040T



Contents under the label