

# Micro SD Connector

**multicomp** PRO

**RoHS  
Compliant**

## Specification

### Material

Housing : LCP UL94 V-0, Black Colour  
 Shell : Stainless Steel  
 Contact : Copper Alloy

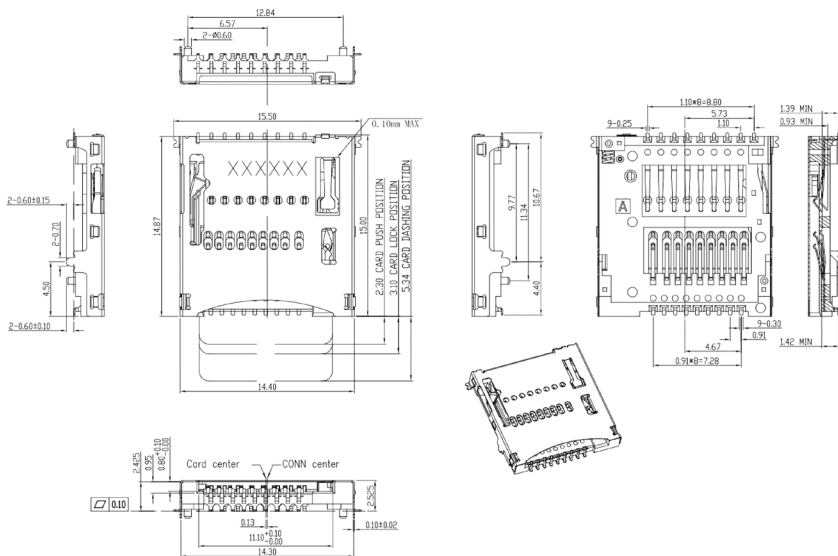
### Finish

Contact : Matte Tin 80u" Min.v On Solder Tail Area  
 30u" Min. Nickel Plating Overall  
 Shell : 50u" Min. Nickel Plating Overall

### Electrical Characteristics

Operating Voltage : 100V AC (rms)/DC  
 Current Rating : 0.5A  
 Operating Temperature : -25°C to +85°C  
 Contact Resistance : 100mΩ Max.  
 Insulation Resistance : 1000MΩ Min. At 250V DC  
 Dielectric Withstanding Voltage : 500V AC per 1 Minute

## Diagram



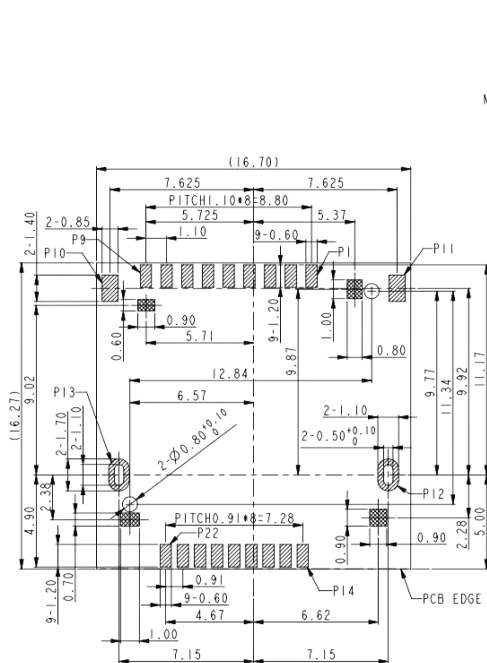
Pin No.	Micro SD Express Card
P1	Micro SD DAT2/CLKREQ#
P2	Micro SD CD/DAT3/PERST#
P3	Micro SD CMD
P4	Micro SD V <sub>DD1</sub>
P5	Micro SD CLK
P6	Micro SD V <sub>SS</sub>
P7	Micro SD DAT0/REFCLK+
P8	Micro SD DAT1/REFCLK-
P9	Micro SD CD
P10	GND
P11	GND
P12	GND
P13	GND
P14	Micro SD V <sub>DD2</sub>
P15	Micro SD V <sub>DD3</sub>
P16	Micro SD V <sub>SS</sub>
P17	Micro SD PCIe TX+
P18	Micro SD PCIe TX-
P19	Micro SD V <sub>SS</sub>
P20	Micro SD PCIe RX-
P21	Micro SD PCIe RX+
P22	Micro SD V <sub>SS</sub>

Dimensions : Millimetres

Newark.com/multicomp-pro  
 Farnell.com/multicomp-pro  
 sg.element14.com/b/multicomp-pro

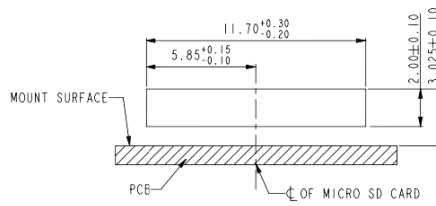
**multicomp** PRO

# Micro SD Connector



RECOMMENDED P.C.B LAYOUT  
TOP VIEW (TOLERANCE +/- 0.05)

- PAD AREA
- NO COMPONENT AREA (KEEP OUT AREA)
- RED GLUING AREA



### OPENING/CLOSE OF SWITCH

	CARD DETECT SWITCH
CARD UNINSERTION	OPEN
CARD HALF INSERTION	OPEN
CARD INSERTION	CLOSE
N/O	

### Part Number Table

Description	Part Number
7.1 Micro SD Connector, Push-Push	MP013695

**Important Notice :** This data sheet and its contents (the "Information") belong to the members of the AVNET group of companies (the "Group") or are licensed to it. No licence is granted for the use of it other than for information purposes in connection with the products to which it relates. No licence of any intellectual property rights is granted. The Information is subject to change without notice and replaces all data sheets previously supplied. The Information supplied is believed to be accurate but the Group assumes no responsibility for its accuracy or completeness, any error in or omission from it or for any use made of it. Users of this data sheet should check for themselves the Information and the suitability of the products for their purpose and not make any assumptions based on information included or omitted. Liability for loss or damage resulting from any reliance on the Information or use of it (including liability resulting from negligence or where the Group was aware of the possibility of such loss or damage arising) is excluded. This will not operate to limit or restrict the Group's liability for death or personal injury resulting from its negligence. Multicomp Pro is the registered trademark of Premier Farnell Limited 2019.

Newark.com/multicomp-pro  
Farnell.com/multicomp-pro  
sg.element14.com/b/multicomp-pro

