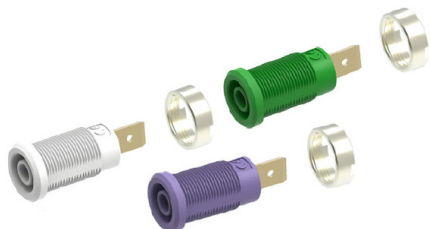


4mm Golded Banana Jack with 14.5mm Round Nut - Pin Connection



Applications

General purpose electric and electronic testing, controlling and measuring.

Specifications

Connector Type	: 4mm Banana Jack
Connector Mounting	: Panel Mount
Termination Type	: Flat Connecting Tab
Voltage Rating	: CAT III 1000V
Current Rating	: 36A
Resistor	: <12mΩ
Contact Material	: Gold Nickel Plating
Pin Dimension	: 6.3mm × 10mm

Part Number Table

Description	Insulator Colour	Part Number
4mm Golded Banana Jack w/ 14.5mm Round Nut, Flat Connecting Tab, Panel, 1000V, 36A	White	72-14172
	Green	72-14186
	Purple	72-14188

Important Notice : This data sheet and its contents (the "Information") belong to the members of the AVNET group of companies (the "Group") or are licensed to it. No licence is granted for the use of it other than for information purposes in connection with the products to which it relates. No licence of any intellectual property rights is granted. The Information is subject to change without notice and replaces all data sheets previously supplied. The Information supplied is believed to be accurate but the Group assumes no responsibility for its accuracy or completeness, any error in or omission from it or for any use made of it. Users of this data sheet should check for themselves the Information and the suitability of the products for their purpose and not make any assumptions based on information included or omitted. Liability for loss or damage resulting from any reliance on the Information or use of it (including liability resulting from negligence or where the Group was aware of the possibility of such loss or damage arising) is excluded. This will not operate to limit or restrict the Group's liability for death or personal injury resulting from its negligence. TENMA is the registered trademark of Premier Farnell Limited 2019.

Newark.com/exclusive-brands
Farnell.com/exclusive-brands
Element14.com/exclusive-brands

