

Product Change Notification (PCN)

PCN #: 3C-2024

Date: Mar 11, 2024

Please note, PCN 1A-2024 listed the wrong revision levels for the tables listed below: revisions were listed a revision higher than what they are. Revisions have been corrected

1 PRODUCTS AFFECTED

Laird Part Number	Old Rev.	New Rev.	Description
MG100 Gateways			
450-00011-K1	11	12	Sentrius MG100 micro gateway, LTE-M & NB1 modem, Bluetooth LE, MVNO SIM
450-00038-K1	11	12	Sentrius MG100 micro gateway, LTE-M & NB1 modem, Bluetooth LE, battery backup, MVNO SIM
450-00039-K1	12	13	Sentrius MG100 micro gateway, LTE-M & NB1 modem, Bluetooth LE, external antenna, MVNO SIM
450-00054-K1	12	13	Sentrius MG100 micro gateway, LTE-M & NB1 modem, Bluetooth LE, external antenna, battery backup, MVNO SIM
Pinnacle Dev Kits			
453-00010-K1	10	11	Development Kit, Pinnacle 100, Integrated Antenna
453-00011-K1	10	11	Development Kit, Pinnacle 100, 3 U.FL
Pinnacle Modems			
453-00010	12	13	Pinnacle 100, Integrated Antenna, Modem
453-00011	12	13	Pinnacle 100, 3 U.FL, Modem

These top-level part numbers include various accessories and packaging, as well as the main Sentrius Micro Gateway. All changes implemented in these kits have been associated with the Micro Gateway itself and the table below shows the correlation between the included gateway and associated kits.

Included Sentrius MG100 Gateway – Internal Part Number				
Laird Part Number	Old Rev.	New Rev.	Description	Associated Kit
450-00011	11	12	Assembly, Sentrius MG100, LTE-M & NB1, BLE, Flolive SIM, Canvas	450-00011-K1
450-00038	11	12	Assembly, Sentrius MG100, LTE-M & NB1, BLE, Battery Backup, Flolive SIM, Canvas	450-00038-K1
450-00039	12	13	Assembly, Sentrius MG100, LTE-M & NB1, BLE, External Antenna, Flolive SIM, Canvas	450-00039-K1
450-00054	12	13	Assembly, Sentrius MG100, LTE-M & NB1, BLE, External Antenna, Battery Backup, Flolive SIM, Canvas	450-00054-K1

2 DESCRIPTION OF CHANGES

All changes have been applied to all Pinnacle assembly / kit part numbers listed above:

- New HL7800 Sierra Wireless Firmware Update: [HL7800 Firmware & Release Note](#)
- Device standard firmware changed to Canvas Firmware for Pinnacle Dev Kits

3 REASON FOR CHANGE

- Device standard firmware changed to Canvas Firmware
- LTE Modem Firmware Updates

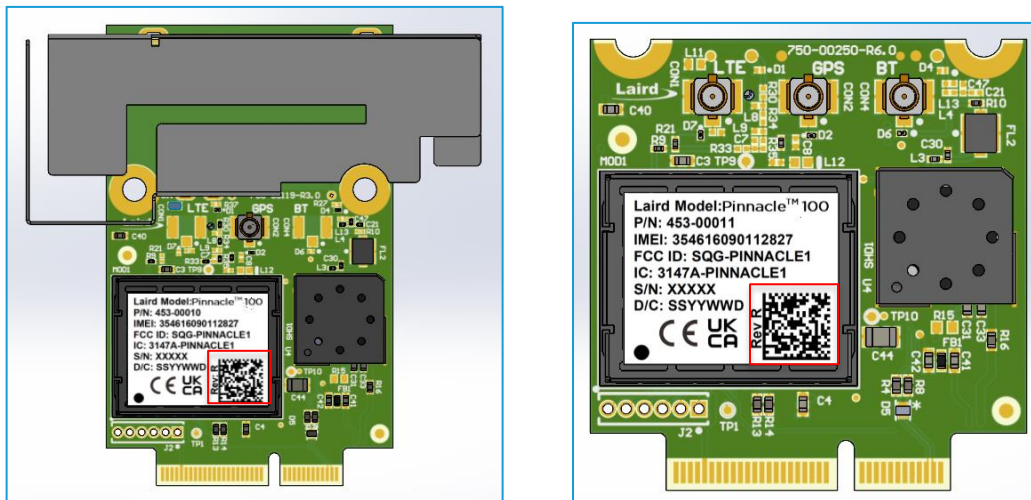
4 ANTICIPATED IMPACT OF THE CHANGE:

- New feature improvements as per release notes, linked above.

5 METHOD OF IDENTIFYING THE CHANGED PRODUCT

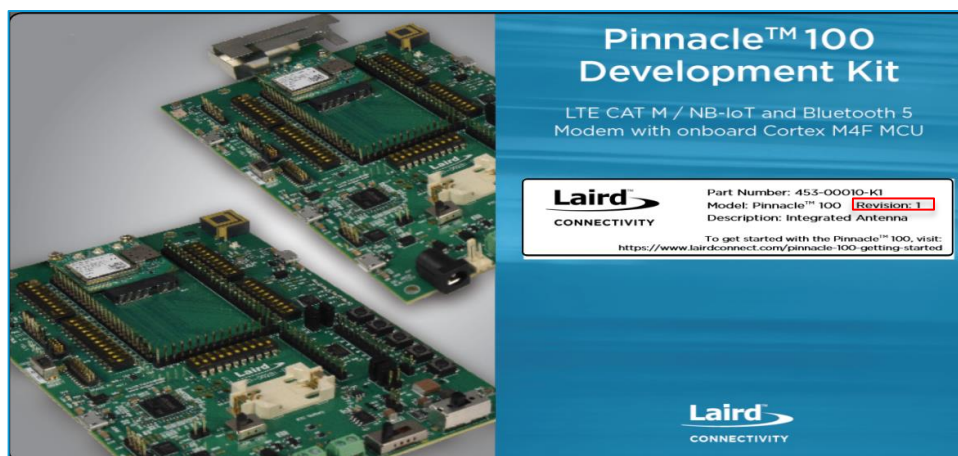
5.1 Assembly Part Number Changes (Modem Label)

- Revision changes available as revision number printed and within the barcode.



5.2 Top Level Part Number Changes (Packaged Kits)

- The product revision level is defined as a revision number printed on the content label for all kits. The specific kit part number and revision can be found on the label within red square area, as highlighted below.



6 FACTORY EFFECTIVITY DATE

- Products at the new revisions will begin shipping with the next shipment.

7 CONTACT INFORMATION:

Business Unit Headquarters	Laird Connectivity 50 S Main St., Suite 1100 Akron, OH 44308 USA Tel: 1(330) 434-7929 Fax: 1(330) 434-7931
Website	www.lairdconnect.com
Sales / Support Contact	https://www.lairdconnect.com/contact

Product Change Notices (PCNs) will be distributed at the discretion of Laird Connectivity. Occasionally, Laird Connectivity may adjust product revision levels for internal tracking purposes only, and customers may not receive formal notifications associated with those revision changes.