

# MICRO SWITCH

A DIVISION OF MINNEAPOLIS-HONEYWELL REGULATOR COMPANY  
ST. LOUIS, MISSOURI

FED. MFR. CODE 91929

# SWITCH - BASIC

CATALOG LISTING

## 102HS1

102HS1

M

DRAWING NUMBER

ISSUE 14

REVISIONS

A	CO 15761	L M H	21 APR 61
B	CO 15920	L M H	21 JUN 61
C	CO 17182	MBF	17 AUG 62
D	CO 29829	O M W	27 DEC 71
E	CO 55162N	TSK	20 JAN 86
F	CO 62736	M A M	15 MAR 88
C	CO 61043	B G S	16 SEP 88
H	CO 75625	J D B	15 JULY 93
J	CO 76375	W E S	31 AUG 93
K	CO-94122	T S M	17 MAR 99

(M) 102HS1  
ISSUE 4

REPLACES

RELEASE NO.

CHECK

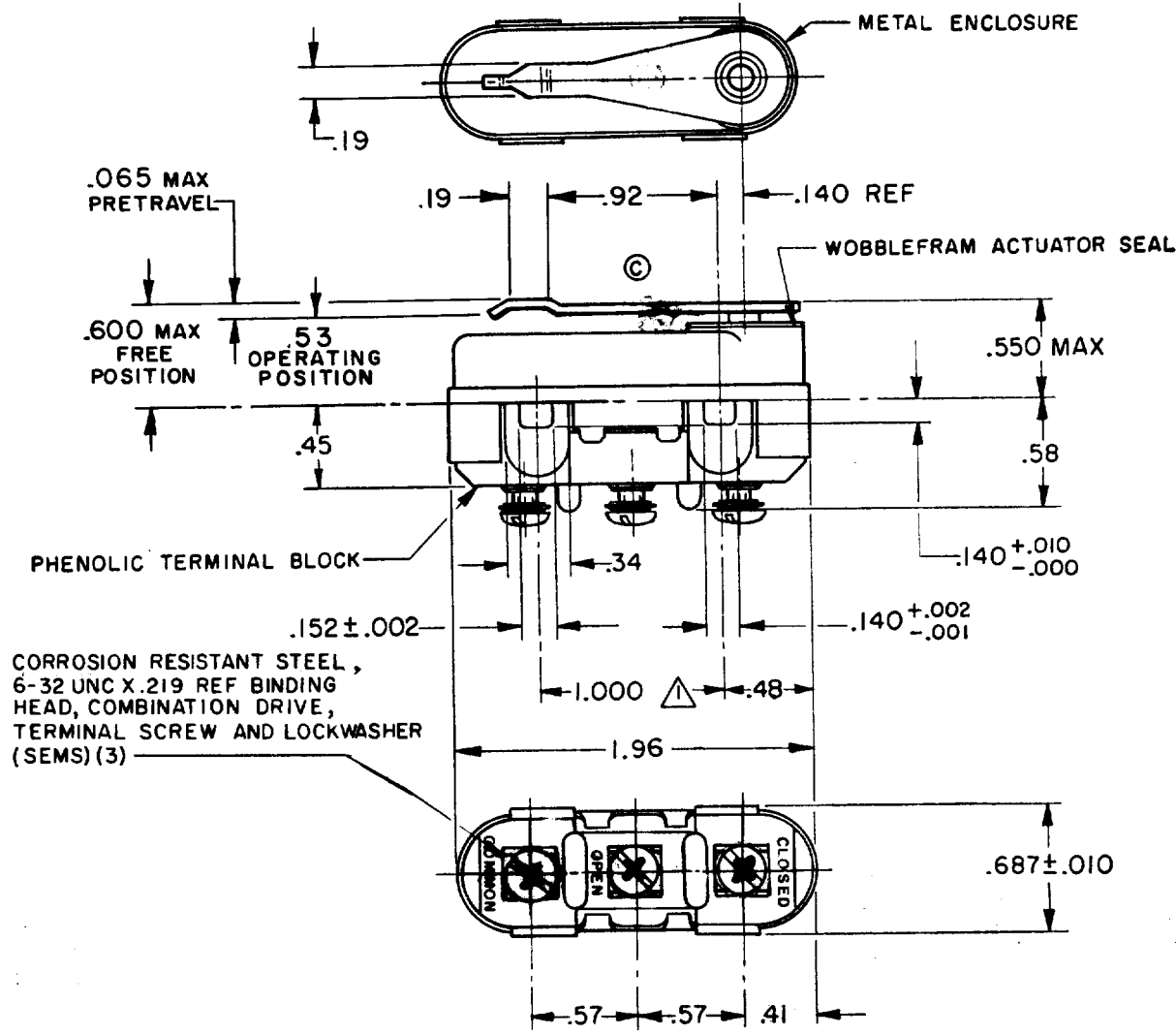
CHECK

CHECK

CHECK

CHECK

CHECK



- NOTE -
- △ MOUNTING HOLES WILL ACCEPT PINS OR SCREWS OF .139 MAX DIA ON 1.000 ± .002 CENTERS
  - 2 - TRAVEL CHARACTERISTICS ARE REFERENCED FROM THE UPPER SURFACE OF THE MOUNTING HOLES WITH THIS CONSTRUCTION
  - © 3 - FOR USE IN AMBIENT TEMPERATURES FROM MINUS 65°F TO PLUS 300°F

THIS DRAWING COVERS A PROPRIETARY ITEM AND IS THE PROPERTY OF MICRO SWITCH, A DIVISION OF MINNEAPOLIS-HONEYWELL REGULATOR CO. THIS DRAWING IS NOT TO BE COPIED OR USED WITHOUT THE APPROVAL OF MICRO SWITCH.

CHARACTERISTICS (TENTATIVE)	ELECTRICAL DATA			SCALE FULL
OPERATING FORCE ----- 10-30 OZ	CONTACT ARRANGEMENT S P D T			DO NOT SCALE PRINT
RELEASE FORCE ----- 4 OZ MIN	A B LINE VOLTAGE 28 VDC (SEA LEVEL-100,000 FT.) 125 VAC (SEA LEVEL-70,000 FT.)	C INDUCTIVE LOAD 8 AMP	D RESISTIVE LOAD 15 AMP 5 AMP	UNLESS OTHERWISE SPECIFIED DIMENSIONS ARE IN INCHES <b>TOLERANCES ARE:</b> ONE PLACE (.0) ±.030 TWO PLACE (.00) ±.015 THREE PLACE (.000) ±.008 ANGLES ±
DIFFERENTIAL TRAVEL ----- .020 MAX				
OVERTRAVEL ----- .010 MIN	L277 1A-125VAC, 5A-28VDC			
	AL SF			
	WEIGHT 1.6 OZ MAX			

FO-50378  
FORMTEK

DRAWN  
L M H 20 APR 61