

Description: 0605 Coupler

PART NUMBER: CPL0605LL15R2460A

**Features:**

- Compact size
- RoHS compliant

**Applications:**

- WLAN,802.11a/b/g/ax
- Dual Band 2.4/6 GHz

**ELECTRICAL SPECIFICATIONS**

DESCRIPTION	Value	
	Pass Band	2400~2500 MHz
Impedance	50Ω	
Insertion Loss (dB)	0.22 dB (Max.) at 25°C	0.32 dB (Max.) at 25°C
Return Loss (dB)	17.7 (Min.)	17.7 (Min.)
Coupling (dB)	24.5±1.0	17±2.0
Directivity (dB)	16 (Min.)	16 (Min.)
Operating Temperature	-40 ~ +125°C	
Power Capacity	2W max.	

In the effort to improve our products, we reserve the right to make changes judged to be necessary.

CONFIDENTIAL AND PROPRIETARY INFORMATION

This document contains confidential and proprietary information of Pulse Electronics, Inc. (Pulse) and is protected by copyright, trade secret and other state and federal laws. Its receipt or possession does not convey any rights to reproduce, disclose its contents, or to manufacture, use or sell anything it may describe. Reproduction, disclosure or use without specific written authorization of Pulse is strictly forbidden.

For more information:

Pulse Worldwide Headquarters  
15255 Innovation Drive #100  
San Diego, CA 92128  
USA  
Tel:1-858-674-8100

Pulse/Larsen Antennas  
18110 SE 34<sup>th</sup> St Bldg 2 Suite 250  
Vancouver, WA 98683  
USA  
Tel: 1-360-944-7551

Europe Headquarters  
Pulse GmbH & Do, KG  
Zeppelinstrasse 15  
Herrenberg, Germany  
Tel: 49 7032 7806 0

Pulse (Suzhou) Wireless Products Co, Inc.  
99 Huo Ju Road(#29 Bldg,4<sup>th</sup> Phase  
Suzhou New District  
Jiangsu Province, Suzhou 215009 PR China  
Tel: 86 512 6807 9998

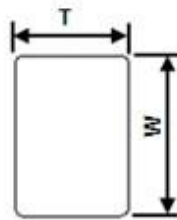
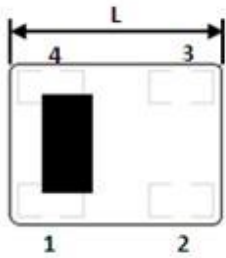


Description: 0605 Coupler

PART NUMBER: CPL0605LL15R2460A

MECHANICAL DIMENSION

Outline

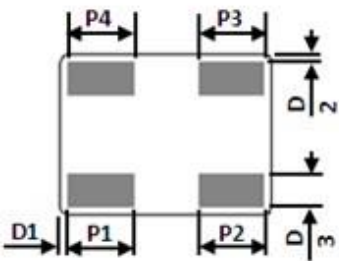


Termination

Terminal name	Function
1	Coupling
2	50 ohm terminal
3	Output
4	Input

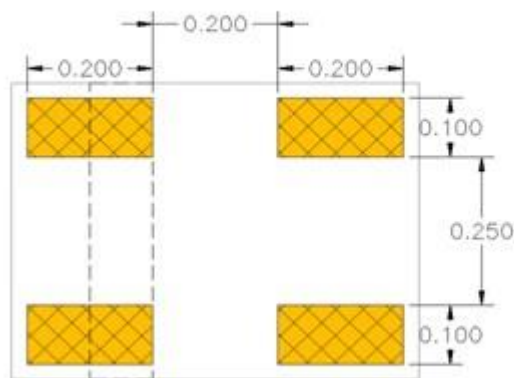
Mechanical

Dimension	Value
L (mm)	0.65±0.10
W (mm)	0.50±0.10
T (mm)	0.35±0.10
P1 (mm)	0.20±0.10
P2 (mm)	0.20±0.10
P3 (mm)	0.20±0.10
P4 (mm)	0.20±0.10
D1 (mm)	0.025±0.025
D2 (mm)	0.025±0.025
D3 (mm)	0.10±0.10

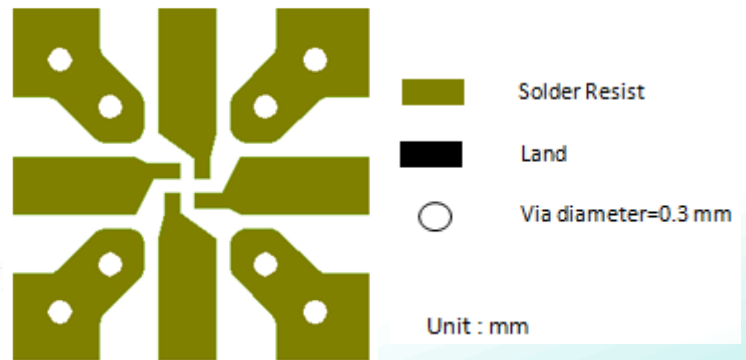


Reference design of EVB

Recommended Land Pattern



Recommended PCB Pattern



Line width should be designed to match 50Ω characteristic impedance, depending on PCB material and thickness.

In the effort to improve our products, we reserve the right to make changes judged to be necessary.

CONFIDENTIAL AND PROPRIETARY INFORMATION

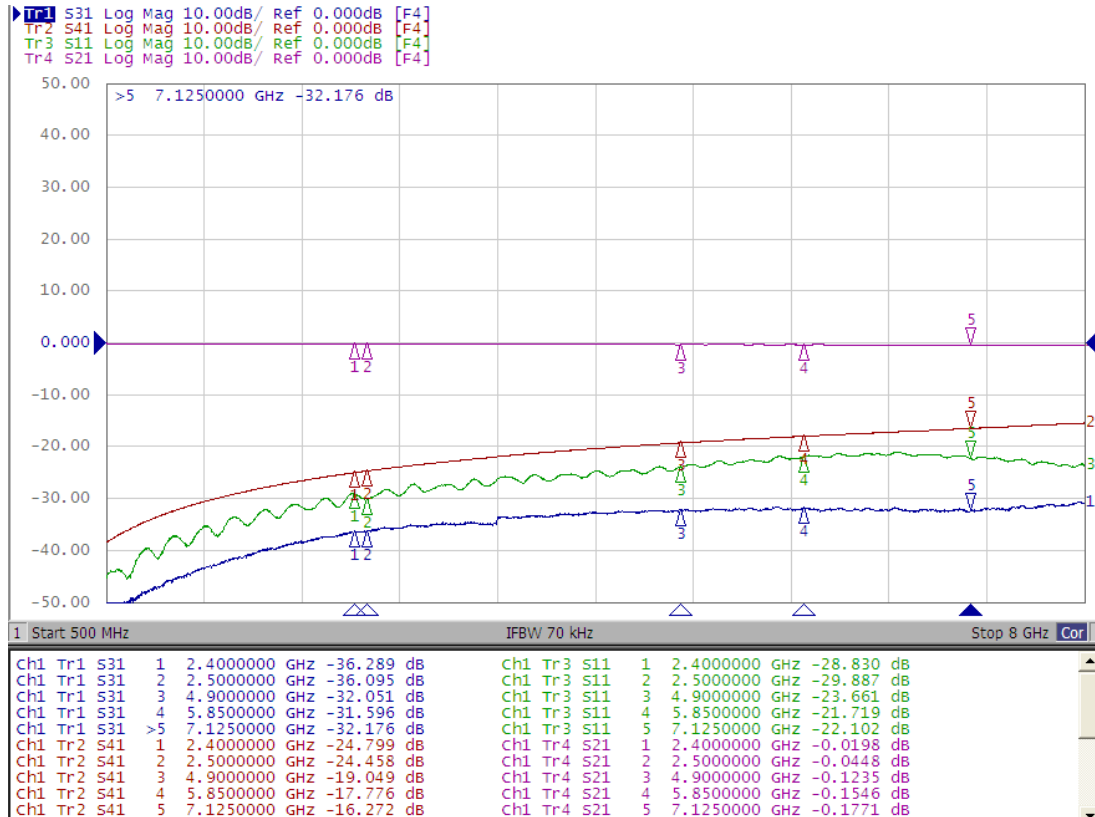
This document contains confidential and proprietary information of Pulse Electronics, Inc. (Pulse) and is protected by copyright, trade secret and other state and federal laws. Its receipt or possession does not convey any rights to reproduce, disclose its contents, or to manufacture, use or sell anything it may describe. Reproduction, disclosure or use without specific written authorization of Pulse is strictly forbidden.

Description: 0605 Coupler

PART NUMBER: CPL0605LL15R2460A

ELECTRICAL PERFORMANCES

Frequency Characteristics



- Measured on Agilent E5071C Network Analyzer
- Input port: Port 1 (Return loss: S11)
- Output port: Port 2 (Insertion loss: S21)
- Coupling port: Port 4 (Coupling: S41)
- 50 ohm terminal port: Port 3 (Isolation: S31)

Frequency Characteristics

Description: 0605 Coupler

PART NUMBER: CPL0605LL15R2460A

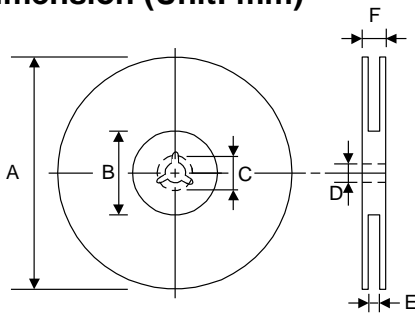
PACKING SPECIFICATION

Peel-off force



The force for peeling of cover tape is 10 grams in the arrow direction.

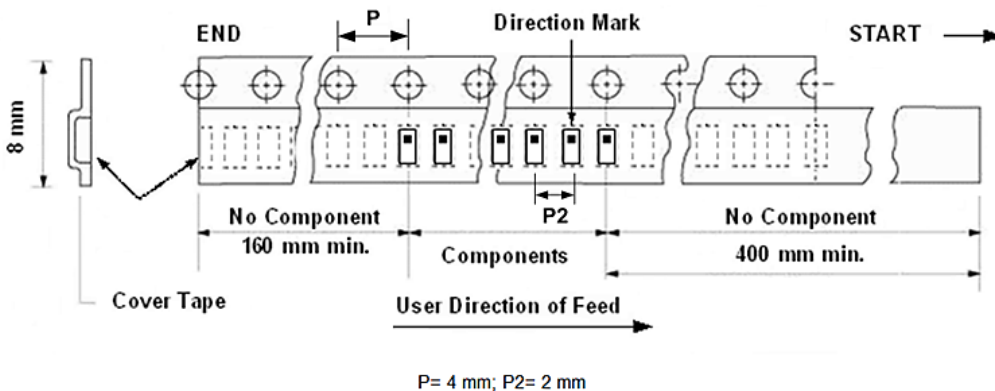
Dimension (Unit: mm)



TYPE	A	B	C	D	E	F
8 mm	178±1	60+0.5 -0	-	13±0.2	9±0.5	12±0.5
12 mm	178±0.3	60±0.2	19.3±0.1	13.5±0.1	13.6±0.1	-

Taping quantity

SERIES	5824 5724	5320 5220	4532	4516	3225	3216 2520	2012 1608	1005 0605
PCS/Reel	5000	3000	1000	2000	2500	3000	4000	10000



In the effort to improve our products, we reserve the right to make changes judged to be necessary.  
CONFIDENTIAL AND PROPRIETARY INFORMATION

This document contains confidential and proprietary information of Pulse Electronics, Inc. (Pulse) and is protected by copyright, trade secret and other state and federal laws. Its receipt or possession does not convey any rights to reproduce, disclose its contents, or to manufacture, use or sell anything it may describe. Reproduction, disclosure or use without specific written authorization of Pulse is strictly forbidden.

**Description: 0605 Coupler****PART NUMBER: CPL0605LL15R2460A****REVISION HISTORY**

Revision	Date	Description
Version 1	Mar. 23, 2021	- New issue