

## STANDARD

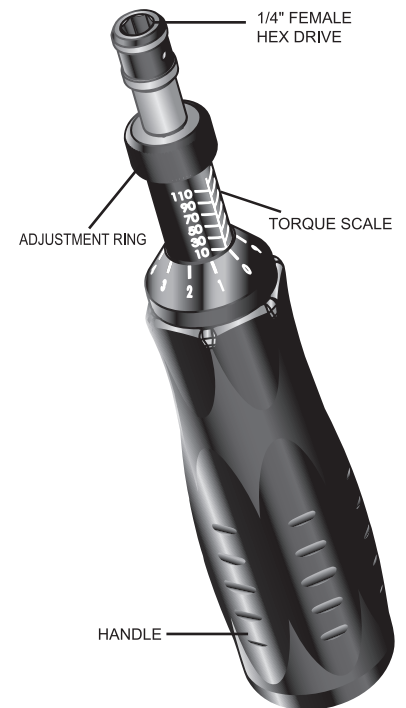
We calibrate each torque screwdriver at the factory using torque standards according to DIN ISO 6789 & ASME B107.300-2010, and certifies it meets the accuracy requirements of specifications DIN ISO 6789 and ASME B107.300-2010.

CONVERT FROM	TO	MULTIPLY BY
ozf-in	lbf-in	0.0625
lbf-in	ozf-in	16
lbf-in	kgf-cm	1.1519
lbf-in	lbf-ft	0.083333
lbf-in	kgf-m	0.011519
lbf-in	N-m	0.1130
lbf-in	dN-m	1.130
lbf-ft	N-m	1.356
lbf-ft	kgf-m	0.1382
lbf-ft	lbf-in	12
N-m	dN-m	10
N-m	kgf-cm	10.20
N-m	kgf-m	0.10197
N-m	lbf-in	8.8507
N-m	lbf-ft	0.73756
dN-m	lbf-in	0.885
dN-m	N-m	0.100
kgf-cm	lbf-in	0.8681
kgf-cm	N-m	0.09807
kgf-m	lbf-ft	7.233
kgf-m	N-m	9.807

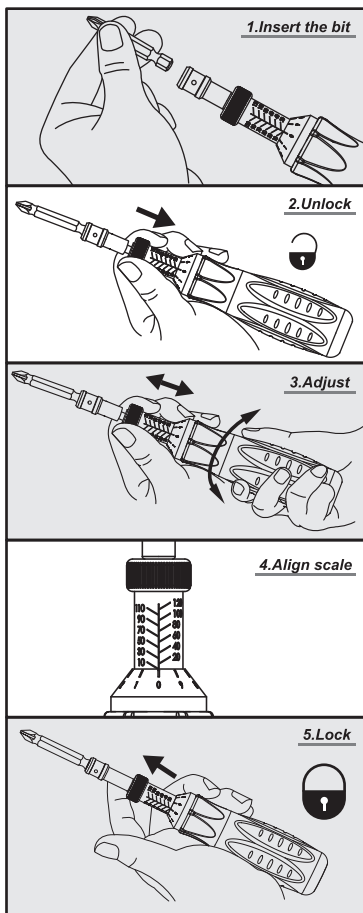
# multicomp<sup>PRO</sup>

## TORQUE SCREWDRIVER

### INSTRUCTION MANUAL



## OPERATION



## SAFETY INSTRUCTIONS



**WARNING**  
**RISK OF FLYING PARTICLES**



**ALWAYS USE EYE PROTECTION**  
**WHILE USING HAND TOOLS**



**INJURY MAY RESULT FROM**  
**ELECTRICAL SHOCK**

- THE TORQUE SCREWDRIVER MAY ONLY BE USED TO TIGHTEN SCREWS AND NUTS AND NOT USED TO UNDO ALREADY TIGHTENED ITEMS.
- THE TORQUE SCREWDRIVER ONLY FUNCTIONS IN CLOCKWISE DIRECTION.
- DO NOT USE THE SCREWDRIVER AS A LEVER OR AS A HAMMER.
- DO NOT USE IF DAMAGED AS IT MAY CAUSE INJURY TO THE USER.
- DO NOT USE EXTENSION BARS WITH THE SCREWDRIVER OR DAMAGE MAY OCCUR.
- ENSURE THE CALIBRATION IS ACCURATE AS OTHERWISE OVER TIGHTENING OF THE SCREWS BEING USED MAY OCCUR RESULTING IN BREAKAGE.
- ALWAYS USE RELEVANT PPE EQUIPMENT WHEN USING TOOLS.
- THE TORQUE SCREWDRIVER HANDLE IS NOT INSULATED AND MUST NEVER BE USED ON LIVE ELECTRICAL COMPONENTS.

## CARE AND MAINTENANCE

- The torque screwdriver is a precision instrument and should never be subject to impact or used as a lever.
- The torque screwdriver is lubricated for life and should not be oiled, except for the ratchet head which may be lubricated to maintain smooth operation.
- This is a precision instrument and requires calibration to be checked at a period of approximately 12 months or less depending on usage.
- Always store the screwdriver in its box when not in use to keep from dirt and humidity and set the torque value to the minimum setting.
- Do not disassemble the screwdriver, there are no user serviceable parts inside. Any incorrect disassembly may damage the product and affect the reliability and calibration. Seek assistance from a qualified service engineer.
- The calibration can only be carried out by an authorized workshop.