

CT series

Sealed toggle switches



DISTINCTIVE FEATURES

- Completely sealed switching chamber
- Three types of terminals
- UL approved



ENVIRONMENTAL SPECIFICATIONS

- Front sealing to IP67
- Operating temperature : -40 °C to + 85 °C (-40 °F to +185 °F)



ELECTRICAL SPECIFICATIONS

- Max. current/voltage rating with resistive load and electrical life at full load: see table below
- Initial contact resistance : 50 mΩ max.
- Insulation resistance : 1,000 MΩ min. at 500 VDC
- Dielectric strength : 2,500 Vrms 50 Hz min. between terminals
3,000 Vrms 50 Hz min. between terminals and frame

ELECTRICAL RATING AND LIFE		
FUNCTIONS	DIRECT CURRENT	UL
ON-OFF and ON-ON	10,000 cycles 15 A 28 VDC resistive 5 A 28 VDC lamp load	10 A 125/250 VAC according to UL 61058-1 and CAN/ CSA-C22.2 NO. 61058-1:17
OTHER FUNCTIONS	10,000 cycles 15 A 28 VDC resistive 3 A 28 VDC lamp load	



GENERAL SPECIFICATIONS

- Mechanical life : 40,000 cycles
- Torque : 2 Nm (1.47 Ft.lb) max. applied to nut
- Panel thickness : see "Mounting Accessories" on the following pages

The company reserves the right to change specifications without notice.



CT series

Sealed toggle switches

MATERIALS

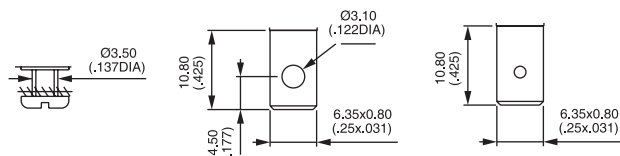
- Case : phenolic resin UL94-V0
- Bushing and cover : zamac
- Actuator : bright nickel or Polyamid
- Contacts : silver alloy

AGENCY APPROVAL



Availability : consult factory for details of approved models.
Marking : to order switches marked UL, complete appropriate box of ordering format.

TERMINALS

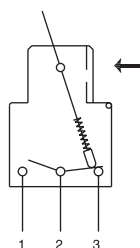


Screw* Solder lug/quick connect Normalized quick-connect

*Screw terminals are not mounted, but supplied separately.

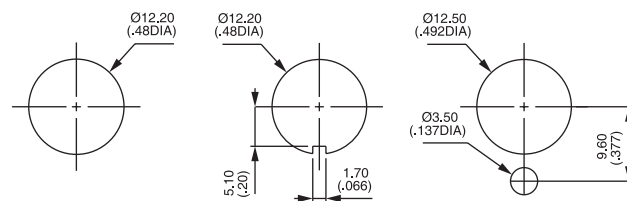
ELECTRICAL FUNCTIONS

→ KEYWAY



PANEL CUT-OUT

See "mounting accessories" on the following pages.



CT series

Sealed toggle switches



BUILD YOUR PART NUMBER

BASIC PART NUMBER											
SERIES	NUMBER OF POLES	ELECTRICAL FUNCTIONS						TERMINALS*			
CT	3 Single pole	1-0	ON	-	OFF	5-0	ON	-	MOM	0	Screw**
	4 Double pole	2-0	ON	-	m.OFF	6-0	ON	-	ON	2	Solder lug/ quick-connect
		3-0	OFF	-	MOM	7-0	MOM	OFF	MOM	3	Normalized quick-connect
		4-1	ON	³ ON ⁴	ON ▲	8-0	ON	OFF	MOM		
		4-2	ON	³ ON ⁴	MOM ▲	9-0	ON	OFF	ON		
		4-3	MOM	³ ON ⁴	MOM ▲	▲ Function 4 : double pole only					

OPTIONS				
LEVER STYLES	LEVER FINISH	LEVER LOCKING	AGENCY APPROVAL	ACCESSORIES
1 Standard, length 17.5 mm (.688)	N Bright nickel, for lever 1	0 No locking	0 None	0 2 hex nuts, 1 locking ring and 1 lockwasher
9 Plastic paddle, length 22.7 mm (.893)	2 Black, for lever 9		2 UL	2 2 hex nuts and 1 sealing washer
	4 Grey, for lever 9			
	5 Yellow, for lever 9			



ABOUT THIS SERIES

On the following pages, you will find successively basic part numbers of switches and options in the same order as in above chart.

- ⚠ **Notice** : please note that not all combinations of above numbers are available. Refer to the following pages for further information.
- 🔒 **Switch guards** are available to prevent inadvertent lever operation. On request.
- 🔩 **Mounting accessories** : see above and on the following page

*Packaging unit : 25 pieces for screw terminals (0) ; 15 pieces for solder lug (2) or normalized quick connect terminals (3)

**Screw terminals are not mounted but supplied separately.

CT series

Sealed toggle switches

SCREW TERMINALS SINGLE POLE



	Angle of throw (A)	III A2-A3	II	I A1-A2
CT31-00	22°	ON	-	OFF
CT32-00	22°	ON	-	m.OFF
CT33-00	22°	OFF	-	MOM
CT35-00	22°	ON	-	MOM
CT36-00	22°	ON	-	ON
CT37-00	30°	MOM	OFF	MOM
CT38-00	30°	ON	OFF	MOM
CT39-00	30°	ON	OFF	ON

SCREW TERMINALS DOUBLE POLE



	Angle of throw (A)	III A2-A3 B5-B6	II *A3-B5 **A1-B5	I A1-A2 B5-B4
CT41-00	22°	ON	-	OFF
CT44-10	30°	ON	ON*	ON
CT44-20	30°	ON	ON*	MOM
CT44-30	30°	MOM	ON*	MOM
CT45-00	22°	ON	-	MOM
CT46-00	22°	ON	-	ON
CT47-00	30°	MOM	OFF	MOM
CT48-00	30°	ON	OFF	MOM
CT49-00	30°	ON	OFF	ON

SOLDER LUG/QUICK-CONNECT TERMINALS SINGLE POLE



	Angle of throw (A)	III A2-A3	II	I A1-A2
CT31-02	22°	ON	-	OFF
CT32-02	22°	ON	-	m.OFF
CT33-02	22°	OFF	-	MOM
CT35-02	22°	ON	-	MOM
CT36-02	22°	ON	-	ON
CT37-02	30°	MOM	OFF	MOM
CT38-02	30°	ON	OFF	MOM
CT39-02	30°	ON	OFF	ON

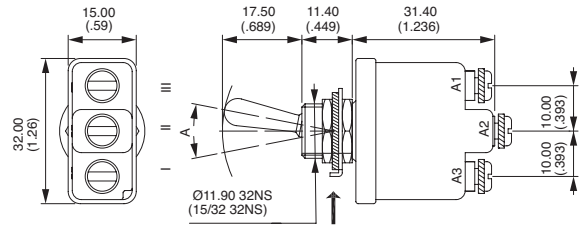
SOLDER LUG/QUICK-CONNECT TERMINALS DOUBLE POLE



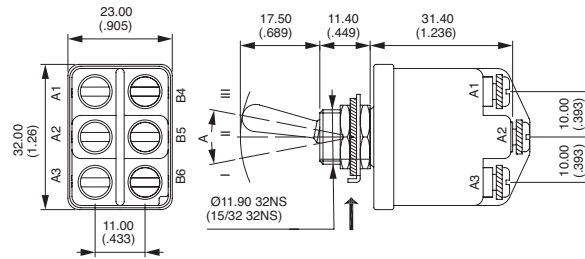
	Angle of throw (A)	III A2-A3 B5-B6	II *A3-B5 **A1-B5	I A1-A2 B5-B4
CT41-02	22°	ON	-	OFF
CT44-12	30°	ON	ON*	ON
CT44-22	30°	ON	ON*	MOM
CT44-32	30°	MOM	ON*	MOM
CT45-02	22°	ON	-	MOM
CT46-02	22°	ON	-	ON
CT47-02	30°	MOM	OFF	MOM
CT48-02	30°	ON	OFF	MOM
CT49-02	30°	ON	OFF	ON

→ KEYWAY

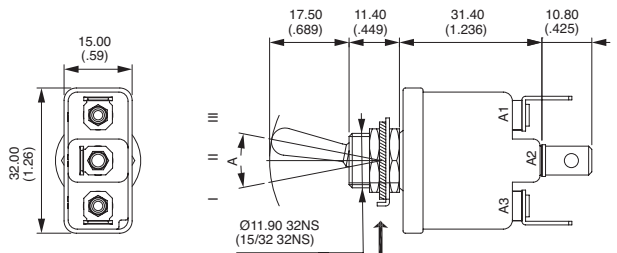
Shown with standard lever



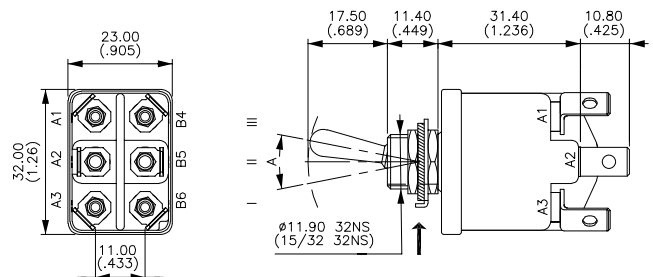
→ KEYWAY



→ KEYWAY



→ KEYWAY



*and** : A2-B4 and A2-B6 = jumper to be wired by the user.

CT series

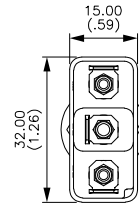
Sealed toggle switches

NORMALIZED QUICK-CONNECT TERMINALS SINGLE POLE

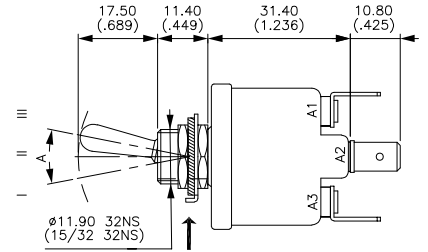


	Angle of throw (A)	III A2-A3	II	I A1-A2
CT31-03	22°	ON	-	OFF
CT32-03	22°	ON	-	m.OFF
CT33-03	22°	OFF	-	MOM
CT35-03	22°	ON	-	MOM
CT36-03	22°	ON	-	ON
CT37-03	30°	MOM	OFF	MOM
CT38-03	30°	ON	OFF	MOM
CT39-03	30°	ON	OFF	ON

→ KEYWAY



Shown with standard lever

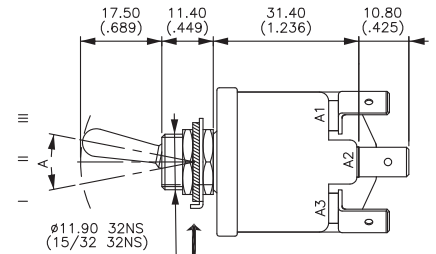
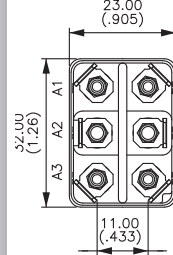


NORMALIZED QUICK-CONNECT TERMINALS DOUBLE POLE



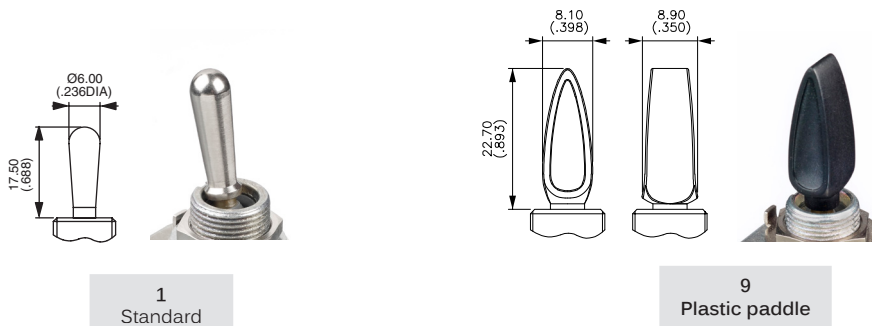
	Angle of throw (A)	III A2-A3 B5-B6	II *A3-B5 **A1-B5	I A1-A2 B5-B4
CT41-03	22°	ON	-	OFF
CT44-13	30°	ON	ON*	ON
CT44-23	30°	ON	ON*	MOM
CT44-33	30°	MOM	ON*	MOM
CT45-03	22°	ON	-	MOM
CT46-03	22°	ON	-	ON
CT47-03	30°	MOM	OFF	MOM
CT48-03	30°	ON	OFF	MOM
CT49-03	30°	ON	OFF	ON

→ KEYWAY



*and**: A2-B4 and A2-B6 = jumper to be wired by the user.

LEVER STYLES



1
Standard

9
Plastic paddle

LEVER FINISH



- N Bright nickel (for lever 1 only)
- 2 Black (for lever 9 only)
- 4 Grey (for lever 9 only)
- 5 Yellow (for lever 9 only)

CT series

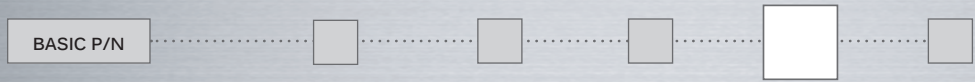
Sealed toggle switches

LOCKING LEVER STYLES



0 No locking

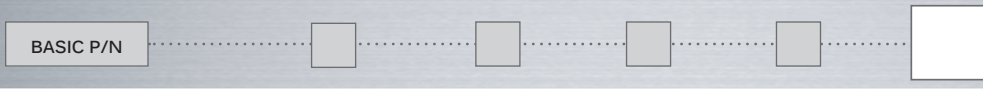
AGENCY APPROVAL



0 None
2 UL

APEM has the ability to develop custom configurations. Please contact us with your requirements.

MOUNTING ACCESSORIES



- 0 For NON-SEALED mounting (panel cut-out fig. 1, 2 or 3)
2 hex nuts 14 mm (.551) across flats, 1 locking ring U121 or U12, 1 lockwasher U13
Panel thickness : 5 mm (.196) max.
- 2 For SEALED mounting (panel cut-out fig. 2)
2 hex nuts 14 mm (.551) across flats and 1 sealing washer U60
Panel thickness : 4 mm (.157) max.

Special hardware : black cap nut U129. Order separately. See "Hardware" section of website.

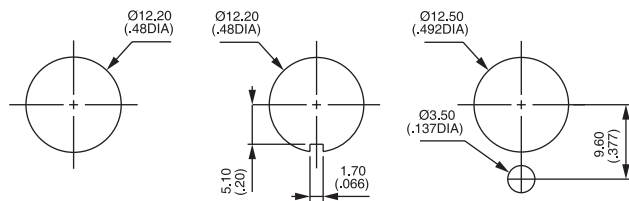


Figure 1

Figure 2

Figure 3