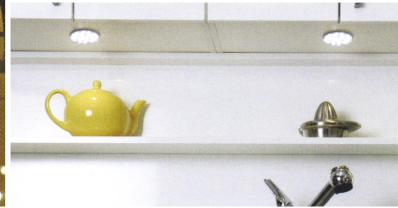
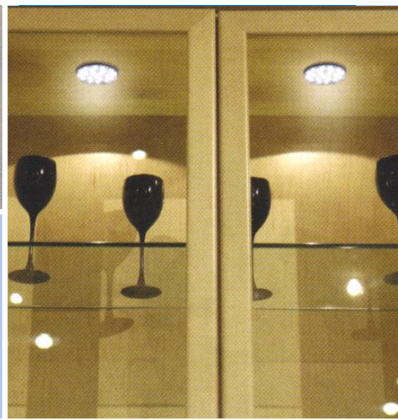
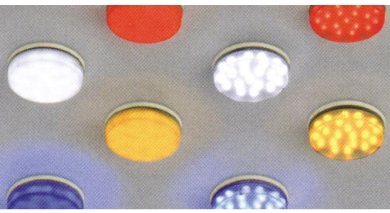


acsentio

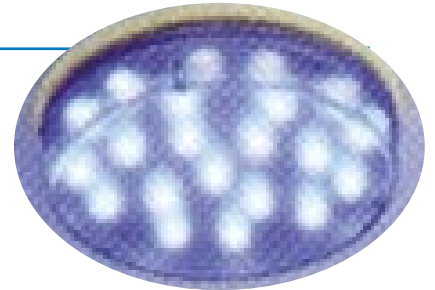
acsentio





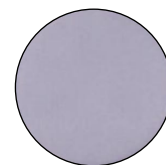
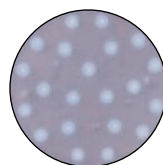
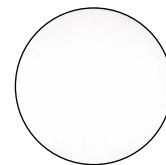
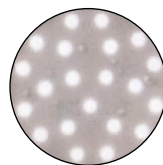
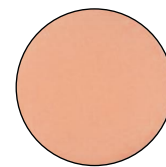
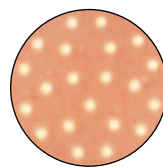
## Acsentio - accent lighting with LED

A revolutionary range of subtly colored LED powered light units each containing 21 individual LEDs. Operates on 12V or 24V with mains versions also available, as part of CML-ITs connect & glo program no transformers or special connectors are required using the standard fitting, just connect & glo. Available in red, white, blue, green & amber in both clear and satin finish



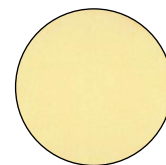
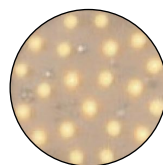
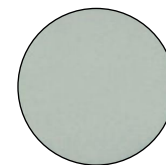
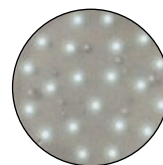
### Features

- Integral electronic transformer
- GX53 lampholder
- Voltage 12, 24, 240 V
- Power 1.5 watt
- Life - 50,000 hours
- Integral electronic transformer



### Applications

- Accent lighting
- Furniture lighting
- Display lighting
- Path lighting
- Marine lighting





# Acsentio - connect & glo



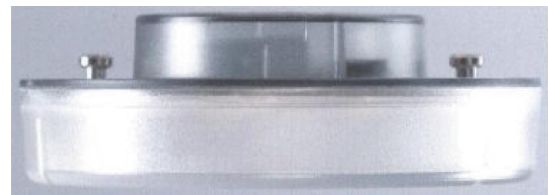
Part No.	Voltage	Color	Clear/Satin
CML12BS	12V	Blue	Satin
CML12BC	12V	Blue	Clear
CML12WS	12V	White	Satin
CML12WC	12V	White	Clear
CML12RS	12V	Red	Satin
CML12RC	12V	Red	Clear
CML12GS	12V	Green	Satin
CML12GC	12V	Green	Clear
CML12YS	12V	Yellow	Satin
CML12YC	12V	Yellow	Clear
CML24BS	24V	Blue	Satin
CML24BC	24V	Blue	Clear
CML24WS	24V	White	Satin
CML24WC	24V	White	Clear
CML24RS	24V	Red	Satin
CML24RC	24V	Red	Clear
CML24GS	24V	Green	Satin
CML24GC	24V	Green	Clear
CML24YS	24V	Yellow	Satin
CML24YC	24V	Yellow	Clear
CML240BS	240V	Blue	Satin
CML240BC	240V	Blue	Clear
CML240WS	240V	White	Satin
CML240WC	240V	White	Clear
CML240RS	240V	Red	Satin
CML240RC	240V	Red	Clear
CML240GS	240V	Green	Satin
CML240GC	240V	Green	Clear
CML240YS	240V	Yellow	Satin
CML240YC	240V	Yellow	Clear

## Acsentio Mounting Bracket

- GX53 lampholder
- Flat construction
- Easy replacement
- Twin push terminals
- Mount with M3 screw



Available from  
[www.bjb.com](http://www.bjb.com)  
 BJB part - 26.750





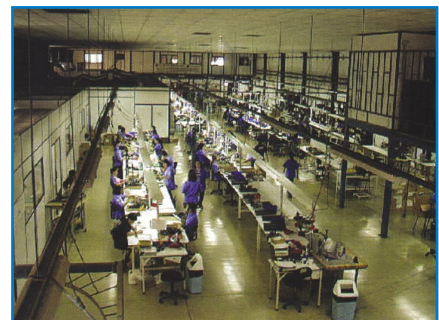
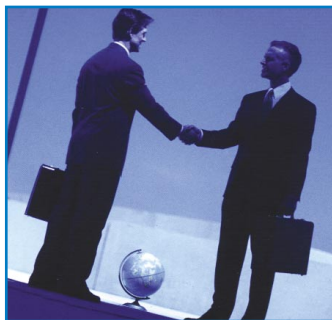
## What else can CML offer?

CMLs R&D is located worldwide. Our R&D centres in America, Asia and Europe collaborate to offer world class technology. Engineers from Guangzhou, Singapore, Bamberg, Bad Dürkheim, Besancon, Hackensack and New York collaborate to bring world class solutions to the market.

Our Corporate headquarters in Hackensack, NJ is an FAA accredited Aerospace facility providing lighting systems to Airlines and Aircraft builders in USA and across the globe.



Our low cost manufacturing centres in Costa Rica, China and the Czech Republic provide a 'local' manufacturing facility to meet our customers supply chain needs.



**we make LEDs easy...**  
[www.cml-it.com](http://www.cml-it.com)