

Green Beams

User Manual



Part Number: MP701118

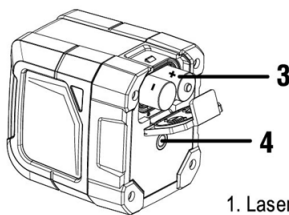
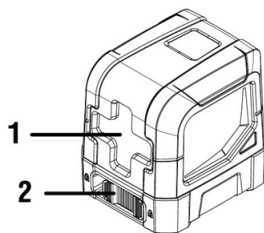
Contents

Congratulations!

You have chosen one of our laser tools that's guaranteed reliable and tough for professional tool users at various job sites.

- Safety
- Product Overview
- Operation Modes
- Applications • User Guide, Maintenance and Care
- Specifications

Product Overview



1. Laser Window
2. Power/Lock
3. Battery Compartment
4. 1/4-20 Mounting Thread

Safety WARNING:

- Read the Safety Instructions and User Manual thoroughly before using this product. All users must fully understand and adhere to these instructions.
- **CAUTION:** • While the product is in operation, be careful not to expose your eyes to the emitting laser beam (red or green light source). Exposure to a laser beam for an extended time may be hazardous to your eyes.
- **CAUTION:** • Glasses may be supplied in some of the laser tool kits. These are NOT certified safety glasses. These glasses are ONLY used to enhance visibility of beam in brighter environments or at greater distances from laser source.
- **WARNING:** • The following label/print samples are placed on the product to inform of the laser class for your convenience and safety.



IEC/EN 60825-1:2007



- Do not stare directly into the beam or view directly with optical instruments or set up the laser at eye level.
- Do not disassemble the laser tool. There are no user serviceable parts inside.
- Do not modify the laser in any way. Modifying the tool may result in hazardous Laser Radiation Exposure.
- Do not operate the laser around children or allow children to operate the laser. Serious eye injury may result.
- An exposure to the beam of a Class 2 laser is considered safe for a maximum of 0.25 seconds. Eyelid reflexes will normally provide adequate protection.

Operation Modes

General Notes:

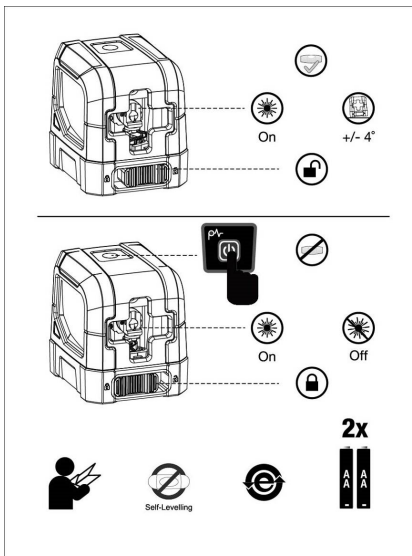
- Press or slide locking switch to turn laser tool ON; short press to turn laser tool OFF when the laser tool is locked with pendulum.

Self-leveling Mode

- is enabled when the laser tool is switched to the unlocked position.
- has laser beam(s) blink fast at 2 Hz when tool is out of self-leveling range.
- allows proper use of tool's full time pulse mode with laser detector.

Manual Mode

- is enabled when the pendulum lock is in its locked position to position the laser tool at various angles to project non-level straight lines.
- disables self-leveling operations; Accuracy of the beam(s) is not guaranteed to be level, and laser beam(s) will blink about every 5 seconds.



Important Notice : This data sheet and its contents (the "Information") belong to the members of the AVNET group of companies (the "Group") or are licensed to it. No licence is granted for the use of it other than for information purposes in connection with the products to which it relates. No licence of any intellectual property rights is granted. The Information is subject to change without notice and replaces all data sheets previously supplied. The Information supplied is believed to be accurate but the Group assumes no responsibility for its accuracy or completeness, any error in or omission from it or for any use made of it. Users of this data sheet should check for themselves the Information and the suitability of the products for their purpose and not make any assumptions based on information included or omitted. Liability for loss or damage resulting from any reliance on the Information or use of it (including liability resulting from negligence or where the Group was aware of the possibility of such loss or damage arising) is excluded. This will not operate to limit or restrict the Group's liability for death or personal injury resulting from its negligence. Multicomp Pro is the registered trademark of Premier Farnell Limited 2019.