



Pushing Performance  
Since 1945

# Han HV single module, 16A 2500V female

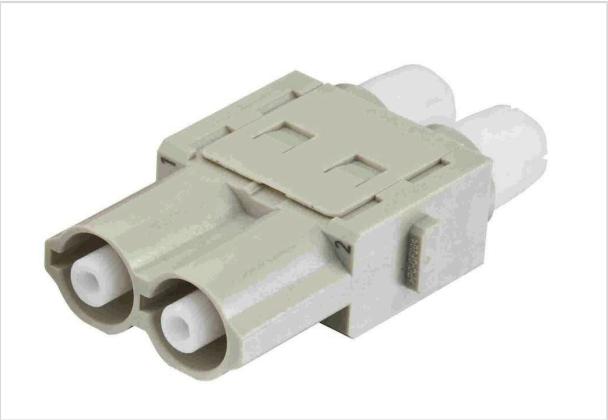


Image is for illustration purposes only. Please refer to product description.

Part number	09 14 002 3125
Specification	Han HV single module, 16A 2500V female
HARTING eCatalogue	<a href="https://b2b.harting.com/09140023125">https://b2b.harting.com/09140023125</a>

## Identification

Category	Modules
Series	Han-Modular®
Type of module	Han® HV module
Size of the module	Single module

## Version

Termination method	Crimp termination
Gender	Female
Number of contacts	2
Details	Please order crimp contacts separately.
Pack contents	1 module 2 locking sleeves 2 heat shrink tubes

## Technical characteristics

Conductor cross-section	0.14 ... 4 mm²
Wire outer diameter	≤5 mm
Rated current	16 A
Rated voltage	2,500 V
Rated impulse voltage	15 kV
Pollution degree	3
Insulation resistance	>10 <sup>10</sup> Ω
Limiting temperature	-40 ... +125 °C



**Pushing Performance**  
Since 1945

## Technical characteristics

Mating cycles	≥500
---------------	------

## Material properties

Material (insert)	Polycarbonate / Teflon (PTFE)
Colour (insert)	RAL 7032 (pebble grey)
Material flammability class acc. to UL 94	V-0
RoHS	compliant with exemption
RoHS exemptions	6(c): Copper alloy containing up to 4 % lead by weight
ELV status	compliant with exemption
China RoHS	50
REACH Annex XVII substances	Not contained
REACH ANNEX XIV substances	Not contained
REACH SVHC substances	Yes
REACH SVHC substances	Lead
ECHA SCIP number	5dbb3851-b94e-4e88-97a1-571845975242
California Proposition 65 substances	Yes
California Proposition 65 substances	Lead
Fire protection on railway vehicles	EN 45545-2 (2020-08)
Requirement set with Hazard Levels	R22 (HL 1-3) R23 (HL 1-3)

## Specifications and approvals

Specifications	IEC 60664-1
	IEC 61984
	EN 50124-1
Approvals	DNV GL

## Commercial data

Packaging size	1
Net weight	31 g
Country of origin	Germany
European customs tariff number	85389099
GTIN	5713140019942
ETIM	EC000438



**Pushing Performance**  
Since 1945

## Commercial data

eCl@ss

27440217 Module for industrial connectors (power/signals)