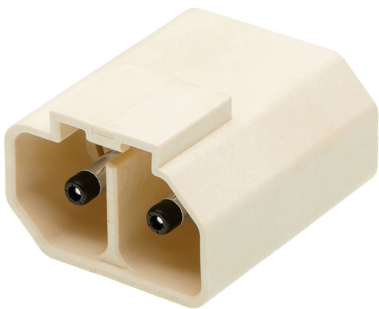




Part Number : [2218873322](#)
Product Description : PowerWize 3.40mm, 2-circuit, Solder Tail, Mechanical Keying Option 2, Color Coded Natural, Right Angle Header, Tray
Series Number : 221887
Status : Active
Product Category : PCB Headers and Receptacles



Documents & Resources


Drawings
[2218873322_sd.pdf](#)
[2218873321-PK-000.pdf](#)

3D Models and Design Files
[2218873322_stp.zip](#)

Specifications
[2215971000-AS-000.pdf](#)
[2215970001-PS-000.pdf](#)
[2215973000-TS-000.pdf](#)

Product Environment Compliance

Compliance

GADSL/IMDS	Not Relevant
China RoHS	
EU ELV	Not Relevant
Low-Halogen Status	Low-Halogen per IEC 61249-2-21
REACH SVHC	Not Contained per D(2024)7663-DC (21 Jan 2025)
EU RoHS	Compliant per EU 2015/863

Multiple Part Product Compliance Statements
- Eu RoHS
- REACH SVHC
- Low-Halogen

Multiple Part Industry Compliance Documents

- IPC 1752A Class C
- IPC 1752A Class D
- Molex Product Compliance Declaration
- IEC-62474
- chemSHERPA (xml)

EU RoHS Certificate of Compliance

Part Details

General

Status	Active
Category	PCB Headers and Receptacles
Series	221887
Description	PowerWize 3.40mm, 2-circuit, Solder Tail, Mechanical Keying Option 2, Color Coded Natural, Right Angle Header, Tray
Application	Power, Wire-to-Board
Component Type	PCB Header
Product Name	PowerWize
UPC	196823670947

Electrical

Current - Maximum per Contact	65.0A
Voltage - Maximum	600V

Physical

Breakaway	No
Circuits (Loaded)	2
Circuits (maximum)	2
Color - Resin	Natural
Diameter	3.40mm
Durability (mating cycles max)	200
Glow-Wire Capable	No
Keying to Mating Part	Yes
Lock to Mating Part	Yes
Material - Metal	Copper Alloy

Material - Plating Mating	Silver
Material - Plating Termination	Silver
Material - Resin	Liquid Crystal Polymer
Net Weight	14.420/g
Number of Rows	1
Orientation	Right Angle
Packaging Type	Tray
Pitch - Mating Interface	11.00mm
Polarized to Mating Part	Yes
Polarized to PCB	Yes
Temperature Range - Operating	-40° to +125°C
Termination Interface Style	Pin-in-Paste SMT

Mates With / Use With

Mates with Part(s)

Description	Part Number
PowerWize 3.40mm, 2-circuit, Mechanical Keying Option 2, Color Coded Natural, Receptacle Housing, Bag	<u>2215973002</u>

Use with Part(s)

Description	Part Number
	<u>221616</u>