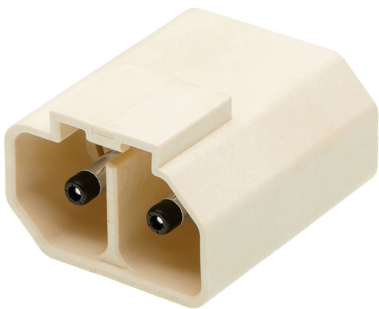




Part Number : [2218873322](#)
Product Description : PowerWize 3.40mm, 2-circuit, Solder Tail, Mechanical Keying Option 2, Color Coded Natural, Right Angle Header, Tray
Series Number : 221887
Status : Active
Product Category : PCB Headers and Receptacles



Documents & Resources

Drawings
[2218873322_sd.pdf](#)
[2218873321-PK-000.pdf](#)

3D Models and Design Files
[2218873322_stp.zip](#)

Specifications
[2215971000-AS-000.pdf](#)
[2215970001-PS-000.pdf](#)
[2215973000-TS-000.pdf](#)

Product Environment Compliance

Compliance

| | |
|--------------------|--|
| GADSL/IMDS | Not Relevant |
| China RoHS | |
| EU ELV | Not Relevant |
| Low-Halogen Status | Low-Halogen per IEC 61249-2-21 |
| REACH SVHC | Not Contained per D(2024)7663-DC (21 Jan 2025) |
| EU RoHS | Compliant per EU 2015/863 |

Multiple Part Product Compliance Statements
- Eu RoHS
- REACH SVHC
- Low-Halogen

Multiple Part Industry Compliance Documents

- IPC 1752A Class C
- IPC 1752A Class D
- Molex Product Compliance Declaration
- IEC-62474
- chemSHERPA (xml)

EU RoHS Certificate of Compliance

Part Details

General

| | |
|----------------|---|
| Status | Active |
| Category | PCB Headers and Receptacles |
| Series | 221887 |
| Description | PowerWize 3.40mm, 2-circuit, Solder Tail, Mechanical Keying Option 2, Color Coded Natural, Right Angle Header, Tray |
| Application | Power, Wire-to-Board |
| Component Type | PCB Header |
| Product Name | PowerWize |
| UPC | 196823670947 |

Electrical

| | |
|-------------------------------|-------|
| Current - Maximum per Contact | 65.0A |
| Voltage - Maximum | 600V |

Physical

| | |
|--------------------------------|--------------|
| Breakaway | No |
| Circuits (Loaded) | 2 |
| Circuits (maximum) | 2 |
| Color - Resin | Natural |
| Diameter | 3.40mm |
| Durability (mating cycles max) | 200 |
| Glow-Wire Capable | No |
| Keying to Mating Part | Yes |
| Lock to Mating Part | Yes |
| Material - Metal | Copper Alloy |

| | |
|--------------------------------|------------------------|
| Material - Plating Mating | Silver |
| Material - Plating Termination | Silver |
| Material - Resin | Liquid Crystal Polymer |
| Net Weight | 14.420/g |
| Number of Rows | 1 |
| Orientation | Right Angle |
| Packaging Type | Tray |
| Pitch - Mating Interface | 11.00mm |
| Polarized to Mating Part | Yes |
| Polarized to PCB | Yes |
| Temperature Range - Operating | -40° to +125°C |
| Termination Interface Style | Pin-in-Paste SMT |

Mates With / Use With

Mates with Part(s)

| Description | Part Number |
|--|-------------------|
| PowerWize 3.40mm, 2-circuit, Solder Tail, Mechanical Keying Option 2, Color Coded Natural, Right Angle Header, Tray | <u>2218873322</u> |
| PowerWize 3.40mm, 2-circuit, Solder Tail, Mechanical Keying Option 2, Color Coded Natural, Vertical Header, Tray | <u>2218883322</u> |

Use with Part(s)

| Description | Part Number |
|-------------|---------------|
| | <u>221616</u> |