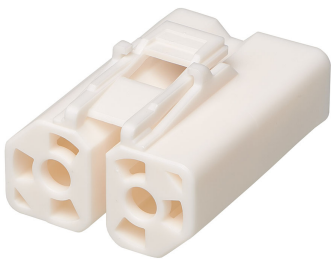




Part Number : [2215973002](#)
Product Description : PowerWize 3.40mm, 2-circuit, Mechanical Keying Option 2, Color Coded Natural, Receptacle Housing, Bag
Series Number : 221597
Status : Active
Product Category : Connector Housings



Documents & Resources

Drawings
[2215973002_sd.pdf](#)
[2215973001-PK-000.pdf](#)

3D Models and Design Files
[2215973002_stp.zip](#)

Specifications
[2215971000-AS-000.pdf](#)
[2215970001-PS-000.pdf](#)
[2215973000-TS-000.pdf](#)

Product Environment Compliance

Compliance

GADSL/IMDS	Not Relevant
China RoHS	
EU ELV	Not Relevant
Low-Halogen Status	Low-Halogen per IEC 61249-2-21
REACH SVHC	Not Contained per D(2024)7663-DC (21 Jan 2025)
EU RoHS	Compliant per EU 2015/863

Multiple Part Product Compliance Statements
- Eu RoHS
- REACH SVHC
- Low-Halogen

Multiple Part Industry Compliance Documents
- IPC 1752A Class C

- IPC 1752A Class D
- Molex Product Compliance Declaration
- IEC-62474
- chemSHERPA (xml)

EU RoHS Certificate of Compliance

Part Details

General

Status	Active
Category	Connector Housings
Series	221597
Description	PowerWize 3.40mm, 2-circuit, Mechanical Keying Option 2, Color Coded Natural, Receptacle Housing, Bag
Application	Power, Wire-to-Board
Product Name	PowerWize
UPC	196823670978

Physical

Circuits (maximum)	2
Color - Resin	Natural
Diameter	3.40mm
Gender	Receptacle
Glow-Wire Capable	No
Keying to Mating Part	Yes
Lock to Mating Part	Yes
Material - Resin	PBT
Net Weight	6.740/g
Number of Rows	1
Packaging Type	Bag
Panel Mount	N/A
Pitch - Mating Interface	11.00mm
Polarized to Mating Part	Yes
Temperature Range - Operating	-40° to +125°C

Mates With / Use With

Mates with Part(s)

Description	Part Number
PowerWize 3.40mm, 2-circuit, Solder Tail, Mechanical Keying Option 2, Color Coded Natural, Right Angle Header, Tray	<u>2218873322</u>
PowerWize 3.40mm, 2-circuit, Solder Tail, Mechanical Keying Option 2, Color Coded Natural, Vertical Header, Tray	<u>2218883322</u>

Use with Part(s)

Description	Part Number
	<u>221616</u>

Application Tooling

Global

Description	Part Number
Tool for Extraction of PowerWize 3.4 Crimp Terminals from Receptacle Housing, 10-8 AWG	<u>2002223300</u>