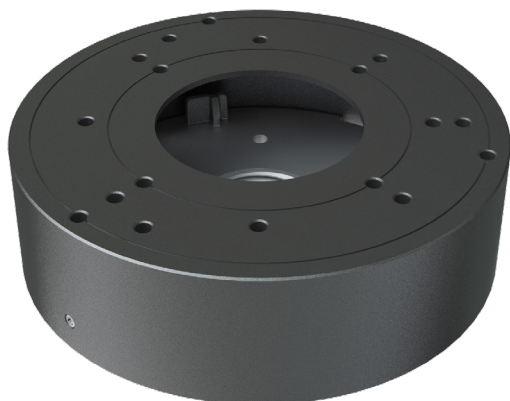


# RING CABLE MANAGEMENT

PART CODE: NDA-RING-04-GR



## FEATURES

- Aluminum alloy material with surface spray treatment
- Camera cables can be perfectly collected to the junction box so that the installation looks more elegant
- Bottom inlet and side inlet
- Available for wall or ceiling mounting
- Dust-proof design

## SPECIFICATIONS

Material	Aluminum alloy
Color	White
Min. Packaging Quantity	20
Packing Size	423x230x320mm
Dimension	132x38.8mm
Load Bearing	The wall must be strong enough to withstand at least 3 times the weight of the camera and the junction box
Net Weight	215g
Working Temperature	-40°C~+60°C(-40°F~+140°F)
Working Humidity	10%~90%

# RING CABLE MANAGEMENT

PART CODE: NDA-RING-04-GR

## DIMENSIONS

