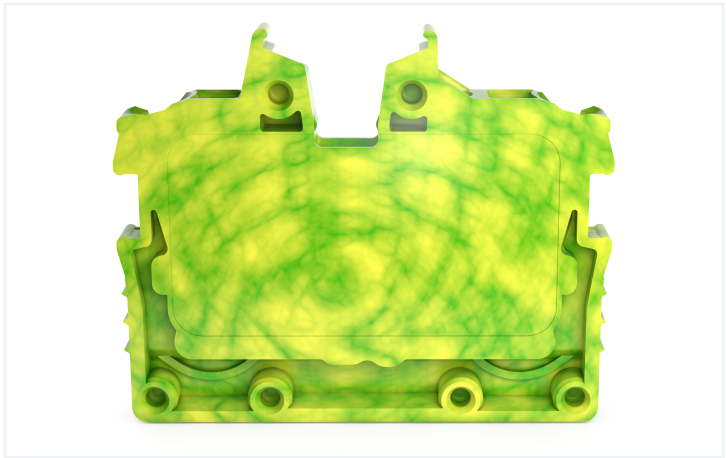



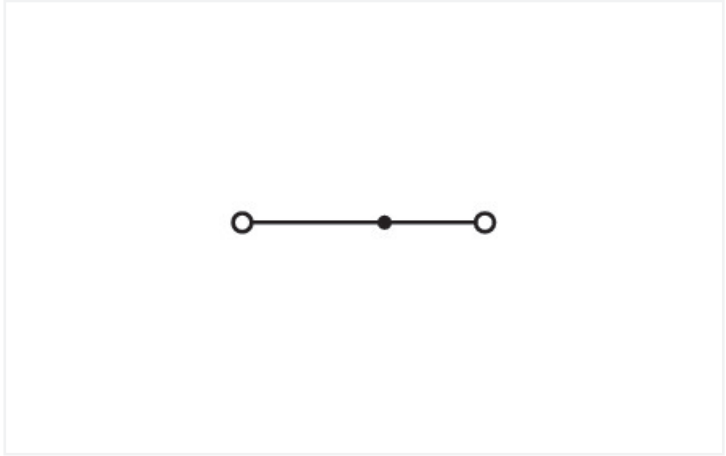
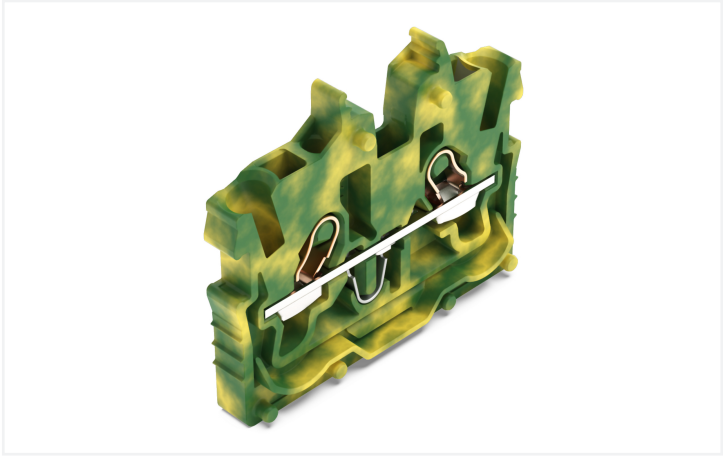
**Data Sheet | Item Number: 2050-327**

2-conductor miniature through terminal block; with operating slots; 1 mm²; Center terminal block without snap-in mounting foot, without mounting flange; side and center marking; with test port; Push-in CAGE CLAMP®; 1,00 mm²; green-yellow

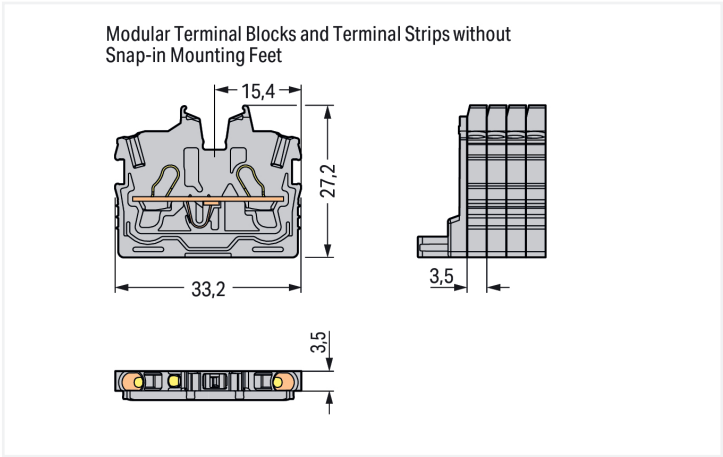
<https://www.wago.com/2050-327>



Color:  green-yellow



Similar to illustration





Through terminal block, 2050 Series, green-yellow

Our through terminal block (item number 2050-327) makes connections quick and easy. Our mini rail-mount terminal blocks are perfect for working in small spaces thanks to their compact design. With various mounting and actuation options, they offer complete flexibility. Rated current and voltage are key factors to consider when selecting a mini rail-mount terminal block, as they indicate how the product can be used. This product has a rated voltage of 500 V and a rated current of 13.5 A. Conductors can only be connected to this through terminal block if their strip length is between 9 mm and 11 mm. This product features conductor terminals and utilizes Push-in CAGE CLAMP®. Push-in CAGE CLAMP® connection technology is ideal for connecting all conductor types. It allows direct insertion of both solid and fine-stranded conductors with ferrules without the need for tools—all thanks to its pluggable design. This through terminal block is suitable for conductor cross sections ranging from 0.14 mm² to 1.5 mm². It features one level and two clamping points for connecting a single potential. The green-yellow housing is made of polyamide (PA66) for insulation. An operating tool is used to operate this mini rail-mount terminal block. Our TOPJOB® S rail-mount terminal blocks offer more than just secure electrical connections in a range of different industrial applications and modern building installations. They also offer the perfect solution for every need: lever, push-button, or operating slot. The front-entry wiring makes it possible to connect copper conductors. The one jumper slot enables potential distribution to other clamping points. This product is designed for specific Ex applications (please refer to the product datasheet).

Electrical data						
Ratings per		IEC/EN 60998-2-2			Ex information	
Overvoltage category		III	III	II	Reference hazardous areas	See "Downloads – Documentation – Additional Information: Technical Section; Technical Explanations"
Pollution degree		3	2	2		
Nominal voltage		500 V	-	-	Ratings per	ATEX: PTB 19 ATEX 1019 U / IECEx: PTB 19.0050U (Ex eb IIC Gb)
Rated surge voltage		6 kV	-	-		
Rated current		13.5 A	-	-	Rated voltage EN (Ex e II)	352 V
Current at conductor cross-section (max.) mm²		17.5 A	-	-	Rated current (Ex e II)	13.5 A
					Rated current (Ex e II) with jumper	12 A

Power Loss	
Power loss, per pole (potential)	0.4338 W
Rated current I <sub>N</sub> for specified power loss	13.5 A
Resistance value for specified, current-dependent power loss	0.00238 Ω

Connection data				
Clamping units	2		Connection 1	
Total number of potentials	1		Connection technology	Push-in CAGE CLAMP®
Number of levels	1		Actuation type	Operating tool
Number of jumper slots	1		Connectable conductor materials	Copper
			Nominal cross-section	1 mm²
			Solid conductor	0.14 ... 1.5 mm² / 24 ... 16 AWG
			Solid conductor; push-in termination	0.5 ... 1.5 mm² / 20 ... 16 AWG
			Fine-stranded conductor	0.14 ... 1.5 mm² / 24 ... 16 AWG
			Fine-stranded conductor; with insulated ferrule	0.14 ... 1 mm² / 24 ... 18 AWG
			Fine-stranded conductor; with uninsulated ferrule	0.14 ... 1 mm² / 24 ... 18 AWG
			Fine-stranded conductor; with ferrule; push-in termination	0.5 ... 1 mm² / 20 ... 18 AWG
			Note (conductor cross-section)	Depending on the conductor characteristic, a conductor with a smaller cross-section can also be inserted via push-in termination.
			Strip length	9 ... 11 mm / 0.35 ... 0.43 inches
			Wiring direction	Front-entry wiring



Physical data		
Width		3.5 mm / 0.138 inches
Height from the surface		27.2 mm / 1.071 inches
Depth		33.2 mm / 1.307 inches

Mechanical data		
Mounting type		without snap-in mounting feet
Marking level		Center/side marking

Material data		
Note (material data)		<a href="#">Information on material specifications can be found here</a>
Color		green-yellow
Material group		I
Insulation material (main housing)		Polyamide (PA66)
Flammability class per UL94		V0
Fire load		0 MJ
Weight		2.3 g

Environmental requirements		
Processing temperature		-35 ... +85 °C
Continuous operating temperature		-60 ... +105 °C

Commercial data		
PU (SPU)		100 pcs
Packaging type		Box
Country of origin		IN
GTIN		4055143964791
Customs tariff number		85369010000

Product classification		
UNSPSC		39121410
ETIM 9.0		EC001284
ETIM 8.0		EC001284
ECCN		NO US CLASSIFICATION

Environmental Product Compliance		
RoHS Compliance Status		Compliant,No Exemption



Approvals / Certificates

General approvals



Approval	Standard	Certificate Name
CCA DEKRA Certification B.V.	EN 60998	NTR NL 7840
CSA CSA	C22.2 No. 158	80034182
cURus Underwriters Laboratories Inc.	UL 1059	E45172
KEMA/KEUR DEKRA Certification B.V.	EN 60998	71-113957

Declarations of conformity and manufacturer's declarations

Approval	Standard	Certificate Name
ATEX-Attestation of Con- formity WAGO GmbH & Co. KG	-	-
EU-Declaration of Confor- mity WAGO GmbH & Co. KG	-	-
UK-Declaration of Confor- mity WAGO GmbH & Co. KG	-	-

Approvals for hazardous areas



Approval	Standard	Certificate Name
ATEX Physikalisch Technische Bundesanstalt	EN IEC 60079-0	PTB 19 ATEX 1019 U (II 2G Ex eb IIC Gb or I M 2 Ex eb I Mb)
CCC CNEX	GB/T 3836.3	2020312313000289 (Ex eb IIC Gb, Ex eb I Mb)
IECEx Physikalisch Technische Bundesanstalt	IEC 60079	IECEx PTB 19.0050U (Ex eb IIC Gb or EX eb I Mb)
INMETRO TÜV Rheinland do Brasil Ltda.	IEC 60079	TÜV 22.0014 U

Downloads

Environmental Product Compliance

Compliance Search
Environmental Product Compliance 2050-327



CAD/CAE-Data

CAD data
2D/3D Models 2050-327



CAE data
EPLAN Data Portal 2050-327
ZUKEN Portal 2050-327





1 Compatible Products

1.1 Required Accessories

1.1.1 End plate

1.1.1.1 End plate



**Item No.: 2050-381**  
End plate; with fixing flange; 1.3 mm thick; gray

1.2 Optional Accessories

1.2.1 Ferrule

1.2.1.1 Ferrule



**Item No.: 216-241**  
Ferrule; Sleeve for 0.5 mm² / 20 AWG; insulated; electro-tin plated; electrolytic copper; gastight crimped; acc. to DIN 46228, Part 4/09.90; white



**Item No.: 216-242**  
Ferrule; Sleeve for 0.75 mm² / 18 AWG; insulated; electro-tin plated; electrolytic copper; gastight crimped; acc. to DIN 46228, Part 4/09.90; gray



**Item No.: 216-243**  
Ferrule; Sleeve for 1 mm² / AWG 18; insulated; electro-tin plated; electrolytic copper; gastight crimped; acc. to DIN 46228, Part 4/09.90; red

1.2.2 Jumper

1.2.2.1 Jumper



**Item No.: 2000-406/020-000**  
Delta jumper; insulated; light gray



**Item No.: 2000-410/000-006**  
Jumper; 10-way; insulated; blue



**Item No.: 2000-410**  
Jumper; 10-way; insulated; light gray



**Item No.: 2000-410/000-005**  
Jumper; 10-way; insulated; red



**Item No.: 2000-402/000-006**  
Jumper; 2-way; insulated; blue



**Item No.: 2000-402**  
Jumper; 2-way; insulated; light gray



**Item No.: 2000-402/000-005**  
Jumper; 2-way; insulated; red



**Item No.: 2000-402/000-018**  
Jumper; 2-way; insulated; yellow-green



**Item No.: 2000-403/000-006**  
Jumper; 3-way; insulated; blue



**Item No.: 2000-403**  
Jumper; 3-way; insulated; light gray



**Item No.: 2000-403/000-005**  
Jumper; 3-way; insulated; red



**Item No.: 2000-404/000-006**  
Jumper; 4-way; insulated; blue



**Item No.: 2000-404**  
Jumper; 4-way; insulated; light gray



**Item No.: 2000-404/000-005**  
Jumper; 4-way; insulated; red



**Item No.: 2000-405/000-006**  
Jumper; 5-way; insulated; blue



**Item No.: 2000-405**  
Jumper; 5-way; insulated; light gray



**Item No.: 2000-405/000-005**  
Jumper; 5-way; insulated; red



**Item No.: 2000-406/000-006**  
Jumper; 6-way; insulated; blue



**Item No.: 2000-406**  
Jumper; 6-way; insulated; light gray



**Item No.: 2000-406/000-005**  
Jumper; 6-way; insulated; red



**Item No.: 2000-407/000-006**  
Jumper; 7-way; insulated; blue



**Item No.: 2000-407**  
Jumper; 7-way; insulated; light gray



**Item No.: 2000-407/000-005**  
Jumper; 7-way; insulated; red



**Item No.: 2000-408/000-006**  
Jumper; 8-way; insulated; blue



**Item No.: 2000-408**  
Jumper; 8-way; insulated; light gray



**Item No.: 2000-408/000-005**  
Jumper; 8-way; insulated; red



**Item No.: 2000-409/000-006**  
Jumper; 9-way; insulated; blue



**Item No.: 2000-409**  
Jumper; 9-way; insulated; light gray



**Item No.: 2000-409/000-005**  
Jumper; 9-way; insulated; red



**Item No.: 2000-440**  
Jumper; from 1 to 10; insulated; light gray



**Item No.: 2000-433/000-006**  
Jumper; from 1 to 3; insulated; blue



**Item No.: 2000-433**  
Jumper; from 1 to 3; insulated; light gray



1.2.2.1 Jumper



[Item No.: 2000-433/000-005](#)  
Jumper; from 1 to 3; insulated; red



[Item No.: 2000-434](#)  
Jumper; from 1 to 4; insulated; light gray



[Item No.: 2000-435](#)  
Jumper; from 1 to 5; insulated; light gray



[Item No.: 2000-436](#)  
Jumper; from 1 to 6; insulated; light gray



[Item No.: 2000-437](#)  
Jumper; from 1 to 7; insulated; light gray



[Item No.: 2000-438](#)  
Jumper; from 1 to 8; insulated; light gray



[Item No.: 2000-439](#)  
Jumper; from 1 to 9; insulated; light gray



[Item No.: 2000-405/011-000](#)  
Star point jumper; 3-way; insulated; light gray

1.2.3 Marking

1.2.3.1 Group marker carrier



[Item No.: 2009-191](#)  
Group marker carrier; gray

1.2.3.2 Marker



[Item No.: 793-3501](#)  
WMB marking card; as card; plain; snap-on type; white



[Item No.: 2009-113/000-006](#)  
WMB-Inline; for Smart Printer; 2300 pieces on roll; plain; snap-on type; blue



[Item No.: 2009-113/000-007](#)  
WMB-Inline; for Smart Printer; 2300 pieces on roll; plain; snap-on type; gray



[Item No.: 2009-113/000-023](#)  
WMB-Inline; for Smart Printer; 2300 pieces on roll; plain; snap-on type; green



[Item No.: 2009-113/000-017](#)  
WMB-Inline; for Smart Printer; 2300 pieces on roll; plain; snap-on type; light green



[Item No.: 2009-113/000-012](#)  
WMB-Inline; for Smart Printer; 2300 pieces on roll; plain; snap-on type; orange



[Item No.: 2009-113/000-005](#)  
WMB-Inline; for Smart Printer; 2300 pieces on roll; plain; snap-on type; red



[Item No.: 2009-113/000-024](#)  
WMB-Inline; for Smart Printer; 2300 pieces on roll; plain; snap-on type; violet



[Item No.: 2009-113](#)  
WMB-Inline; for Smart Printer; 2300 pieces on roll; plain; snap-on type; white



[Item No.: 2009-113/000-002](#)  
WMB-Inline; for Smart Printer; 2300 pieces on roll; plain; snap-on type; yellow

1.2.3.3 Marking strip



[Item No.: 2009-110](#)  
Marking strips; for Smart Printer; on reel; not stretchable; plain; snap-on type; white

1.2.4 Protective warning marker

1.2.4.1 Cover



[Item No.: 2000-115](#)  
Protective warning marker; for 5 terminal blocks; with high-voltage symbol, black; yellow



1.2.5 Push-in type wire jumper

1.2.5.1 Jumper



**Item No.: 2009-404**  
Push-in type wire jumper; 0.75 mm²; insulated; 110 mm long; gray



**Item No.: 2009-406**  
Push-in type wire jumper; 0.75 mm²; insulated; 250 mm long; gray



**Item No.: 2009-402**  
Push-in type wire jumper; 0.75 mm²; insulated; 60 mm long; gray

1.2.6 Test and measurement

1.2.6.1 Testing accessories



**Item No.: 2009-174**  
Test plug adapter; for 4 mm Ø test plugs; for testing TOPJOB®S rail-mounted terminal blocks; gray



**Item No.: 210-136**  
Test plug; 2 mm Ø; with 500 mm cable; red



**Item No.: 2009-182**  
Testing tap; for max. 2.5 mm²; tool-free connection for individual test wires 0.08 - 2.5 mm; gray

1.2.7 Tool

1.2.7.1 Operating tool



**Item No.: 210-719**  
Operating tool; Blade: 2.5 x 0.4 mm; with a partially insulated shaft



**Item No.: 210-648**  
Operating tool; Blade: 2.5 x 0.4 mm; with a partially insulated shaft; angled; short

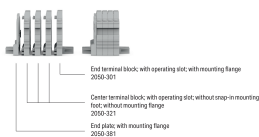


**Item No.: 210-647**  
Operating tool; Blade: 2.5 x 0.4 mm; with a partially insulated shaft; multicoloured

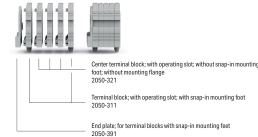
Installation Notes

Installation

Example of a 4-pole terminal strip, with operating slots with mounting flange



Example of a 5-pole terminal strip, with operating slots, with snap-in mounting foot, Pole number 1-2



Conductor termination



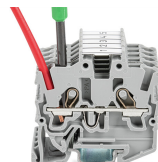
Insert solid conductors via push-in termination.



Insert ferruled conductors via push-in termination.



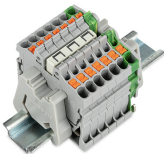
Insert fine-stranded conductors via operating tool.



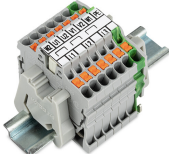
Remove all conductors via operating tool.



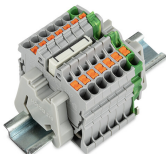
Commoning



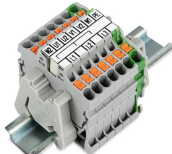
Insert a delta jumper and push down until it hits the backstop (example shows terminal blocks with push-buttons).



Marking strip (Item No. 2009-110) inserted in the marking slot with jumper symbols of the inserted jumper (delta jumper) (example shows terminal blocks with push-buttons)



Insert a star point jumper and push down until it hits the backstop (example shows terminal blocks with push-buttons).



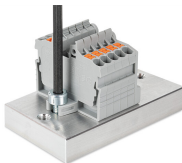
Marking strip (Item No. 2009-110) inserted in the marking slot with jumper symbols of the inserted jumper (2000-405/011-000 Delta Jumper) (example shows terminal blocks with push-buttons)

Testing

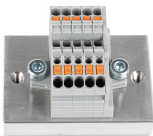


Testing with a 2 mm Ø 210-136 Test Plug (max. 42 V).

Installation



Mounting and securing a terminal strip directly to the plate via screw-type flanges (example shows terminal blocks with push-buttons).



Terminal strip; with mounting flanges; screw mounting (example shows terminal blocks with push-buttons)

Installation



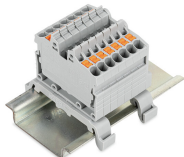
Mounting a terminal strip with snap-in feet into holes.



Mounting a terminal strip with snap-in feet onto aluminum rail.



Snapping a mounting foot (209-120) to a terminal strip with snap-in mounting feet. (Distance between mounting feet: approx. 20 ... 25 mm)



Terminal strip; with snap-in mounting feet; for DIN-35 rail (209-120 Mounting Foot) (example shows terminal blocks with push-buttons)

Marking



Snapping a marking strip into the marker slot.



Snapping a marking strip (Item No. 2009-110) into a marker slot.



