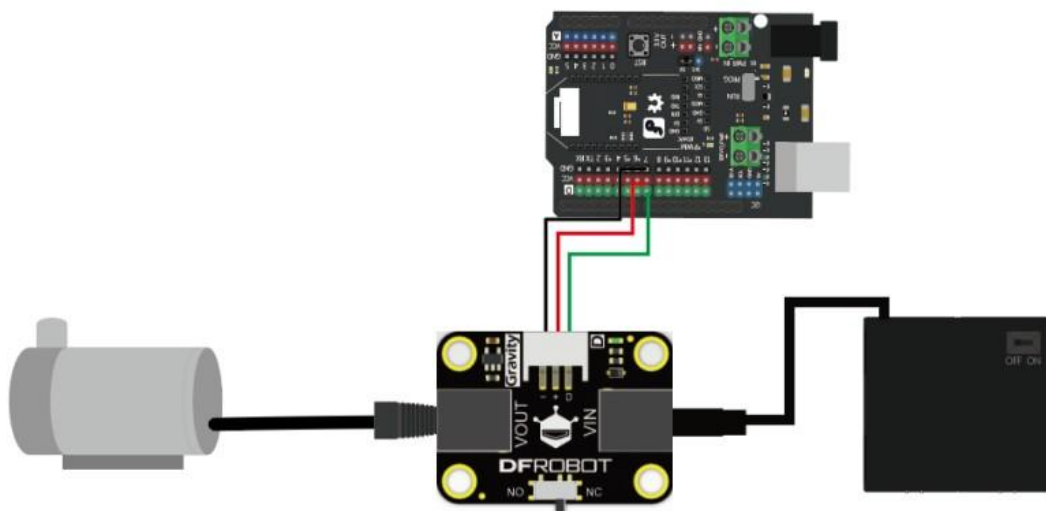


Introduction

Make small fountains, auto aquarium water changers, or plant-watering projects with this water pump!

This DC water pump inherits all benefits from the previous [Amphibious Horizontal Submersible Pump](#), and comes with an improved DC2.1 connector and longer wire(1m), which can be used in deep water scenarios. It's great for beginner projects and super easy to use!



Hardware Connection

Note: It is recommended to use with [Easy Relay Module](#).

Features

- DC2.1 connector, plug and go
- 1m wire for more applications
- 3-6V operating voltage, safe for education scenarios

Applications

- Fountain
- Aquarium water changer
- DIY plant watering
- Agricultural Irrigation

Specification

- Power Supply: DC 3 to 6V

Current: 150 to 370mA

Lift: 25 to 45cm

Flow: 80-100L/H

Power: 0.4 to 2W

Water Inlet/Outlet: 5mm/0.20"

Wire Length: 1m

Shipping List

DC Water Pump (DC2.1 Connector) x1

Pipe 1m x1