

## Stainless Steel Saddle Mount



### Product Details:

Material: 316 Grade Stainless Steel

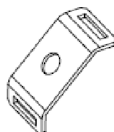
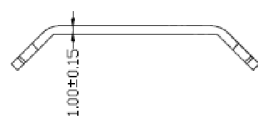
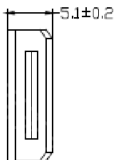
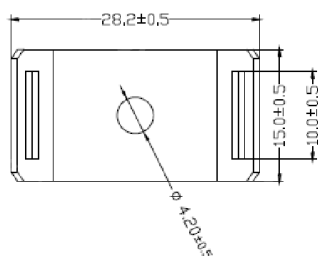
A durable and strong cable tie mount, designed to complement stainless steel cable ties

Available with either an M4 or M6 fixing hole to accommodate a wide range of fixing methods

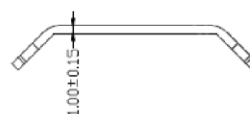
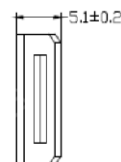
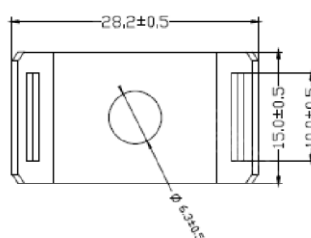
### Standards:

RoHS

ACTSSM4



ACTSSM6



Part No.	Length	Width	Height	Fixing Hole	Max Tie Width	Pack Size
ACTSSM4	29.2mm	15.0mm	5.2mm	4.2mm	10.0mm	100
ACTSSM6	29.2mm	15.0mm	5.2mm	6.2mm	10.0mm	100