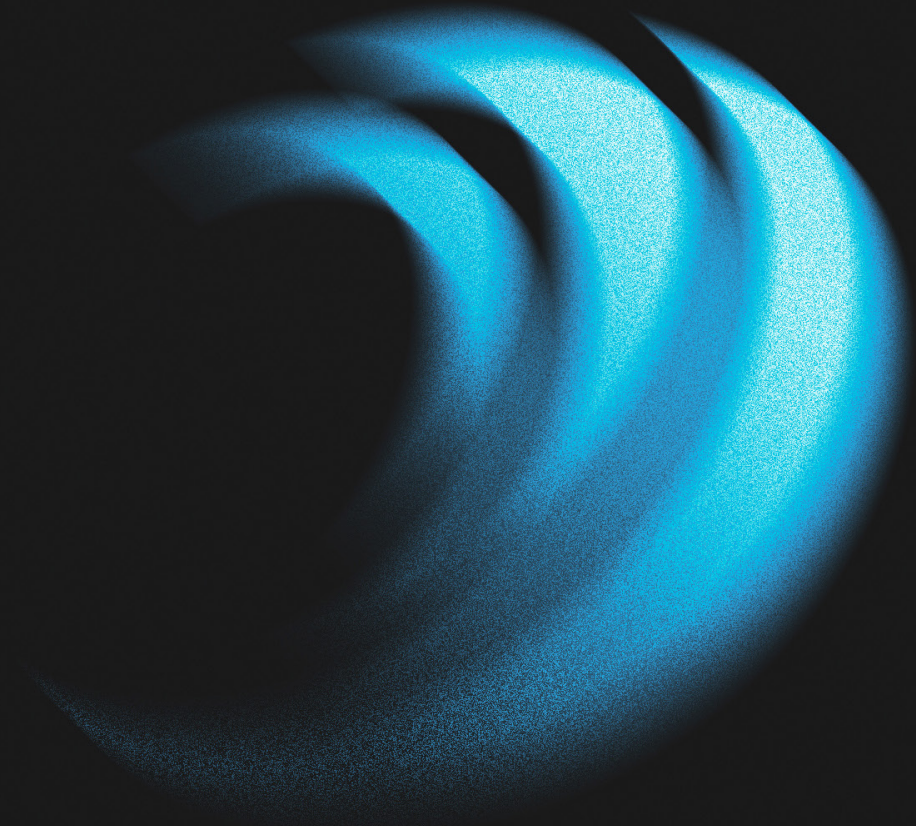




LED

STRIP LIGHT

DC 24V
Ultra-Wide





TGR-960 / 1600-24-xxxxK

Ultra-Wide PCB

FEATURES

- Ultra-Wide PCB design.
- Uniform lighting, no light spots, no shadows.
- Shorter heat dissipation path, lower thermal resistance.
- Energy-saving and environmentally friendly, compliant with ROHS & REACH environmental standards.
- Multiple specifications, support customization.

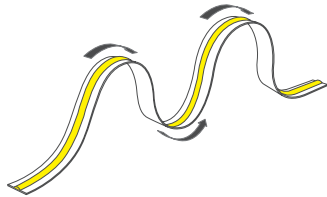


DIMENSION

Input voltage: DC 24V Ra: >90
Rated power: 24W/38W Power
error range: ±10%

Tape IP: IP20
Warranty: 3years
Working temperature: -20~+45°C
Storage temperature: -20~+70°C

Bending radius: Rmin



Rmin=30mm

OPTICAL & ELECTRICAL PARAMETERS

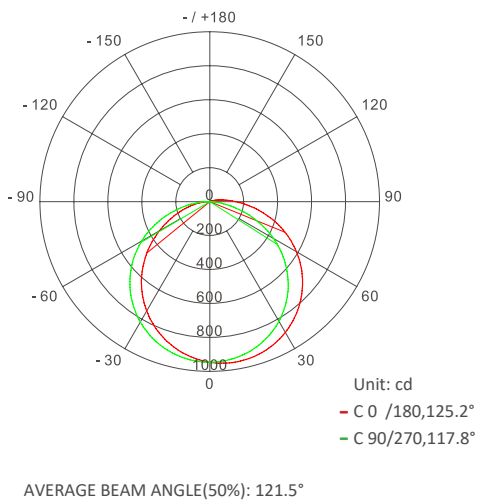
Model No.	Voltage	Ra	Color	CCT	Lm/m	Lm/W	W/m
TGR-960-24-xxxxK	24V DC	>90	White	2700K	2640	110	24
				3000K	2760	115	
				4000K	2880	120	
				5500K	3000	125	
TGR-1600-24-xxxxK	24V DC	>90	White	2700K	3990	105	38
				3000K	4180	110	
				4000K	4370	115	
				5500K	4560	120	

OTHER PARAMETERS

Model No.	LED Qty (pcs/m)	Standard Packing Length	Max Run	Min. Cutting Unit	LED Pitch
TGR-960-24-xxxxK	960	5000 mm	5 m	50 mm	--
TGR-1600-24-xxxxK	1600	5000 mm	5 m	25 mm	--

NOTE:

- Test environment temperature is 25±2°C.
- The above data was measured under standard conditions and actual data may be different. We would update data without further notice. The above luminous flux data is based on corresponding light color.
- If the selected LED chip is different, the color temperature and luminous flux will change accordingly.
- *The light efficiency is based on the measured values.
- *Typical luminous flux and power error are ± 10%.
- *The Max run length is based on one end power feed.
- *If the product power is greater than 15W, auxiliary heat dissipation appliances must be added.



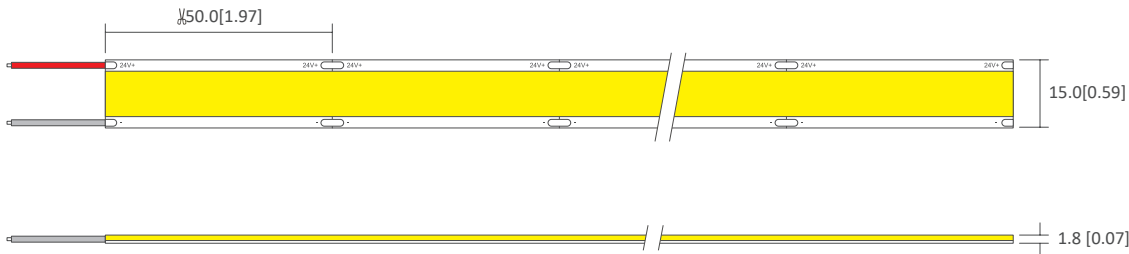
Flux Out: 1573lm		CCT=4000K	
Height	Eavg, Emax	Beam Angle: 113.43°	Diameter
0.02m	527827,1839981lx		6.09cm
0.04m	131957,459995lx		12.19cm
0.06m	58647,204442lx		18.28cm
0.08m	32989,114999lx		24.37cm
0.10m	21113,73599lx		30.46cm
0.12m	14662,51111lx		36.56cm
0.14m	10772,37551lx		42.65cm
0.16m	8247,28750lx		48.74cm
0.18m	6516,22716lx		54.84cm
0.20m	5278,18400lx		60.93cm

Note: above data tested with TGR-960-24 series at 4000K . For other data,please consult sales rep.

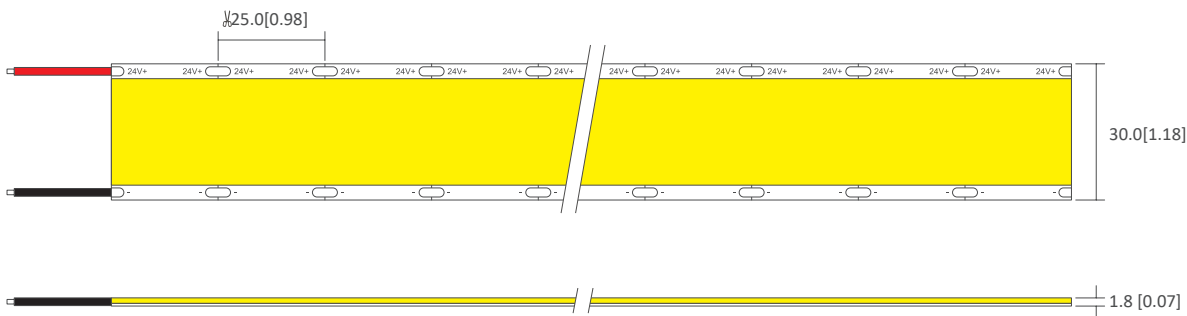
PROFILE DRAWINGS

Unit: mm[inch]

TGR-960-24-xxxxK

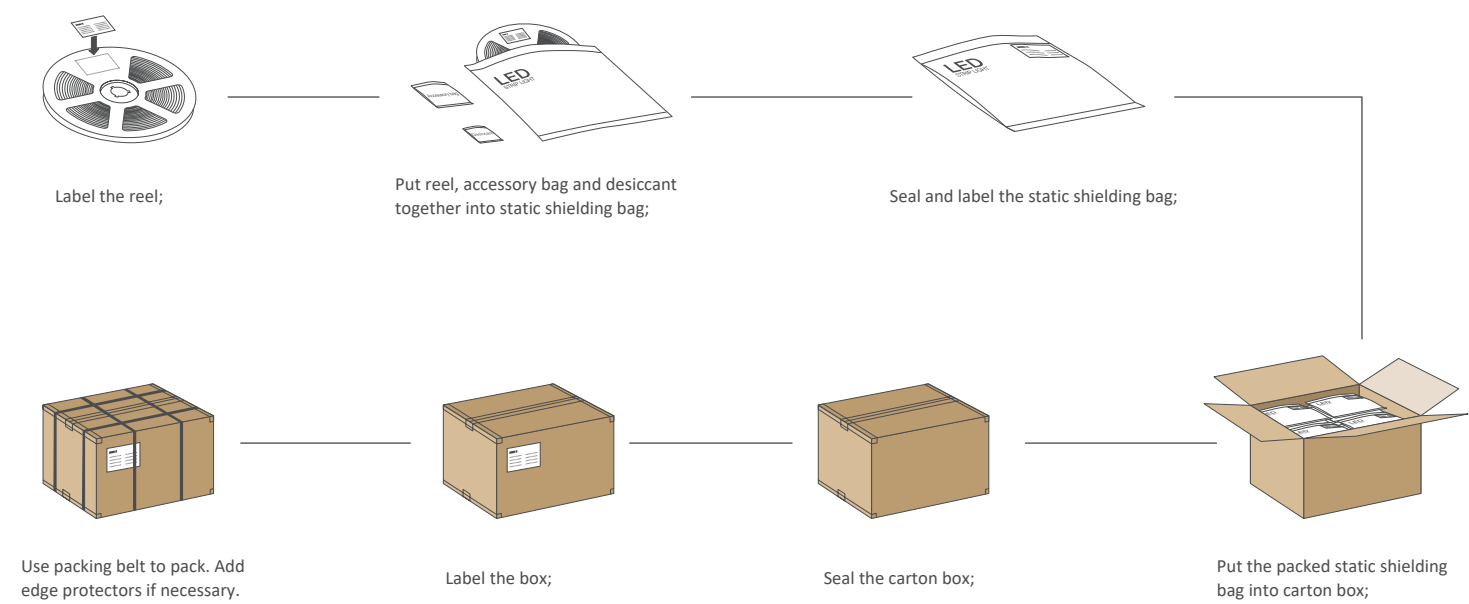


TGR-1600-24-xxxxK



Note: for more info, please contact sales rep.

PACKAGING INFORMATION



Model No.	Product Size L*W(mm)	Carton Size(mm)	Meter/Reel	Reel/Carton	Net Weight (kg)	Gross Weight (kg)
TGR-960-24-xxxxK	5000*15	550*400*340	5 m	80	9.2 (1±10%)	13.1 (1±10%)
TGR-1600-24-xxxxK	5000*30	550*400*340	5 m	50	16.2 (1±10%)	18.5 (1±10%)

NOTE:

The above-mentioned packaging quantity and weight are only for the illustrated packaging method. For other packaging methods, the packaging quantity and weight will be different. The actual weight is subject to the actual product.

ATTENTIONS BEFORE INSTALLATION

- Before installation, please check whether the parameters of the product are consistent with the requirements (Seeing the Product Specification or Label).
- The voltage, current, and power of the power supply and load used must be consistent with this product.
- Follow the instructions of wiring diagram (first connect the load and then the power supply) to avoid short circuit.
- Product wires must be correctly connected to the positive and negative terminals of the power output, otherwise the light will not turn on.
- The power cord should be tightly screwed into the terminal, with a recommended tightness that cannot be pulled out by hand.
- The connection terminals must be effectively waterproof and corrosion-resistant.
- If the working length exceeded the max run length, make sure to have extra power supply.
- If it needs higher current of a LED, make sure having extra cooling.

WARNING

- Do not disassemble or retrofit the light. Do not touch the surface of the light with a sharp object.
- Do not do live-line working during installation,especially for high voltage product.
- Do not use any organic chemical solvents.
- Use neutral glass adhesive to fix this product and it needs to be dried 4 hours in the open environment after operation.
- Treat the ends and the circuit connection points that are not connected to the main line with insulation,waterproof, and anti-corrosion in the installation.
- Use 18AWG (0.75mm² cross-sectional area) or thicker core wire to avoid adverse consequences caused by overheating, if the power cable need to lengthen.
- Make sure the input voltage meets the requirements and lines are connected correctly before lighting on.
- This product is for signage, and do not use as general lighting.
- Series connection within the max run.
- The length of the power cable between the power supply and the led strip should not exceed 2 meters.Otherwise, large circuit loss will lead to inconsistent brightness.
- Installation, maintenance and repair should be operated by a qualified technician.

Version	Content	Date
C1.0	First release	2025-3-7