

Color: ■ blue

Physical data	
Width	17.5 mm / 0.689 inches
Height	77.6 mm / 3.055 inches
Depth from upper-edge of DIN-rail	25.5 mm / 1.004 inches

Mechanical data	
Mounting type	DIN-35 rail Screw mount
Suitable	for 2-, 3- and 5-conductor 221 Series Splicing Connectors (4 mm²)

Material data	
Note (material data)	<a href="#">Information on material specifications can be found here</a>
Color	blue
Material group	I
Insulation material (main housing)	Polyamide (PA66)
Flammability class per UL94	V0
Fire load	0.294 MJ
Weight	9.8 g

Commercial data	
PU (SPU)	50 (10) pcs
Packaging type	Box
Country of origin	CN
GTIN	4055143833547
Customs tariff number	39269097900



Product classification		
UNSPSC		39121702
ETIM 9.0		EC002848
ETIM 8.0		EC002848
ECCN		NO US CLASSIFICATION

Environmental Product Compliance		
RoHS Compliance Status		Compliant,No Exemption

Downloads

Environmental Product Compliance

Compliance Search		
Environmental Product Compliance		↓
221-500/000-006		

Documentation

Bid Text		
221-500/000-006	xml 3.16 KB	↓
221-500/000-006	docx 30.29 KB	↓

CAD/CAE-Data

CAD data		
2D/3D Models		
221-500/000-006		↓

CAE data		
ZUKEN Portal		
221-500/000-006		↓

1 Compatible Products

1.1 Optional Accessories

1.1.1 Marking

1.1.1.1 Marking strip



Item No.: [210-833](#)  
Marking strips; 25 m on roll; 6 mm wide;  
plain; Self-adhesive; white

1.1.2 Mounting adapter

1.1.2.1 Mounting accessories



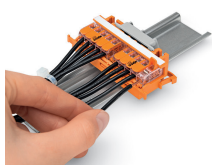
Item No.: 222-510  
Angled DIN-rail adapter; in combination with mounting carrier; 221-500 or 222-500; for DIN-35 rail mounting; gray



Item No.: 222-505  
Strain relief plate; for mounting carrier; 221 or 222 Series, can be snapped

Installation Notes

Conductor termination



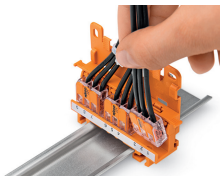
**CAGE CLAMP® connection:**  
Conductor termination with connectors fitted in a mounting carrier



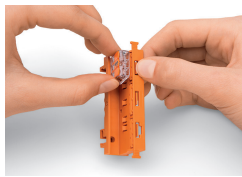
Removing a conductor.



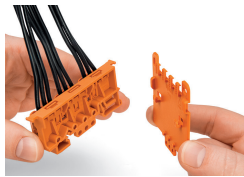
Inserting a connector into the mounting carrier.



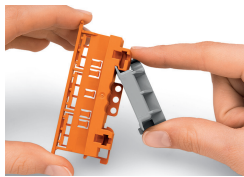
Inserting a connector into the mounting carrier.



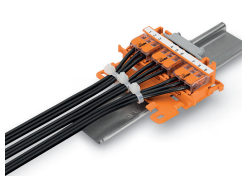
Removing a connector from the mounting carrier.



Securing a strain relief plate (222-505) to the mounting carrier.



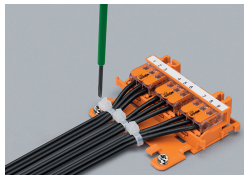
Snapping the angled DIN-rail adapter (222-510) onto the mounting carrier.



Horizontal mounting on DIN-35 rail using an angled DIN-rail adapter



Horizontal mounting on DIN-35 rail using an angled DIN-rail adapter



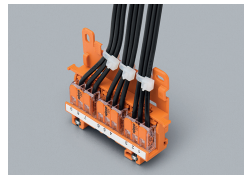
Horizontal screw mounting with strain relief plate on a flat surface



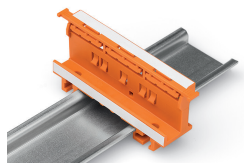
Vertical mounting with strain relief plate on DIN-35 rail



Strain relief via cable ties on the mounting carrier (transverse to the connectors' wiring direction) – clamping units labeled via marking strips (210-334)



Vertical screw mounting with strain relief plate on a flat surface



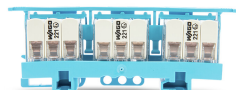
Mounting carrier on a DIN-35 rail

## Testing



Testing connectors via test slots on top of the carrier.

## Ex application



Carriers with a blue insulated housing are suitable for Ex i applications. Both clearances and creepage distances for the protection type "intrinsic safety Ex i" must be observed.