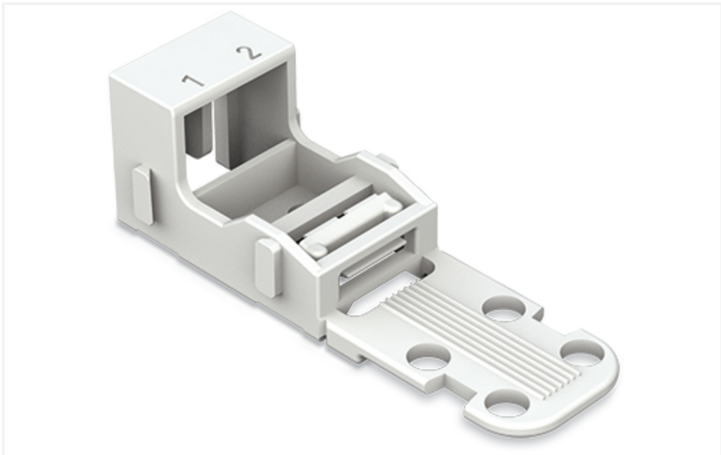


Data Sheet | Item Number: 221-512

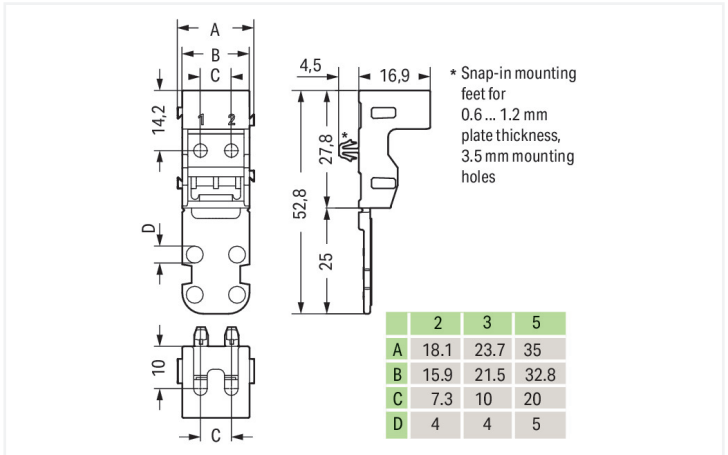
Mounting carrier; for 2-conductor terminal blocks; 221 Series - 4 mm²; with snap-in mounting foot for horizontal mounting; white

<https://www.wago.com/221-512>



Color: white

Similar to illustration



Dimensions in mm

Physical data

Width	18.1 mm / 0.713 inches
Height	21.4 mm / 0.843 inches
Height from the surface	16.9 mm / 0.665 inches
Depth	52.8 mm / 2.079 inches

Mechanical data

Mounting type	with snap-in mounting foot for horizontal mounting
Suitable	for 2-wire connectors (4 mm²)

Material data

Note (material data)	Information on material specifications can be found here
Color	white
Material group	I
Insulation material (main housing)	Polyamide (PA66)
Flammability class per UL94	V0
Fire load	0.083 MJ
Weight	2.8 g

Commercial data

PU (SPU)	50 (10) pcs
Packaging type	Box
Country of origin	CN
GTIN	4055143595834
Customs tariff number	39269097900



Product classification		
UNSPSC		39121409
eCl@ss 10.0		27-14-11-92
eCl@ss 9.0		27-14-11-92
ETIM 9.0		EC002848
ETIM 8.0		EC002848
ECCN		NO US CLASSIFICATION

Environmental Product Compliance	
RoHS Compliance Status	Compliant,No Exemption

Downloads	
Environmental Product Compliance	
Compliance Search	
Environmental Product Compliance 221-512	↓

Documentation				
Bid Text				
221-512	19.02.2019	xml	2.73 KB	↓
221-512	04.01.2018	doc	24.00 KB	↓

CAD/CAE-Data			
CAD data		CAE data	
2D/3D Models 221-512	↓	EPLAN Data Portal 221-512	↓
		ZUKEN Portal 221-512	↓

1 Compatible Products
1.1 Optional Accessories
1.1.1 Marking
1.1.1.1 Marking strip

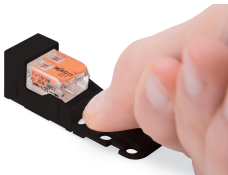


Item No.: 210-833
Marking strips; 25 m on roll; 6 mm wide;
plain; Self-adhesive; white

Installation Notes



Inserting a connector into the mounting carrier.



Removing a connector from the mounting carrier.

Conductor termination



Inserting a conductor.



Horizontal screw mounting



Vertical screw mounting



Horizontal mounting via snap-in foot



Vertical mounting via snap-in foot

Strain relief

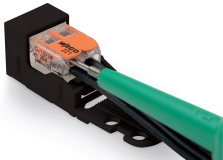


Use a cable tie to secure the conductors to the strain relief plate.



The strain relief plate can be removed.

Testing



Testing a connector mounted on the carrier via test slot.

Application



Connecting a light to the mains.

Marking



Labeling the mounting carrier.