

Color: ■ blue



Electrical data

Ratings per IEC/EN	
Nominal voltage (III/3)	400 V
Rated current	41 A

Physical data

Width	12.3 mm / 0.484 inches
Height	10.74 mm / 0.423 inches
Depth	23.9 mm / 0.941 inches
Jumper assignment	1-2



Mechanical data	
Use	with locking

Material data	
Note (material data)	Information on material specifications can be found here
Color	blue
Insulation material (main housing)	Polyamide (PA66)
Fire load	0 MJ
Weight of insulation material	0.45 g
Weight	2.9 g

Environmental requirements	
Continuous operating temperature	-60 ... +105 °C

Commercial data	
PU (SPU)	5 pcs
Packaging type	Bag
Country of origin	CN
GTIN	4055144068016
Customs tariff number	85366990990



Product classification	
UNSPSC	39121421
ETIM 9.0	EC000489
ETIM 8.0	EC000489
ECCN	NO US CLASSIFICATION

Environmental Product Compliance	
RoHS Compliance Status	Compliant,No Exemption

Downloads	
Environmental Product Compliance	
Compliance Search	
Environmental Product Compliance 221-941/000-006	


Documentation

Bid Text

221-941/000-006	xml 2.96 KB	
221-941/000-006	docx 27.51 KB	

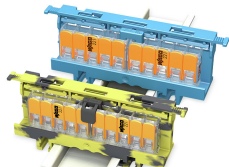
CAD/CAE-Data

CAD data

2D/3D Models 221-941/000-006	
---------------------------------	---

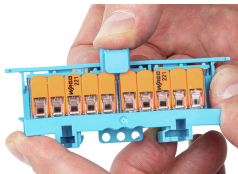
Installation Notes

Commoning



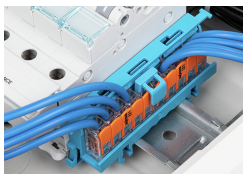
Extending the N and PE (ground) distribution via jumper

Commoning



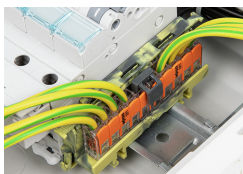
Insert the jumper with a locking function into closed clamping units.

Commoning



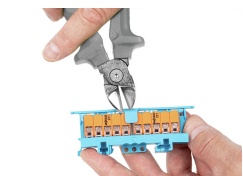
With a locking function:
The lockable jumper is plugged into the splicing connectors.

Commoning

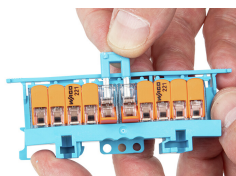


The lockable jumper is plugged into the splicing connectors.

Commoning



Remove the locking mechanism for intentional jumper removal.



Remove the jumper from open clamping units.