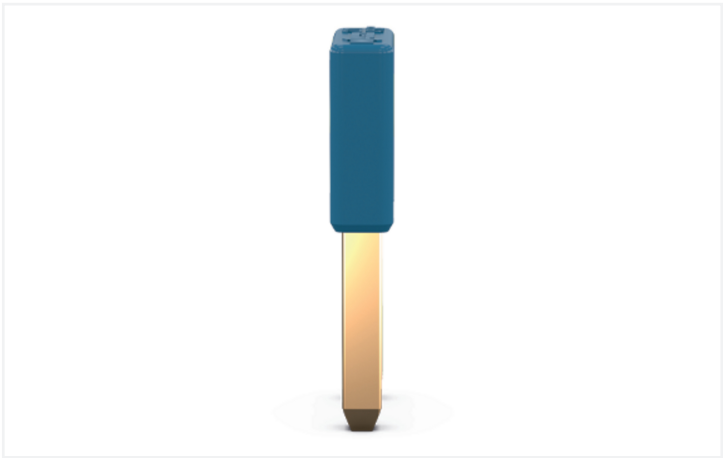


Color: ■ blue



Electrical data

Ratings per IEC/EN	
Nominal voltage (III/3)	400 V
Rated current	41 A

Physical data

Width	12.3 mm / 0.484 inches
Height	3.8 mm / 0.15 inches
Depth	23.9 mm / 0.941 inches
Jumper assignment	1-2



Material data		
Note (material data)		<a href="#">Information on material specifications can be found here</a>
Color		blue
Insulation material (main housing)		Polyamide (PA66)
Fire load		0 MJ
Weight of insulation material		0.28 g
Weight		2.7 g

Environmental requirements		
Continuous operating temperature		-60 ... +105 °C

Commercial data		
PU (SPU)		5 pcs
Packaging type		Bag
Country of origin		CN
GTIN		4055144068115
Customs tariff number		85366990990

Product classification		
UNSPSC		39121421
ETIM 9.0		EC000489
ETIM 8.0		EC000489
ECCN		NO US CLASSIFICATION

Environmental Product Compliance		
RoHS Compliance Status		Compliant,No Exemption

Downloads		
Environmental Product Compliance		
Compliance Search		
Environmental Product Compliance 221-942/000-006		

Documentation			
Bid Text			
221-942/000-006	xml 2.97 KB		
221-942/000-006	docx 23.92 KB		

CAD/CAE-Data

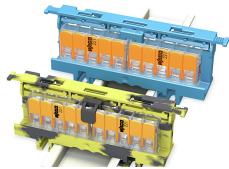
CAD data

2D/3D Models  
221-942/000-006



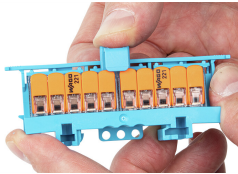
Installation Notes

Commoning



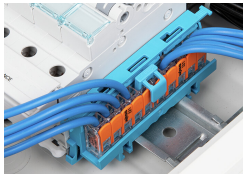
Extending the N and PE (ground) distribution via jumper

Commoning



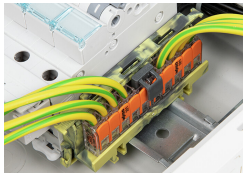
Insert the jumper with a locking function into closed clamping units.

Commoning



With a locking function:  
The lockable jumper is plugged into the splicing connectors.

Commoning



The lockable jumper is plugged into the splicing connectors.

## Commoning



Remove the jumper from open clamping units.