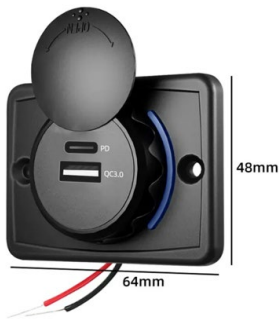


USB Panel Mount Chargers

19 OPTIONS

- Input voltage 12vdc - 24vdc
- 3 models to choose from
- Aluminium finish
- Integrated On Off Switch
- All versions supplied complete with 10A fuse cable

Option 1. Part number USB-C-PANEL-A



- 31W total output power
- Features PD power delivery and QC3.0 power delivery
- Ultra Fast Charging
- Material ABS
- 12 - 24V input
- 50.4mm between mounting hole centres
- USB A and USB C ports
- 5v 3.1A output per port
- Protective Cover (rotating)

Option 2. Part number USB-C-PANEL-C



- USB A port QC3.0 + USB C port PD
- 31W maximum load
- 3.1A 5V per output
- Fireproof ABS
- 12 - 24V input

Option 3. Part number USB-C-PANEL-D



- 2 x USB C ports
- Fireproof ABS
- 36W max. load
- 12 - 24V input
- PD3.0 5V 3A / 9V 2A / 12V 1.5A each output

TIGER POWER PRODUCTS – QUALITY & RELIABILITY

This specification is not for general release or circulation. Tiger Power reserves the right to make changes to spec. or product without notice or liability.

USB Panel Mount Chargers

19 OPTIONS

- Input voltage 12vdc - 24vdc
- 9 models to choose from
- Choice of ABS or Aluminium according to model
- Fast charging with QC3.0 and PD3.0
- USB A and USB C ports available

Option 1. Part number USB-C-PANEL-E



- Dual Type A USB + USB C ports
- 5V 2.1A + 5V 1A + PD3.0
- PD3.0 5V 3A / 9V 2A / 12V 1.5A
- ABS Material
- 33.5W max. rated load
- 12 - 24V input

Option 2. Part number USB-C-PANEL-F



- Dual Type C
- Fireproof ABS
- 36W max. load
- 12 - 24V input
- PD3.0 5V 3A / 9V 2A / 12V 1.5A
- IP67 Waterproof Rubber Protective cover

Option 3. Part number USB-C-PANEL-G



- USB A port QC3.0 5V 3A / 9V 2A / 12V 1.5A
- USB C port PD3.0 5V 3A / 9V 2A / 12V 1.5A
- ABS Material
- 36 max. load
- 12 - 24V input
- IP67 Waterproof Rubber Protective Protective Cover

TIGER POWER PRODUCTS – QUALITY & RELIABILITY

This specification is not for general release or circulation. Tiger Power reserves the right to make changes to spec. or product without notice or liability.

USB Panel Mount Chargers

19 OPTIONS

- Input voltage 12vdc - 24vdc
- 3 models to choose from
- Aluminium finish
- Integrated On Off Switch
- All versions supplied complete with 10A fuse cable

Option 1. Part number USB-C-PANEL-B-DUAL



- Dual 45W USB C ports
- Features PD power delivery
- Ultra Fast Charging
- Fireproof ABS
- 90W max. load
- 12 - 24V input
- Supplied with 60cm connecting cable (10A fuse supplied)
- on / off button
- Protective Cover



Option 2. Part number USB-C-PANEL-B



- USB A port 18W QC3.0 + USB C port PD 30W
- Fireproof ABS
- 48W max. load
- 12 - 24V input
- Supplied with 60cm connecting cable (10A fuse)
- On / off button
- Protective cover

Option 3. Part number USB-C-PANEL-CHG



- USB A port 36W QC3.0 + 2 x USB C port PD 30W
- Fireproof ABS
- 96W max. load (36w + 30w + 30w)
- 12 - 24V input
- Supplied with 60cm connecting cable (10A fuse)
- On / off button
- Protective Cover

TIGER POWER PRODUCTS – QUALITY & RELIABILITY

This specification is not for general release or circulation. Tiger Power reserves the right to make changes to spec. or product without notice or liability.

USB Panel Mount Chargers

19 OPTIONS

- Input voltage 12vdc - 24vdc
- 3 models to choose from
- Aluminium finish
- Integrated On Off Switch
- All versions supplied complete with 10A fuse cable

Option 1. Part number USB-C-PANEL-H



- 4 USB Port USB Panel Charger
- 2 x 30W USB C ports
- 2 x 18W USB A ports
- 96W Max. Power Rating
- Features PD power delivery
- On Off Switch

Option 2. Part number USB-C-PANEL-I



- Single USB C port Panel Mount Charger
- 30W Max. Charge Current
- Input 12 - 24V DC
- 5V / 9V / 12V 2.5A max. 3 stage charging
- Wide Compatability

Option 3. Part number USB-C-PANEL-J



- Single USB C port Panel Mount Charger
- 30W Max. Charge Current
- Input 12 - 24V DC
- 5V / 9V / 12V 2.5A max. 3 stage charging
- Wide Compatability

TIGER POWER PRODUCTS – QUALITY & RELIABILITY

This specification is not for general release or circulation. Tiger Power reserves the right to make changes to spec. or product without notice or liability.

USB Panel Mount Chargers

19 OPTIONS

- Input voltage 12vdc - 24vdc
- 3 models to choose from
- Aluminium finish
- Integrated On Off Switch
- All versions supplied complete with 10A fuse cable

Option 1. Part number USB-C-PANEL-K

- Dual USB port
- One USB C + One USB A
- Rated at 18W max. output
- 5V DC 3.1A split across both ports



Option 2. Part number USB-C-PANEL-WI

- Input DC 12V - 24V
- 15W Wireless Charging Pad
- USB A (QC3.0) 18W max 5V 3A / 9V 2A / 12V 1.5A
- USB C (PD3.0) 30W max 5V 3A / 9V 2A / 12V 2.5A
- Rated Max. Power 63 Watts
-



close



open



This specification is not for general release or circulation. Tiger Power reserves the right to make changes to spec. or product without notice or liability.

TIGER POWER PRODUCTS – QUALITY & RELIABILITY

USB Panel Mount Chargers

- Input voltage 12vdc - 24vdc
- 3 models to choose from
- Aluminium finish
- Integrated On Off Switch
- All versions supplied complete with 10A fuse cable

Option 1. Part number USB-C-PANEL-SKT-B2

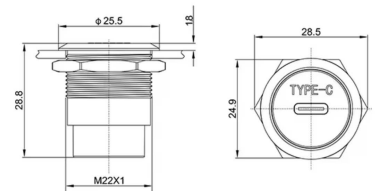


- Male to Female USB C socket
- Panel Mount
- Miniature size
- Type C USB 3.1
- Input voltage = output voltage
- This connector provide no voltage adjustment
- 3A max rating

Option 2. Part number USB-C-PANEL-SKT-C



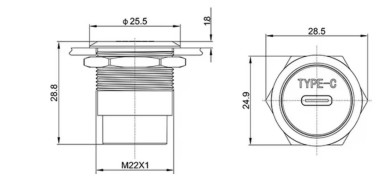
- Male to Female USB C socket
- Panel Mount
- Miniature size
- Type C USB 3.1
- Input voltage = output voltage
- This connector provide no voltage adjustment
- 3A max rating
- Black
- 22.5mm cut out



Option 3. Part number USB-C-PANEL-SKT-D



- Male to Female USB C socket
- Panel Mount
- Miniature size
- Type C USB 3.1
- Input voltage = output voltage
- This connector provide no voltage adjustment
- 3A max rating
- Silver
- 22.5mm cut out



TIGER POWER PRODUCTS – QUALITY & RELIABILITY

This specification is not for general release or circulation. Tiger Power reserves the right to make changes to spec. or product without notice or liability.

3A USB C PANEL CONNECTOR



TIGER PART: USB-C-PANEL-SKT-B

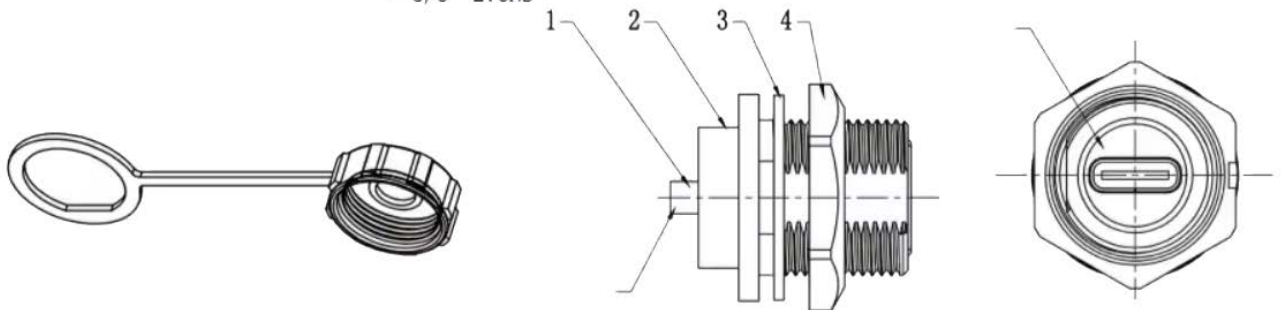
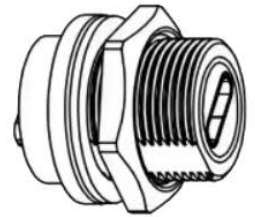
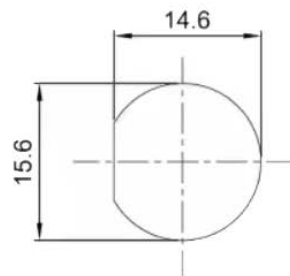
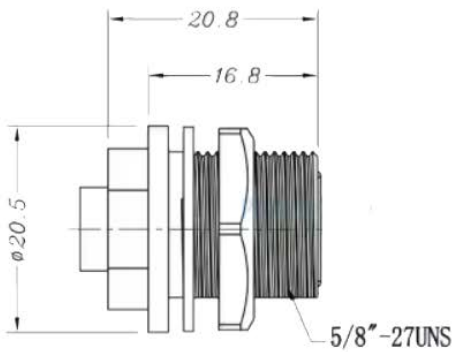
Features:

- Miniature size just 15.6mm cut out
- USB 3.1 Type C Panel Connector
- 3 Amp max. current rating @ 30V max.
- IP67 Waterproof rating
- suitable for indoor or outdoor use



TIGER POWER PRODUCTS – QUALITY & RELIABILITY

This specification is not for general release or circulation. Tiger Power reserves the right to make changes to spec. or product without notice or liability.



5A USB C PANEL CONNECTOR



TIGER PART: USB-C-PANEL-SKT-S

Features:

- Miniature size just 21.75mm
- 23mm cut out
- Silver Colour Aluminium Alloy Case
- USB 3.1 Type C Panel Connector
- 5 Amp max. current rating @ 30V max



TIGER POWER PRODUCTS – QUALITY & RELIABILITY

This specification is not for general release or circulation. Tiger Power reserves the right to make changes to spec. or product without notice or liability.

