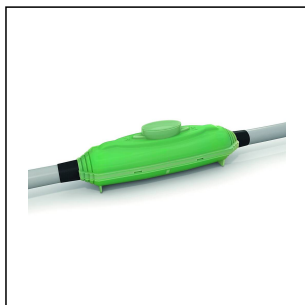


## WSJA6

### STRAIGHT Series



Products may differ in size, colour and appearance to those shown. If you require further information or customisation, please contact us directly.

<b>Filling</b>	Resin
<b>Voltage</b>	0,6 kV - 1 kV
<b>Ø cable diameter min</b>	45 mm
<b>Ø cable diameter max</b>	73 mm
<b>Terminals/poles</b>	120 - 300 mm <sup>2</sup>
<b>Quantity of cable</b>	4
<b>Type</b>	WSJA6
<b>UK-Number</b>	WSJA6
<b>WISKA-Order no.</b>	10106387
<b>Packing unit</b>	1

Remarks:

Cores: 4

Shelf life: 3 years

IP X8

Description:

SUBMARINE Straight Series allowing jointing of .6/1 kV single and multicore cables. Kit includes 2 transparent half-shells, 2 component resin, Direct Injection casting system allowing pre-mixed resin to be injected inside the joint, modular phase separator, earthing braid and constant force roll springs.

Additional Info:

Perfect for overhead, underground and underwater installations as well as public lightning systems. Excellent electrical insulation and mechanical strength. Available with final solid state (green) and re-enterable resin (yellow).

03.09.2025

Your Contact:

**WISKA UK Ltd.**

Unit 7, Hurling Way · St. Columb Major Business Park · TR9 6SX, St. Columb Major, Cornwall · Great Britain

☎ +44-12-08816062 · 📠 +44-12-08816708

info@wiska.co.uk · www.wiska.co.uk