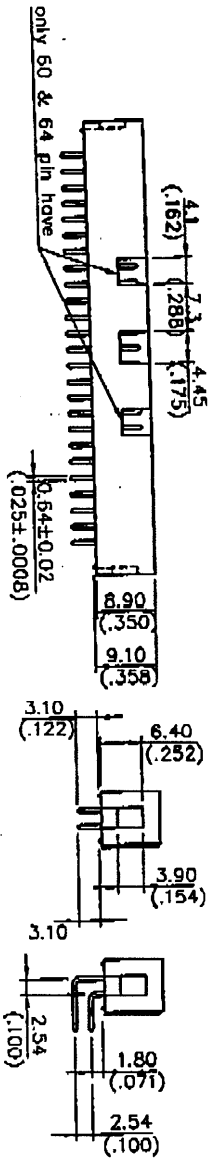
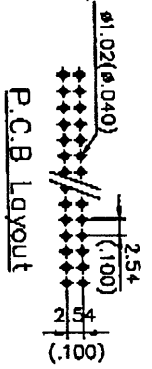
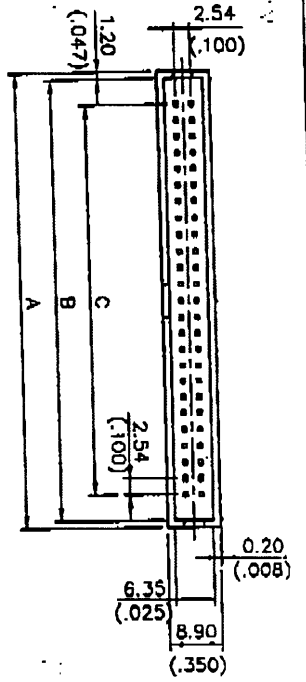


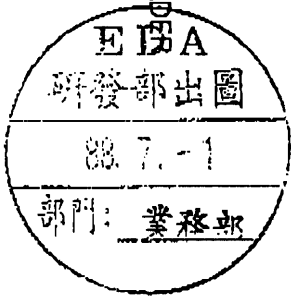
316-6820



ORDERING INFORMATION

9A 1 (2) 1 (3) - 34 (4) 3 (5) 4 (6)

1. SERIES : 2.54(.100") SPACING LOW PROFILE BOX HEADER  
 9A : 2.54(.100")
2. TYPE OF CONTACT :  
 1 : STRAIGHT TYPE  
 2 : RIGHT ANGLE TYPE
3. CONTACT TAIL TYPES :  
 1 : 2.60 (RIGHT ANGLE TYPE)  
 2 : 3.30 (STRAIGHT TYPE)
4. NUMBER OF CONTACTS :  
 34 : 34 POSITIONS  
 (10/12/14/16/20/24/26/30/34/40/44/50/56/60/64)
5. COLOR CODES :  
 2 : GRAY  
 3 : BLACK
6. CONTACT FINISH :  
 4 : GOLD FLASH OVER 30μ" NICKEL  
 5 : 15μ" GOLD OVER 50μ" NICKEL  
 6 : 30μ" GOLD OVER 50μ" NICKEL



**SPECIFICATIONS**  
 Contact Resistance : 20mΩ Max. at DC 1A  
 Insulation Resistance : 1000MΩ Min. at DC 500V  
 Current Rating : 2A  
 Voltage : AC 500V for 1 Minute  
 Operating Temperature : -55C TO +105C  
 Contact : Brass  
 Housing : PBT & 30% Glass : Fiber(UL 94V-0)

REV.	ZONE	LTR	DESCRIPTION	DATE	REVISION	APPD
78.74	86.60	89.00	64	9A**64**		
73.70	81.60	84.15	60	9A**60**		
68.58	76.52	78.72	56	9A**56**		
60.86	68.70	71.10	50	9A**50**		
53.34	61.28	63.48	44	9A**44**		
48.26	56.00	58.40	40	9A**40**		
40.64	48.40	50.78	34	9A**34**		
35.56	43.25	45.80	30	9A**30**		
30.50	38.20	40.65	26	9A**26**		
27.94	35.65	38.25	24	9A**24**		
22.86	30.60	33.00	20	9A**20**		
17.78	25.45	27.92	16	9A**16**		
15.24	22.86	25.38	14	9A**14**		
12.70	20.64	22.84	12	9A**12**		
10.16	17.90	20.30	10	9A**10**		
C	B	A	NO. OF POSITIONS	PART NO.		

MATERIAL		TOLERANCE UNSPECIFIED		PART NO.	
FINISH		0.00 ± 0.15		FADA INC.	
DRAWN		0.0 ± 0.30		SCALE	
CHECKED		DATE: 11/23-98		UNIT	
APPROVED		NAME		mm(Inch)	
		9A SERIES		SHEET	
		HEADER CONNECTOR		1	
		(1463)		/ 1	
		DRAWING NO. R-S109A-0		REV. 6	
		A3 RSI09A01			